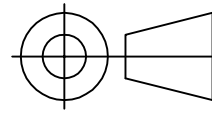
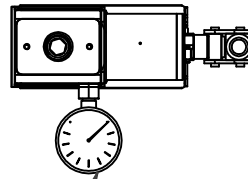


IF IN DOUBT, ASK

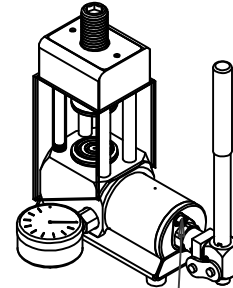
THIRD ANGLE PROJECTION



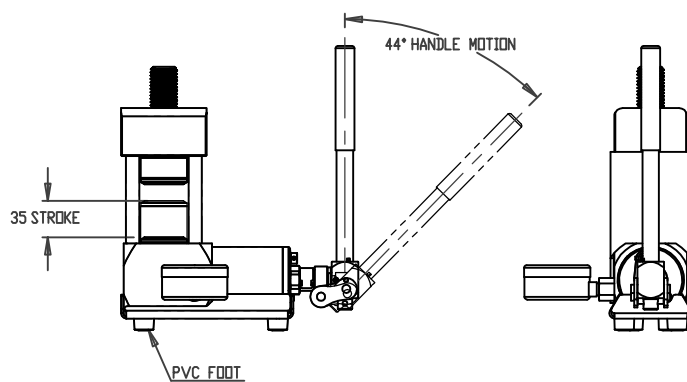
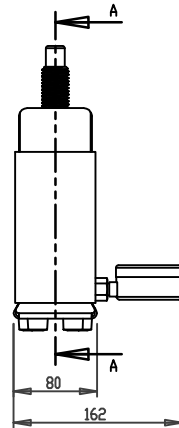
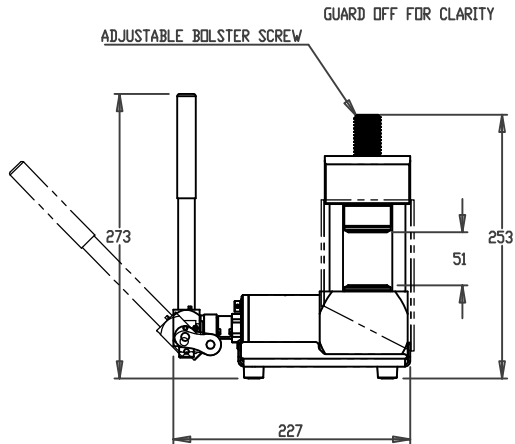
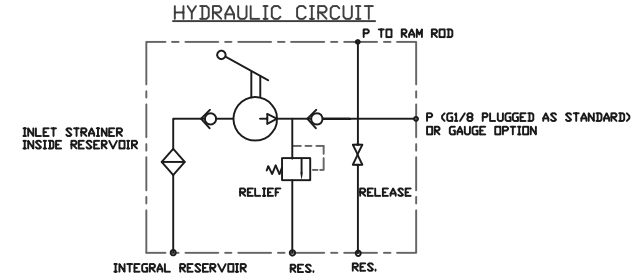
TOLERANCES UNLESS OTHERWISE STATED  
 GENERAL TOLERANCES RIGHT ANGLE BENDS &  
 NO DEC. PLACE +/-1.0mm OTHER ANGLES +/-1°  
 ONE DEC. PLACE +/-0.3mm MACHINED DIAMETERS  
 TWO DEC. PLACE +/-0.1mm CONCENTRIC WITHIN  
 +/-0.1mm T.I.R.  
 SCREW THREADS ARE ISO METRIC COARSE PITCH  
 TOL. 6g/6H (MED. FIT) TO BS3643  
 WIRE DIA./PLATE THICKNESS TO COMMERCIAL LIMITS  
 GEOMETRICAL TOLERANCING TO BS308 PART 3



63mm PRESSURE GAUGE  
 CAN BE BLANKED OFF  
 GAUGE IS GRADUATED IN TONNES/kN



HOLD/RELEASE VALVE  
 OPERATE WITH HANDLE



- NOTES
1. INTEGRAL PUMP/RESERVOIR MODULE
  2. STANDARD MICROPAC 10T RUNNING GEAR
  3. WORKING PRESSURE 700 BAR
  4. FLUID- MINERAL OIL
  5. DISPLACEMENT 0.5 cm<sup>3</sup>/DOUBLE STROKE (UP & DOWN)  
SINGLE ACTING- PRESSURE ON DOWN STROKE ONLY
  6. DIMENSIONS IN mm
  7. MATERIALS OF CONSTRUCTION:  
STEEL BS970  
302, 303, 316, 420, 431 STAINLESS STEEL  
PISTON ROD HARD CHROME PLATED STAINLESS STEEL
  8. FINISH: BRIGHT ZINC PLATE / COLOUR PASSIVATE, PHOSPHATE  
NITROTEC NQ3
  9. SEAL MATERIAL- NITRILE/PTFE.  
CONSULT FACTORY FOR ALTERNATIVE COMPOUNDS.
  10. TEMP RANGE -30DEG C TO 120 DEG C
  11. MASS 6.7 KG EST WET INCLUDING HANDLE
  12. HANDLE LOADS AT 700BAR = 308N

UNLESS OTHERWISE STATED:  
 DIMENSIONS IN MILLIMETRES  
 SURFACE FINISH IN MICROMETRES  
 REMOVE SHARP EDGES

© COPYRIGHT 2024 SARUM HYDRAULICS LTD.



SARUM HYDRAULICS LTD.

SALISBURY, SP4 6EB, UK  
 www.sarum-hydraulics.co.uk

DRAWN	NATO	APP
		CHKD
SCALE	F SIZE	SHEET OF
CAD 2-D	520000100	

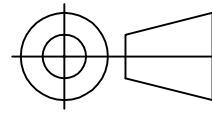
TITLE  
 INSTALLATION DG: 10 TON LABORATORY PRESS, ADJUSTER

DRAWING NO.  
 520000100

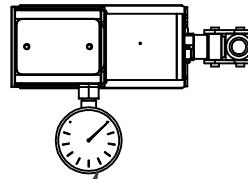
4	FIRST ISS AFTER DEV REVISIONS	04/24	MATERIAL PER NOTES
ISSUE	D.C.N.	CHANGE DESCRIPTION & DATE	DATE IMPLEMENTED
			FINISH --

IF IN DOUBT, ASK

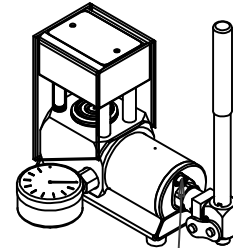
THIRD ANGLE PROJECTION



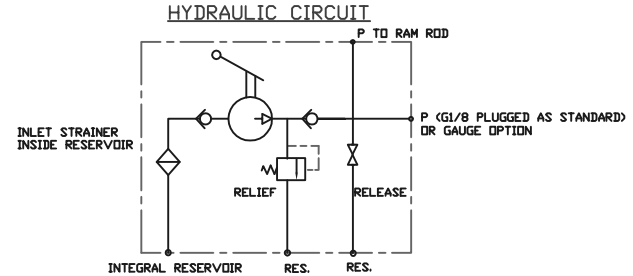
TOLERANCES UNLESS OTHERWISE STATED  
 GENERAL TOLERANCES ±0.1mm RIGHT ANGLE BENDS &  
 NO DEC. PLACE ±1.0mm OTHER ANGLES ±1°  
 ONE DEC. PLACE ±0.3mm MACHINED DIAMETERS  
 TWO DEC. PLACE ±0.1mm CONCENTRIC WITHIN  
 ±0.1mm T.I.R.  
 SCREW THREADS ARE ISO METRIC COARSE PITCH  
 TOL. 6g/6H (MED. FIT) TO BS3643  
 WIRE DIA./PLATE THICKNESS TO COMMERCIAL LIMITS  
 GEOMETRICAL TOLERANCING TO BS308 PART 3



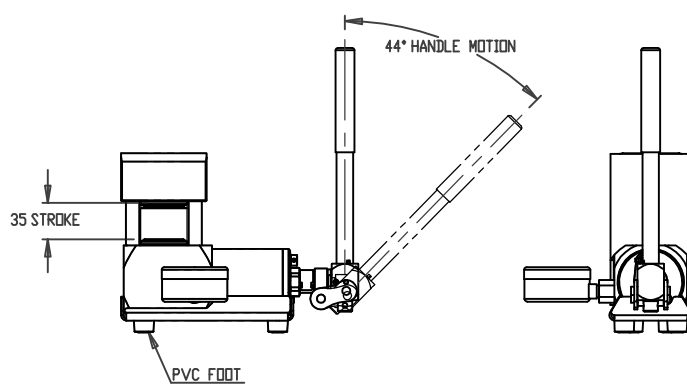
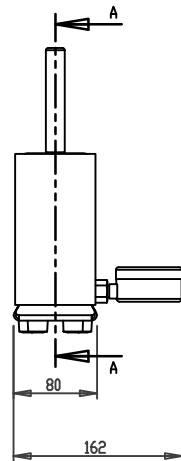
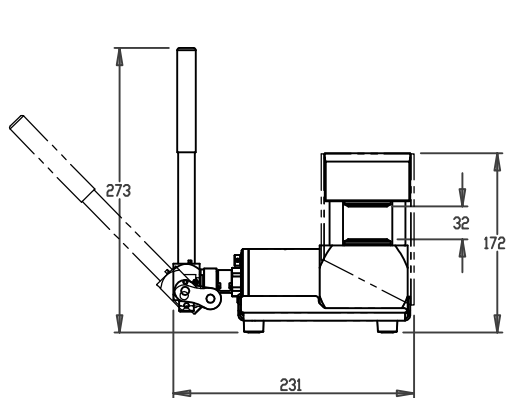
63mm PRESSURE GAUGE  
 CAN BE BLANKED OFF  
 GAUGE IS GRADUATED IN TONNES/kN



HOLD/RELEASE VALVE  
 OPERATE WITH HANDLE



GUARD OFF FOR CLARITY



NOTES

1. INTEGRAL PUMP/RESERVOIR MODULE  
STANDARD MICROPAC 10T RUNNING GEAR
2. WORKING PRESSURE 700 BAR
3. FLUID- MINERAL OIL
4. DISPLACEMENT 0.5 cm<sup>3</sup>/DOUBLE STROKE (UP & DOWN)  
SINGLE ACTING- PRESSURE ON DOWN STROKE ONLY
5. DIMENSIONS IN mm
6. MATERIALS OF CONSTRUCTION:  
STEEL BS970  
302, 303, 316, 420, 431 STAINLESS STEEL  
PISTON ROD HARD CHROME PLATED STAINLESS STEEL
7. FINISH: BRIGHT ZINC PLATE / COLOUR PASSIVATE, PHOSPHATE  
NITROTEC NQ3
8. SEAL MATERIAL- NITRILE/PTFE.  
CONSULT FACTORY FOR ALTERNATIVE COMPOUNDS.
9. TEMP RANGE -30DEG C TO 120 DEG C
10. MASS 6.1 KG EST WET INCLUDING HANDLE
11. HANDLE LOADS AT 700BAR = 308N

UNLESS OTHERWISE STATED:  
 DIMENSIONS IN MILLIMETRES  
 SURFACE FINISH IN MICROMETRES  
 REMOVE SHARP EDGES

© COPYRIGHT 2024 SARUM HYDRAULICS LTD.



SARUM HYDRAULICS LTD.

SALISBURY, SP4 6EB, UK  
 www.sarum-hydraulics.co.uk

TITLE  
 INSTALLATION DG: 10 TON LABORATORY PRESS, NO ADJUSTER

DRAWN	NATO	APP
		CHKD
SCALE	F	SIZE SHEET OF
CAD	2-D	520000200

DRAWING NO.  
**520000200**

1	FIRST ISSUE	04/24
ISSUE	D.C.N.	CHANGE DESCRIPTION & DATE
		DATE IMPLEMENTED

MATERIAL PER NOTES  
 FINISH --