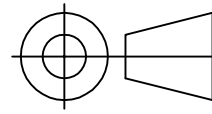
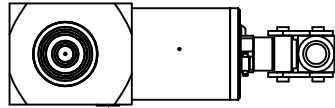


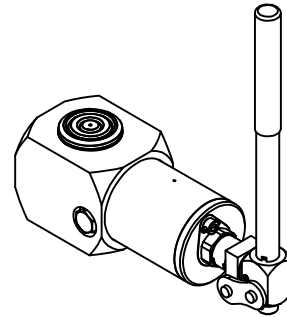
IF IN DOUBT, ASK THIRD ANGLE PROJECTION



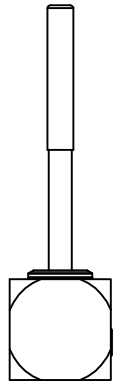
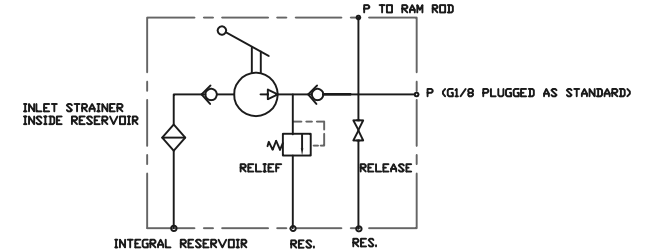
TOLERANCES UNLESS OTHERWISE STATED
 GENERAL TOLERANCES RIGHT ANGLE BENDS &
 NO DEC. PLACE +/-1.0mm OTHER ANGLES +/-1°
 ONE DEC. PLACE +/-0.3mm MACHINED DIAMETERS
 TWO DEC. PLACE +/-0.1mm CONCENTRIC WITHIN
 +/-0.1mm T.I.R.
 SCREW THREADS ARE ISO METRIC COARSE PITCH
 TOL. 6g/6H (MED. FIT) TO BS3643
 WIRE DIA./PLATE THICKNESS TO COMMERCIAL LIMITS
 GEOMETRICAL TOLERANCING TO BS308 PART 3



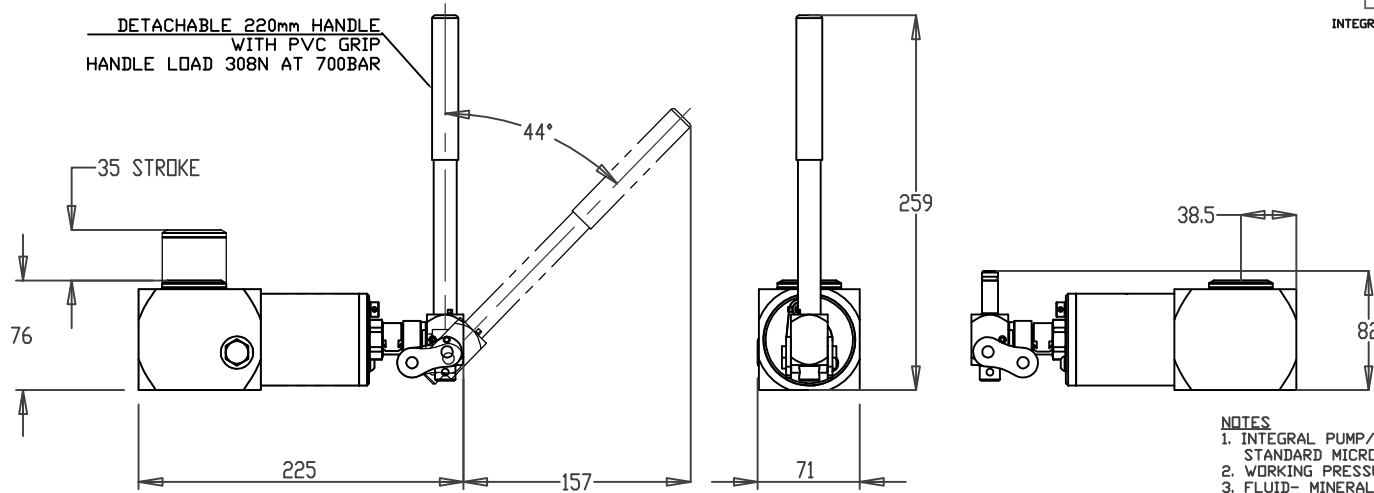
PLUGGED AS STANDARD - OPTIONAL
 PRESSURE GAUGE FITTED HERE
 CALIBRATED IN TONNES



HYDRAULIC CIRCUIT



DETACHABLE 220mm HANDLE
 WITH PVC GRIP
 HANDLE LOAD 308N AT 700BAR



NOTES

1. INTEGRAL PUMP/RESERVOIR MODULE
STANDARD MICROPAC 10T RUNNING GEAR
2. WORKING PRESSURE 700 BAR / 630 BAR IF MINIMESS CONNECTION
3. FLUID- MINERAL OIL
4. DISPLACEMENT 0.5 cm³/DOUBLE STROKE (UP & DOWN)
SINGLE ACTING- PRESSURE ON DOWN STROKE ONLY
5. DIMENSIONS IN mm
6. MATERIALS OF CONSTRUCTION:
STEEL BS970
302, 303, 316, 420, 431 STAINLESS STEEL
PISTON ROD HARD CHROME PLATED STAINLESS STEEL
7. FINISH: BRIGHT ZINC PLATE / COLOUR PASSIVATE, PHOSPHATE
NITROTEC NQ3
8. SEAL MATERIAL- NITRILE/PTFE.
CONSULT FACTORY FOR ALTERNATIVE COMPOUNDS.
9. TEMP RANGE -30DEG C TO 120 DEG C
10. MASS 4.5 KG EST WET INCLUDING HANDLE
11. HANDLE LOADS AT 700BAR = 308N

UNLESS OTHERWISE STATED:
 DIMENSIONS IN MILLIMETRES
 SURFACE FINISH IN MICROMETRES
 REMOVE SHARP EDGES

© COPYRIGHT 2023 SARUM HYDRAULICS LTD.



SARUM HYDRAULICS LTD.

SALISBURY, SP4 6EB, UK
 www.sarum-hydraulics.co.uk

DRAWN: NATO APP

CHKD

SCALE: F SIZE SHEET OF

CAD 2-D 524000100

DRAWING NO.

524000100

ISSUE	D.C.N.	CHANGE DESCRIPTION & DATE	DATE IMPLEMENTED
2	2402191	STROKE WAS LISTED AS 44.5MM	N.D 02/24
1		FIRST ISSUE	12/23

TITLE
INSTALLATION DG: 10 TON INTEGRAL JACK
 MATERIAL PER NOTES
 FINISH --