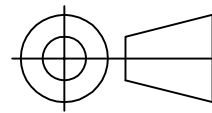
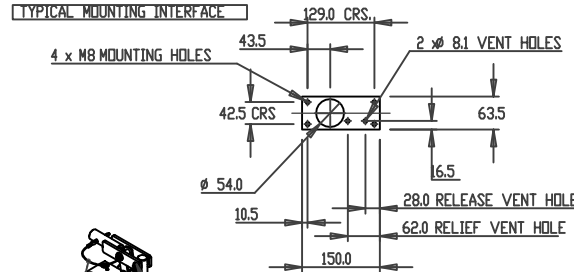
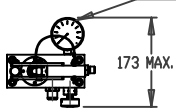


# IF IN DOUBT, ASK THIRD ANGLE PROJECTION



TOLERANCES UNLESS OTHERWISE STATED  
 GENERAL TOLERANCES RIGHT ANGLE BENDS &  
 NO DEC. PLACE +/-1.0mm OTHER ANGLES +/-1°  
 ONE DEC. PLACE +/-0.3mm MACHINED DIAMETERS  
 TWO DEC. PLACE +/-0.1mm CONCENTRIC WITHIN  
 +/-0.1mm T.I.R.  
 SCREW THREADS ARE ISO METRIC COARSE PITCH  
 TOL. 6g/6h (MED. FIT) TO BS3643  
 WIRE DIA./PLATE THICKNESS TO COMMERCIAL LIMITS  
 GEOMETRICAL TOLERANCING TO BS308 PART 3

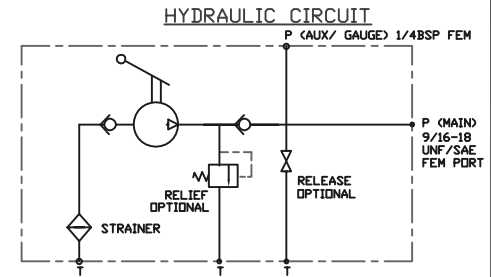
63MM PRESSURE GAUGE OPTION SHOWN  
 316 SS WETTED PARTS, 303 SS CASE, SAFETY GLASS WINDOW  
 ON ATEX MODELS.  
 \*ALL-316\* STAINLESS GAUGES AVAILABLE UPON REQUEST  
 THIS PORT CAN ALSO BE BLANKED OFF FOR MODELS  
 WITH NO PRESSURE GAUGE FITTED  
 PORT IS 1/4BSP FEMALE



316 STAINLESS / CHROMED PIVOT PINS FITTED  
 316 STAINLESS WASHERS AND SPACERS FITTED  
 ON ATEX MODELS

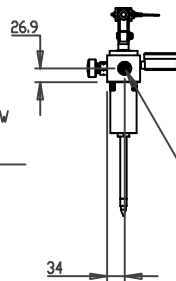
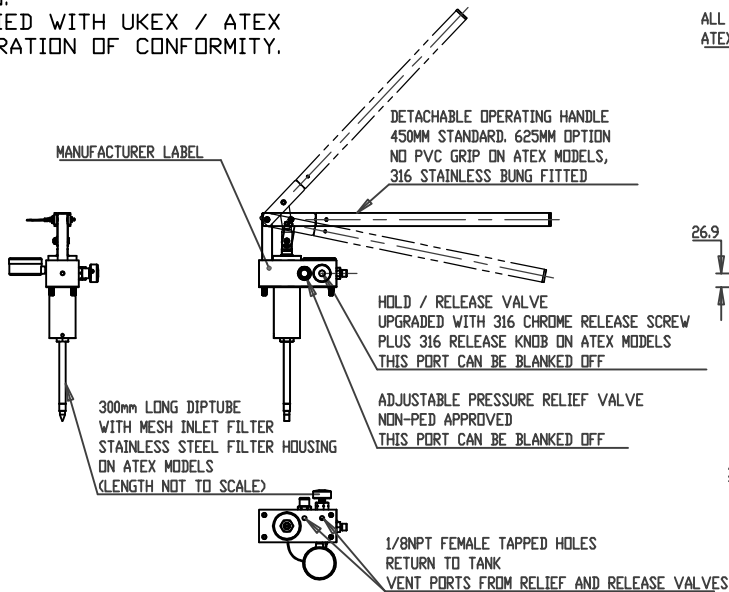
ALL STAINLESS LANYARD ON  
 ATEX MODELS

SPECIAL REQUIREMENTS: 007046000 AX  
 UPGRADE KIT FITTED MAKING PUMP  
 SUITABLE FOR USE IN POTENTIALLY  
 EXPLOSIVE ATMOSPHERES.  
 SEE DATASHEET FOR FULL ATEX / IECEX  
 CODING.  
 SUPPLIED WITH UKEX / ATEX  
 DECLARATION OF CONFORMITY.

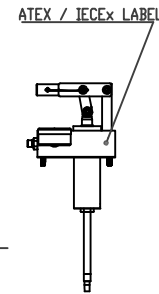


### NOTES:

- THIS DRAWING SHOWS THE ATEX/IECEX UPGRADE KIT FITTED TO OUR MW-3 HANDPUMP. ADD -AX TO END OF ORDERING CODE. THIS UPGRADE PROVIDES ALL 316 STAINLESS/BRONZE CW307G EXTERNAL MATERIALS APART FROM THE 304 CASE OF GAUGE (SEE NOTE)
- MATERIALS OF CONSTRUCTION:  
 316 STAINLESS STEEL 1.4404  
 ALUMINIUM BRONZE CW307G  
 SMALL AMOUNTS OF 302,303,304,316,416,420,431 STAINLESS STEEL WETTED PARTS
- INLET STRAINER FITTED ON DIPTUBE AS SHOWN
- POPPET TYPE OUTLET CHECK VALVE WITH REPLACEABLE SEAT
- CLEVIS FITTED, ARC OF MOVEMENT PER NOTE
- OPTIONAL ADJUSTABLE RELIEF VALVE PER NOTE
- OPTIONAL HOLD / RELEASE VALVE PER NOTE
- SEAL MATERIAL: NITRILE, PTFE, FILLED PTFE, UHMW/P STANDARD.  
 OPTIONS INCLUDE VITON FLUOROCARBON AND EPDM
- TEMPERATURE RANGE -30 TO +80 DEG C
- SEE NON-ATEX DRAWINGS FOR EACH BASE MODEL DIMENSIONS
- STANDARD UNIT SUPPLIED WITH INLET FILTER/ DIPTUBE, MOUNTING GASKET AND 4 x M8 MOUNTING SCREWS
- SYSTEM DESIGN, INSTALLATION, USE AND MAINTENANCE IN ACCORDANCE WITH STATUTORY AND OTHER REQUIREMENTS
- SEE INSTALLATION DRAWING PACK FOR RESERVOIR OPTIONS
- UNDER THE TERMS OF OUR ATEX/IECEX/UKEX CERTIFICATION, THE PRODUCT CANNOT BE CHANGED.

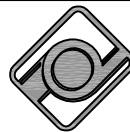


FEMALE THREAD IS 9/16-18 UNF/SAE WITH  
 1/4BSP MALE CONED ADAPTOR FITTED AS STANDARD.  
 MANY ADAPTOR OPTIONS ARE AVAILABLE  
 CONSULT FACTORY.



UNLESS OTHERWISE STATED:  
 DIMENSIONS IN MILLIMETRES  
 SURFACE FINISH IN MICROMETRES  
 REMOVE SHARP EDGES

© COPYRIGHT 2024 SARUM HYDRAULICS LTD.



SARUM HYDRAULICS LTD.

SALISBURY, SP4 6EB, UK  
 www.sarum-hydraulics.co.uk

TITLE

INST DG: MICROPAC MW-3 ATEX UPGRADE

MATERIAL PER NOTES

FINISH PER NOTES

|             |            |               |
|-------------|------------|---------------|
| DRAWN       | NATO       | APP           |
|             |            | CHKD          |
| SCALE       | F          | SIZE SHEET OF |
| CAD         | 2-D        | MW-3-XX-AX    |
| DRAWING NO. | MW-3-XX-AX |               |

|       |             |                           |
|-------|-------------|---------------------------|
| 1     | FIRST ISSUE | 01/24                     |
| ISSUE | D.C.N.      | CHANGE DESCRIPTION & DATE |
|       |             | DATE IMPLEMENTED          |