

MW-3 Single Speed Hand Pump Index for drawings

What do we offer?

Our Micropac® MW-3 is a component hand pump which can be configured to suit your exact requirement. Double acting operation up to 700 bar, multi-fluid compatible with easy change seal kits.

These pumps can be fitted to a range of fixed mount reservoirs 1-50 litre capacity. See pages 7-13.

For portable units, see our MP- range for Pumps fitted to portable, carry-around or wheel-around reservoirs.

ATEX / IECEx certified options. See page 14.

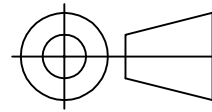
For extra options, such as 4-way directional control valves, see page 15 & 16.

For aluminium pumps, see our MW-A range.

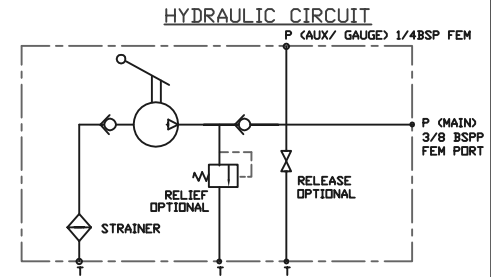
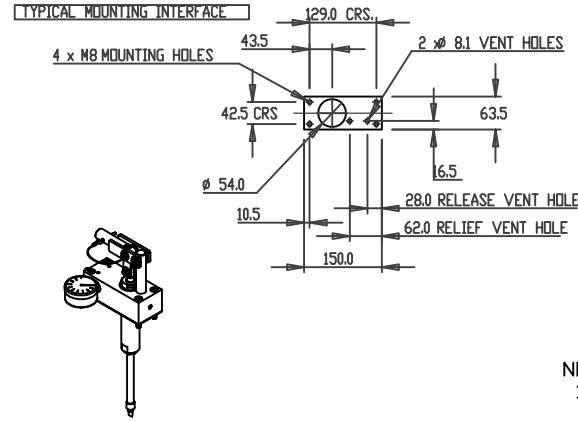
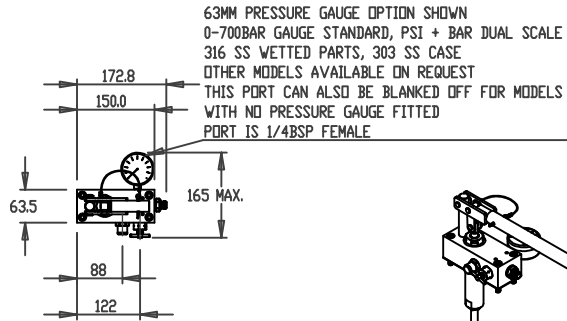


Page	Drawing Number	Description
2	MW-3-07	Available Pump Models: 7cc / Double stroke up to 700 Bar max. pressure
3	MW-3-12	12cc / Double stroke up to 407 Bar max. pressure
4	MW-3-25	25cc / Double stroke up to 204 Bar max. pressure
5	MW-3-49	49cc / Double stroke up to 102 Bar max. pressure
6	MW-3-10	100cc / Double stroke up to 50 Bar max. pressure
<p>Available range of Fixed Reservoirs: Codes are for Reservoir alone, But order as part of the pump assembly per the ordering codes on the MW-3 Datasheet. See these drawings for the mounting centres, and for an illustration of a pump mounted on each reservoir.</p>		
7	MR-F-3-01	1 Litre Fixed Reservoir
8	MR-F-3-02	2.5 Litre Fixed Reservoir
9	MR-F-3-05	5 Litre Fixed Reservoir
10	MR-F-3-10	10 Litre Fixed Reservoir
11	MR-F-3-20	20 Litre Fixed Reservoir
12	MR-F-3-50	50 Litre Fixed Reservoir
13	MR-F-3-4E	4 Litre Fixed Reservoir - "Ergo"
14	MW-3-XX-AX	ATEX / IECEx certified units: Just add "-AX" to the end of the ordering code to receive all the necessary upgrades to make the pump suitable for uses in Potentially Explosive atmospheres
15	007062701	Other options: 4-way directional control valve, up to 400 bar operation - 316 stainless
16	007069700	4-way directional control valve, up to 700 bar operation - 316 stainless shown fitted to MW-3-07, 700bar pump.

IF IN DOUBT, ASK THIRD ANGLE PROJECTION

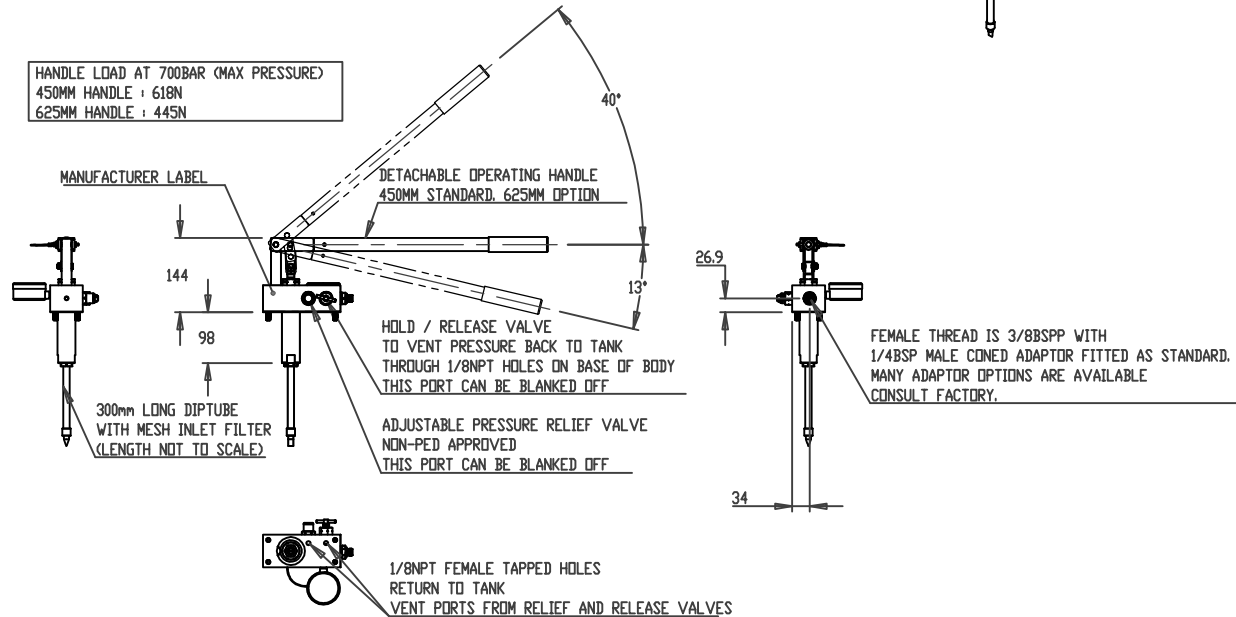


TOLERANCES UNLESS OTHERWISE STATED
 GENERAL TOLERANCES RIGHT ANGLE BENDS &
 NO DEC. PLACE +/-1.0mm OTHER ANGLES +/-1°
 ONE DEC. PLACE +/-0.3mm MACHINED DIAMETERS
 TWO DEC. PLACE +/-0.1mm CONCENTRIC WITHIN
 +/-0.1mm T.I.R.
 SCREW THREADS ARE ISO METRIC COARSE PITCH
 TOL. 6g/6h (MED. FIT) TO BS3643
 WIRE DIA./PLATE THICKNESS TO COMMERCIAL LIMITS
 GEOMETRICAL TOLERANCING TO BS308 PART 3



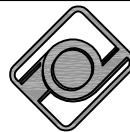
- NOTES:
- THIS DRAWING SHOWS OUR MICROPAC SINGLE SPEED HANDPUMP, MW-3-07
 - DISPLACEMENT IS 7CC OF FLUID PER DOUBLE STROKE (UP & DOWN ON THE HANDLE)
 - MATERIALS OF CONSTRUCTION:
 316 STAINLESS STEEL 1.4404
 ALUMINIUM BRONZE CW307G
 SMALL AMOUNTS OF 302,303,304,316,416,420,431
 STAINLESS STEEL
 NYLON, ACETAL, PVC
 - INLET STRAINER FITTED ON DIPTUBE AS SHOWN
 - POPPET TYPE OUTLET CHECK VALVE WITH REPLACEABLE SEAT
 - CLEVIS FITTED, ARC OF MOVEMENT PER NOTE
 - OPTIONAL ADJUSTABLE RELIEF VALVE PER NOTE
 - OPTIONAL HOLD / RELEASE VALVE PER NOTE
 - SEAL MATERIAL: NITRILE, PTFE, FILLED PTFE, UHMW/P STANDARD.
 OPTIONS INCLUDE VITON FLUOROCARBON AND EPDM
 - TEMPERATURE RANGE -30 TO +80 DEG C
 - MASS 6.1KG APPROX. EXCL DETACHABLE HANDLE.
 450MM HANDLE 0.5KG EXTRA
 625MM HANDLE 0.7KG EXTRA
 - STANDARD UNIT SUPPLIED WITH INLET FILTER/ DIPTUBE, MOUNTING GASKET AND 4 x M8 MOUNTING SCREWS
 - SYSTEM DESIGN, INSTALLATION, USE AND MAINTENANCE IN ACCORDANCE WITH STATUTORY AND OTHER REQUIREMENTS
 - SEE INSTALLATION DRAWING PACK FOR RESERVOIR OPTIONS
 - SPECIFICATION MAY BE SUBJECT TO REVISION

HANDLE LOAD AT 700BAR (MAX PRESSURE)
 450MM HANDLE : 618N
 625MM HANDLE : 445N



UNLESS OTHERWISE STATED:
 DIMENSIONS IN MILLIMETRES
 SURFACE FINISH IN MICROMETRES
 REMOVE SHARP EDGES

© COPYRIGHT 2024 SARUM HYDRAULICS LTD.



SARUM HYDRAULICS LTD.

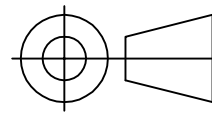
SALISBURY, SP4 6EB, UK
 www.sarum-hydraulics.co.uk

DRAWN	NATO	APP
		CHKD
SCALE	F	SIZE SHEET OF
CAD	2-D	MW-3-07
DRAWING NO.	MW-3-07	

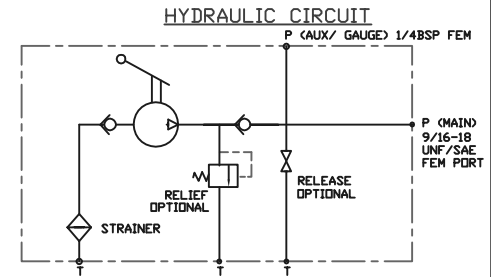
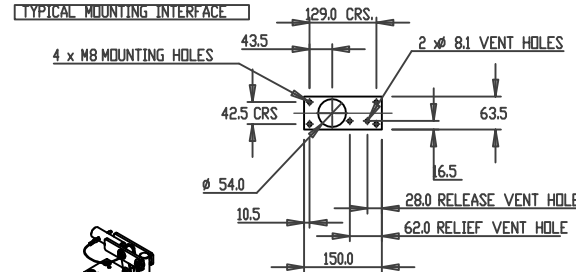
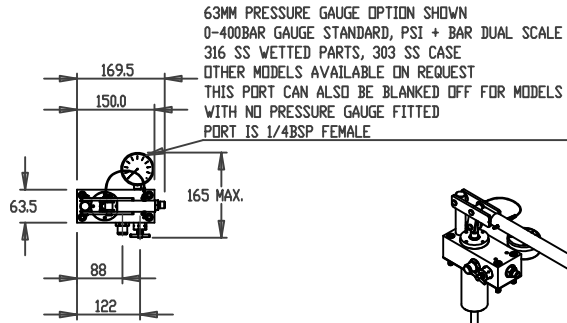
ISSUE	D.C.N.	CHANGE DESCRIPTION & DATE	DATE IMPLEMENTED
5	2401031	UPDATED LINES TO LATEST	N.D 01/24
4	2106301	ADD RESERVOIRS IN NOTE	06/21
3	1709172	BARREL WAS Ø50.8	09/17
2	0806091	WAS 3/8NPT PORT	06/08
1		FIRST ISSUE	10/98

TITLE
INST DG: MICROPAC MW-3 SINGLE SPEED HANDPUMP, 7CC
 MATERIAL PER NOTES
 FINISH PER NOTES

IF IN DOUBT, ASK THIRD ANGLE PROJECTION

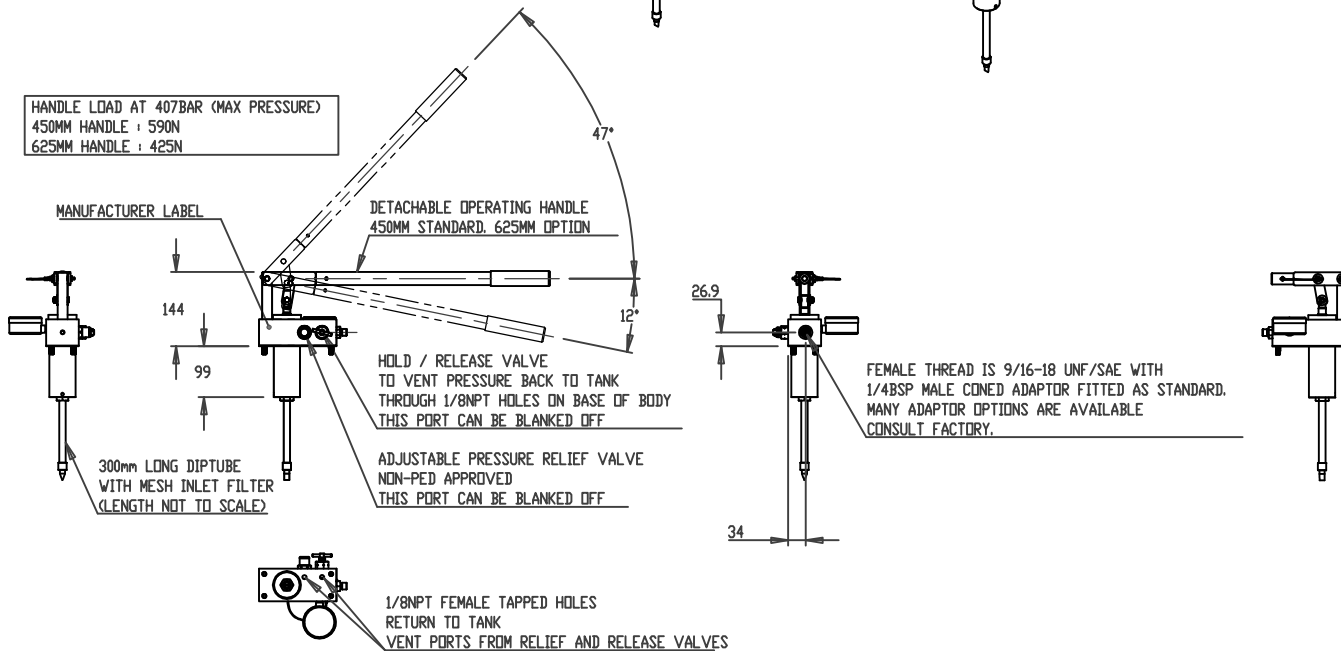


TOLERANCES UNLESS OTHERWISE STATED
 GENERAL TOLERANCES RIGHT ANGLE BENDS &
 NO DEC. PLACE +/-1.0mm OTHER ANGLES +/-1°
 ONE DEC. PLACE +/-0.3mm MACHINED DIAMETERS
 TWO DEC. PLACE +/-0.1mm CONCENTRIC WITHIN
 +/-0.1mm T.I.R.
 SCREW THREADS ARE ISO METRIC COARSE PITCH
 TOL. 6g/6h (MED. FIT) TO BS3643
 WIRE DIA./PLATE THICKNESS TO COMMERCIAL LIMITS
 GEOMETRICAL TOLERANCING TO BS308 PART 3



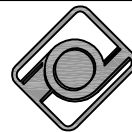
- NOTES:
- THIS DRAWING SHOWS OUR MICROPAC SINGLE SPEED HANDPUMP, MW-3-12
 - DISPLACEMENT IS 12CC OF FLUID PER DOUBLE STROKE (UP & DOWN ON THE HANDLE)
 - MATERIALS OF CONSTRUCTION:
 316 STAINLESS STEEL 1.4404
 ALUMINIUM BRONZE CW307G
 SMALL AMOUNTS OF 302,303,304,316,416,420,431 STAINLESS STEEL
 NYLON, ACETAL, PVC
 - INLET STRAINER FITTED ON DIPTUBE AS SHOWN
 - POPPET TYPE OUTLET CHECK VALVE WITH REPLACEABLE SEAT
 - CLEVIS FITTED, ARC OF MOVEMENT PER NOTE
 - OPTIONAL ADJUSTABLE RELIEF VALVE PER NOTE
 - OPTIONAL HOLD / RELEASE VALVE PER NOTE
 - SEAL MATERIAL: NITRILE, PTFE, FILLED PTFE, UHMW/P STANDARD.
 OPTIONS INCLUDE VITON FLUOROCARBON AND EPDM
 - TEMPERATURE RANGE -30 TO +80 DEG C
 - MASS 7.0KG APPROX. EXCL DETACHABLE HANDLE.
 450MM HANDLE 0.5KG EXTRA
 625MM HANDLE 0.7KG EXTRA
 - STANDARD UNIT SUPPLIED WITH INLET FILTER/ DIPTUBE, MOUNTING GASKET AND 4 x M8 MOUNTING SCREWS
 - SYSTEM DESIGN, INSTALLATION, USE AND MAINTENANCE IN ACCORDANCE WITH STATUTORY AND OTHER REQUIREMENTS
 - SEE INSTALLATION DRAWING PACK FOR RESERVOIR OPTIONS
 - SPECIFICATION MAY BE SUBJECT TO REVISION

HANDLE LOAD AT 407BAR (MAX PRESSURE)
 450MM HANDLE : 590N
 625MM HANDLE : 425N



UNLESS OTHERWISE STATED:
 DIMENSIONS IN MILLIMETRES
 SURFACE FINISH IN MICROMETRES
 REMOVE SHARP EDGES

© COPYRIGHT 2024 SARUM HYDRAULICS LTD.



SARUM HYDRAULICS LTD.

SALISBURY, SP4 6EB, UK
 www.sarum-hydraulics.co.uk

TITLE
 INST DG: MICROPAC MW-3 SINGLE SPEED HANDPUMP, 12CC

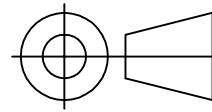
DRAWN	NATO	APP
		CHKD
SCALE	F SIZE	SHEET OF
CAD 2-D	MW-3-12	
DRAWING NO.		

MW-3-12

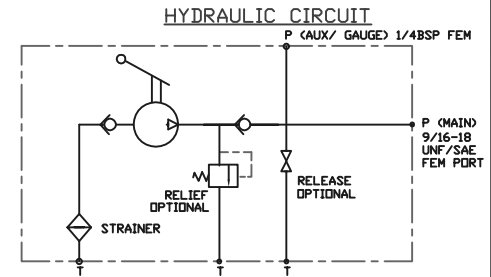
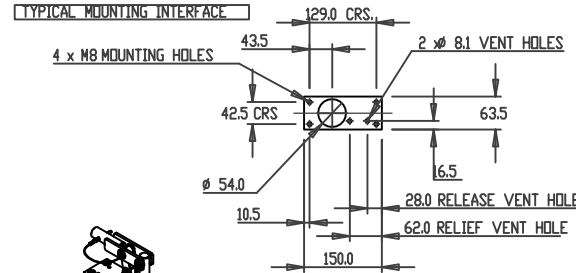
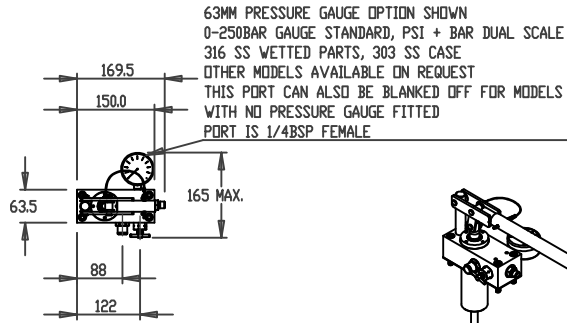
1	FIRST ISSUE	01/24
ISSUE	D.C.N.	CHANGE DESCRIPTION & DATE
		DATE IMPLEMENTED

MATERIAL PER NOTES
 FINISH PER NOTES

IF IN DOUBT, ASK THIRD ANGLE PROJECTION

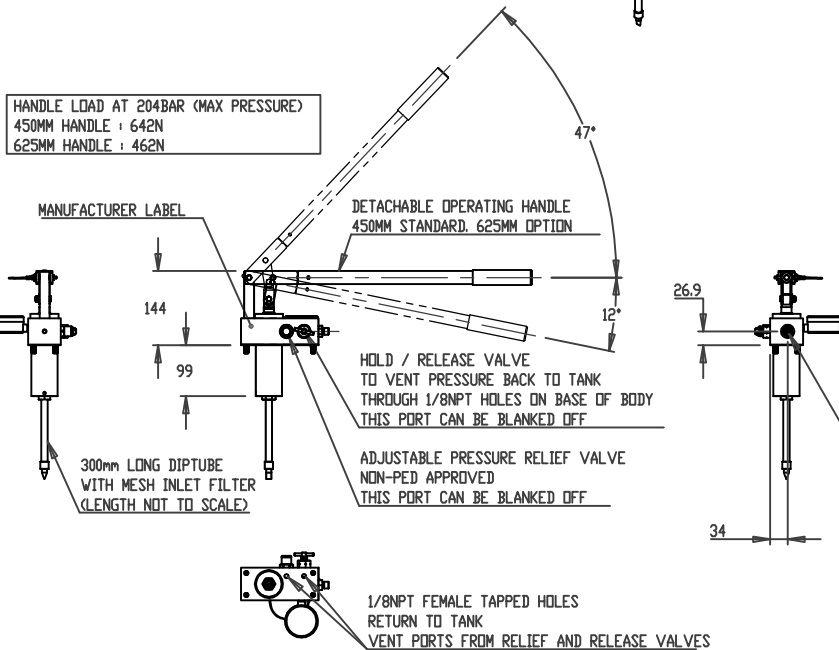


TOLERANCES UNLESS OTHERWISE STATED
 GENERAL TOLERANCES RIGHT ANGLE BENDS &
 NO DEC. PLACE +/-1.0mm OTHER ANGLES +/-1°
 ONE DEC. PLACE +/-0.3mm MACHINED DIAMETERS
 TWO DEC. PLACE +/-0.1mm CONCENTRIC WITHIN
 +/-0.1mm T.I.R.
 SCREW THREADS ARE ISO METRIC COARSE PITCH
 TOL. 6g/6h (MED. FIT) TO BS3643
 WIRE DIA./PLATE THICKNESS TO COMMERCIAL LIMITS
 GEOMETRICAL TOLERANCING TO BS308 PART 3



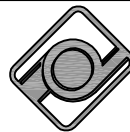
NOTES:

- THIS DRAWING SHOWS OUR MICROPAC SINGLE SPEED HANDPUMP, MW-3-25
- DISPLACEMENT IS 25CC OF FLUID PER DOUBLE STROKE (UP & DOWN ON THE HANDLE)
- MATERIALS OF CONSTRUCTION:
 316 STAINLESS STEEL 1.4404
 ALUMINIUM BRONZE CW307G
 SMALL AMOUNTS OF 302,303,304,316,416,420,431 STAINLESS STEEL
 NYLON, ACETAL, PVC
- INLET STRAINER FITTED ON DIPTUBE AS SHOWN
- POPPET TYPE OUTLET CHECK VALVE WITH REPLACEABLE SEAT
- CLEVIS FITTED, ARC OF MOVEMENT PER NOTE
- OPTIONAL ADJUSTABLE RELIEF VALVE PER NOTE
- OPTIONAL HOLD / RELEASE VALVE PER NOTE
- SEAL MATERIAL: NITRILE, PTFE, FILLED PTFE, UHMW/P STANDARD.
 OPTIONS INCLUDE VITON FLUOROCARBON AND EPDM
- TEMPERATURE RANGE -30 TO +80 DEG C
- MASS 6.9KG APPROX. EXCL DETACHABLE HANDLE.
 450MM HANDLE 0.5KG EXTRA
 625MM HANDLE 0.7KG EXTRA
- STANDARD UNIT SUPPLIED WITH INLET FILTER/ DIPTUBE, MOUNTING GASKET AND 4 x M8 MOUNTING SCREWS
- SYSTEM DESIGN, INSTALLATION, USE AND MAINTENANCE IN ACCORDANCE WITH STATUTORY AND OTHER REQUIREMENTS
- SEE INSTALLATION DRAWING PACK FOR RESERVOIR OPTIONS
- SPECIFICATION MAY BE SUBJECT TO REVISION



UNLESS OTHERWISE STATED:
 DIMENSIONS IN MILLIMETRES
 SURFACE FINISH IN MICROMETRES
 REMOVE SHARP EDGES

© COPYRIGHT 2024 SARUM HYDRAULICS LTD.



SARUM HYDRAULICS LTD.

SALISBURY, SP4 6EB, UK
 www.sarum-hydraulics.co.uk

TITLE

INST DG: MICROPAC MW-3 SINGLE SPEED HANDPUMP, 25CC

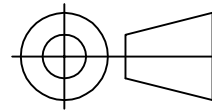
MATERIAL PER NOTES

FINISH PER NOTES

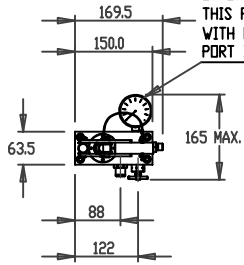
DRAWN	NATO	APP
		CHKD
SCALE	F SIZE	SHEET OF
CAD	2-D	MW-3-25
DRAWING NO.	MW-3-25	

1	FIRST ISSUE	01/24
ISSUE	D.C.N.	CHANGE DESCRIPTION & DATE
		DATE IMPLEMENTED

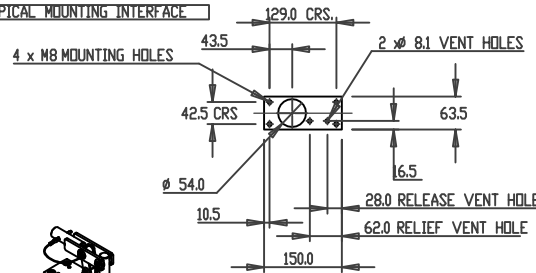
IF IN DOUBT, ASK THIRD ANGLE PROJECTION



63MM PRESSURE GAUGE OPTION SHOWN
 0-100BAR GAUGE STANDARD, PSI + BAR DUAL SCALE
 316 SS WETTED PARTS, 303 SS CASE
 OTHER MODELS AVAILABLE ON REQUEST
 THIS PORT CAN ALSO BE BLANKED OFF FOR MODELS
 WITH NO PRESSURE GAUGE FITTED
 PORT IS 1/4BSP FEMALE

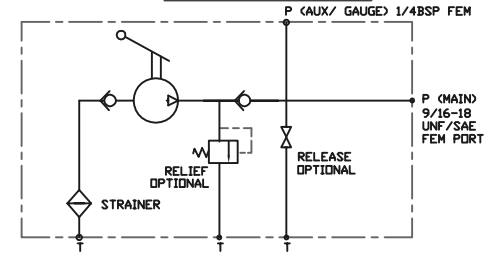


TYPICAL MOUNTING INTERFACE



TOLERANCES UNLESS OTHERWISE STATED
 GENERAL TOLERANCES RIGHT ANGLE BENDS &
 NO DEC. PLACE +/-1.0mm OTHER ANGLES +/-1°
 ONE DEC. PLACE +/-0.3mm MACHINED DIAMETERS
 TWO DEC. PLACE +/-0.1mm CONCENTRIC WITHIN
 +/-0.1mm T.I.R.
 SCREW THREADS ARE ISO METRIC COARSE PITCH
 TOL. 6g/6h (MED. FIT) TO BS3643
 WIRE DIA./PLATE THICKNESS TO COMMERCIAL LIMITS
 GEOMETRICAL TOLERANCING TO BS308 PART 3

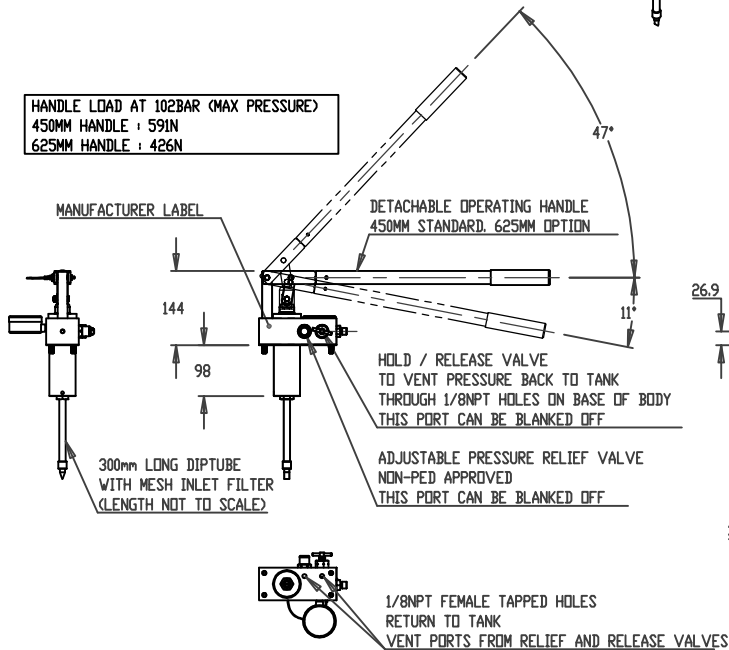
HYDRAULIC CIRCUIT



NOTES:

- THIS DRAWING SHOWS OUR MICROPAC SINGLE SPEED HANDPUMP, MW-3-49
- DISPLACEMENT IS 49CC OF FLUID PER DOUBLE STROKE (UP & DOWN ON THE HANDLE)
- MATERIALS OF CONSTRUCTION:
 316 STAINLESS STEEL 1.4404
 ALUMINIUM BRONZE CW307G
 SMALL AMOUNTS OF 302,303,304,316,416,420,431 STAINLESS STEEL
 NYLON, ACETAL, PVC
- INLET STRAINER FITTED ON DIPTUBE AS SHOWN
- POPPET TYPE OUTLET CHECK VALVE WITH REPLACEABLE SEAT
- CLEVIS FITTED, ARC OF MOVEMENT PER NOTE
- OPTIONAL ADJUSTABLE RELIEF VALVE PER NOTE
- OPTIONAL HOLD / RELEASE VALVE PER NOTE
- SEAL MATERIAL: NITRILE, PTFE, FILLED PTFE, UHMW/P STANDARD.
 OPTIONS INCLUDE VITON FLUOROCARBON AND EPDM
- TEMPERATURE RANGE -30 TO +80 DEG C
- MASS 6.8KG APPROX. EXCL DETACHABLE HANDLE.
 450MM HANDLE 0.5KG EXTRA
 625MM HANDLE 0.7KG EXTRA
- STANDARD UNIT SUPPLIED WITH INLET FILTER/ DIPTUBE, MOUNTING GASKET AND 4 x M8 MOUNTING SCREWS
- SYSTEM DESIGN, INSTALLATION, USE AND MAINTENANCE IN ACCORDANCE WITH STATUTORY AND OTHER REQUIREMENTS
- SEE INSTALLATION DRAWING PACK FOR RESERVOIR OPTIONS
- SPECIFICATION MAY BE SUBJECT TO REVISION

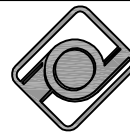
HANDLE LOAD AT 102BAR (MAX PRESSURE)
 450MM HANDLE : 591N
 625MM HANDLE : 426N



FEMALE THREAD IS 9/16-18 UNF/SAE WITH 1/4BSP MALE CONED ADAPTOR FITTED AS STANDARD.
 MANY ADAPTOR OPTIONS ARE AVAILABLE CONSULT FACTORY.

UNLESS OTHERWISE STATED:
 DIMENSIONS IN MILLIMETRES
 SURFACE FINISH IN MICROMETRES
 REMOVE SHARP EDGES

© COPYRIGHT 2024 SARUM HYDRAULICS LTD.



SARUM HYDRAULICS LTD.

SALISBURY, SP4 6EB, UK
 www.sarum-hydraulics.co.uk

TITLE

INST DG: MICROPAC MW-3 SINGLE SPEED HANDPUMP, 49CC

MATERIAL PER NOTES

FINISH PER NOTES

DRAWN NATO APP

CHKD

SCALE F SIZE SHEET OF

CAD 2-D MW-3-49

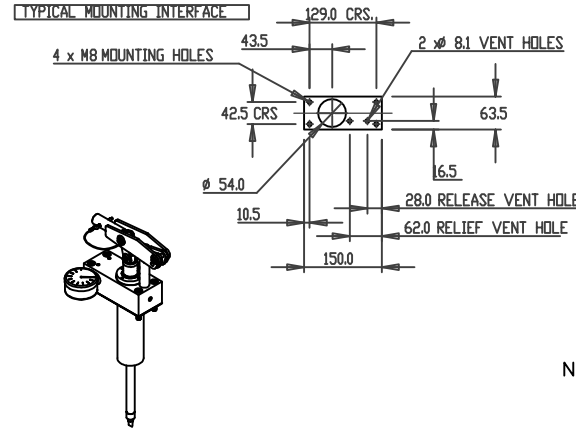
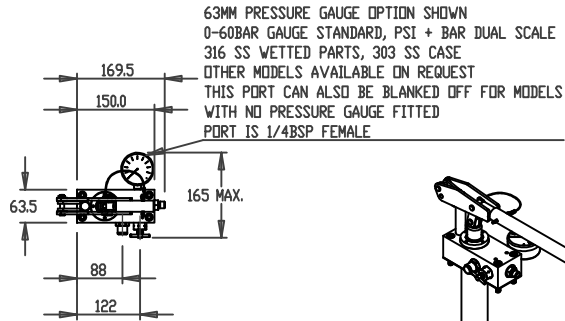
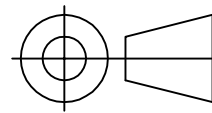
DRAWING NO.

MW-3-49

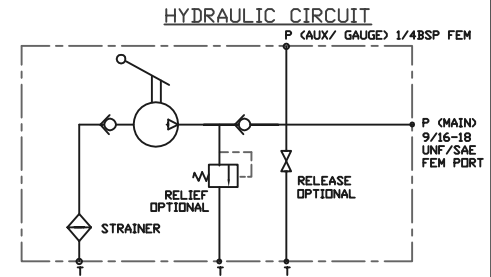
1	FIRST ISSUE	01/24
ISSUE	D.C.N.	CHANGE DESCRIPTION & DATE

01/24	DATE IMPLEMENTED
-------	------------------

IF IN DOUBT, ASK THIRD ANGLE PROJECTION

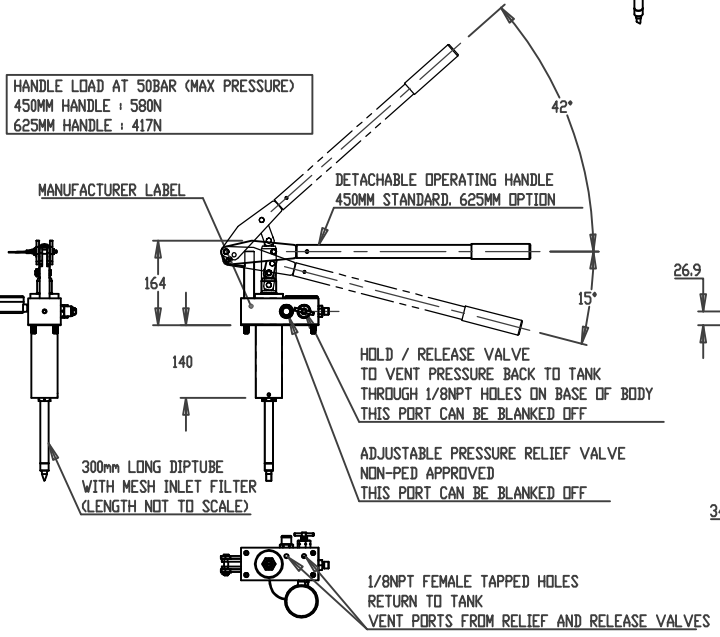


TOLERANCES UNLESS OTHERWISE STATED
GENERAL TOLERANCES RIGHT ANGLE BENDS &
NO DEC. PLACE +/-1.0mm OTHER ANGLES +/-1°
ONE DEC. PLACE +/-0.3mm MACHINED DIAMETERS
TWO DEC. PLACE +/-0.1mm CONCENTRIC WITHIN
+/-0.1mm T.I.R.
SCREW THREADS ARE ISO METRIC COARSE PITCH
TOL. 6g/6h (MED. FIT) TO BS3643
WIRE DIA./PLATE THICKNESS TO COMMERCIAL LIMITS
GEOMETRICAL TOLERANCING TO BS308 PART 3



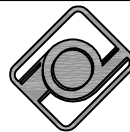
NOTES:

- THIS DRAWING SHOWS OUR MICROPAC SINGLE SPEED HANDPUMP, MW-3-10
- DISPLACEMENT IS 100CC OF FLUID PER DOUBLE STROKE (UP & DOWN ON THE HANDLE)
- MATERIALS OF CONSTRUCTION:
316 STAINLESS STEEL 1.4404
ALUMINIUM BRONZE CW307G
SMALL AMOUNTS OF 302,303,304,316,416,420,431
STAINLESS STEEL
NYLON, ACETAL, PVC
- INLET STRAINER FITTED ON DIPTUBE AS SHOWN
- POPPET TYPE OUTLET CHECK VALVE WITH REPLACEABLE SEAT
- CLEVIS FITTED, ARC OF MOVEMENT PER NOTE
- OPTIONAL ADJUSTABLE RELIEF VALVE PER NOTE
- OPTIONAL HOLD / RELEASE VALVE PER NOTE
- SEAL MATERIAL: NITRILE, PTFE, FILLED PTFE, UHMW/P STANDARD.
OPTIONS INCLUDE VITON FLUOROCARBON AND EPDM
- TEMPERATURE RANGE -30 TO +80 DEG C
- MASS 7.6KG APPROX. EXCL DETACHABLE HANDLE.
450MM HANDLE 0.5KG EXTRA
625MM HANDLE 0.7KG EXTRA
- STANDARD UNIT SUPPLIED WITH INLET FILTER/ DIPTUBE, MOUNTING GASKET AND 4 x M8 MOUNTING SCREWS
- SYSTEM DESIGN, INSTALLATION, USE AND MAINTENANCE IN ACCORDANCE WITH STATUTORY AND OTHER REQUIREMENTS
- SEE INSTALLATION DRAWING PACK FOR RESERVOIR OPTIONS
- SPECIFICATION MAY BE SUBJECT TO REVISION



UNLESS OTHERWISE STATED:
DIMENSIONS IN MILLIMETRES
SURFACE FINISH IN MICROMETRES
REMOVE SHARP EDGES

© COPYRIGHT 2024 SARUM HYDRAULICS LTD.



SARUM HYDRAULICS LTD.

SALISBURY, SP4 6EB, UK
www.sarum-hydraulics.co.uk

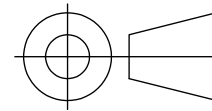
DRAWN	NATO	APP
		CHKD
SCALE	F	SIZE SHEET OF
CAD 2-D	MW-3-10 /	386000100

4	2401031	UPDATE TO LATEST LINES	N.O 01/24
3	2106301	ADD RESERVOIRS	06/21
2	2002251	UPDATE TO SOLID MODEL	02/20
1		FIRST ISSUE	09/14
ISSUE	D.C.N.	CHANGE DESCRIPTION & DATE	DATE IMPLEMENTED

TITLE
INST DG: MICROPAC MW-3 SINGLE SPEED HANDPUMP, 100CC
MATERIAL PER NOTES
FINISH PER NOTES

DRAWING NO.
MW-3-10

IF IN DOUBT, ASK THIRD ANGLE PROJECTION

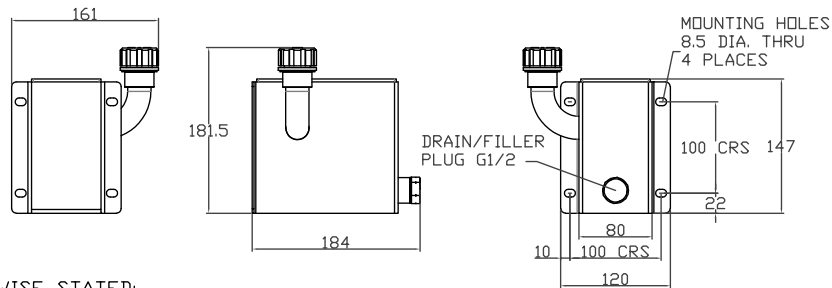
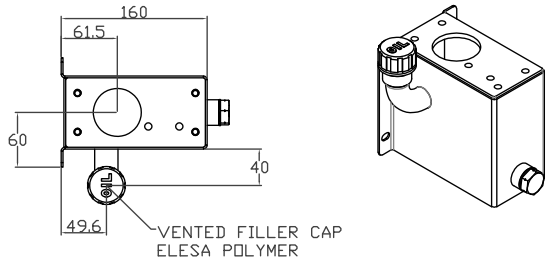


MEMO- ALSO SPECIAL PART NUMBERS ALLOCATED FOR SPECIFIC UNITS
 NOTE 901012800 HAS STANDARD VENT PLUG
 AND STANDARD RELEASE VALVE
 901012801 FITTED PRESSURISED FILLER BREATHER
 AND USES EXTERNAL NEEDLE VALVE RELEASE
 MR-F-3-01 IS INSTALLATION DRAWING FOR 1 LITRE FIXED 316

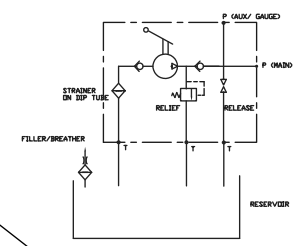
TOLERANCES UNLESS OTHERWISE STATED
 GENERAL TOLERANCES RIGHT ANGLE BENDS &
 NO DEC. PLACE +/-1.0mm OTHER ANGLES +/-1°
 ONE DEC. PLACE +/-0.3mm MACHINED DIAMETERS
 TWO DEC. PLACE +/-0.1mm CONCENTRIC WITHIN
 +/-0.1mm T.I.R.
 SCREW THREADS ARE ISO METRIC COARSE PITCH
 TOL. 6g/6H (MED. FIT) TO BS3643
 WIRE DIA./PLATE THICKNESS TO COMMERCIAL LIMITS
 GEOMETRICAL TOLERANCING TO BS308 PART 3

- NOTES:
1. MATERIALS OF CONSTRUCTION ON RESERVOIR
 STAINLESS STEEL BS970 316
 CAP POLYMER
 2. ALL DIMENSIONS IN mm
 3. MASS 2 KG DRY RESERVOIR ALONE
 4. USE DATA SHEET 001026300 FOR ORDERING CODES ON RESERVOIR
 5. ORDER PUMP AND RESERVOIR AS SEPARATE PART NUMBERS
 6. MEMO- RESERVOIR FABRICATION DG. IS 001023800
 7. THE RESERVOIR IS NOT A PRESSURE VESSEL
 IT MUST ALWAYS BE VENTED TO ATMOSPHERE
 MAXIMUM INTERNAL PRESSURE 0.3 BAR
 8. NOMINAL CAPACITY 1 LITRE (0.26USG)
 9. ATEX MODEL AVAILABLE: ADD -AX TO END OF ORDERING CODE

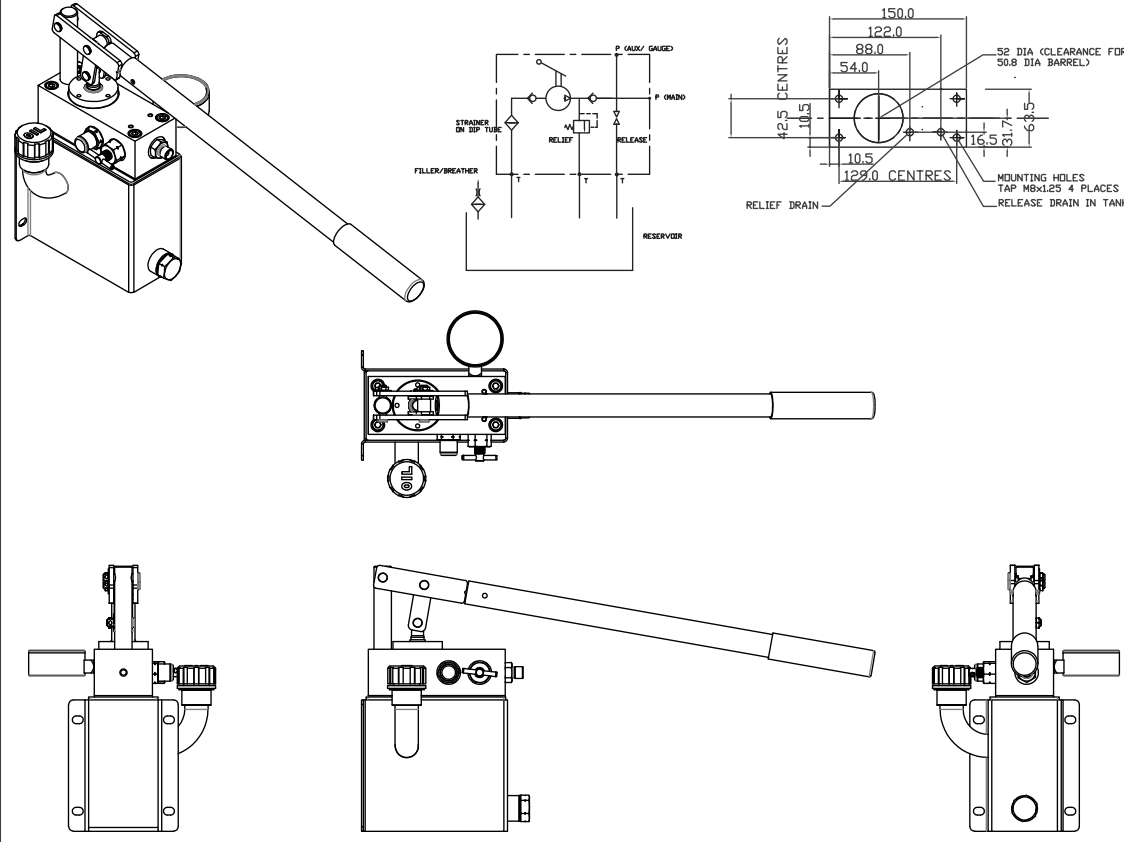
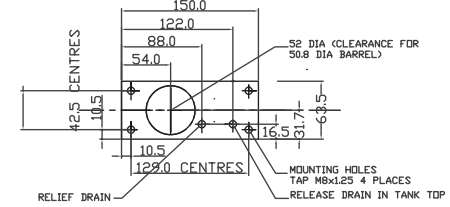
ILLUSTRATION OF MICROPAC HW PUMP MOUNTED ON RESERVOIR MR-F-3-01
 ORDER A PUMP PLUS A RESERVOIR



HYDRAULIC CIRCUIT FOR MICROPAC PUMP/RESERVOIR



MOUNTING FACE PLAN FOR MICROPAC RESERVOIR



UNLESS OTHERWISE STATED:
 DIMENSIONS IN MILLIMETRES
 SURFACE FINISH IN MICROMETRES
 REMOVE SHARP EDGES

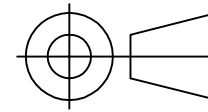
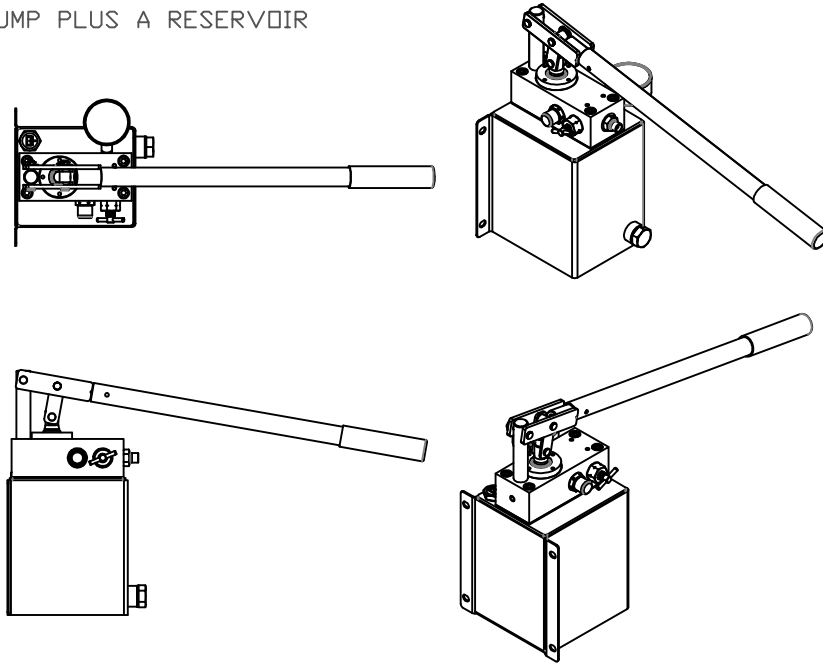
© COPYRIGHT 2020 SARUM HYDRAULICS LTD.

	SARUM HYDRAULICS LTD.		DRAWN JF	APP
	SALISBURY, SP4 6EB, UK www.sarum-hydraulics.co.uk		SCALE F SIZE	SHEET OF
TITLE		CAD 2-D MR-F-3-01		DRAWING NO. MR-F-3-01
INSTALLATION DRAWING PUMP/1 L 316 RESERVOIR		DRAWING NO.		
MATERIAL PER NOTE				
ISSUE	D.C.N.	CHANGE DESCRIPTION & DATE	DATE IMPLEMENTED	FINISH PER NOTE

3	20072201	3D UPDATE	N.D 07/20
2	1604052	ADD CAP, CORRECT FILLER/FLANGE	04/16
1		FIRST ISSUE	12/14

IF IN DOUBT, ASK THIRD ANGLE PROJECTION

ILLUSTRATION OF MICROPAC MW PUMP MOUNTED ON RESERVOIR MR-F-3-02
ORDER A PUMP PLUS A RESERVOIR

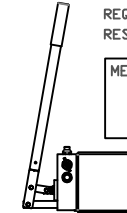
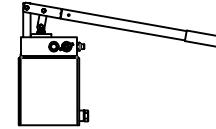


TOLERANCES UNLESS OTHERWISE STATED
 GENERAL TOLERANCES RIGHT ANGLE BENDS &
 NO DEC. PLACE +/-1.0mm OTHER ANGLES +/-1°
 ONE DEC. PLACE +/-0.3mm MACHINED DIAMETERS
 TWO DEC. PLACE +/-0.1mm CONCENTRIC WITHIN
 +/-0.1mm T.I.R.
 SCREW THREADS ARE ISO METRIC COARSE PITCH
 TOL. 6g/6h (MED. FIT) TO BS3643
 WIRE DIA./PLATE THICKNESS TO COMMERCIAL LIMITS
 GEOMETRICAL TOLERANCING TO BS308 PART 3

PERMISSIBLE MOUNTING ORIENTATION

DEFAULT/STANDARD RESERVOIR VERTICAL.
PREFERRED ORIENTATION

RESERVOIR HORIZONTAL UPON REQUEST
REQUEST AT TIME OF ORDERING TO ACHIEVE FULL CAPACITY.
RESERVOIR REQUIRES SEALING AND LEAK TESTING IN PRODUCTION

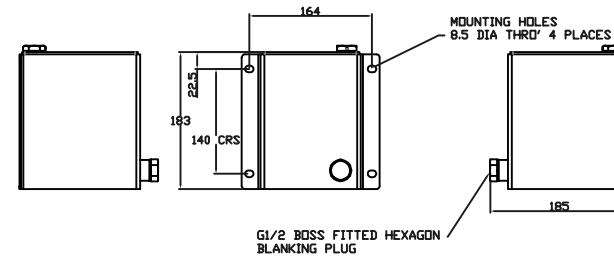
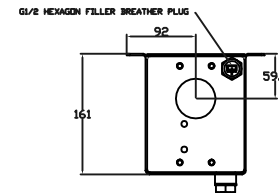


MEMO: HORIZONTAL MOUNT INLET KIT 303/DELTRIN IS
001069400
HORIZONTAL MOUNT INLET KIT 316/316 FILTER IS
001069500

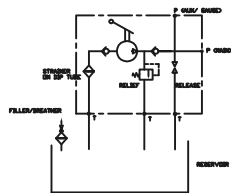
NOTES

DIMENSIONS RESERVOIR MR-F-3-02

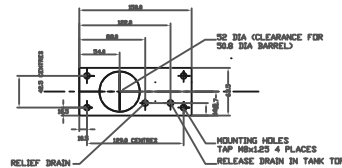
1. MATERIALS OF CONSTRUCTION
316 STAINLESS 1.4404
CAP POLYMER
2. ALL DIMENSIONS IN mm
3. MASS 3 KG DRY
4. USE DATA SHEET 001026300 FOR ORDERING CODES
5. ORDER PUMP AND RESERVOIR AS SEPARATE ITEMS
6. MEMO- RESERVOIR FABRICATION DG. IS 001005400
7. THE RESERVOIR IS NOT A PRESSURE VESSEL.
IT MUST ALWAYS BE VENTED TO ATMOSPHERE
MAXIMUM INTERNAL PRESSURE 0.3 BARG
8. NOMINAL CAPACITY 2.5 LITRES (0.67USG)
9. ATEX MODEL AVAILABLE; ADD -AX TO END OF ORDERING CODE
10. HORIZONTAL MOUNTING AVAILABLE; PLEASE REQUEST AT TIME OF ORDER



HYDRAULIC CIRCUIT FOR MICROPAC PUMP/RESERVOIR



MOUNTING FACE PLAN FOR MICROPAC RESERVOIR



UNLESS OTHERWISE STATED:
DIMENSIONS IN MILLIMETRES
SURFACE FINISH IN MICROMETRES
REMOVE SHARP EDGES

© COPYRIGHT 2020 SARUM HYDRAULICS LTD.



SARUM HYDRAULICS LTD.

SALISBURY, SP4 6EB, UK
www.sarum-hydraulics.co.uk

DRAWN JF APP

CHKD

SCALE F SIZE SHEET OF

CAD 2-D MR-F-3-02

DRAWING NO.

MR-F-3-02

5	2007221	HORIZONTAL MOUNTING KIT MEMO	N.D 07/20
4	2001121	ADD NOTE ON REDUCED VOL HORIZ. MT.	01/20
3	1905262	ADDED 3D DETAIL	05/19
2	1309041	ADDED CIRCUIT DIAGRAM	09/13
1		FIRST ISSUE	01/07
ISSUE	D.C.N.	CHANGE DESCRIPTION & DATE	DATE IMPLEMENTED

TITLE
INSTALLATION DRAWING PUMP/2.5 L 316 RESERVOIR

MATERIAL PER NOTE

FINISH PER NOTE

IF IN DOUBT, ASK THIRD ANGLE PROJECTION

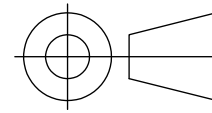
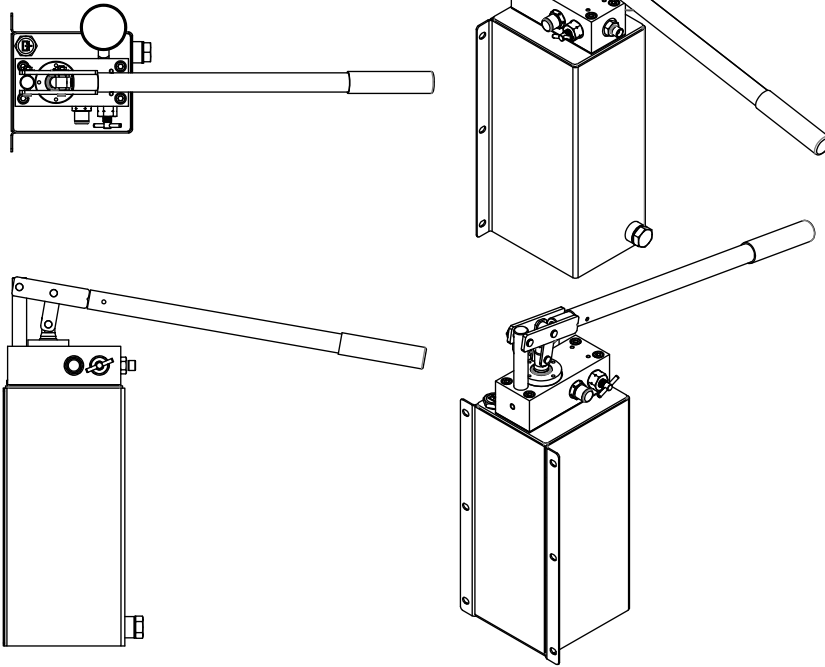
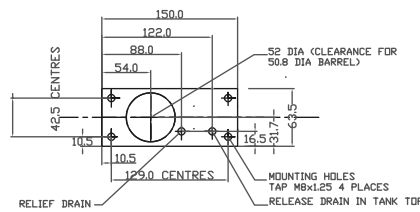
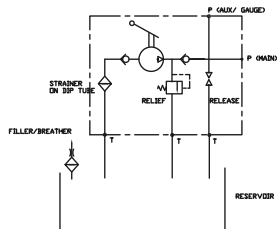


ILLUSTRATION OF MICROPAC MW PUMP MOUNTED ON RESERVOIR MR-F-3-05
ORDER A PUMP PLUS A RESERVOIR



HYDRAULIC CIRCUIT FOR MICROPAC PUMP/RESERVOIR MOUNTING FACE PLAN FOR MICROPAC RESERVOIR



UNLESS OTHERWISE STATED:
DIMENSIONS IN MILLIMETRES
SURFACE FINISH IN MICROMETRES
REMOVE SHARP EDGES

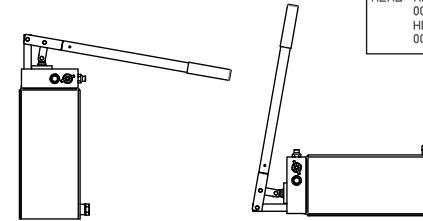
TOLERANCES UNLESS OTHERWISE STATED
GENERAL TOLERANCES RIGHT ANGLE BENDS &
NO DEC. PLACE +/-1.0mm OTHER ANGLES +/-1°
ONE DEC. PLACE +/-0.3mm MACHINED DIAMETERS
TWO DEC. PLACE +/-0.1mm CONCENTRIC WITHIN
+/-0.1mm T.I.R.
SCREW THREADS ARE ISO METRIC COARSE PITCH
TOL. 6g/6H (MED. FIT) TO BS3643
WIRE DIA./PLATE THICKNESS TO COMMERCIAL LIMITS
GEOMETRICAL TOLERANCING TO BS308 PART 3

PERMISSIBLE MOUNTING ORIENTATION

DEFAULT/STANDARD RESERVOIR VERTICAL. PREFERRED ORIENTATION

RESERVOIR HORIZONTAL MOUNTING UPON REQUEST
REQUEST AT TIME OF ORDERING TO ACHIEVE FULL CAPACITY.
RESERVOIR REQUIRES SEALING AND LEAK TESTING IN PRODUCTION.

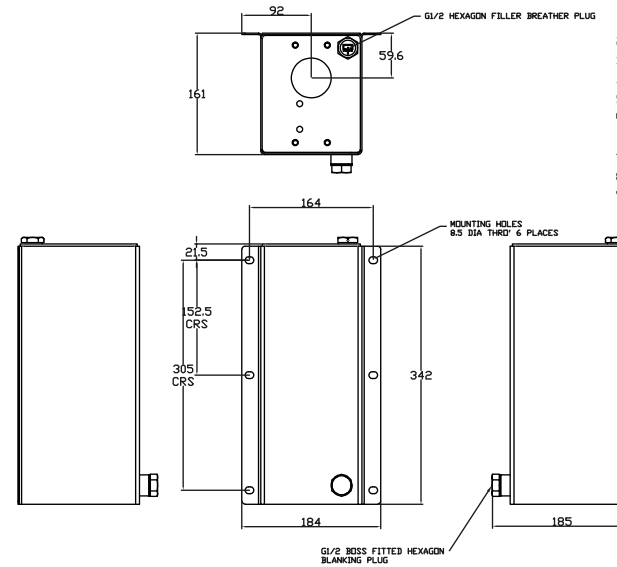
MEMO: HORIZONTAL MOUNT INLET KIT 303/DELRIN IS 001069400
HORIZONTAL MOUNT INLET KIT 316/316 FILTER IS 001069500



DIMENSIONS RESERVOIR MR-F-3-05

NOTES

- MATERIALS OF CONSTRUCTION
316 STAINLESS 1.4404
CAP POLYMER
- ALL DIMENSIONS IN mm
- MASS 4.5 KG DRY
- USE DATA SHEET 001026300 FOR ORDERING CODES
- ORDER PUMP AND RESERVOIR AS SEPARATE ITEMS
- THE RESERVOIR IS NOT A PRESSURE VESSEL.
IT MUST ALWAYS BE VENTED TO ATMOSPHERE
MAXIMUM INTERNAL PRESSURE 0.3 BARG
- NOMINAL CAPACITY 5 LITRES (1.3USG)
- ATEX MODEL AVAILABLE: ADD -AX TO END OF ORDERING CODE
- HORIZONTAL MOUNTING AVAILABLE; PLEASE REQUEST AT TIME OF ORDER



© COPYRIGHT 2020 SARUM HYDRAULICS LTD.



SARUM HYDRAULICS LTD.

SALISBURY, SP4 6EB, UK
www.sarum-hydraulics.co.uk

TITLE
INSTALLATION DRAWING PUMP/5 L 316 RESERVOIR

MATERIAL PER NOTE
FINISH PER NOTE

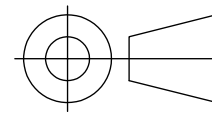
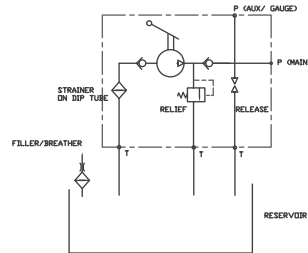
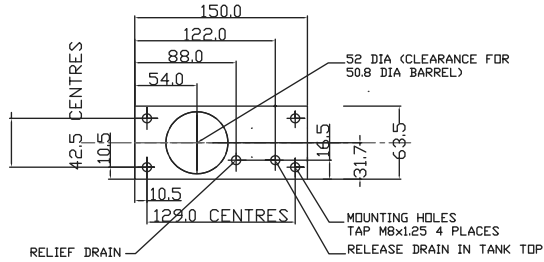
DRAWN	JF	APP	
		CHKD	
SCALE	F	SIZE	SHEET OF
CAD	2-D	MR-F-3-05	
DRAWING NO.	MR-F-3-05		

ISSUE	D.C.N.	CHANGE DESCRIPTION & DATE	DATE IMPLEMENTED
5	2001121	ADD NOTE ON REDUCED VOL HORIZ. MT.	01/20
4	1905261	3D UPDATE	05/19
3	1101181	NEW PART NO. QUOTED	06/12
2	1101181	TITLE ERROR CORRECTED	01/11
1		FIRST ISSUE	01/07

IF IN DOUBT, ASK THIRD ANGLE PROJECTION

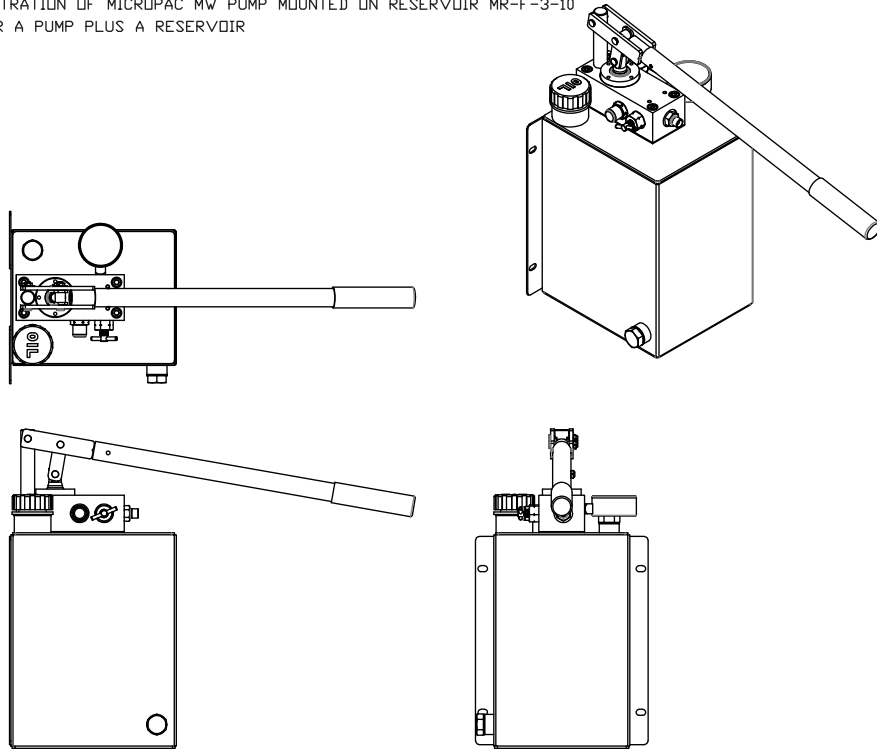
MOUNTING FACE PLAN FOR MICRO PAC RESERVOIR

HYDRAULIC CIRCUIT FOR MICRO PAC PUMP/RESERVOIR



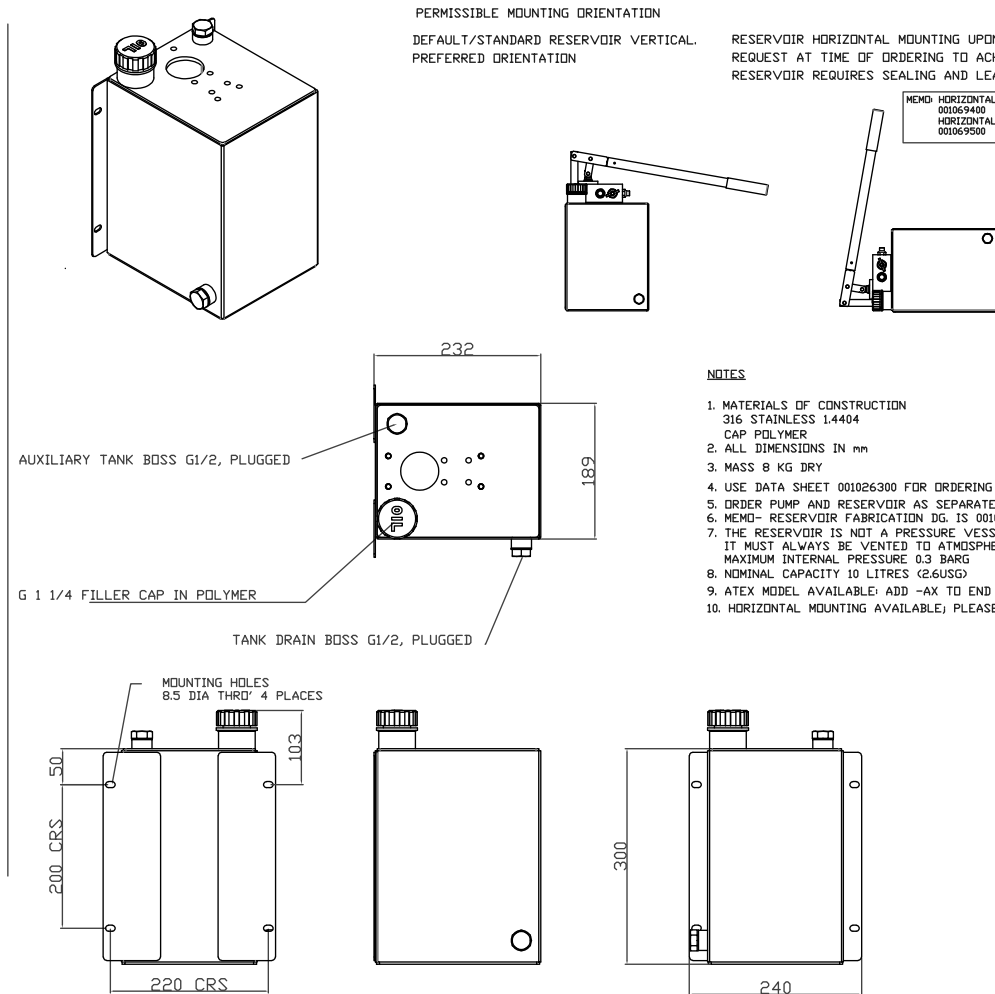
TOLERANCES UNLESS OTHERWISE STATED
 GENERAL TOLERANCES RIGHT ANGLE BENDS &
 NO DEC. PLACE +/-1.0mm OTHER ANGLES +/-1°
 ONE DEC. PLACE +/-0.3mm MACHINED DIAMETERS
 TWO DEC. PLACE +/-0.1mm CONCENTRIC WITHIN
 +/-0.1mm T.I.R.
 SCREW THREADS ARE ISO METRIC COARSE PITCH
 TOL. 6g/6H (MED. FIT) TO BS3643
 WIRE DIA./PLATE THICKNESS TO COMMERCIAL LIMITS
 GEOMETRICAL TOLERANCING TO BS308 PART 3

ILLUSTRATION OF MICRO PAC MW PUMP MOUNTED ON RESERVOIR MR-F-3-10
 ORDER A PUMP PLUS A RESERVOIR



UNLESS OTHERWISE STATED:
 DIMENSIONS IN MILLIMETRES
 SURFACE FINISH IN MICROMETRES
 REMOVE SHARP EDGES

DIMENSIONS RESERVOIR MR-F-3-10



© COPYRIGHT 2020 SARUM HYDRAULICS LTD.



SARUM HYDRAULICS LTD.

SALISBURY, SP4 6EB, UK
 www.sarum-hydraulics.co.uk

TITLE
 INSTALLATION DRAWING PUMP/10 L 316 RESERVOIR

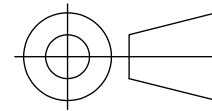
MATERIAL PER NOTE

FINISH PER NOTE

DRAWN	JF	APP	
		CHKD	
SCALE	F	SIZE	SHEET OF
CAD	2-D	MR-F-3-10	
DRAWING NO.	MR-F-3-10		

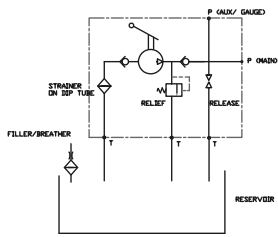
ISSUE	D.C.N.	CHANGE DESCRIPTION & DATE	DATE IMPLEMENTED
5	1911231	MIRROR FILLER AND RETURN	11/19
4	1910031	UPDATE TO 3D MODEL ACTUAL	10/19
3	1712011	ADD PUMP DETAIL	12/17
2	1604051	ADD CAP & MASS	01/16
1		FIRST ISSUE	10/12

IF IN DOUBT, ASK THIRD ANGLE PROJECTION

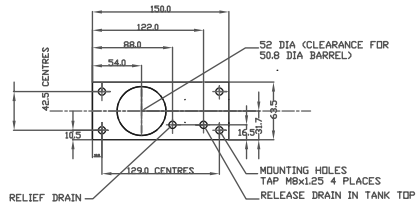


TOLERANCES UNLESS OTHERWISE STATED
 GENERAL TOLERANCES RIGHT ANGLE BENDS &
 NO DEC. PLACE +/-1.0mm OTHER ANGLES +/-1°
 ONE DEC. PLACE +/-0.3mm MACHINED DIAMETERS
 TWO DEC. PLACE +/-0.1mm CONCENTRIC WITHIN
 +/-0.1mm T.I.R.
 SCREW THREADS ARE ISO METRIC COARSE PITCH
 TOL. 6g/6H (MED. FIT) TO BS3643
 WIRE DIA./PLATE THICKNESS TO COMMERCIAL LIMITS
 GEOMETRICAL TOLERANCING TO BS308 PART 3

HYDRAULIC CIRCUIT FOR MICROPAK PUMP/RESERVOIR



MOUNTING FACE PLAN FOR MICROPAK RESERVOIR



NOTES

- MATERIALS OF CONSTRUCTION
 316 STAINLESS 1.4404
 CAP POLYMER
- ALL DIMENSIONS IN mm
- MASS 18 KG DRY
- USE DATA SHEET 001026300 FOR ORDERING CODES
- ORDER PUMP AND RESERVOIR AS SEPARATE ITEMS
- MEMO- RESERVOIR FABRICATION DG. IS 001069300
- THE RESERVOIR IS NOT A PRESSURE VESSEL.
 IT MUST ALWAYS BE VENTED TO ATMOSPHERE
 MAXIMUM INTERNAL PRESSURE 0.3 BARG
- NOMINAL CAPACITY 50 LITRES (13.2USG)
- ATEX MODEL AVAILABLE: ADD -AX TO END OF ORDERING CODE

DRAWING OF MICROPAK MR 50 LITRE RESERVOIR MR-F-3-50
 ORDER A PUMP PLUS A RESERVOIR

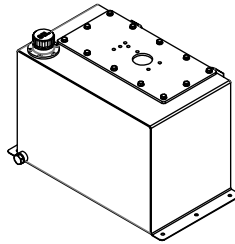
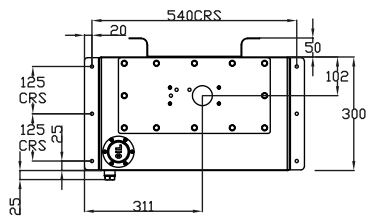
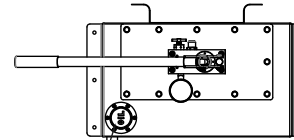
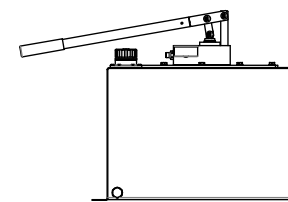
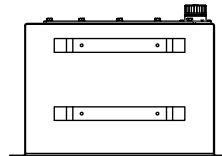
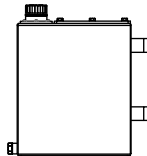
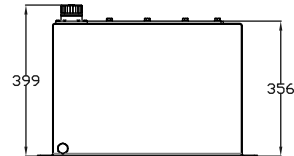
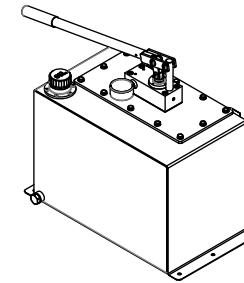


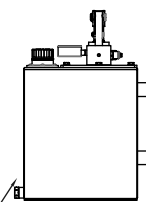
ILLUSTRATION OF MICROPAK MW PUMP MOUNTED ON RESERVOIR MR-F-3-50
 ORDER A PUMP PLUS A RESERVOIR



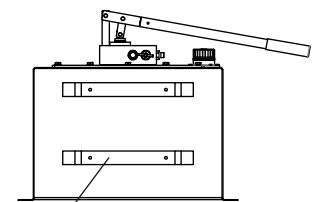
FILLER/BREATHER
 IN POLYMER



DRAIN PLUG
 G1/2



HOSE STOWAGE BRACKETS



UNLESS OTHERWISE STATED:
 DIMENSIONS IN MILLIMETRES
 SURFACE FINISH IN MICROMETRES
 REMOVE SHARP EDGES

© COPYRIGHT 2020 SARUM HYDRAULICS LTD.



SARUM HYDRAULICS LTD.

SALISBURY, SP4 6EB, UK
 www.sarum-hydraulics.co.uk

DRAWN JF	APP
	CHKD
SCALE F SIZE	SHEET OF
CAD 2-D MR-F-3-50	

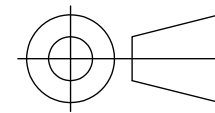
TITLE
 INSTALLATION DRAWING PUMP/50 L 316 RESERVOIR

DRAWING NO.
MR-F-3-50

3	2007232	REDRAW FROM MODEL	07/20
2	2003041	ADD HOSE STOWAGE BRACKET	03/20
1		FIRST ISSUE	10/08
ISSUE	D.C.N.	CHANGE DESCRIPTION & DATE	DATE IMPLEMENTED

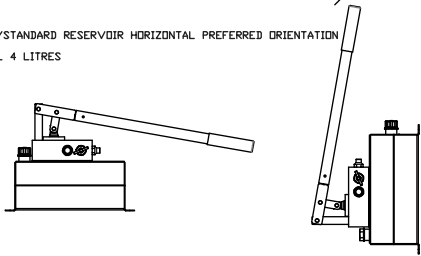
MATERIAL PER NOTE
 FINISH PER NOTE

IF IN DOUBT, ASK THIRD ANGLE PROJECTION



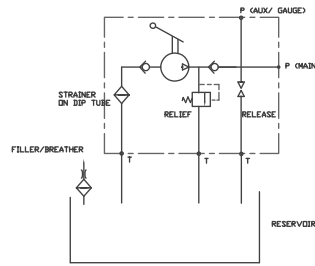
TOLERANCES UNLESS OTHERWISE STATED
 GENERAL TOLERANCES RIGHT ANGLE BENDS &
 NO DEC. PLACE +/-1.0mm OTHER ANGLES +/-1°
 ONE DEC. PLACE +/-0.3mm MACHINED DIAMETERS
 TWO DEC. PLACE +/-0.1mm CONCENTRIC WITHIN
 +/-0.1mm T.I.R.
 SCREW THREADS ARE ISO METRIC COARSE PITCH
 TOL. 6g/6H (MED. FIT) TO BS3643
 WIRE DIA./PLATE THICKNESS TO COMMERCIAL LIMITS
 GEOMETRICAL TOLERANCING TO BS308 PART 3

DEFAULT/STANDARD RESERVOIR HORIZONTAL PREFERRED ORIENTATION FOR FULL 4 LITRES



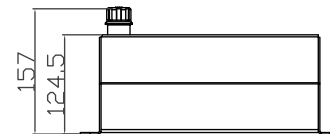
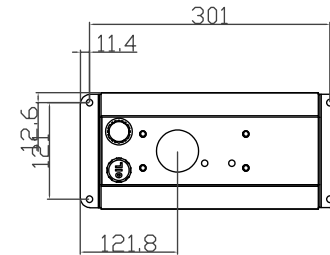
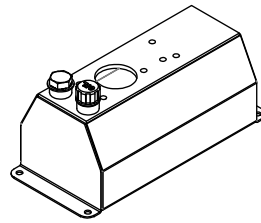
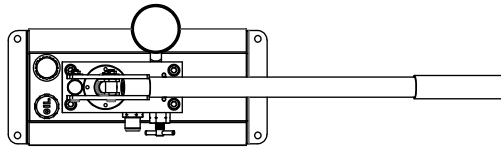
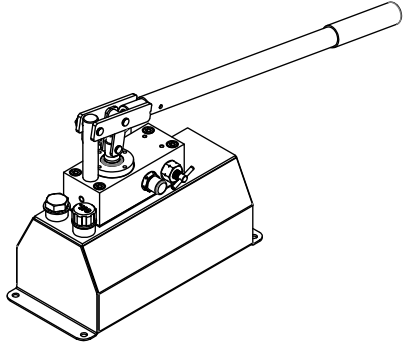
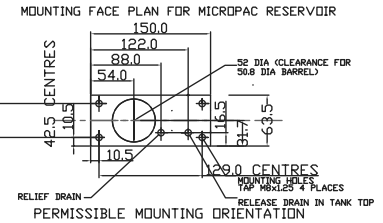
VERTICAL OPERATION REQUIRES SPECIAL RESERVOIR WITH END FILLER. CONSULT FACTORY

HYDRAULIC CIRCUIT FOR MICRO PAC PUMP/RESERVOIR



NOTES

1. MATERIALS OF CONSTRUCTION
 316 STAINLESS 1.4404
 CAP POLYMER
2. ALL DIMENSIONS IN mm
3. MASS 5 KG DRY
4. USE DATA SHEET 001026300 FOR ORDERING CODES
5. ORDER PUMP AND RESERVOIR AS SEPARATE ITEMS
6. THE RESERVOIR IS NOT A PRESSURE VESSEL. IT MUST ALWAYS BE VENTED TO ATMOSPHERE. MAXIMUM INTERNAL PRESSURE 0.3 BARG
7. NOMINAL CAPACITY 4 LITRES (1 USG)
8. ATEX MODEL AVAILABLE: ADD -AX TO END OF ORDERING CODE



DIMENSIONS RESERVOIR MR-F-3-4E

ILLUSTRATION OF MICRO PAC MW PUMP MOUNTED ON RESERVOIR MR-F-3-4E

ORDER A PUMP PLUS A RESERVOIR
 UNLESS OTHERWISE STATED:
 DIMENSIONS IN MILLIMETRES
 SURFACE FINISH IN MICROMETRES
 REMOVE SHARP EDGES

© COPYRIGHT 2020 SARUM HYDRAULICS LTD.



SARUM HYDRAULICS LTD.

SALISBURY, SP4 6EB, UK
 www.sarum-hydraulics.co.uk

DRAWN JF	APP
	CHKD
SCALE F SIZE	SHEET OF
CAD 2-D MR-F-3-4E	

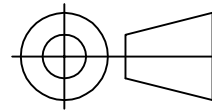
TITLE
 INSTALLATION DRAWING PUMP/4L 316 ERGO RESERVOIR

MATERIAL PER NOTE
 FINISH PER NOTE

DRAWING NO.
MR-F-3-4E

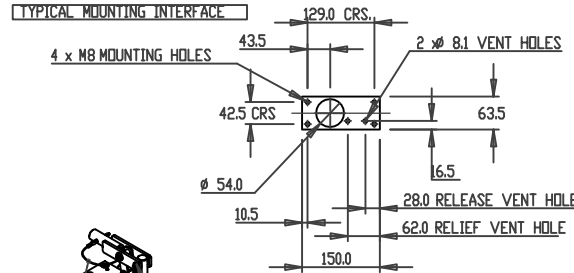
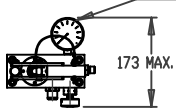
3	2007241	REDRAW FROM MODEL	07/20
2	1511105	MOD RESERVOIR	11/15
1		FIRST ISSUE	05/12
ISSUE	D.C.N.	CHANGE DESCRIPTION & DATE	DATE IMPLEMENTED

IF IN DOUBT, ASK THIRD ANGLE PROJECTION



TOLERANCES UNLESS OTHERWISE STATED
 GENERAL TOLERANCES RIGHT ANGLE BENDS &
 NO DEC. PLACE +/-1.0mm OTHER ANGLES +/-1°
 ONE DEC. PLACE +/-0.3mm MACHINED DIAMETERS
 TWO DEC. PLACE +/-0.1mm CONCENTRIC WITHIN
 +/-0.1mm T.I.R.
 SCREW THREADS ARE ISO METRIC COARSE PITCH
 TOL. 6g/6h (MED. FIT) TO BS3643
 WIRE DIA./PLATE THICKNESS TO COMMERCIAL LIMITS
 GEOMETRICAL TOLERANCING TO BS308 PART 3

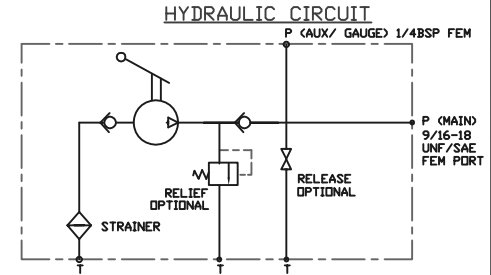
63MM PRESSURE GAUGE OPTION SHOWN
 316 SS WETTED PARTS, 303 SS CASE, SAFETY GLASS WINDOW
 ON ATEX MODELS.
 ALL-316 STAINLESS GAUGES AVAILABLE UPON REQUEST
 THIS PORT CAN ALSO BE BLANKED OFF FOR MODELS
 WITH NO PRESSURE GAUGE FITTED
 PORT IS 1/4BSP FEMALE



316 STAINLESS / CHROMED PIVOT PINS FITTED
 316 STAINLESS WASHERS AND SPACERS FITTED
 ON ATEX MODELS

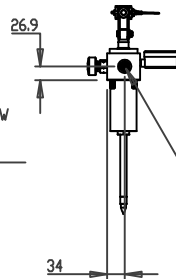
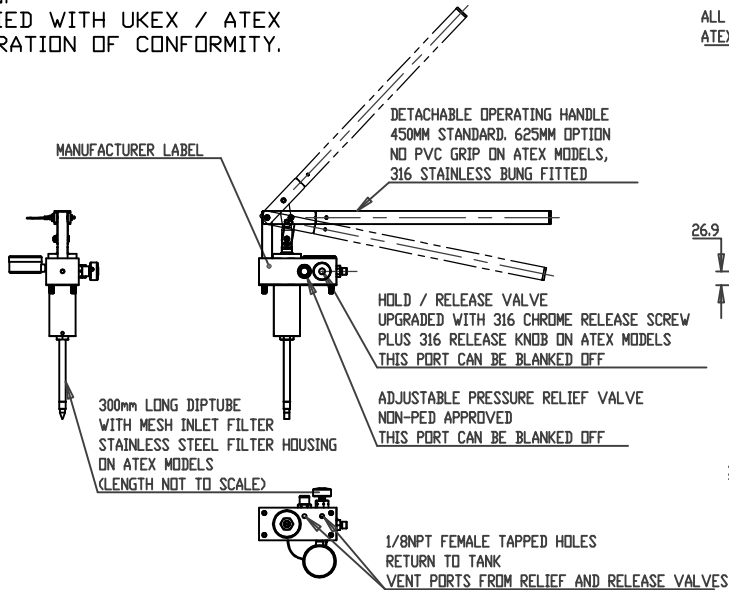
ALL STAINLESS LANYARD ON
 ATEX MODELS

SPECIAL REQUIREMENTS: 007046000 AX
 UPGRADE KIT FITTED MAKING PUMP
 SUITABLE FOR USE IN POTENTIALLY
 EXPLOSIVE ATMOSPHERES.
 SEE DATASHEET FOR FULL ATEX / IECEX
 CODING.
 SUPPLIED WITH UKEX / ATEX
 DECLARATION OF CONFORMITY.

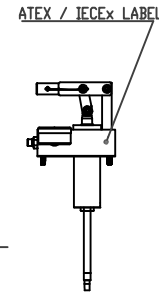


NOTES:

- THIS DRAWING SHOWS THE ATEX/IECEX UPGRADE KIT FITTED TO OUR MW-3 HANDPUMP. ADD -AX TO END OF ORDERING CODE. THIS UPGRADE PROVIDES ALL 316 STAINLESS/BRONZE CW307G EXTERNAL MATERIALS APART FROM THE 304 CASE OF GAUGE (SEE NOTE)
- MATERIALS OF CONSTRUCTION:
 316 STAINLESS STEEL 1.4404
 ALUMINIUM BRONZE CW307G
 SMALL AMOUNTS OF 302,303,304,316,416,420,431 STAINLESS STEEL WETTED PARTS
- INLET STRAINER FITTED ON DIPTUBE AS SHOWN
- POPPET TYPE OUTLET CHECK VALVE WITH REPLACEABLE SEAT
- CLEVIS FITTED, ARC OF MOVEMENT PER NOTE
- OPTIONAL ADJUSTABLE RELIEF VALVE PER NOTE
- OPTIONAL HOLD / RELEASE VALVE PER NOTE
- SEAL MATERIAL: NITRILE, PTFE, FILLED PTFE, UHMW/P STANDARD.
 OPTIONS INCLUDE VITON FLUOROCARBON AND EPDM
- TEMPERATURE RANGE -30 TO +80 DEG C
- SEE NON-ATEX DRAWINGS FOR EACH BASE MODEL DIMENSIONS
- STANDARD UNIT SUPPLIED WITH INLET FILTER/ DIPTUBE, MOUNTING GASKET AND 4 x M8 MOUNTING SCREWS
- SYSTEM DESIGN, INSTALLATION, USE AND MAINTENANCE IN ACCORDANCE WITH STATUTORY AND OTHER REQUIREMENTS
- SEE INSTALLATION DRAWING PACK FOR RESERVOIR OPTIONS
- UNDER THE TERMS OF OUR ATEX/IECEX/UKEX CERTIFICATION, THE PRODUCT CANNOT BE CHANGED.

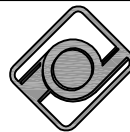


FEMALE THREAD IS 9/16-18 UNF/SAE WITH
 1/4BSP MALE CONED ADAPTOR FITTED AS STANDARD.
 MANY ADAPTOR OPTIONS ARE AVAILABLE
 CONSULT FACTORY.



UNLESS OTHERWISE STATED:
 DIMENSIONS IN MILLIMETRES
 SURFACE FINISH IN MICROMETRES
 REMOVE SHARP EDGES

© COPYRIGHT 2024 SARUM HYDRAULICS LTD.



SARUM HYDRAULICS LTD.

SALISBURY, SP4 6EB, UK
 www.sarum-hydraulics.co.uk

TITLE
INST DG: MICROPAC MW-3 ATEX UPGRADE

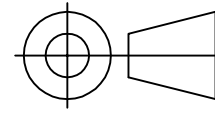
DRAWN	NATO	APP
		CHKD
SCALE	F	SIZE SHEET OF
CAD	2-D	MW-3-XX-AX
DRAWING NO.		

MW-3-XX-AX

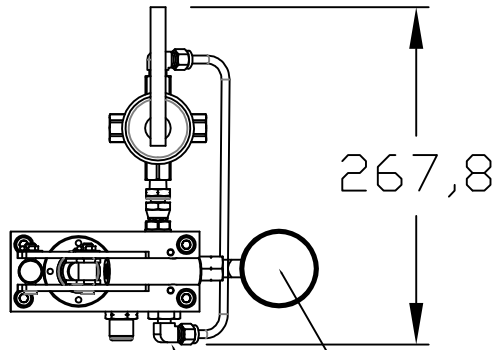
1	FIRST ISSUE	01/24
ISSUE	D.C.N.	CHANGE DESCRIPTION & DATE
		DATE IMPLEMENTED

MATERIAL PER NOTES
 FINISH PER NOTES

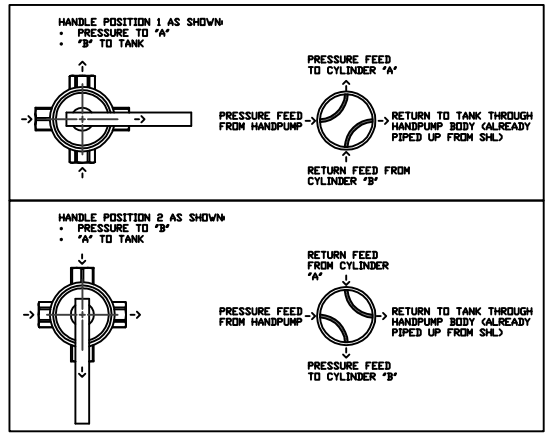
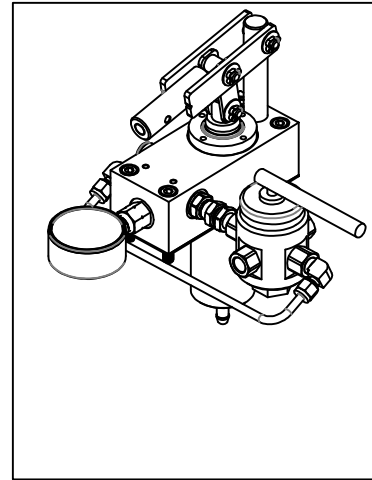
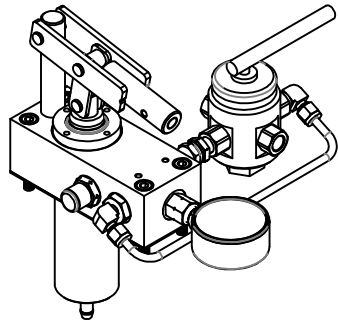
IF IN DOUBT, ASK THIRD ANGLE PROJECTION



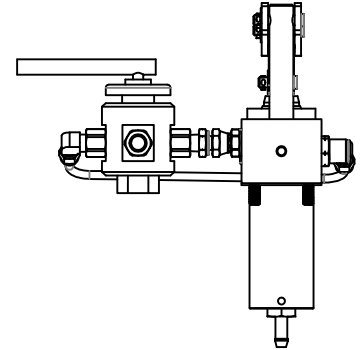
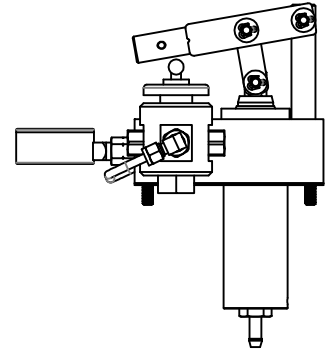
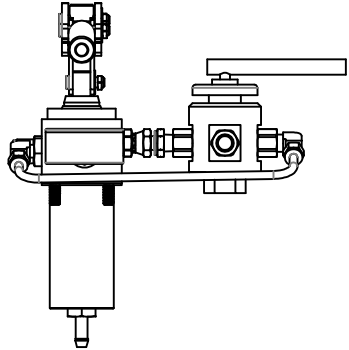
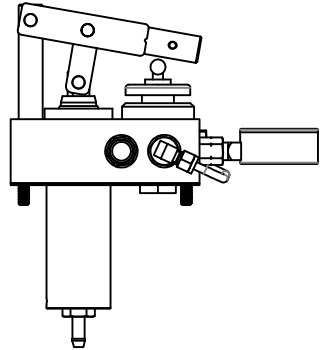
TOLERANCES UNLESS OTHERWISE STATED
 GENERAL TOLERANCES NO DEC. PLACE +/-1.0mm
 ONE DEC. PLACE +/-0.3mm
 TWO DEC. PLACE +/-0.1mm
 RIGHT ANGLE BENDS & OTHER ANGLES +/-1°
 MACHINED DIAMETERS CONCENTRIC WITHIN +/-0.1mm T.I.R.
 SCREW THREADS ARE ISO METRIC COARSE PITCH
 TOL. 6g/6H (MED. FIT) TO BS3643
 WIRE DIA./PLATE THICKNESS TO COMMERCIAL LIMITS
 GEOMETRICAL TOLERANCING TO BS308 PART 3



267,8



PRESSURE GAUGE MOVES HERE IF REQUIRED WHEN 4-WAY VALVE IS FITTED
 RETURN TUBE FROM VALVE PIPED BACK TO PUMP BODY FOR VENTING BACK TO RESERVOIR



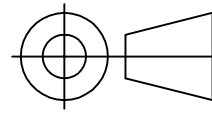
UNLESS OTHERWISE STATED:
 DIMENSIONS IN MILLIMETRES
 SURFACE FINISH IN MICROMETRES
 REMOVE SHARP EDGES

© COPYRIGHT 2022 SARUM HYDRAULICS LTD.

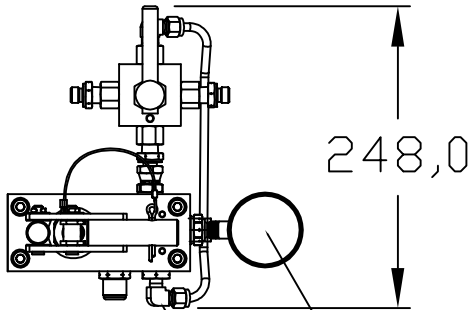
					SARUM HYDRAULICS LTD.		DRAWN NO	APP
					SALISBURY, SP4 6EB, UK www.sarum-hydraulics.co.uk			CHKD
				TITLE		SCALE F SIZE	SHEET	OF
				ILLUSTRATION OF PUMP & 4-WAY VALVE ARRANGEMENT		CAD 2-D	007062701	
				MATERIAL --		DRAWING NO.		007062701
1		FIRST ISSUE	02/22	FINISH --				
ISSUE	D.C.N.	CHANGE DESCRIPTION & DATE	DATE IMPLEMENTED					

IF IN DOUBT, ASK

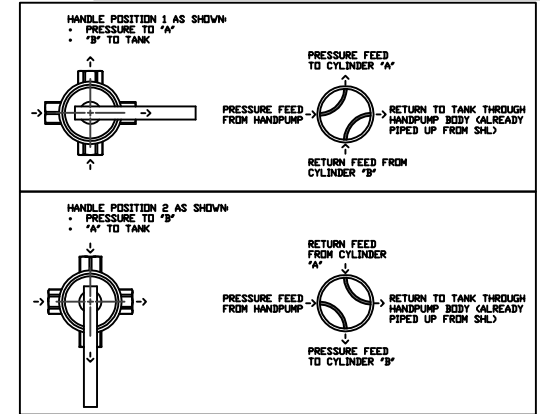
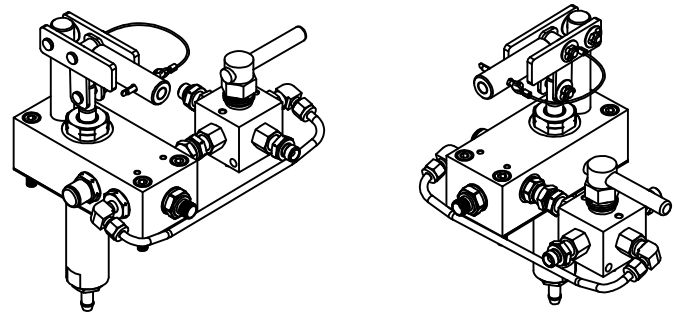
THIRD ANGLE PROJECTION



TOLERANCES UNLESS OTHERWISE STATED
 GENERAL TOLERANCES RIGHT ANGLE BENDS &
 NO DEC. PLACE +/-1.0mm OTHER ANGLES +/-1°
 ONE DEC. PLACE +/-0.3mm MACHINED DIAMETERS
 TWO DEC. PLACE +/-0.1mm CONCENTRIC WITHIN
 +/-0.1mm T.I.R.
 SCREW THREADS ARE ISO METRIC COARSE PITCH
 TOL. 6g/6h (MED. FIT) TO BS3643
 WIRE DIA./PLATE THICKNESS TO COMMERCIAL LIMITS
 GEOMETRICAL TOLERANCING TO BS308 PART 3

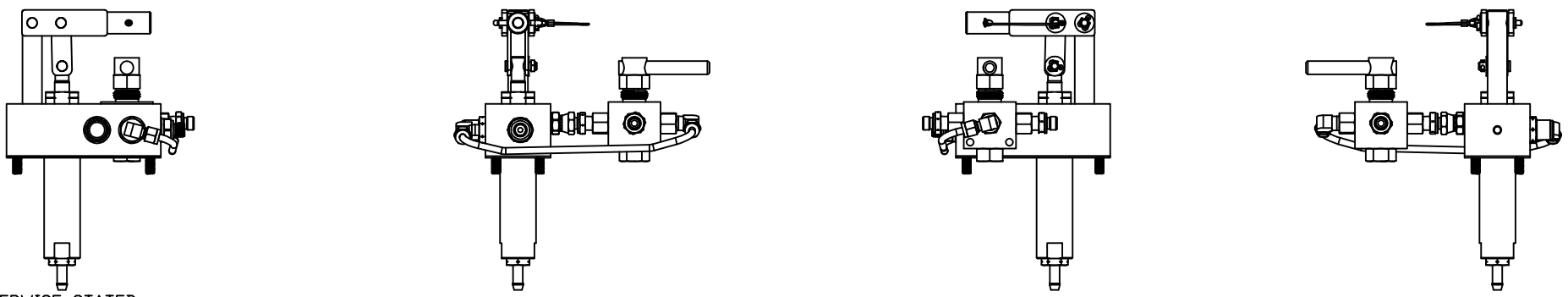


248,0



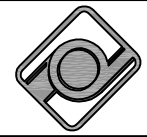
PRESSURE GAUGE MOVES HERE IF REQUIRED WHEN 4-WAY VALVE IS FITTED

RETURN TUBE FROM VALVE PIPED BACK TO PUMP BODY FOR VENTING BACK TO RESERVOIR



UNLESS OTHERWISE STATED:
 DIMENSIONS IN MILLIMETRES
 SURFACE FINISH IN MICROMETRES
 REMOVE SHARP EDGES

© COPYRIGHT 2024 SARUM HYDRAULICS LTD.



SARUM HYDRAULICS LTD.
 SALISBURY, SP4 6EB, UK
 www.sarum-hydraulics.co.uk

DRAWN	NATO	APP
		CHKD
SCALE	F SIZE	SHEET OF
CAD 2-D	007069700	
DRAWING NO.		

TITLE
 ILLUSTRATION OF MW-3-07 WITH 700BAR 4-WAY VALVE

007069700

1	FIRST ISSUE	01/24
ISSUE	D.C.N.	CHANGE DESCRIPTION & DATE
		DATE IMPLEMENTED

MATERIAL	--
FINISH	--