

Micropac® MR Reservoirs Index for pdf drawings

What do we offer?

Fixed reservoirs for frame or bench mount.

Carry round Portables with a foot plate

Carry round traditional trough reservoir

2 wheel portable trolley units

4 wheel turntable mounted trolley unit

Anodised alloy 5252, 316 stainless 1.4404

ATEX versions on all options. Consult factory.

Reservoirs for our MW series. Our MD series use the same reservoirs, just change the code from "MR" to "MRD".

Cost effective custom reservoirs such as adding extra bosses or a visual level indicator or a dipstick. Consult factory.

ORDERING CODES FROM DATA SHEET

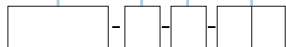
Model number	
MR	To suit MW single speed
MRD	To suit MD two speed

Type	
P	Portable
F	Fixed

Material	
3	316 Stainless steel
A	Anodised aluminium alloy

Please refer to 'Dimensions' section in data sheet for available material options

Capacity	
01	1 litre
02	2.5 litres
05	5 litres
10	10 litres
20	20 litres
1T	10 litre with 2 wheel trolley
2T	20 litre with 2 wheel trolley
5T	50 litre with 2 wheel trolley
5M	50 litre with 4 wheel trolley
4E	4 litre 'Ergo'
5E	5 litre 'Ergo'
1E	14 litre 'Ergo'
TR	8 litre 'Trough'

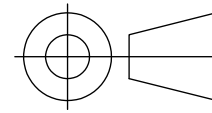


Page	Order code	Description
2	MR-P-3-05	PORTABLE 316 5L Carry around
3	MR-P-3-5E	PORTABLE 316 5L Carry around ergo style
4	MR-P-3-10	PORTABLE 316 10L Carry around
5	MR-P-3-1E	PORTABLE 316 14L Carry around ergo style
6	MR-P-3-20	PORTABLE 316 20L Carry around
7	MR-P-3-1T	MOBILE 316 10L 2 wheel trolley with hose stowage
8	MR-P-3-2T	MOBILE 316 20L 2 wheel trolley with hose stowage
9	MR-P-3-5T	MOBILE 316 50L 2 wheel trolley with hose stowage
10	MR-P-3-TR	PORTABLE 316 8L Carry around traditional trough
11	MR-P-3-5M	MOBILE 316 50L 4 wheel turntable trolley
12	MR-P-3-7M	MOBILE 316 75L 4 wheel turntable trolley
13	MR-P-3-0M	MOBILE 316 100L 4 wheel turntable trolley
14	MR-P-A-05	PORTABLE anodised alloy 5L Carry around
15	MR-P-A-10	PORTABLE anodised alloy 10L Carry around
16	MR-P-A-20	PORTABLE anodised alloy 20L Carry around
17	MR-F-3-01	FIXED 316 1L
18	MR-F-3-02	FIXED 316 2.5L
19	MR-F-3-05	FIXED 316 5L
20	MR-F-3-4E	FIXED 316 4L ergo style
21	MR-F-3-10	FIXED 316 10L
22	MR-F-3-20	FIXED 316 20L
23	MR-F-3-50	FIXED 316 50L
24	MR-F-A-02	FIXED anodised alloy 2.5L
25	MR-F-A-05	FIXED anodised alloy 5L

IF IN DOUBT, ASK

THIRD ANGLE PROJECTION

HYDRAULIC CIRCUIT FOR MICROPAC PUMP/RESERVOIR

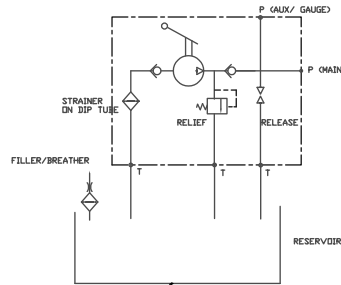


TOLERANCES UNLESS OTHERWISE STATED
 GENERAL TOLERANCES RIGHT ANGLE BENDS &
 NO DEC. PLACE +/-1.0mm OTHER ANGLES +/-1°
 ONE DEC. PLACE +/-0.3mm MACHINED DIAMETERS
 TWO DEC. PLACE +/-0.1mm CONCENTRIC WITHIN
 +/-0.1mm T.I.R.
 SCREW THREADS ARE ISO METRIC COARSE PITCH
 TOL. 6g/6H (MED. FIT) TO BS3643
 WIRE DIA./PLATE THICKNESS TO COMMERCIAL LIMITS
 GEOMETRICAL TOLERANCING TO BS308 PART 3

NOTES

1. MATERIALS STAINLES STEEL 316 1.4404
2. ORDERING CODES
 MR = MICROPAC RESERVOIR
 P= PORTABLE SERIES
- 3= 316 1.4404 STAINLESS SERIES
- 5 = 5 LITRES
3. CONSULT DATA SHEET FOR FULL DESCRIPTION
4. PUMP IS SHOWN FOR CLARITY BUT MUST BE ORDERED SEPARATELY
5. INTEGRATED PUMP/RESERVOIR TEST SETS AVAILABLE UNDER PART MP
 CONSULT DATA SHEET
6. RESERVOIRS INCLUDE FILLER/BREATHER IN POLYMER.
7. RESERVOIRS ARE NOT PRESSURE VESSELS. MAX PRESSURE 0.3 BARG
8. DIMENSIONS IN MM
9. SPECIFICATIONS MAY BE SUBJECT TO REVISION
10. MASS WITHOUT PUMP AND DRY 8KG
11. CAPACITY 5L/1.1USG
12. ATEX MODEL AVAILABLE: ADD -AX TO END OF ORDERING CODE

WARNING- FOLLOW MANUAL HANDLING GUIDELINES AND REGULATIONS



MOUNTING FACE PLAN FOR MICROPAC RESERVOIR

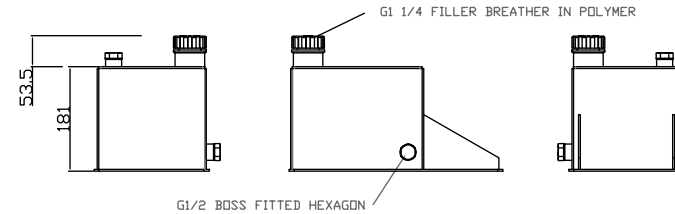
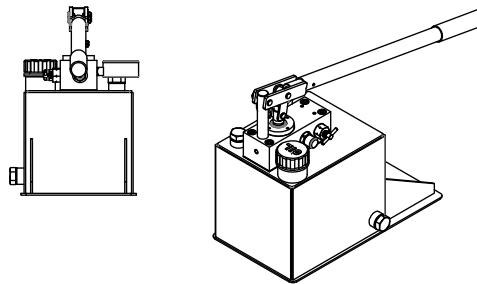
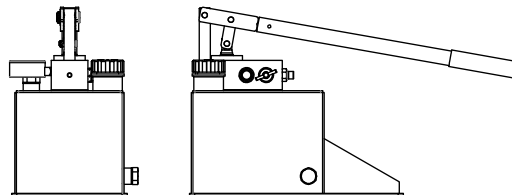
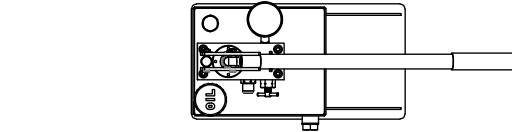
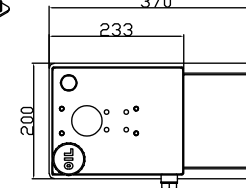
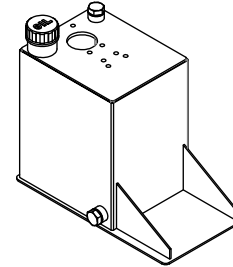
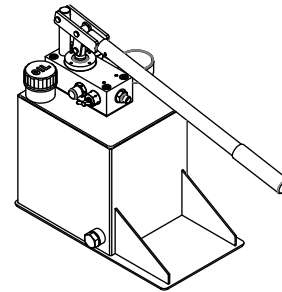
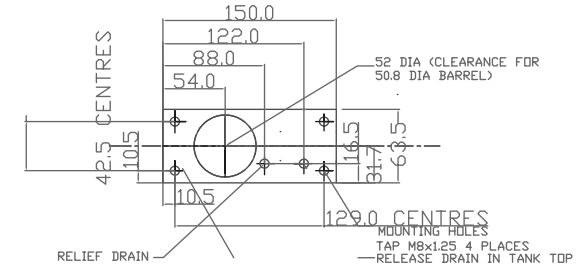


ILLUSTRATION OF MICROPAC MW PUMP MOUNTED ON RESERVOIR MR-P-3-05
 ORDER A PUMP PLUS A RESERVOIR

DIMENSIONS RESERVOIR MR-P-3-5

UNLESS OTHERWISE STATED:
 DIMENSIONS IN MILLIMETRES
 SURFACE FINISH IN MICROMETRES
 REMOVE SHARP EDGES

© COPYRIGHT 2020 SARUM HYDRAULICS LTD.



SARUM HYDRAULICS LTD.

SALISBURY, SP4 6EB, UK
 www.sarum-hydraulics.co.uk

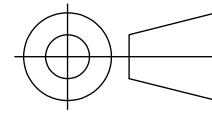
TITLE
 INSTALLATION DRAWING PUMP/5 L 316 SS PORTABLE RESERVOIR

DRAWN JF	APP
	CHKD
SCALE F SIZE	SHEET OF
CAD 2-D MR-P-3-05	
DRAWING NO.	
MR-P-3-05	

4	1905271	REDRAWN FROM MODEL	09/19
ISSUE	D.C.N.	CHANGE DESCRIPTION & DATE	DATE IMPLEMENTED

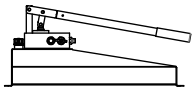
MATERIAL PER NOTE
FINISH PER NOTE

IF IN DOUBT, ASK THIRD ANGLE PROJECTION

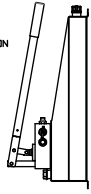


TOLERANCES UNLESS OTHERWISE STATED
 GENERAL TOLERANCES RIGHT ANGLE BENDS &
 NO DEC. PLACE +/-1.0mm OTHER ANGLES +/-1°
 ONE DEC. PLACE +/-0.3mm MACHINED DIAMETERS
 TWO DEC. PLACE +/-0.1mm CONCENTRIC WITHIN
 +/-0.1mm T.I.R.
 SCREW THREADS ARE ISO METRIC COARSE PITCH
 TOL. 6g/6H (MED. FIT) TO BS3643
 WIRE DIA./PLATE THICKNESS TO COMMERCIAL LIMITS
 GEOMETRICAL TOLERANCING TO BS308 PART 3

DEFAULT/STANDARD RESERVOIR VERTICAL. PREFERRED ORIENTATION



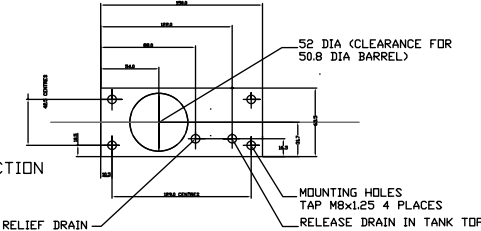
DEFAULT HORIZONTAL OPERATION



VERTICAL OPERATION REQUIRES SPECIAL RESERVOIR WITH END FILLER. CONSULT FACTORY

ILLUSTRATION OF MICRO PAC MW PUMP MOUNTED ON RESERVOIR MR-P-3-5E
 ORDER A PUMP PLUS A RESERVOIR

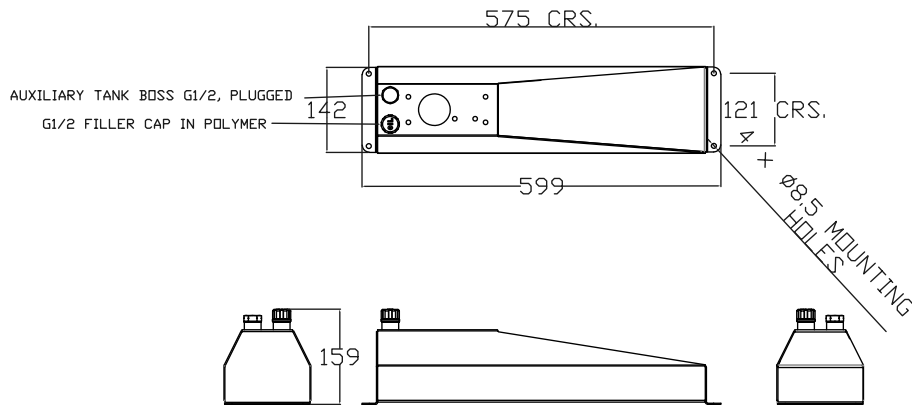
MOUNTING FACE PLAN FOR MICRO PAC RESERVOIR



NOTES

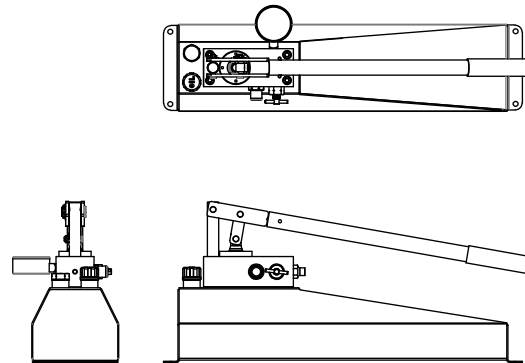
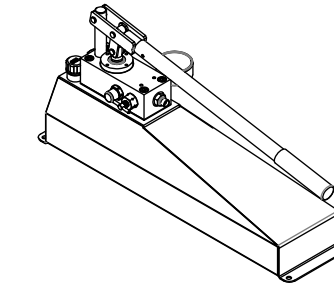
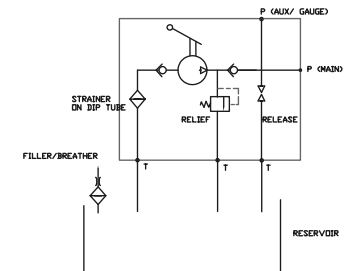
1. MATERIALS OF CONSTRUCTION
 316 STAINLESS 1.4404
 CAP POLYMER
2. ALL DIMENSIONS IN mm
3. MASS 5 KG DRY
4. USE DATA SHEET 001026300 FOR ORDERING CODES
5. ORDER PUMP AND RESERVOIR AS SEPARATE ITEMS
6. THE RESERVOIR IS NOT A PRESSURE VESSEL.
 IT MUST ALWAYS BE VENTED TO ATMOSPHERE
 MAXIMUM INTERNAL PRESSURE 0.3 BARG
7. NOMINAL CAPACITY 5 LITRES (1.3USG)
8. ATEX MODEL AVAILABLE: ADD -AX TO END OF ORDERING CODE

DIMENSIONS RESERVOIR MR-P-3-5E



UNLESS OTHERWISE STATED:
 DIMENSIONS IN MILLIMETRES
 SURFACE FINISH IN MICROMETRES
 REMOVE SHARP EDGES

HYDRAULIC CIRCUIT FOR MICRO PAC PUMP/RESERVOIR



© COPYRIGHT 2020 SARUM HYDRAULICS LTD.



SARUM HYDRAULICS LTD.

SALISBURY, SP4 6EB, UK
 www.sarum-hydraulics.co.uk

TITLE
INSTALLATION DRAWING PUMP/5 L ERGO 316 RESERVOIR
 MATERIAL PER NOTE
 FINISH PER NOTE

DRAWN JF	APP
	CHKD
SCALE F SIZE	SHEET OF
CAD 2-D MR-P-3-5E	
DRAWING NO.	
MR-P-3-5E	

ISSUE	D.C.N.	CHANGE DESCRIPTION & DATE	DATE IMPLEMENTED
3	2007301	UPGRADE TO SOLID MODEL	N.D 07/20
2	1703191	PRDND MODS	03/17
1		FIRST ISSUE	11/15

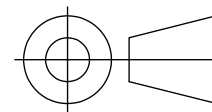
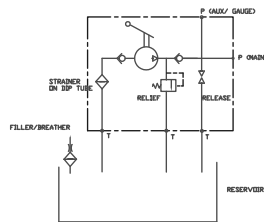
IF IN DOUBT, ASK

THIRD ANGLE PROJECTION

NOTES

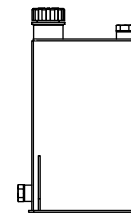
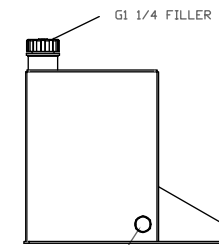
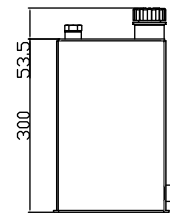
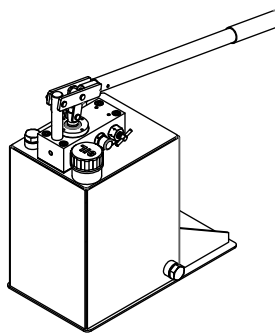
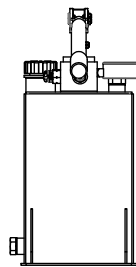
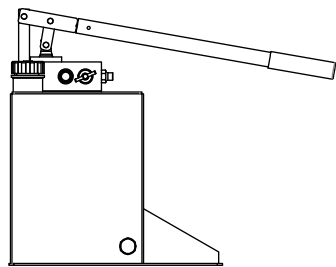
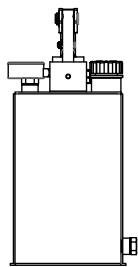
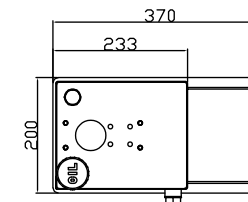
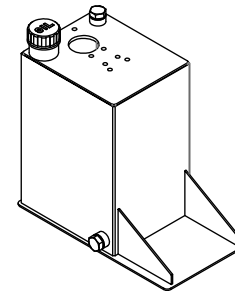
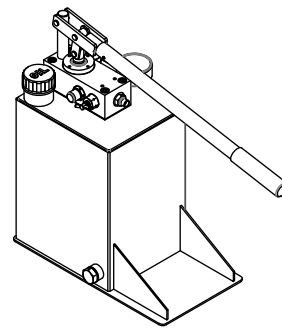
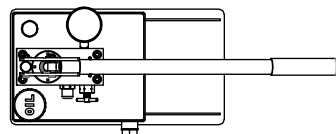
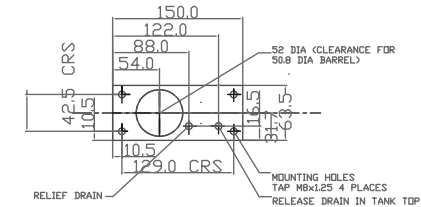
1. MATERIALS STAINLESS STEEL 316 1.4404
 2. ORDERING CODES
MR = MICROPAC RESERVOIR
P= PORTABLE SERIES
3= 316 1.4404 STAINLESS SERIES
10 = 10 LITRES
 3. CONSULT DATA SHEET FOR FULL DESCRIPTION
 4. PUMP IS SHOWN FOR CLARITY BUT MUST BE ORDERED SEPARATELY
 5. INTEGRATED PUMP/RESERVOIR TEST SETS AVAILABLE UNDER PART MP - CONSULT DATA SHEET
 6. RESERVOIRS INCLUDE FILLER/BREATHER IN POLYMER.
 7. RESERVOIRS ARE NOT PRESSURE VESSELS. MAX PRESSURE 0.3 BARG
 8. DIMENSIONS IN MM
 9. SPECIFICATIONS MAY BE SUBJECT TO REVISION
 10. MASS WITHOUT PUMP AND DRY 8KG
 11. CAPACITY 10L/2.2USG
 12. ATEX MODEL AVAILABLE: ADD -AX TO END OF ORDERING CODE
- WARNING- FOLLOW MANUAL HANDLING GUIDELINES AND REGULATIONS

HYDRAULIC CIRCUIT FOR MICROPAC PUMP/RESERVOIR



TOLERANCES UNLESS OTHERWISE STATED
 GENERAL TOLERANCES RIGHT ANGLE BENDS &
 NO DEC. PLACE +/-1.0mm OTHER ANGLES +/-1°
 ONE DEC. PLACE +/-0.3mm MACHINED DIAMETERS
 TWO DEC. PLACE +/-0.1mm CONCENTRIC WITHIN
 +/-0.1mm T.I.R.
 SCREW THREADS ARE ISO METRIC COARSE PITCH
 TOL. 6g/6H (MED. FIT) TO BS3643
 WIRE DIA./PLATE THICKNESS TO COMMERCIAL LIMITS
 GEOMETRICAL TOLERANCING TO BS308 PART 3

MOUNTING FACE PLAN FOR MICROPAC RESERVOIR



G1/2 BOSS FITTED HEXAGON

G1/4 FILLER BREATHER IN POLYMER

ILLUSTRATION OF MICROPAC MW PUMP MOUNTED ON RESERVOIR MR-P-3-120

ORDER A PUMP PLUS A RESERVOIR

DIMENSIONS RESERVOIR MR-P-3-10

UNLESS OTHERWISE STATED:
 DIMENSIONS IN MILLIMETRES
 SURFACE FINISH IN MICROMETRES
 REMOVE SHARP EDGES

© COPYRIGHT 2020 SARUM HYDRAULICS LTD.



SARUM HYDRAULICS LTD.

SALISBURY, SP4 6EB, UK
 www.sarum-hydraulics.co.uk

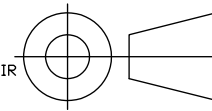
TITLE
 INSTALLATION DRAWING PUMP/10 L 316 SS PORTABLE RESERVOIR

DRAWN JF	APP
	CHKD
SCALE F SIZE	SHEET OF
CAD 2-D MR-P-3-10	
DRAWING NO.	
MR-P-3-10	

4	1905271	REDRAWN FROM MODEL	09/19	MATERIAL PER NOTE
ISSUE	D.C.N.	CHANGE DESCRIPTION & DATE	DATE IMPLEMENTED	FINISH PER NOTE

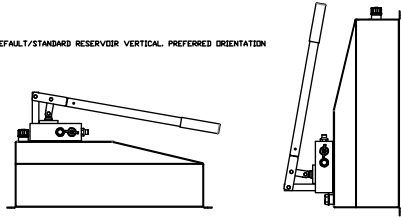
IF IN DOUBT, ASK

THIRD ANGLE PROJECTION



TOLERANCES UNLESS OTHERWISE STATED
 GENERAL TOLERANCES RIGHT ANGLE BENDS &
 NO DEC. PLACE +/-1.0mm OTHER ANGLES +/-1°
 ONE DEC. PLACE +/-0.3mm MACHINED DIAMETERS
 TWO DEC. PLACE +/-0.1mm CONCENTRIC WITHIN
 +/-0.1mm T.I.R.
 SCREW THREADS ARE ISO METRIC COARSE PITCH
 TOL. 6g/6H (MED. FIT) TO BS3643
 WIRE DIA./PLATE THICKNESS TO COMMERCIAL LIMITS
 GEOMETRICAL TOLERANCING TO BS308 PART 3

DEFAULT/STANDARD RESERVOIR VERTICAL. PREFERRED ORIENTATION



DEFAULT HORIZONTAL OPERATION

VERTICAL OPERATION REQUIRES SPECIAL RESERVOIR WITH END FILLER. CONSULT FACTORY

MOUNTING FACE PLAN FOR MICROPAC RESERVOIR

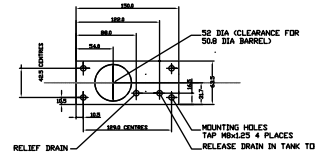
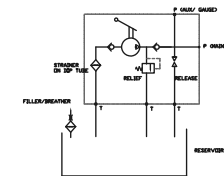


ILLUSTRATION OF MICROPAC MW PUMP MOUNTED ON RESERVOIR MR-P-3-1E
 ORDER A PUMP PLUS A RESERVOIR

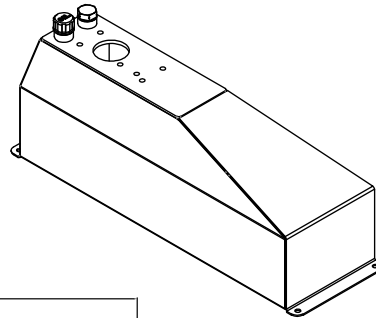
NOTES

- MATERIALS OF CONSTRUCTION
 316 STAINLESS 1.4404
 CAP POLYMER
- ALL DIMENSIONS IN mm
- MASS 8 KG DRY
- USE DATA SHEET 001026300 FOR ORDERING CODES
- ORDER PUMP AND RESERVOIR AS SEPARATE ITEMS
- THE RESERVOIR IS NOT A PRESSURE VESSEL.
 IT MUST ALWAYS BE VENTED TO ATMOSPHERE
 MAXIMUM INTERNAL PRESSURE 0.3 BARG
- NOMINAL CAPACITY 14 LITRES (3.7USG)
- ATEX MODEL AVAILABLE: ADD -AX TO END OF ORDERING CODE

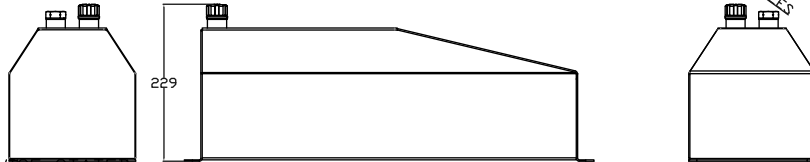
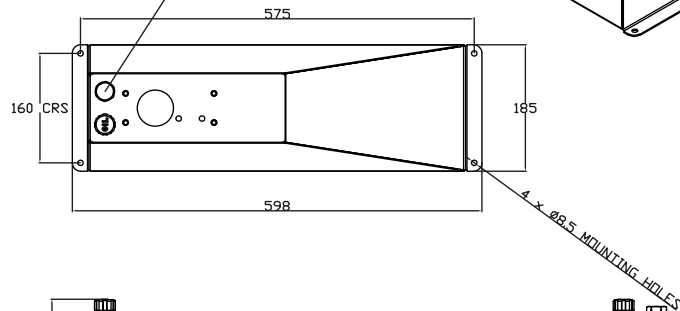
HYDRAULIC CIRCUIT FOR MICROPAC PUMP/RESERVOIR



DIMENSIONS RESERVOIR MR-P-3-1E



2 x G1/2 PORTS;
 ONE FITTED POLYMER FILLER BREATHER CAP
 ONE FITTED HEX BLANK PLUG (316) CAN BE USED AS A RETURN PORT



UNLESS OTHERWISE STATED:
 DIMENSIONS IN MILLIMETRES
 SURFACE FINISH IN MICROMETRES
 REMOVE SHARP EDGES

© COPYRIGHT 2020 SARUM HYDRAULICS LTD.



SARUM HYDRAULICS LTD.

SALISBURY, SP4 6EB, UK
 www.sarum-hydraulics.co.uk

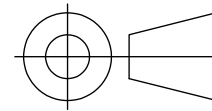
TITLE
 INSTALLATION DRAWING PUMP/14 L ERGO 316 RESERVOIR

MATERIAL PER NOTE
 FINISH PER NOTE

DRAWN JF	APP
	CHKD
SCALE F SIZE	SHEET OF
CAD 2-D MR-P-3-1E	
DRAWING NO.	
MR-P-3-1E	

ISSUE	D.C.N.	CHANGE DESCRIPTION & DATE	DATE IMPLEMENTED
5	2007301	TRANSFER TO STANDARD SHEET	N.O 07/20
4	1904291	SOLIDWORKS MODEL/CHANGE TO UNIVERSAL WRAP	N.O 10/19
3	1808012	WAS 12 LITRE	08/18
2	1802171	WAS 30 HIGHER/ 40 NARROWER	02/18
1		FIRST ISSUE	02/18

IF IN DOUBT, ASK THIRD ANGLE PROJECTION



TOLERANCES UNLESS OTHERWISE STATED
 GENERAL TOLERANCES RIGHT ANGLE BENDS &
 NO DEC. PLACE +/-1.0mm OTHER ANGLES +/-1°
 ONE DEC. PLACE +/-0.3mm MACHINED DIAMETERS
 TWO DEC. PLACE +/-0.1mm CONCENTRIC WITHIN
 +/-0.1mm T.I.R.
 SCREW THREADS ARE ISO METRIC COARSE PITCH
 TOL. 6g/6H (MED. FIT) TO BS3643
 WIRE DIA./PLATE THICKNESS TO COMMERCIAL LIMITS
 GEOMETRICAL TOLERANCING TO BS308 PART 3

- NOTES
1. MATERIALS STAINLES STEEL 316 1.4404
 2. ORDERING CODES
 MR = MICRODAC RESERVOIR
 P= PORTABLE SERIES
 - 3= 316 1.4404 STAINLESS SERIES
 - 20 = 20 LITRES
 3. CONSULT DATA SHEET FOR FULL DESCRIPTION
 4. PUMP IS SHOWN FOR CLARITY BUT MUST BE ORDERED SEPARATELY
 5. INTEGRATED PUMP/RESERVOIR TEST SETS AVAILABLE UNDER PART MP- CONSULT DATA SHEET
 6. RESERVOIRS INCLUDE FILLER/BREATHER IN POLYMER.
 7. RESERVOIRS ARE NOT PRESSURE VESSELS. MAX PRESSURE 0.3 BARG
 8. DIMENSIONS IN MM
 9. SPECIFICATIONS MAY BE SUBJECT TO REVISION
 10. MASS WITHOUT PUMP AND DRY 12KG
 11. CAPACITY 20L/4.4USG
 12. ATEX MODEL AVAILABLE: ADD -AX TO END OF ORDERING CODE
 WARNING- FOLLOW MANUAL HANDLING GUIDELINES AND REGULATIONS

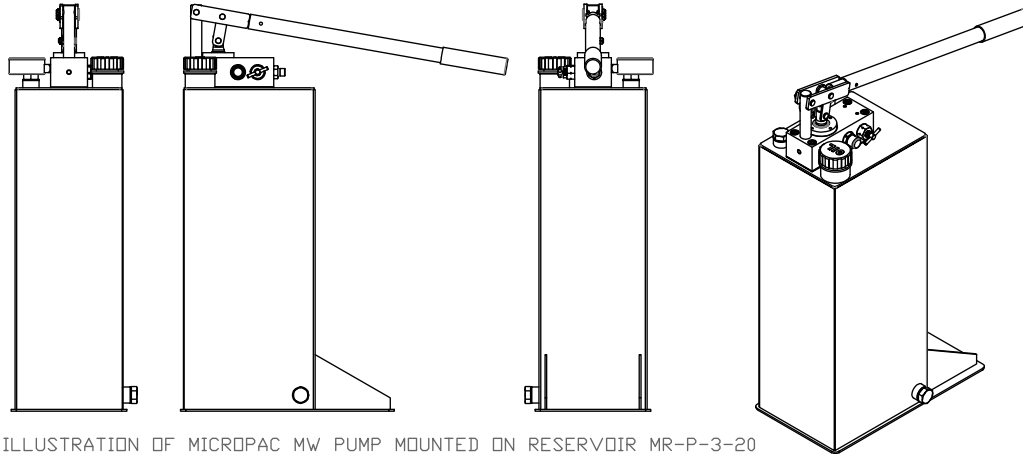
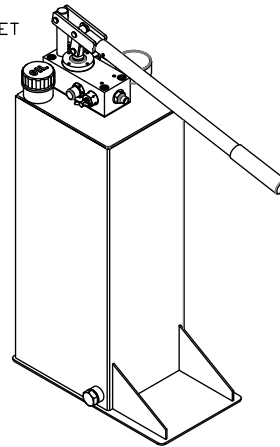
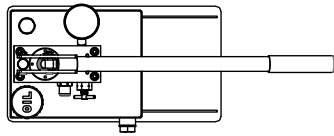
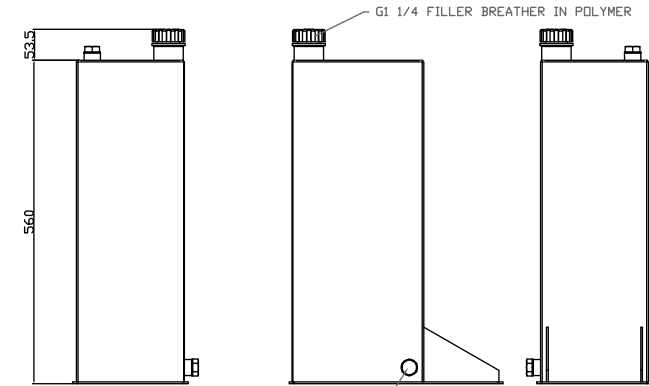
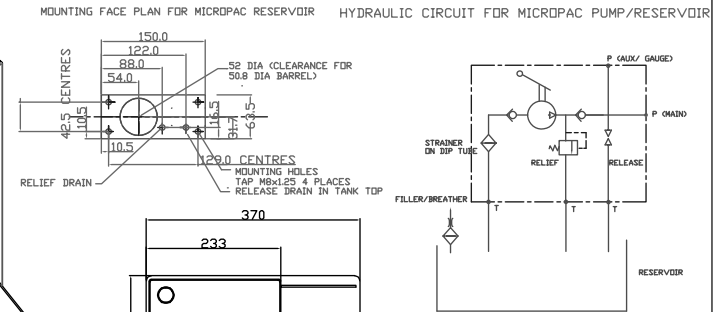
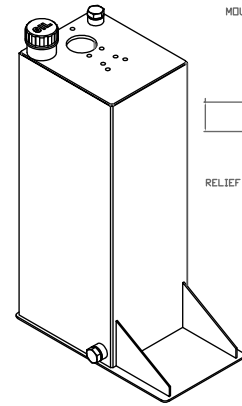


ILLUSTRATION OF MICRODAC MW PUMP MOUNTED ON RESERVOIR MR-P-3-20
 ORDER A PUMP PLUS A RESERVOIR



DIMENSIONS RESERVOIR MR-P-3-20

UNLESS OTHERWISE STATED:
 DIMENSIONS IN MILLIMETRES
 SURFACE FINISH IN MICROMETRES
 REMOVE SHARP EDGES

© COPYRIGHT 2020 SARUM HYDRAULICS LTD.



SARUM HYDRAULICS LTD.

SALISBURY, SP4 6EB, UK
 www.sarum-hydraulics.co.uk

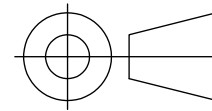
TITLE
 INSTALLATION DRAWING PUMP/20 L 316 SS PORTABLE RESERVOIR

DRAWN JF	APP
	CHKD
SCALE F SIZE	SHEET OF
CAD 2-D MR-P-3-20	
DRAWING NO.	
MR-P-3-20	

4	1905271	REDRAWN FROM MODEL	09/19	MATERIAL PER NOTE
ISSUE	D.C.N.	CHANGE DESCRIPTION & DATE	DATE IMPLEMENTED	FINISH PER NOTE

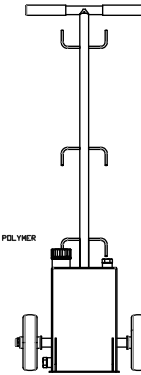
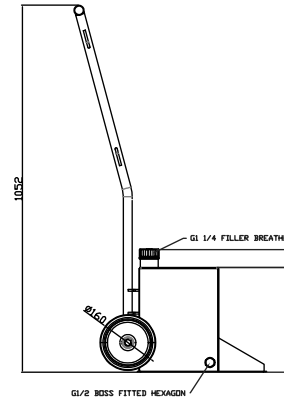
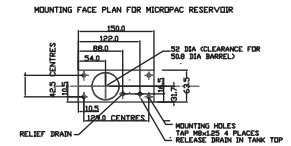
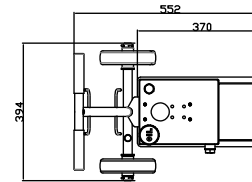
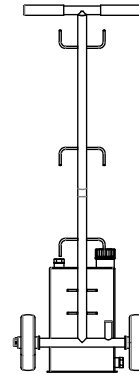
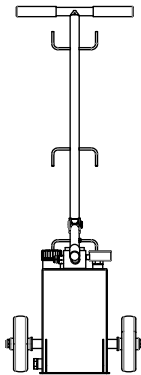
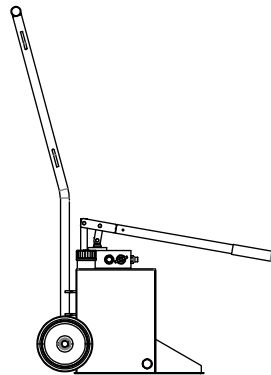
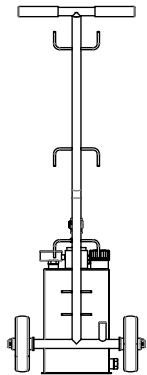
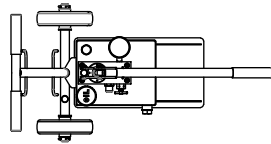
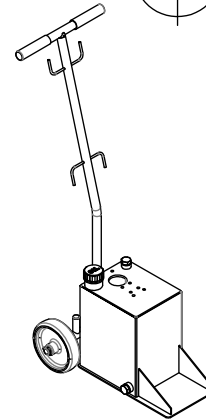
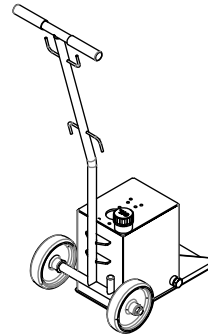
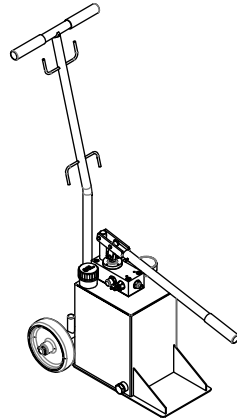
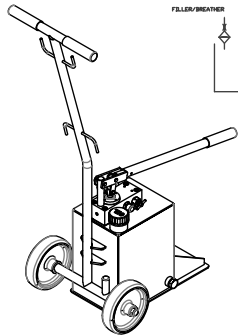
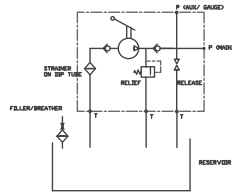
IF IN DOUBT, ASK

THIRD ANGLE PROJECTION



TOLERANCES UNLESS OTHERWISE STATED
 GENERAL TOLERANCES RIGHT ANGLE BENDS &
 NO DEC. PLACE +/-1.0mm OTHER ANGLES +/-1°
 ONE DEC. PLACE +/-0.3mm MACHINED DIAMETERS
 TWO DEC. PLACE +/-0.1mm CONCENTRIC WITHIN
 +/-0.1mm T.I.R.
 SCREW THREADS ARE ISO METRIC COARSE PITCH
 TOL. 6g/6H (MED. FIT) TO BS3643
 WIRE DIA./PLATE THICKNESS TO COMMERCIAL LIMITS
 GEOMETRICAL TOLERANCING TO BS308 PART 3

HYDRAULIC CIRCUIT FOR MICROPAC PUMP/RESERVOIR



UNLESS OTHERWISE STATED:
 DIMENSIONS IN MILLIMETRES
 SURFACE FINISH IN MICROMETRES
 REMOVE SHARP EDGES

ILLUSTRATION OF MICROPAC MW PUMP MOUNTED ON RESERVOIR MR-P-3-1T
 ORDER A PUMP PLUS A RESERVOIR

DIMENSIONS RESERVOIR MR-P-3-1T

© COPYRIGHT 2020 SARUM HYDRAULICS LTD.



SARUM HYDRAULICS LTD.

SALISBURY, SP4 6EB, UK
 www.sarum-hydraulics.co.uk

DRAWN	JF	APP
		CHKD
SCALE	F	SIZE
CAD	2-D	MR-P-3-1T

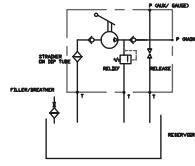
TITLE	INSTALLATION DRAWING PUMP/10 L 316 SS PORTABLE RESERVOIR/TROLLEY
MATERIAL	PER NOTE
FINISH	PER NOTE

DRAWING NO.
MR-P-3-1T

ISSUE	D.C.N.	CHANGE DESCRIPTION & DATE	DATE IMPLEMENTED
3	2008011	REDRAWN FROM MODEL	08/20
2	1804082	TROLLEY WAS 351MM WIDE	04/18
1		FIRST ISSUE	09/14

IF IN DOUBT, ASK THIRD ANGLE PROJECTION

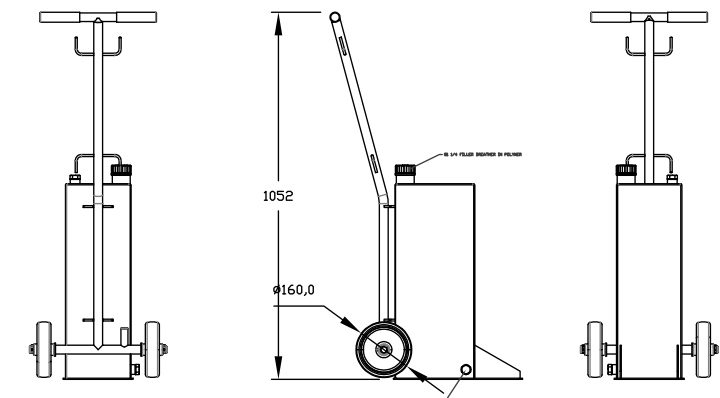
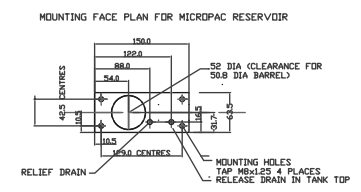
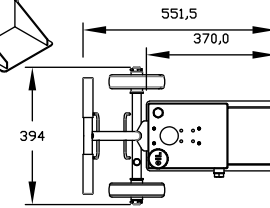
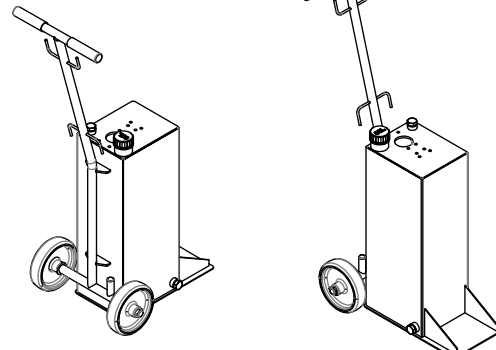
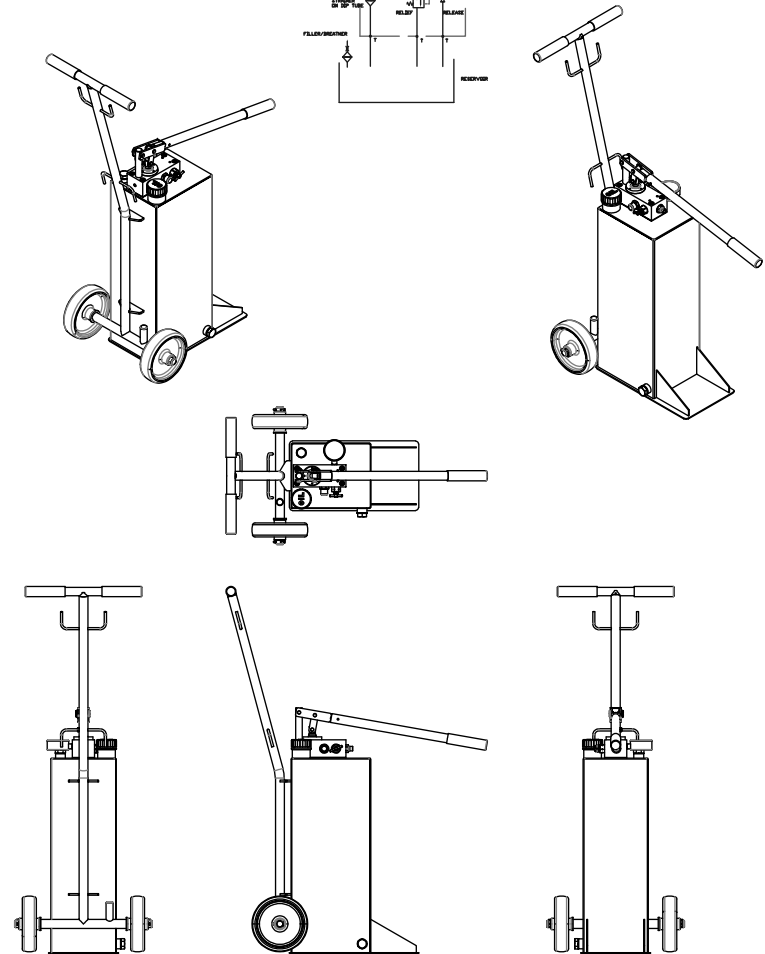
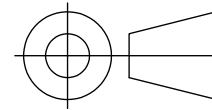
HYDRAULIC CIRCUIT FOR MICROPAC PUMP/RESERVOIR



TOLERANCES UNLESS OTHERWISE STATED
 GENERAL TOLERANCES RIGHT ANGLE BENDS &
 NO DEC. PLACE +/-1.0mm OTHER ANGLES +/-1°
 ONE DEC. PLACE +/-0.3mm MACHINED DIAMETERS
 TWO DEC. PLACE +/-0.1mm CONCENTRIC WITHIN
 +/-0.1mm T.I.R.
 SCREW THREADS ARE ISO METRIC COARSE PITCH
 TOL. 6g/6H (MED. FIT) TO BS3643
 WIRE DIA./PLATE THICKNESS TO COMMERCIAL LIMITS
 GEOMETRICAL TOLERANCING TO BS308 PART 3

NOTES

1. MATERIALS STAINLESS STEEL 316 1.4404
 2. ORDERING CODES
 - MR = MICROPAC RESERVOIR
 - P = PORTABLE SERIES
 - 3 = 316 1.4404 STAINLESS SERIES
 - 2T = 20 LITRES WITH INTEGRAL 2 WHEEL TROLLEY + HOSE STORAGE
 3. CONSULT DATA SHEET FOR FULL DESCRIPTION
 4. PUMP IS SHOWN FOR CLARITY BUT MUST BE ORDERED SEPARATELY
 5. INTEGRATED PUMP/RESERVOIR TEST SETS AVAILABLE UNDER PART MP- CONSULT DATA SHEET
 6. RESERVOIRS INCLUDE FILLER/BREATHER IN POLYMER.
 7. RESERVOIRS ARE NOT PRESSURE VESSELS. MAX PRESSURE 0.3 BARG
 8. DIMENSIONS IN MM
 9. SPECIFICATIONS MAY BE SUBJECT TO REVISION
 10. MASS WITHOUT PUMP AND DRY 15KG
 11. CAPACITY 20L/4.4USG
 12. ATEX MODEL AVAILABLE! ADD -AX TO END OF ORDERING CODE
- WARNING- FOLLOW MANUAL HANDLING GUIDELINES AND REGULATIONS



UNLESS OTHERWISE STATED:
 DIMENSIONS IN MILLIMETRES
 SURFACE FINISH IN MICROMETRES
 REMOVE SHARP EDGES

ILLUSTRATION OF MICROPAC MW PUMP MOUNTED ON RESERVOIR MR-P-3-2T
 ORDER A PUMP PLUS A RESERVOIR

DIMENSIONS RESERVOIR MR-P-3-2T

© COPYRIGHT 2020 SARUM HYDRAULICS LTD.



SARUM HYDRAULICS LTD.
 SALISBURY, SP4 6EB, UK
 www.sarum-hydraulics.co.uk

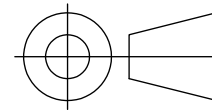
DRAWN	JF	APP
		CHKD
SCALE	F	SIZE SHEET OF
CAD	2-D	MR-P-3-2T
DRAWING NO.	MR-P-3-2T	

2	2007273	REDRAWN FROM MODEL	07/20
1		FIRST ISSUE	09/19
ISSUE	D.C.N.	CHANGE DESCRIPTION & DATE	DATE IMPLEMENTED

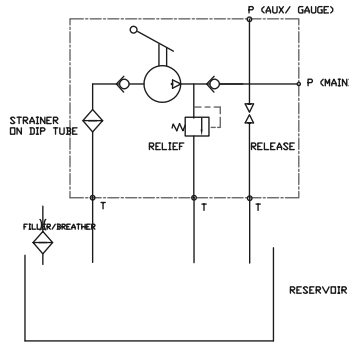
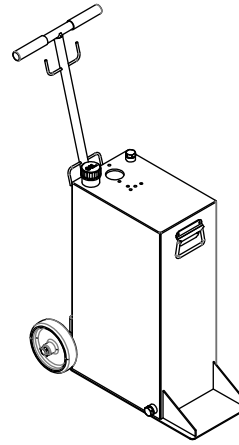
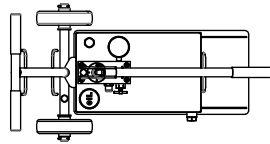
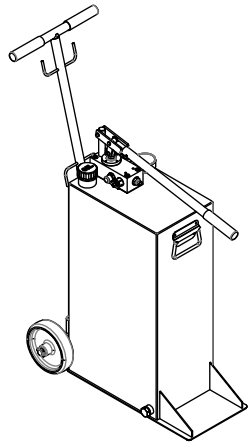
TITLE
 INSTALLATION DRAWING PUMP/20 L 316 SS PORTABLE RESERVOIR/TROLLEY
 MATERIAL PER NOTE
 FINISH PER NOTE

IF IN DOUBT, ASK THIRD ANGLE PROJECTION

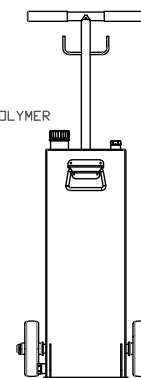
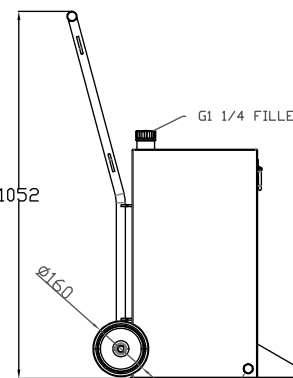
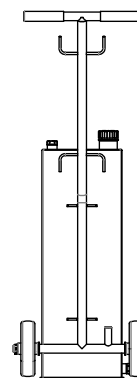
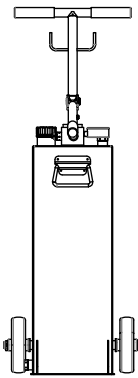
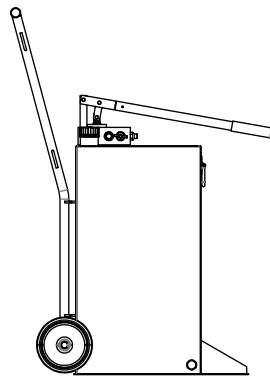
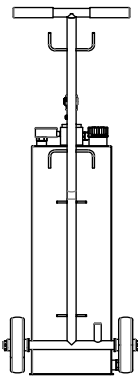
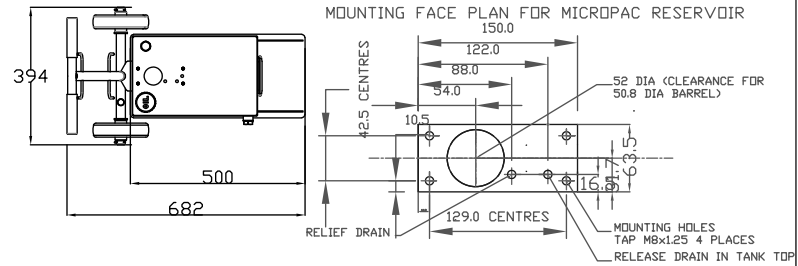
HYDRAULIC CIRCUIT FOR MICROPAC PUMP/RESERVOIR



TOLERANCES UNLESS OTHERWISE STATED
 GENERAL TOLERANCES RIGHT ANGLE BENDS &
 NO DEC. PLACE +/-1.0mm OTHER ANGLES +/-1°
 ONE DEC. PLACE +/-0.3mm MACHINED DIAMETERS
 TWO DEC. PLACE +/-0.1mm CONCENTRIC WITHIN
 +/-0.1mm T.I.R.
 SCREW THREADS ARE ISO METRIC COARSE PITCH
 TOL. 6g/6H (MED. FIT) TO BS3643
 WIRE DIA./PLATE THICKNESS TO COMMERCIAL LIMITS
 GEOMETRICAL TOLERANCING TO BS308 PART 3



- NOTES
1. MATERIALS STAINLESS STEEL 316 1.4404
 2. ORDERING CODES
 MR = MICROPAC RESERVOIR
 P= PORTABLE SERIES
 3= 316 1.4404 STAINLESS SERIES
 5T = 50 LITRES WITH INTEGRAL 2 WHEEL TROLLEY + HOSE STOWAGE
 3. CONSULT DATA SHEET FOR FULL DESCRIPTION
 4. PUMP IS SHOWN FOR CLARITY BUT MUST BE ORDERED SEPARATELY
 5. INTEGRATED PUMP/RESERVOIR TEST SETS AVAILABLE UNDER PART MP- CONSULT DATA SHEET
 6. RESERVOIRS INCLUDE FILLER/BREATHER IN POLYMER
 7. RESERVOIRS ARE NOT PRESSURE VESSELS. MAX PRESSURE 0.3 BARG
 8. DIMENSIONS IN MM
 9. SPECIFICATIONS MAY BE SUBJECT TO REVISION
 10. MASS WITHOUT PUMP AND DRY 22KG
 11. CAPACITY 50L/11USG
 12. ATEX MODEL AVAILABLE; ADD -AX TO END OF ORDERING CODE
 WARNING- FOLLOW MANUAL HANDLING GUIDELINES AND REGULATIONS



DIMENSIONS RESERVOIR MR-P-3-2T

UNLESS OTHERWISE STATED:
 DIMENSIONS IN MILLIMETRES
 SURFACE FINISH IN MICROMETRES
 REMOVE SHARP EDGES

ILLUSTRATION OF MICROPAC MW PUMP MOUNTED ON RESERVOIR MR-P-3-2T
 ORDER A PUMP PLUS A RESERVOIR

© COPYRIGHT 2020 SARUM HYDRAULICS LTD.



SARUM HYDRAULICS LTD.

SALISBURY, SP4 6EB, UK
 www.sarum-hydraulics.co.uk

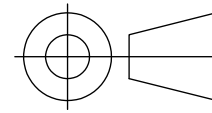
TITLE
 INSTALLATION DRAWING PUMP/50 L 316 SS PORTABLE RESERVOIR/TROLLEY

MATERIAL PER NOTE
 FINISH PER NOTE

DRAWN JF	APP
	CHKD
SCALE F SIZE	SHEET OF
CAD 2-D MR-P-3-5T	
DRAWING NO.	
MR-P-3-5T	

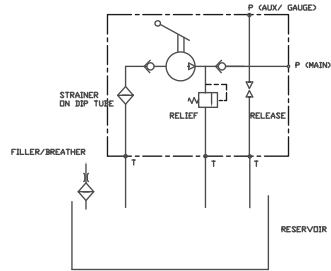
2	2007273	REDRAWN FROM MODEL	07/20
1		FIRST ISSUE	09/19
ISSUE	D.C.N.	CHANGE DESCRIPTION & DATE	DATE IMPLEMENTED

IF IN DOUBT, ASK THIRD ANGLE PROJECTION

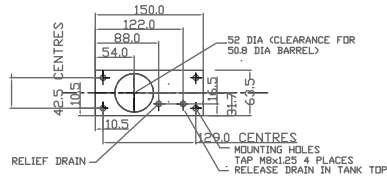


TOLERANCES UNLESS OTHERWISE STATED
 GENERAL TOLERANCES RIGHT ANGLE BENDS &
 NO DEC. PLACE +/-1.0mm OTHER ANGLES +/-1°
 ONE DEC. PLACE +/-0.3mm MACHINED DIAMETERS
 TWO DEC. PLACE +/-0.1mm CONCENTRIC WITHIN
 +/-0.1mm T.I.R.
 SCREW THREADS ARE ISO METRIC COARSE PITCH
 TOL. 6g/6H (MED. FIT) TO BS3643
 WIRE DIA./PLATE THICKNESS TO COMMERCIAL LIMITS
 GEOMETRICAL TOLERANCING TO BS308 PART 3

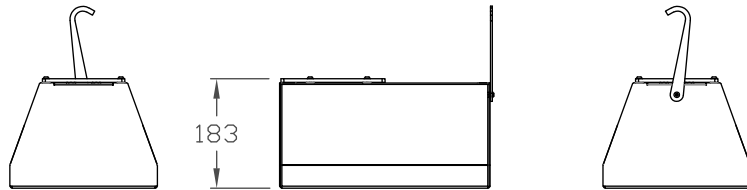
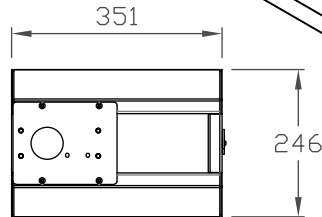
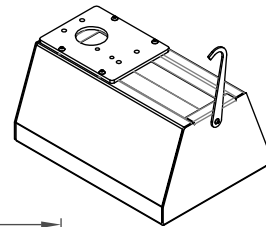
HYDRAULIC CIRCUIT FOR MICRODAC PUMP/RESERVOIR



MOUNTING FACE PLAN FOR MICRODAC RESERVOIR



DIMENSIONS RESERVOIR MR-P-3-TR

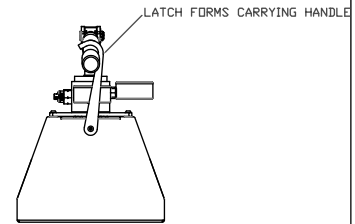
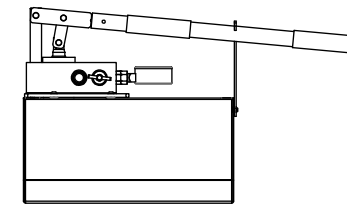
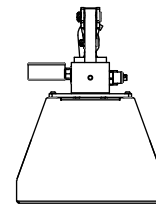
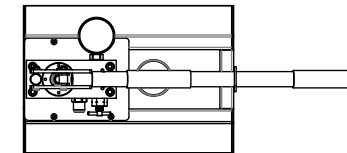
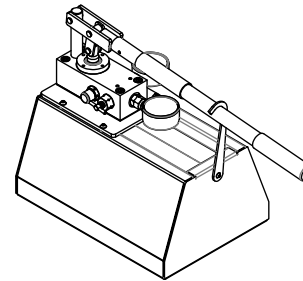


UNLESS OTHERWISE STATED:
 DIMENSIONS IN MILLIMETRES
 SURFACE FINISH IN MICROMETRES
 REMOVE SHARP EDGES

ILLUSTRATION OF MICRODAC MW PUMP MOUNTED ON RESERVOIR MR-P-3-TR
 ORDER A PUMP PLUS A RESERVOIR

NOTES

1. MATERIALS OF CONSTRUCTION
316 STAINLESS 1.4404
2. ALL DIMENSIONS IN mm
3. MASS 4 KG DRY
4. USE DATA SHEET 001026300 FOR ORDERING CODES
5. ORDER PUMP AND RESERVOIR AS SEPARATE ITEMS
6. THE RESERVOIR IS OPEN TO ATMOSPHERE.
7. NOMINAL CAPACITY 8 LITRES (1.7USG)



© COPYRIGHT 2020 SARUM HYDRAULICS LTD.



SARUM HYDRAULICS LTD.

SALISBURY, SP4 6EB, UK
 www.sarum-hydraulics.co.uk

TITLE
 INSTALLATION DRAWING PUMP/8 L TROUGH 316 RESERVOIR

DRAWN JF	APP
	CHKD
SCALE F SIZE	SHEET OF
CAD 2-D MR-P-3-TR	
DRAWING NO.	
MR-P-3-TR	

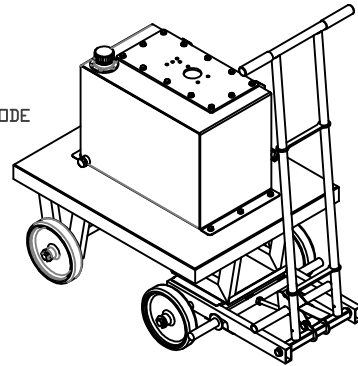
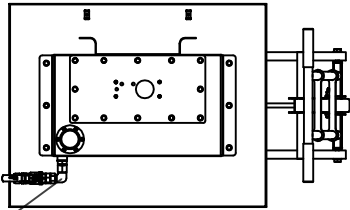
1	FIRST ISSUE	NO 07/20
ISSUE	D.C.N.	CHANGE DESCRIPTION & DATE
		DATE IMPLEMENTED

MATERIAL PER NOTE
 FINISH PER NOTE

IF IN DOUBT, ASK THIRD ANGLE PROJECTION

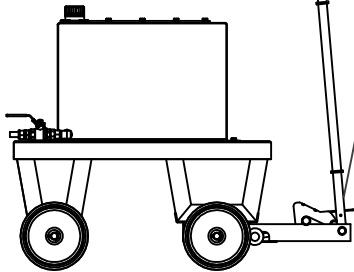
NOTES

- MATERIALS OF CONSTRUCTION
316 STAINLESS 1.4404
POLYMER CAP/FILLER MESH
POLYPROPYLENE/RUBBER WHEELS
PVC HANDLE GRIPS
- ALL DIMENSIONS IN mm
- MASS 62 KG DRY
- USE DATA SHEET 001026300 FOR ALTERNATIVE 'MR' SERIES RESERVOIRS
USE DATA SHEET 485004800 FOR 'MY' SERIES FOUR-WHEEL TURNTABLE TROLLEYS
- THIS PRODUCT IS A TROLLEY, PLUS A RESERVOIR
ORDER PUMP AS SEPARATE ITEM
- MEMO- RESERVOIR ALONE IS MR-F-3-50
FOUR-WHEEL TROLLEY ALONE IS MY-0806-316-PR
- THE RESERVOIR IS NOT A PRESSURE VESSEL.
IT MUST ALWAYS BE VENTED TO ATMOSPHERE
MAXIMUM INTERNAL PRESSURE 0.3 BARG
- NOMINAL CAPACITY 50 LITRES (13.2USG)
- ATEX MODEL AVAILABLE: ADD -AX TO END OF ORDERING CODE
- HAND MANEUVERED ONLY, NOT SUITABLE FOR TOWING

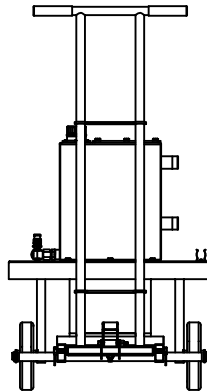


DRAIN KIT VALVE AVAILABLE
(REQUEST AT TIME OF ORDER)
ORDER AS PART NUMBER 001073700
G1/2 BLANKED AS STANDARD

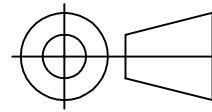
DETACHABLE TROLLEY HANDLE
FOR SHIPPING PURPOSES



FOOT BRAKE PEDAL RELEASE
HANDLE IN UPRIGHT POSITION
ENGAGES BRAKE
RELEASE LATCH AND PULL
HANDLE TO RELEASE AND
FREE WHEEL



UNLESS OTHERWISE STATED:
DIMENSIONS IN MILLIMETRES
SURFACE FINISH IN MICROMETRES
REMOVE SHARP EDGES



HYDRAULIC CIRCUIT FOR MICROPAC PUMP/RESERVOIR

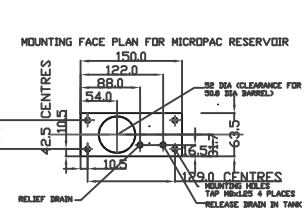
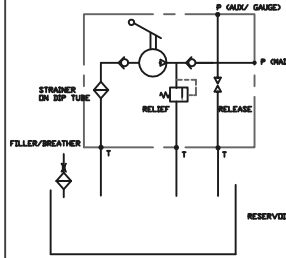
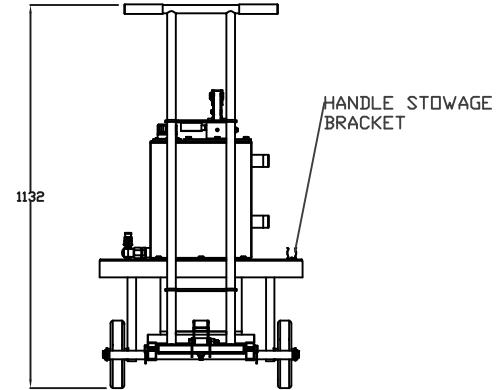
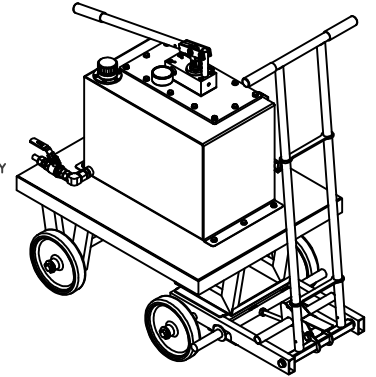
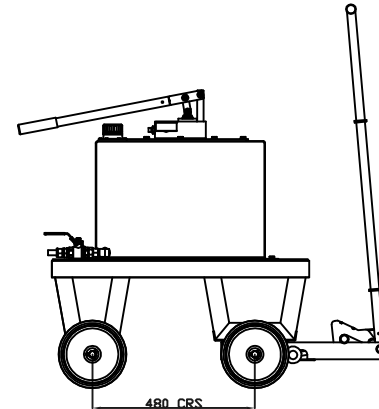
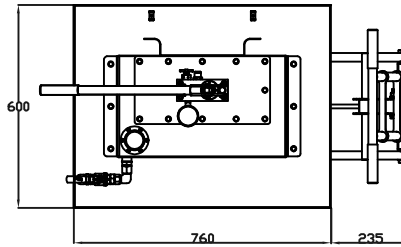


ILLUSTRATION OF MICROPAC MW PUMP MOUNTED ON 50 L RESERVOIR / 4 WHEEL 316 TROLLEY
AS P/N MR-P-3-5M FOR ASSEMBLY LESS HAND PUMP



TOLERANCES UNLESS OTHERWISE STATED
GENERAL TOLERANCES RIGHT ANGLE BENDS &
NO DEC. PLACE +/-1.0mm OTHER ANGLES +/-1°
ONE DEC. PLACE +/-0.3mm MACHINED DIAMETERS
TWO DEC. PLACE +/-0.1mm CONCENTRIC WITHIN
+/-0.1mm T.I.R.
SCREW THREADS ARE ISO METRIC COARSE PITCH
TOL. 6g/6h (MED. FIT) TO BS3643
WIRE DIA./PLATE THICKNESS TO COMMERCIAL LIMITS
GEOMETRICAL TOLERANCING TO BS308 PART 3

© COPYRIGHT 2020 SARUM HYDRAULICS LTD.



SARUM HYDRAULICS LTD.

SALISBURY, SP4 6EB, UK
www.sarum-hydraulics.co.uk

TITLE

INSTALLATION DRAWING PUMP/50 L 316 RESERVOIR/TROLLEY

MATERIAL PER NOTE

FINISH PER NOTE

DRAWN N.O APP

CHKD

SCALE F SIZE SHEET OF

CAD 2-D MR-P-3-5M

DRAWING NO.

MR-P-3-5M

2 2310302 FOOT PEDAL+REMOVABLE HANDLE N.O 10/23

1 FIRST ISSUE 07/20

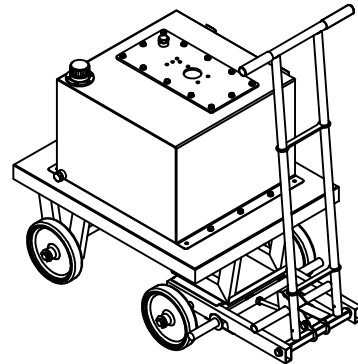
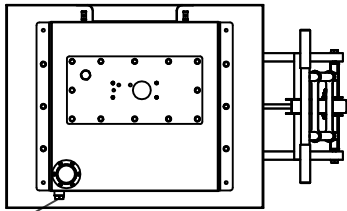
ISSUE D.C.N. CHANGE DESCRIPTION & DATE

DATE IMPLEMENTED

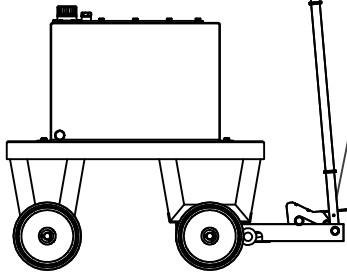
IF IN DOUBT, ASK THIRD ANGLE PROJECTION

NOTES

- MATERIALS OF CONSTRUCTION
316 STAINLESS 1.4404
POLYMER CAP/FILLER MESH
POLYPROPYLENE/RUBBER WHEELS
PVC HANDLE GRIPS
- ALL DIMENSIONS IN mm
- MASS 68 KG DRY
- USE DATA SHEET 001026300 FOR ALTERNATIVE 'MR' SERIES RESERVOIRS
USE DATA SHEET 485004800 FOR 'MY' SERIES FOUR-WHEEL TURNTABLE TROLLEYS
- THIS PRODUCT IS A TROLLEY, PLUS A RESERVOIR
ORDER PUMP AS SEPARATE ITEM
- MEMO- RESERVOIR ALONE IS MR-F-3-75
FOUR-WHEEL TROLLEY ALONE IS MY-0806-316-PR
- THE RESERVOIR IS NOT A PRESSURE VESSEL.
IT MUST ALWAYS BE VENTED TO ATMOSPHERE
MAXIMUM INTERNAL PRESSURE 0.3 BARG
- NOMINAL CAPACITY 75 LITRES (19.8USG)
- HAND MANEUVERED ONLY, NOT SUITABLE FOR TOWING

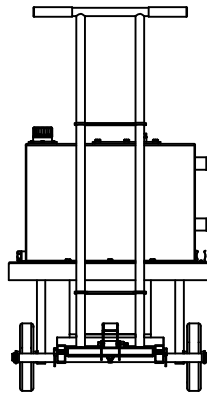


BRAIN KIT VALVE AVAILABLE
(REQUEST AT TIME OF ORDER)
ORDER AS PART NUMBER 001073700
G1/2 BLANKED AS STANDARD

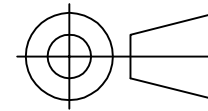


DETACHABLE TROLLEY HANDLE
FOR SHIPPING PURPOSES

FOOT BRAKE PEDAL RELEASE
HANDLE IN UPRIGHT POSITION
ENGAGES BRAKE
RELEASE LATCH AND PULL
HANDLE TO RELEASE AND
FREE WHEEL



UNLESS OTHERWISE STATED:
DIMENSIONS IN MILLIMETRES
SURFACE FINISH IN MICROMETRES
REMOVE SHARP EDGES



HYDRAULIC CIRCUIT FOR MICROPAC PUMP/RESERVOIR

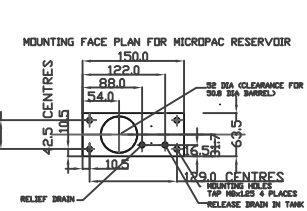
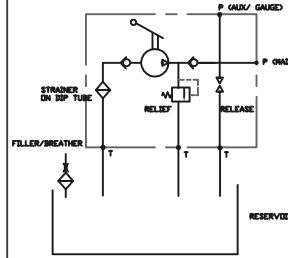
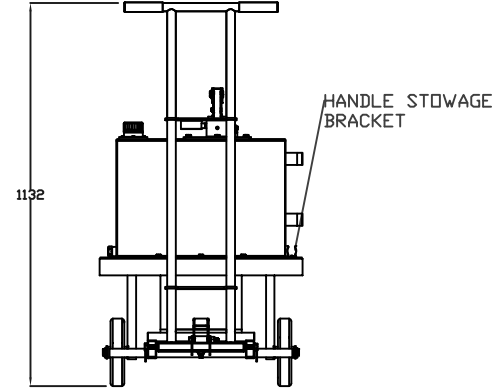
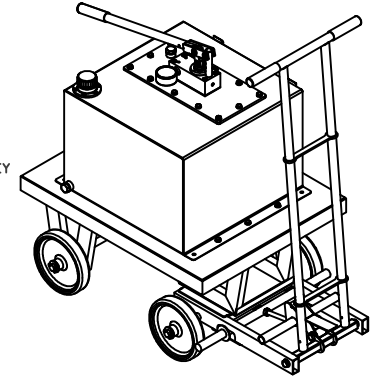
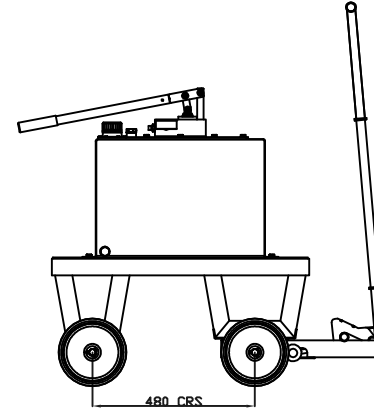
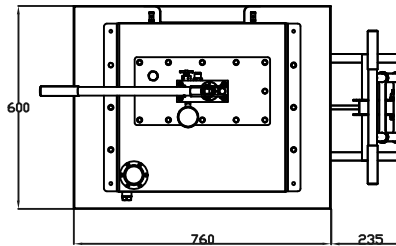


ILLUSTRATION OF MICROPAC MW PUMP MOUNTED ON 50 L RESERVOIR / 4 WHEEL 316 TROLLEY
AS P/N MR-P-3-5M FOR ASSEMBLY LESS HAND PUMP



TOLERANCES UNLESS OTHERWISE STATED
GENERAL TOLERANCES RIGHT ANGLE BENDS &
NO DEC. PLACE +/-1.0mm OTHER ANGLES +/-1°
ONE DEC. PLACE +/-0.3mm MACHINED DIAMETERS
TWO DEC. PLACE +/-0.1mm CONCENTRIC WITHIN
+/-0.1mm T.I.R.
SCREW THREADS ARE ISO METRIC COARSE PITCH
TOL. 6g/6h (MED. FIT) TO BS3643
WIRE DIA./PLATE THICKNESS TO COMMERCIAL LIMITS
GEOMETRICAL TOLERANCING TO BS308 PART 3

© COPYRIGHT 2023 SARUM HYDRAULICS LTD.



SARUM HYDRAULICS LTD.

SALISBURY, SP4 6EB, UK
www.sarum-hydraulics.co.uk

TITLE

INSTALLATION DRAWING PUMP/75 L 316 RESERVOIR/TROLLEY

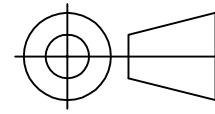
MATERIAL PER NOTE

FINISH PER NOTE

DRAWN N.O	APP
	CHKD
SCALE F SIZE	SHEET OF
CAD 2-D MR-P-3-7M	
DRAWING NO.	
MR-P-3-7M	

2	2310302	FOOT PEDAL+REMOVABLE HANDLE	N.O 10/23
1		FIRST ISSUE	07/23
ISSUE	D.C.N.	CHANGE DESCRIPTION & DATE	DATE IMPLEMENTED

IF IN DOUBT, ASK THIRD ANGLE PROJECTION

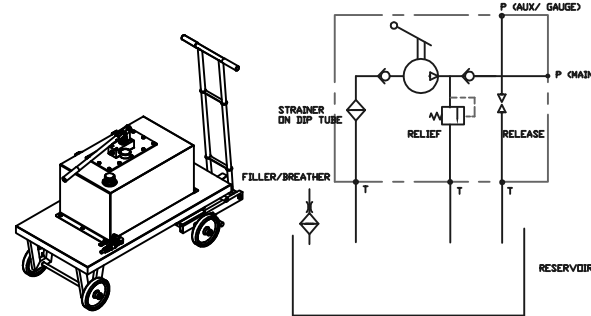


TOLERANCES UNLESS OTHERWISE STATED
 GENERAL TOLERANCES RIGHT ANGLE BENDS &
 NO DEC. PLACE +/-1.0mm OTHER ANGLES +/-1°
 ONE DEC. PLACE +/-0.3mm MACHINED DIAMETERS
 TWO DEC. PLACE +/-0.1mm CONCENTRIC WITHIN
 +/-0.1mm T.I.R.
 SCREW THREADS ARE ISO METRIC COARSE PITCH
 TOL. 6g/6h (MED. FIT) TO BS3643
 WIRE DIA./PLATE THICKNESS TO COMMERCIAL LIMITS
 GEOMETRICAL TOLERANCING TO BS308 PART 3

NOTES

- MATERIALS OF CONSTRUCTION
 316 STAINLESS 1.4404
 POLYMER CAP/FILLER MESH
 POLYPROPYLENE/RUBBER WHEELS
 PVC HANDLE GRIPS
- ALL DIMENSIONS IN mm
- MASS 83 KG DRY
- USE DATA SHEET 001026300 FOR ALTERNATIVE 'MR' SERIES RESERVOIRS
 USE DATA SHEET 485004800 FOR 'MY' SERIES FOUR-WHEEL TURNTABLE TROLLEYS
- THIS PRODUCT IS A TROLLEY, PLUS A RESERVOIR
 ORDER PUMP AS SEPARATE ITEM
- MEMO- RESERVOIR ALONE IS MR-F-3-100
 FOUR-WHEEL TROLLEY ALONE IS MY-1206-316-PR
- THE RESERVOIR IS NOT A PRESSURE VESSEL.
 IT MUST ALWAYS BE VENTED TO ATMOSPHERE
 MAXIMUM INTERNAL PRESSURE 0.3 BARG
- NOMINAL CAPACITY 100 LITRES (26.4USG)
- CONSULT FACTORY FOR ATEX/IECEx MODEL AVAILABILITY
- HAND MANEUVERED ONLY, NOT SUITABLE FOR TOWING

HYDRAULIC CIRCUIT FOR MICRO PAC PUMP/RESERVOIR



MOUNTING FACE PLAN FOR MICRO PAC RESERVOIR

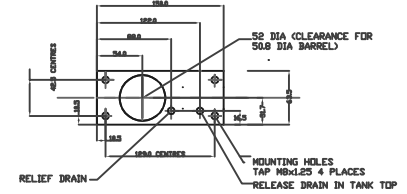
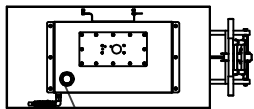
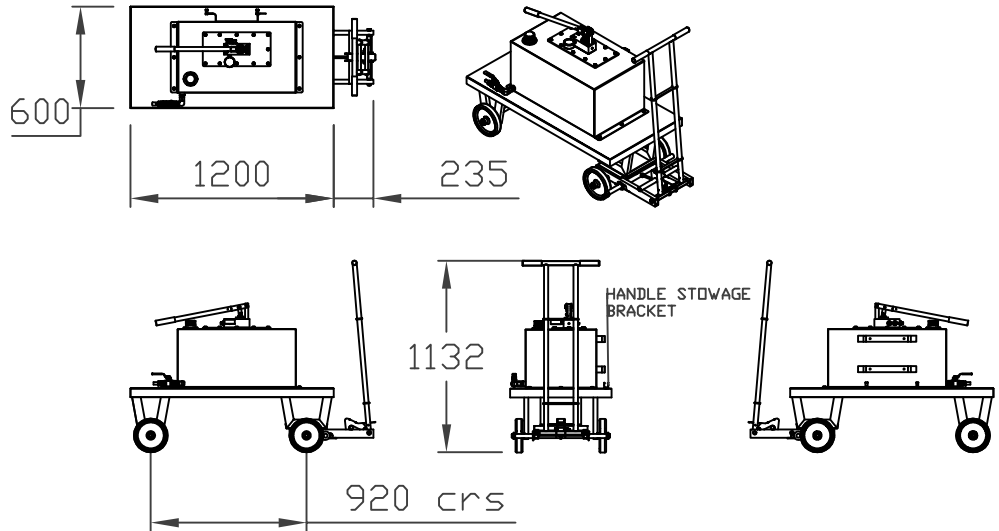
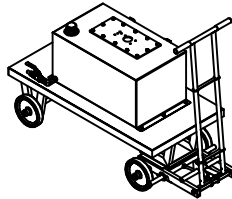


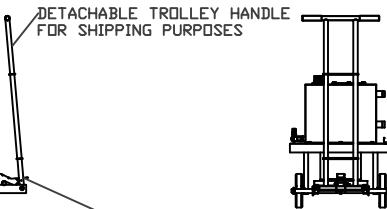
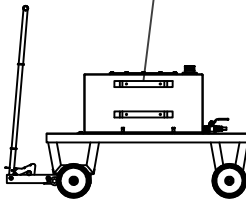
ILLUSTRATION OF MICRO PAC MW PUMP MOUNTED ON 100 L RESERVOIR / 4 WHEEL 316 TROLLEY AS P/N MR-P-3-0M FOR ASSEMBLY LESS HAND PUMP



FILLER BREATHER
 DRAIN KIT VALVE AVAILABLE
 (REQUEST AT TIME OF ORDER)
 ORDER AS PART NUMBER 001073700
 G1/2 BLANKED AS STANDARD



HOSE STOWAGE BRACKETS



DETACHABLE TROLLEY HANDLE
 FOR SHIPPING PURPOSES

FOOT BRAKE PEDAL RELEASE

UNLESS OTHERWISE STATED:
 DIMENSIONS IN MILLIMETRES
 SURFACE FINISH IN MICROMETRES
 REMOVE SHARP EDGES

HANDLE IN UPRIGHT POSITION
 ENGAGES BRAKE
 RELEASE LATCH AND PULL
 HANDLE TO RELEASE AND
 FREE WHEEL

© COPYRIGHT 2021 SARUM HYDRAULICS LTD.



SARUM HYDRAULICS LTD.

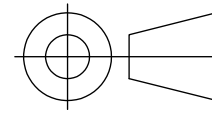
SALISBURY, SP4 6EB, UK
 www.sarum-hydraulics.co.uk

DRAWN N.O	APP JGF
	CHKD
SCALE F SIZE	SHEET OF
CAD 2-D	MR-P-3-0M
DRAWING NO.	MR-P-3-0M

3	2310302	FOOT PEDAL+REMOVABLE HANDLE	N.O 10/23
2	2110111	ADDED DRAIN KIT/ NOTES	10/21
1		FIRST ISSUE	09/21
ISSUE	D.C.N.	CHANGE DESCRIPTION & DATE	DATE IMPLEMENTED

TITLE
INSTALLATION DRAWING PUMP/100 L 316 RESERVOIR/TROLLEY
 MATERIAL PER NOTE
 FINISH PER NOTE

IF IN DOUBT, ASK THIRD ANGLE PROJECTION



TOLERANCES UNLESS OTHERWISE STATED
 GENERAL TOLERANCES RIGHT ANGLE BENDS &
 NO DEC. PLACE +/-1.0mm OTHER ANGLES +/-1°
 ONE DEC. PLACE +/-0.3mm MACHINED DIAMETERS
 TWO DEC. PLACE +/-0.1mm CONCENTRIC WITHIN
 +/-0.1mm T.I.R.
 SCREW THREADS ARE ISO METRIC COARSE PITCH
 TOL. 6g/6H (MED. FIT) TO BS3643
 WIRE DIA./PLATE THICKNESS TO COMMERCIAL LIMITS
 GEOMETRICAL TOLERANCING TO BS308 PART 3

- NOTES
1. MATERIALS ALUMINIUM ALLOY 5251
 2. ORDERING CODES
 MR = MICROPAC RESERVOIR
 P= PORTABLE SERIES
 A= ALUMINIUM ALLOY 5251 MARINE GRADE
 05 = 5 LITRES
 3. CONSULT DATA SHEET FOR FULL DESCRIPTION
 4. PUMP IS SHOWN FOR CLARITY BUT MUST BE ORDERED SEPARATELY
 5. INTEGRATED PUMP/RESERVOIR TEST SETS AVAILABLE UNDER PART MP- CONSULT DATA SHEET
 6. RESERVOIRS INCLUDE FILLER/BREATHER IN POLYMER.
 7. RESERVOIRS ARE NOT PRESSURE VESSELS, MAX PRESSURE 0.3 BARG
 8. DIMENSIONS IN MM
 9. SPECIFICATIONS MAY BE SUBJECT TO REVISION
 10. MASS WITHOUT PUMP AND DRY 3KG
- WARNING- FOLLOW MANUAL HANDLING GUIDELINES AND REGULATIONS

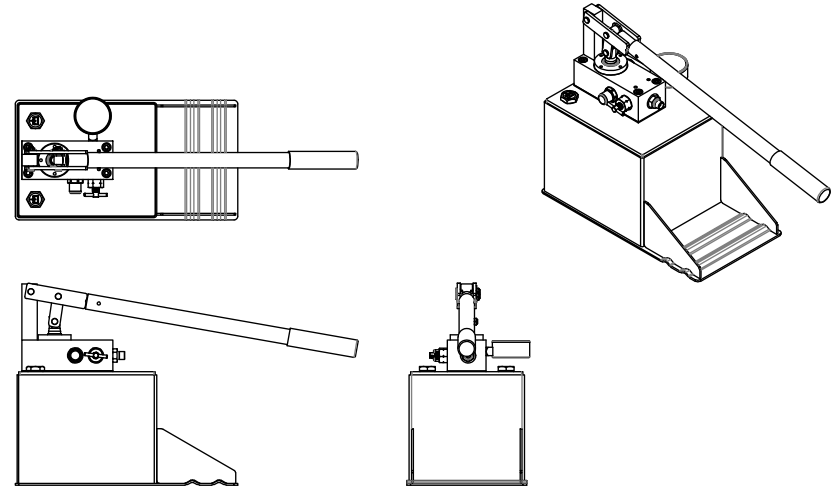
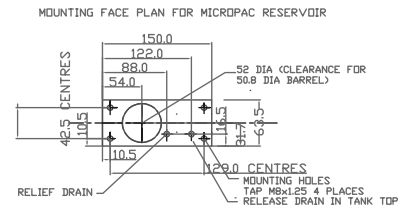
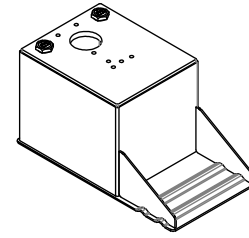
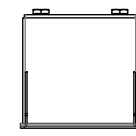
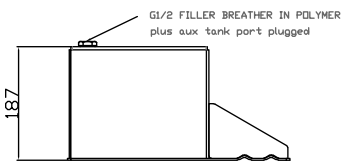
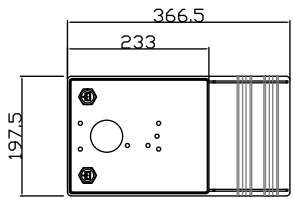
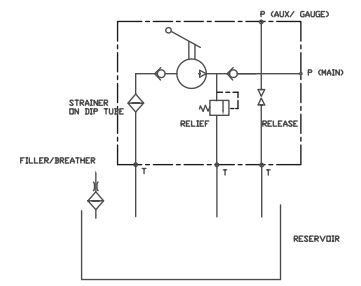


ILLUSTRATION OF MICROPAC MW PUMP MOUNTED ON RESERVOIR MR-P-A-05
 ORDER A PUMP PLUS A RESERVOIR



DIMENSIONS RESERVOIR MR-P-A-05

HYDRAULIC CIRCUIT FOR MICROPAC PUMP/RESERVOIR



UNLESS OTHERWISE STATED:
 DIMENSIONS IN MILLIMETRES
 SURFACE FINISH IN MICROMETRES
 REMOVE SHARP EDGES

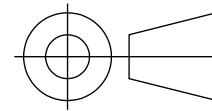
© COPYRIGHT 2020 SARUM HYDRAULICS LTD.

	SARUM HYDRAULICS LTD.		DRAWN JF	APP
	SALISBURY, SP4 6EB, UK www.sarum-hydraulics.co.uk		SCALE F SIZE	SHEET OF
TITLE		CAD 2-D MR-P-A-05		DRAWING NO.
INSTALLATION DRAWING PUMP/5 L ALLOY PORTABLE RESERVOIR		MR-P-A-05		
2	2003151	updated to solid model	03/20	
1	1	first issue	03/17	
ISSUE	D.C.N.	CHANGE DESCRIPTION & DATE	DATE IMPLEMENTED	FINISH PER NOTE

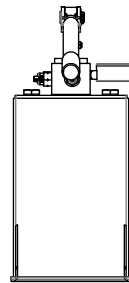
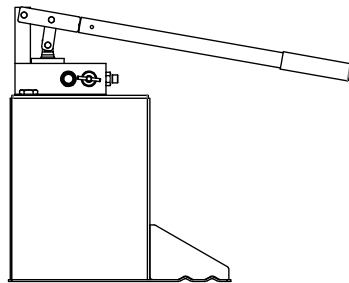
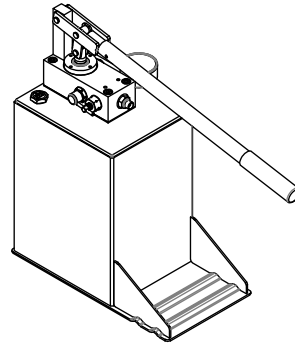
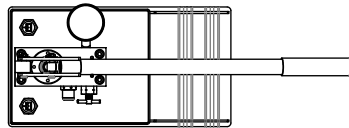
IF IN DOUBT, ASK THIRD ANGLE PROJECTION

NOTES

1. MATERIALS ALUMINIUM ALLOY 5251 MARINE GRADE & 6082T6
 2. ORDERING CODES
MR = MICROPAC RESERVOIR
P= PORTABLE SERIES
A= MARINE GRADE ALUMINIUM ALLOY 5251 & 6082T6
10 = 10 LITRES
 3. CONSULT DATA SHEET FOR FULL DESCRIPTION
 4. PUMP IS SHOWN FOR CLARITY BUT MUST BE ORDERED SEPARATELY
 5. INTEGRATED PUMP/RESERVOIR TEST SETS AVAILABLE UNDER PART MP- CONSULT DATA SHEET
 6. RESERVOIRS INCLUDE FILLER/BREATHER IN POLYMER.
 7. RESERVOIRS ARE NOT PRESSURE VESSELS. MAX PRESSURE 0.3 BARG
 8. DIMENSIONS IN MM
 9. SPECIFICATIONS MAY BE SUBJECT TO REVISION
 10. MASS WITHOUT PUMP AND DRY 3.5KG
- WARNING- FOLLOW MANUAL HANDLING GUIDELINES AND REGULATIONS



TOLERANCES UNLESS OTHERWISE STATED
 GENERAL TOLERANCES RIGHT ANGLE BENDS &
 NO DEC. PLACE +/-1.0mm OTHER ANGLES +/-1°
 ONE DEC. PLACE +/-0.3mm MACHINED DIAMETERS
 TWO DEC. PLACE +/-0.1mm CONCENTRIC WITHIN
 +/-0.1mm T.I.R.
 SCREW THREADS ARE ISO METRIC COARSE PITCH
 TOL. 6g/6H (MED. FIT) TO BS3643
 WIRE DIA./PLATE THICKNESS TO COMMERCIAL LIMITS
 GEOMETRICAL TOLERANCING TO BS308 PART 3



HYDRAULIC CIRCUIT FOR MICROPAC PUMP/RESERVOIR

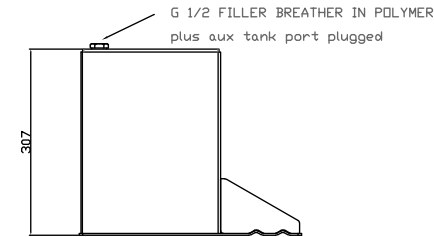
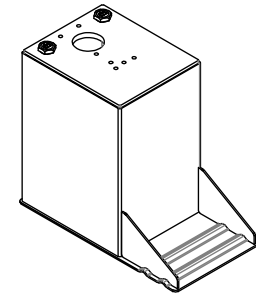
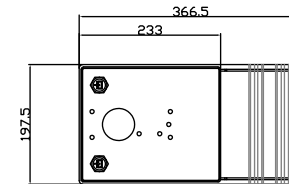
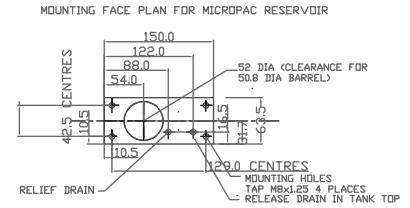
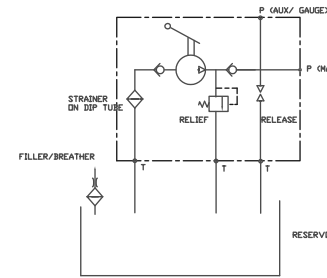


ILLUSTRATION OF MICROPAC MW PUMP MOUNTED ON RESERVOIR MR-P-A-10
 ORDER A PUMP PLUS A RESERVOIR

DIMENSIONS RESERVOIR MR-P-A-10

UNLESS OTHERWISE STATED:
 DIMENSIONS IN MILLIMETRES
 SURFACE FINISH IN MICROMETRES
 REMOVE SHARP EDGES

© COPYRIGHT 2020 SARUM HYDRAULICS LTD.



SARUM HYDRAULICS LTD.

SALISBURY, SP4 6EB, UK
 www.sarum-hydraulics.co.uk

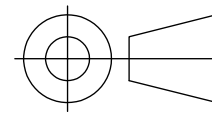
DRAWN JF	APP
	CHKD
SCALE F SIZE	SHEET OF
CAD 2-D MR-P-A-10	
DRAWING NO.	
MR-P-A-10	

TITLE	INSTALLATION DRAWING PUMP/10 L ALLOY PORTABLE RESERVOIR
MATERIAL PER NOTE	
FINISH PER NOTE	

2	2003152	updated to solid model	03/20
1		FIRST ISSUE	05/19
ISSUE	D.C.N.	CHANGE DESCRIPTION & DATE	DATE IMPLEMENTED

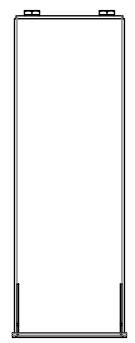
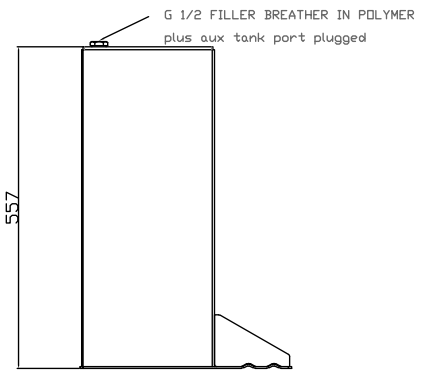
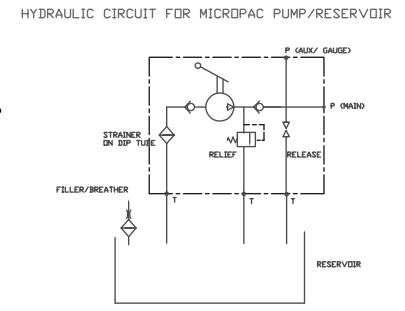
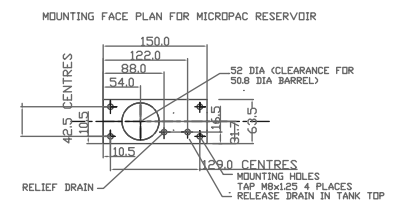
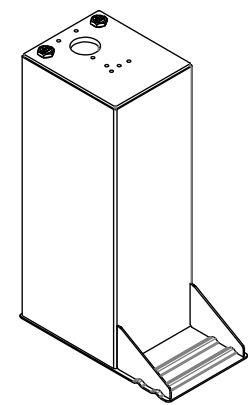
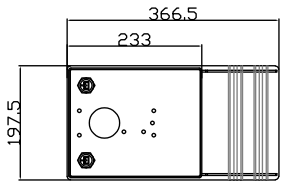
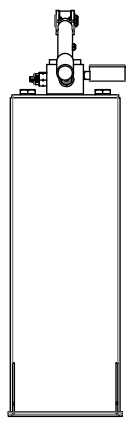
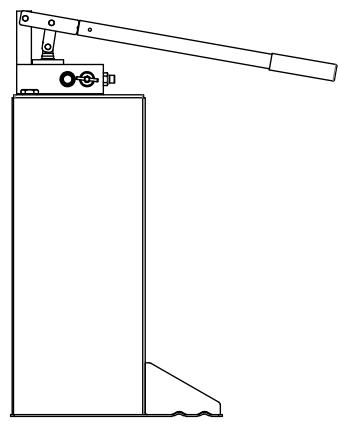
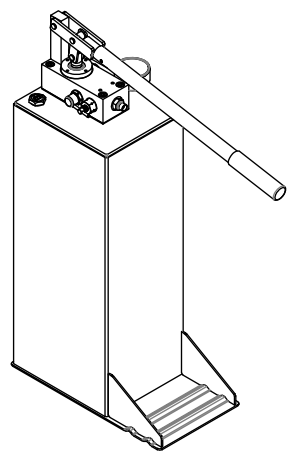
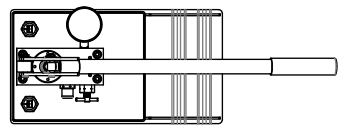
IF IN DOUBT, ASK

THIRD ANGLE PROJECTION



TOLERANCES UNLESS OTHERWISE STATED
 GENERAL TOLERANCES RIGHT ANGLE BENDS &
 NO DEC. PLACE +/-1.0mm OTHER ANGLES +/-1°
 ONE DEC. PLACE +/-0.3mm MACHINED DIAMETERS
 TWO DEC. PLACE +/-0.1mm CONCENTRIC WITHIN
 +/-0.1mm T.I.R.
 SCREW THREADS ARE ISO METRIC COARSE PITCH
 TOL. 6g/6H (MED. FIT) TO BS3643
 WIRE DIA./PLATE THICKNESS TO COMMERCIAL LIMITS
 GEOMETRICAL TOLERANCING TO BS308 PART 3

- NOTES
1. MATERIALS ALUMINIUM ALLOY 5251 MARINE GRADE & 6082T6
 2. ORDERING CODES
 MR = MICROPACK RESERVOIR
 P= PORTABLE SERIES
 A= MARINE GRADE ALUMINIUM ALLOY 5251 & 6082T6
 20 = 20 LITRES
 3. CONSULT DATA SHEET FOR FULL DESCRIPTION
 4. PUMP IS SHOWN FOR CLARITY BUT MUST BE ORDERED SEPARATELY
 5. INTEGRATED PUMP/RESERVOIR TEST SETS AVAILABLE UNDER PART MP
 - CONSULT DATA SHEET
 6. RESERVOIRS INCLUDE FILLER/BREATHER IN POLYMER.
 7. RESERVOIRS ARE NOT PRESSURE VESSELS. MAX PRESSURE 0.3 BARG
 8. DIMENSIONS IN MM
 9. SPECIFICATIONS MAY BE SUBJECT TO REVISION
 10. MASS WITHOUT PUMP AND DRY 4.5KG
- WARNING- FOLLOW MANUAL HANDLING GUIDELINES AND REGULATIONS



UNLESS OTHERWISE STATED:
 DIMENSIONS IN MILLIMETRES
 SURFACE FINISH IN MICROMETRES
 REMOVE SHARP EDGES

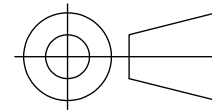
ILLUSTRATION OF MICROPACK MW PUMP MOUNTED
 ON RESERVOIR MR-P-A-20
 ORDER A PUMP PLUS A RESERVOIR

DIMENSIONS RESERVOIR MR-P-A-20

© COPYRIGHT 2020 SARUM HYDRAULICS LTD.

		SARUM HYDRAULICS LTD.		DRAWN JF	APP
		SALISBURY, SP4 6EB, UK www.sarum-hydraulics.co.uk		SCALE F SIZE	SHEET OF
TITLE		INSTALLATION DRAWING PUMP/20 L ALLOY PORTABLE RESERVOIR		CAD 2-D MR-P-A-20	
MATERIAL PER NOTE		FINISH PER NOTE		DRAWING NO.	
2	2007271	REDRAWN FROM MODEL	07/20	MR-P-A-20	
1		FIRST ISSUE	07/20		
ISSUE	D.C.N.	CHANGE DESCRIPTION & DATE	DATE IMPLEMENTED		

IF IN DOUBT, ASK THIRD ANGLE PROJECTION



MEMO- ALSO SPECIAL PART NUMBERS ALLOCATED FOR SPECIFIC UNITS
 NOTE 901012800 HAS STANDARD VENT PLUG
 AND STANDARD RELEASE VALVE
 901012801 FITTED PRESSURISED FILLER BREATHER
 AND USES EXTERNAL NEEDLE VALVE RELEASE
 MR-F-3-01 IS INSTALLATION DRAWING FOR 1 LITRE FIXED 316

TOLERANCES UNLESS OTHERWISE STATED
 GENERAL TOLERANCES RIGHT ANGLE BENDS &
 NO DEC. PLACE +/-1.0mm OTHER ANGLES +/-1°
 ONE DEC. PLACE +/-0.3mm MACHINED DIAMETERS
 TWO DEC. PLACE +/-0.1mm CONCENTRIC WITHIN
 +/-0.1mm T.I.R.
 SCREW THREADS ARE ISO METRIC COARSE PITCH
 TOL. 6g/6H (MED. FIT) TO BS3643
 WIRE DIA./PLATE THICKNESS TO COMMERCIAL LIMITS
 GEOMETRICAL TOLERANCING TO BS308 PART 3

- NOTES:
1. MATERIALS OF CONSTRUCTION ON RESERVOIR
 STAINLESS STEEL BS970 316
 CAP POLYMER
 2. ALL DIMENSIONS IN mm
 3. MASS 2 KG DRY RESERVOIR ALONE
 4. USE DATA SHEET 001026300 FOR ORDERING CODES ON RESERVOIR
 5. ORDER PUMP AND RESERVOIR AS SEPARATE PART NUMBERS
 6. MEMO- RESERVOIR FABRICATION DG. IS 001023800
 7. THE RESERVOIR IS NOT A PRESSURE VESSEL
 IT MUST ALWAYS BE VENTED TO ATMOSPHERE
 MAXIMUM INTERNAL PRESSURE 0.3 BAR
 8. NOMINAL CAPACITY 1 LITRE (0.26USG)
 9. ATEX MODEL AVAILABLE: ADD -AX TO END OF ORDERING CODE

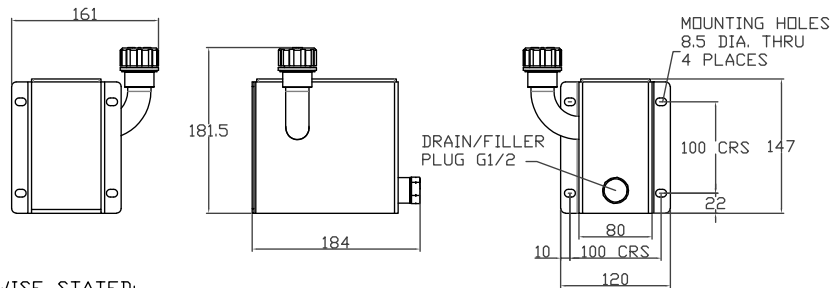
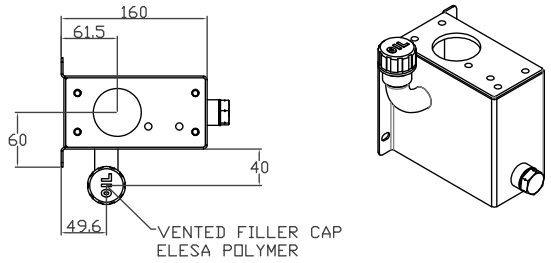
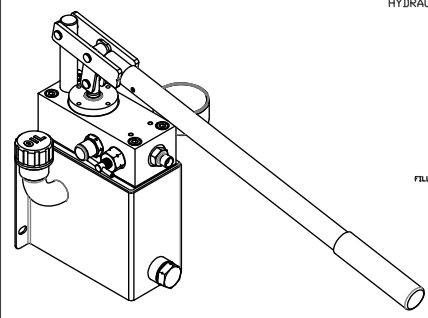
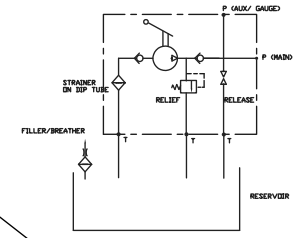


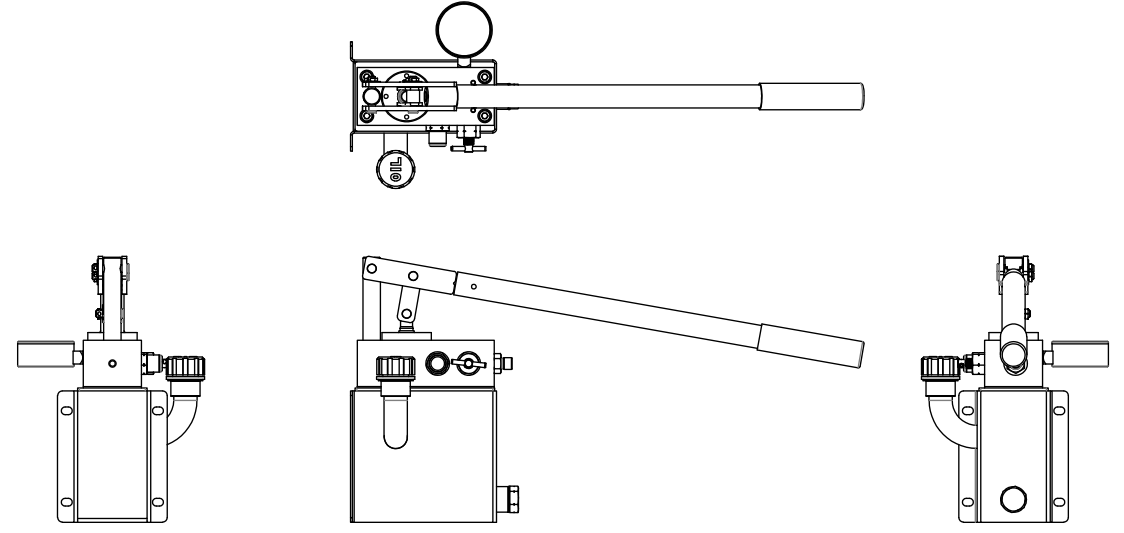
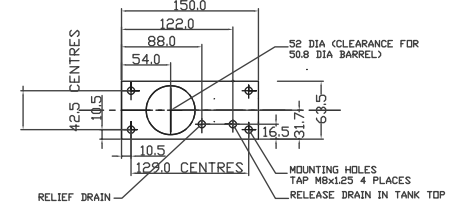
ILLUSTRATION OF MICROPAC HW PUMP MOUNTED ON RESERVOIR MR-F-3-01
 ORDER A PUMP PLUS A RESERVOIR



HYDRAULIC CIRCUIT FOR MICROPAC PUMP/RESERVOIR



MOUNTING FACE PLAN FOR MICROPAC RESERVOIR



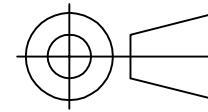
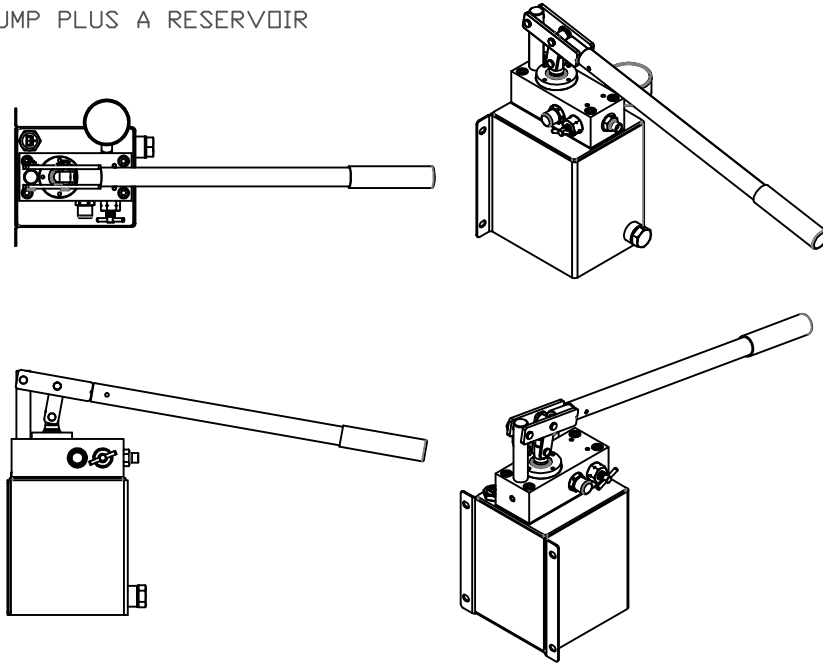
UNLESS OTHERWISE STATED:
 DIMENSIONS IN MILLIMETRES
 SURFACE FINISH IN MICROMETRES
 REMOVE SHARP EDGES

© COPYRIGHT 2020 SARUM HYDRAULICS LTD.

	SARUM HYDRAULICS LTD.		DRAWN JF	APP
	SALISBURY, SP4 6EB, UK www.sarum-hydraulics.co.uk		SCALE F SIZE	SHEET OF
TITLE		CAD 2-D MR-F-3-01		DRAWING NO.
INSTALLATION DRAWING PUMP/1 L 316 RESERVOIR		MR-F-3-01		
ISSUE	D.C.N.	CHANGE DESCRIPTION & DATE	DATE IMPLEMENTED	FINISH PER NOTE
3	20072201	3D UPDATE	N.D 07/20	
2	1604052	ADD CAP, CORRECT FILLER/FLANGE	04/16	
1		FIRST ISSUE	12/14	

IF IN DOUBT, ASK THIRD ANGLE PROJECTION

ILLUSTRATION OF MICROPAC MW PUMP MOUNTED ON RESERVOIR MR-F-3-02
ORDER A PUMP PLUS A RESERVOIR

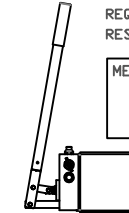
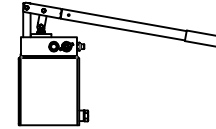


TOLERANCES UNLESS OTHERWISE STATED
 GENERAL TOLERANCES RIGHT ANGLE BENDS &
 NO DEC. PLACE +/-1.0mm OTHER ANGLES +/-1°
 ONE DEC. PLACE +/-0.3mm MACHINED DIAMETERS
 TWO DEC. PLACE +/-0.1mm CONCENTRIC WITHIN
 +/-0.1mm T.I.R.
 SCREW THREADS ARE ISO METRIC COARSE PITCH
 TOL. 6g/6h (MED. FIT) TO BS3643
 WIRE DIA./PLATE THICKNESS TO COMMERCIAL LIMITS
 GEOMETRICAL TOLERANCING TO BS308 PART 3

PERMISSIBLE MOUNTING ORIENTATION

DEFAULT/STANDARD RESERVOIR VERTICAL.
PREFERRED ORIENTATION

RESERVOIR HORIZONTAL UPON REQUEST
 REQUEST AT TIME OF ORDERING TO ACHIEVE FULL CAPACITY.
 RESERVOIR REQUIRES SEALING AND LEAK TESTING IN PRODUCTION

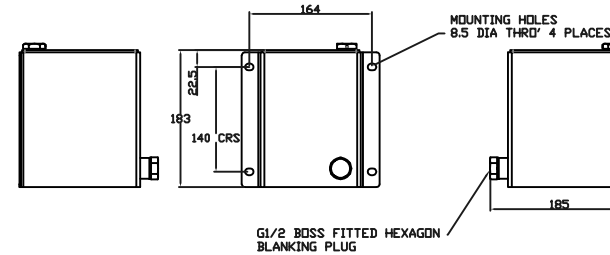
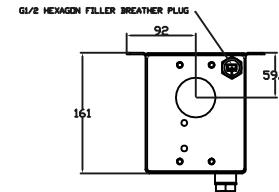


MEMO: HORIZONTAL MOUNT INLET KIT 303/DELTRIN IS
 001069400
 HORIZONTAL MOUNT INLET KIT 316/316 FILTER IS
 001069500

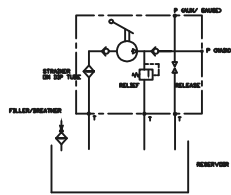
NOTES

DIMENSIONS RESERVOIR MR-F-3-02

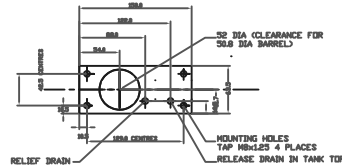
1. MATERIALS OF CONSTRUCTION
 316 STAINLESS 1.4404
 CAP POLYMER
2. ALL DIMENSIONS IN mm
3. MASS 3 KG DRY
4. USE DATA SHEET 001026300 FOR ORDERING CODES
5. ORDER PUMP AND RESERVOIR AS SEPARATE ITEMS
6. MEMO- RESERVOIR FABRICATION DG. IS 001005400
7. THE RESERVOIR IS NOT A PRESSURE VESSEL.
 IT MUST ALWAYS BE VENTED TO ATMOSPHERE
 MAXIMUM INTERNAL PRESSURE 0.3 BARG
8. NOMINAL CAPACITY 2.5 LITRES (0.67USG)
9. ATEX MODEL AVAILABLE; ADD -AX TO END OF ORDERING CODE
10. HORIZONTAL MOUNTING AVAILABLE; PLEASE REQUEST AT TIME OF ORDER



HYDRAULIC CIRCUIT FOR MICROPAC PUMP/RESERVOIR



MOUNTING FACE PLAN FOR MICROPAC RESERVOIR



UNLESS OTHERWISE STATED:
 DIMENSIONS IN MILLIMETRES
 SURFACE FINISH IN MICROMETRES
 REMOVE SHARP EDGES

© COPYRIGHT 2020 SARUM HYDRAULICS LTD.



SARUM HYDRAULICS LTD.

SALISBURY, SP4 6EB, UK
 www.sarum-hydraulics.co.uk

DRAWN JF APP

CHKD

SCALE F SIZE SHEET OF

CAD 2-D MR-F-3-02

DRAWING NO.

MR-F-3-02

5	2007221	HORIZONTAL MOUNTING KIT MEMO	N.D 07/20
4	2001121	ADD NOTE ON REDUCED VOL HORIZ. MT.	01/20
3	1905262	ADDED 3D DETAIL	05/19
2	1309041	ADDED CIRCUIT DIAGRAM	09/13
1		FIRST ISSUE	01/07
ISSUE	D.C.N.	CHANGE DESCRIPTION & DATE	DATE IMPLEMENTED

TITLE
INSTALLATION DRAWING PUMP/2.5 L 316 RESERVOIR

MATERIAL PER NOTE

FINISH PER NOTE

IF IN DOUBT, ASK THIRD ANGLE PROJECTION

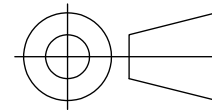
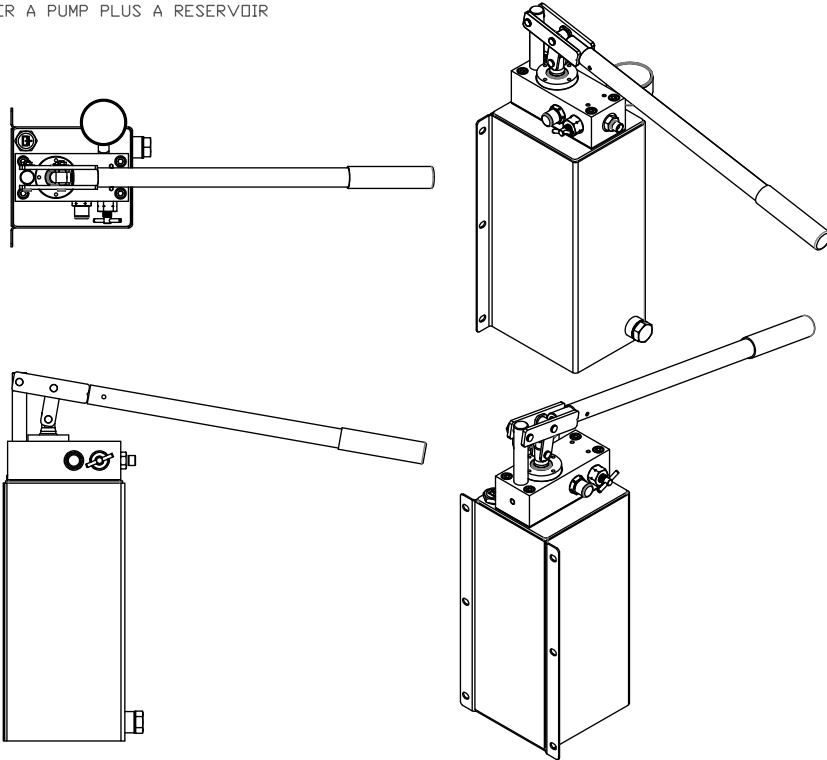
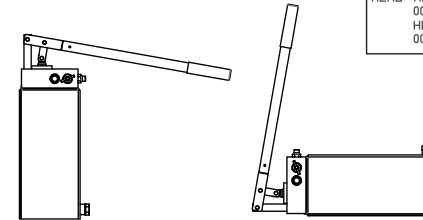


ILLUSTRATION OF MICROPAC MW PUMP MOUNTED ON RESERVOIR MR-F-3-05
ORDER A PUMP PLUS A RESERVOIR



PERMISSIBLE MOUNTING ORIENTATION

DEFAULT/STANDARD RESERVOIR VERTICAL. PREFERRED ORIENTATION



TOLERANCES UNLESS OTHERWISE STATED
GENERAL TOLERANCES RIGHT ANGLE BENDS &
NO DEC. PLACE +/-1.0mm OTHER ANGLES +/-1°
ONE DEC. PLACE +/-0.3mm MACHINED DIAMETERS
TWO DEC. PLACE +/-0.1mm CONCENTRIC WITHIN
+/-0.1mm T.I.R.
SCREW THREADS ARE ISO METRIC COARSE PITCH
TOL. 6g/6H (MED. FIT) TO BS3643
WIRE DIA./PLATE THICKNESS TO COMMERCIAL LIMITS
GEOMETRICAL TOLERANCING TO BS308 PART 3

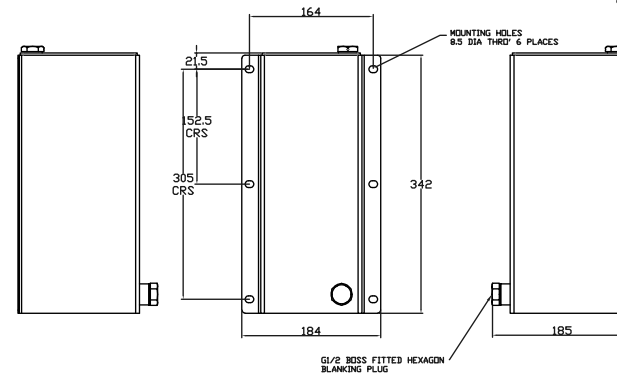
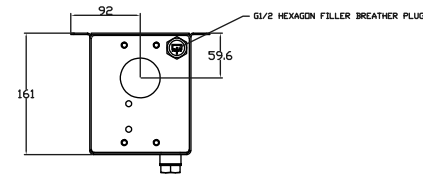
RESERVOIR HORIZONTAL MOUNTING UPON REQUEST
REQUEST AT TIME OF ORDERING TO ACHIEVE FULL CAPACITY.
RESERVOIR REQUIRES SEALING AND LEAK TESTING IN PRODUCTION.

MEMO: HORIZONTAL MOUNT INLET KIT 303/DELRIN IS 001069400
HORIZONTAL MOUNT INLET KIT 316/316 FILTER IS 001069500

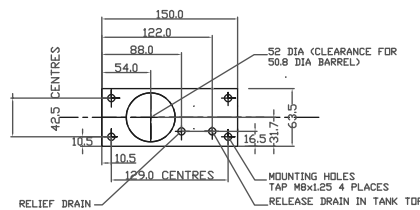
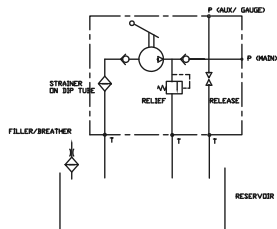
DIMENSIONS RESERVOIR MR-F-3-05

NOTES

- MATERIALS OF CONSTRUCTION
316 STAINLESS 1.4404
CAP POLYMER
- ALL DIMENSIONS IN mm
- MASS 4.5 KG DRY
- USE DATA SHEET 001026300 FOR ORDERING CODES
- ORDER PUMP AND RESERVOIR AS SEPARATE ITEMS
- THE RESERVOIR IS NOT A PRESSURE VESSEL.
IT MUST ALWAYS BE VENTED TO ATMOSPHERE
MAXIMUM INTERNAL PRESSURE 0.3 BARG
- NOMINAL CAPACITY 5 LITRES (1.3USG)
- ATEX MODEL AVAILABLE: ADD -AX TO END OF ORDERING CODE
- HORIZONTAL MOUNTING AVAILABLE; PLEASE REQUEST AT TIME OF ORDER



HYDRAULIC CIRCUIT FOR MICROPAC PUMP/RESERVOIR MOUNTING FACE PLAN FOR MICROPAC RESERVOIR



UNLESS OTHERWISE STATED:
DIMENSIONS IN MILLIMETRES
SURFACE FINISH IN MICROMETRES
REMOVE SHARP EDGES

© COPYRIGHT 2020 SARUM HYDRAULICS LTD.



SARUM HYDRAULICS LTD.

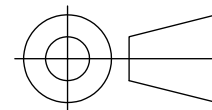
SALISBURY, SP4 6EB, UK
www.sarum-hydraulics.co.uk

TITLE
INSTALLATION DRAWING PUMP/5 L 316 RESERVOIR
MATERIAL PER NOTE
FINISH PER NOTE

DRAWN	JF	APP	
		CHKD	
SCALE	F	SIZE	SHEET OF
CAD	2-D	MR-F-3-05	
DRAWING NO.	MR-F-3-05		

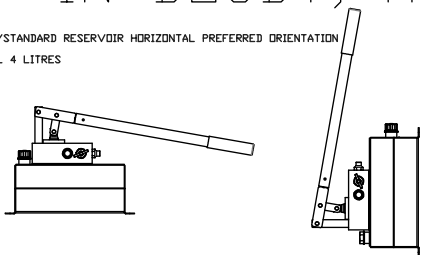
ISSUE	D.C.N.	CHANGE DESCRIPTION & DATE	DATE IMPLEMENTED
5	2001121	ADD NOTE ON REDUCED VOL HORIZ. MT.	01/20
4	1905261	3D UPDATE	05/19
3	1101181	NEW PART NO. QUOTED	06/12
2	1101181	TITLE ERROR CORRECTED	01/11
1		FIRST ISSUE	01/07

IF IN DOUBT, ASK THIRD ANGLE PROJECTION



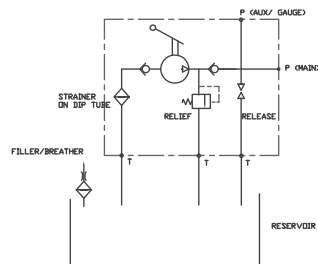
TOLERANCES UNLESS OTHERWISE STATED
 GENERAL TOLERANCES RIGHT ANGLE BENDS &
 NO DEC. PLACE +/-1.0mm OTHER ANGLES +/-1°
 ONE DEC. PLACE +/-0.3mm MACHINED DIAMETERS
 TWO DEC. PLACE +/-0.1mm CONCENTRIC WITHIN
 +/-0.1mm T.I.R.
 SCREW THREADS ARE ISO METRIC COARSE PITCH
 TOL. 6g/6H (MED. FIT) TO BS3643
 WIRE DIA./PLATE THICKNESS TO COMMERCIAL LIMITS
 GEOMETRICAL TOLERANCING TO BS308 PART 3

DEFAULT/STANDARD RESERVOIR HORIZONTAL PREFERRED ORIENTATION
 FOR FULL 4 LITRES



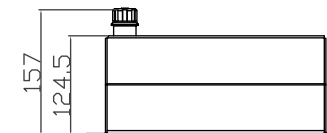
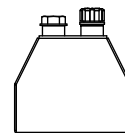
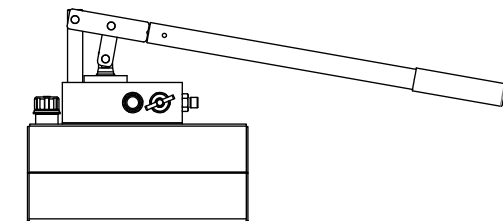
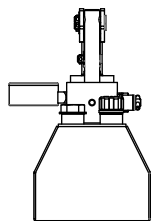
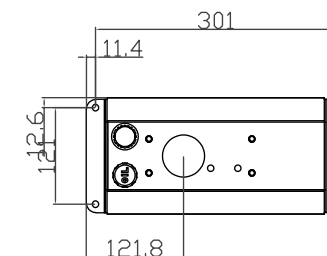
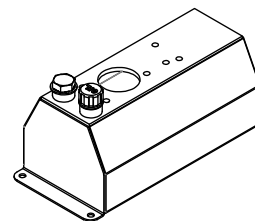
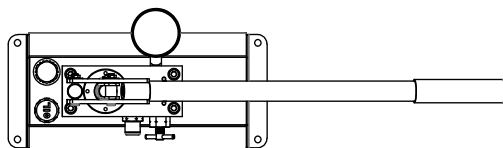
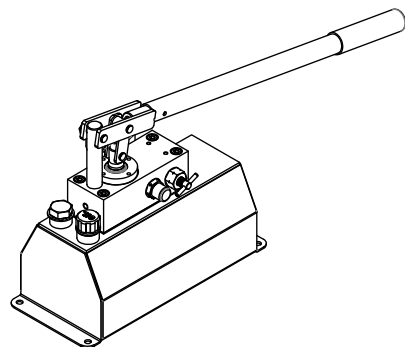
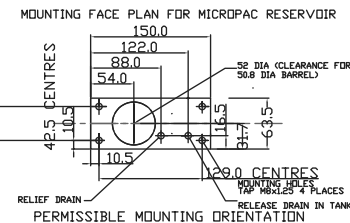
VERTICAL OPERATION REQUIRES SPECIAL RESERVOIR
 WITH END FILLER. CONSULT FACTORY

HYDRAULIC CIRCUIT FOR MICRO PAC PUMP/RESERVOIR



NOTES

1. MATERIALS OF CONSTRUCTION
 316 STAINLESS 1.4404
 CAP POLYMER
2. ALL DIMENSIONS IN mm
3. MASS 5 KG DRY
4. USE DATA SHEET 001026300 FOR ORDERING CODES
5. ORDER PUMP AND RESERVOIR AS SEPARATE ITEMS
6. THE RESERVOIR IS NOT A PRESSURE VESSEL.
 IT MUST ALWAYS BE VENTED TO ATMOSPHERE
 MAXIMUM INTERNAL PRESSURE 0.3 BARG
7. NOMINAL CAPACITY 4 LITRES (1 USG)
8. ATEX MODEL AVAILABLE: ADD -AX TO END OF ORDERING CODE



DIMENSIONS RESERVOIR MR-F-3-4E

ILLUSTRATION OF MICRO PAC MW PUMP MOUNTED ON RESERVOIR MR-F-3-4E

ORDER A PUMP PLUS A RESERVOIR
 UNLESS OTHERWISE STATED:
 DIMENSIONS IN MILLIMETRES
 SURFACE FINISH IN MICROMETRES
 REMOVE SHARP EDGES

© COPYRIGHT 2020 SARUM HYDRAULICS LTD.



SARUM HYDRAULICS LTD.

SALISBURY, SP4 6EB, UK
 www.sarum-hydraulics.co.uk

DRAWN JF	APP
	CHKD
SCALE F SIZE	SHEET OF
CAD 2-D MR-F-3-4E	

TITLE
INSTALLATION DRAWING PUMP/4L 316 ERGO RESERVOIR
 MATERIAL PER NOTE
 FINISH PER NOTE

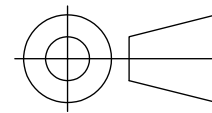
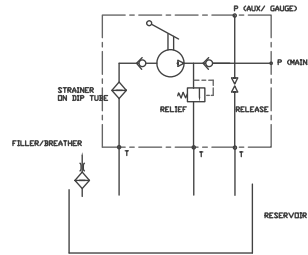
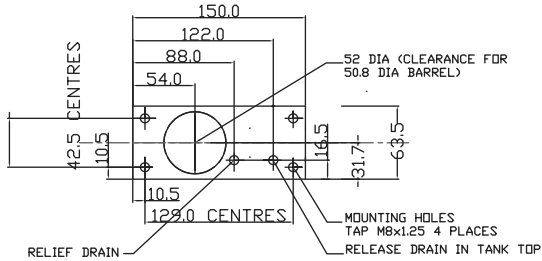
DRAWING NO.
MR-F-3-4E

ISSUE	D.C.N.	CHANGE DESCRIPTION & DATE	DATE IMPLEMENTED
3	2007241	REDRAW FROM MODEL	07/20
2	1511105	MOD RESERVOIR	11/15
1		FIRST ISSUE	05/12

IF IN DOUBT, ASK THIRD ANGLE PROJECTION

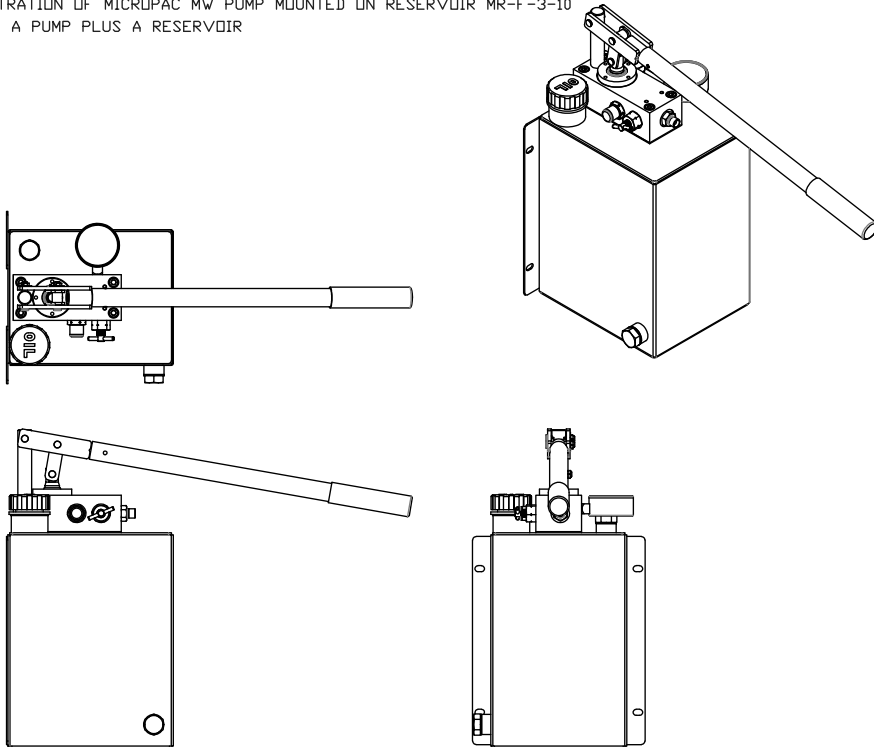
MOUNTING FACE PLAN FOR MICRO PAC RESERVOIR

HYDRAULIC CIRCUIT FOR MICRO PAC PUMP/RESERVOIR



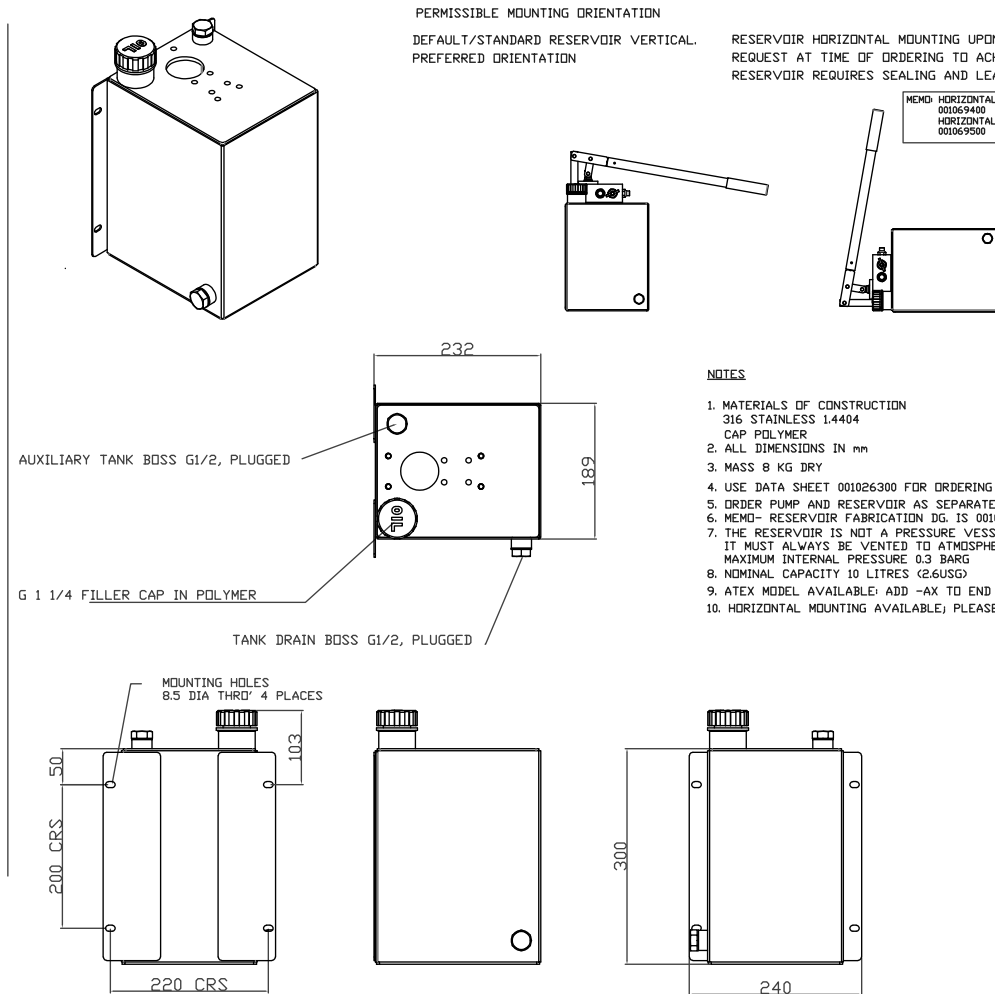
TOLERANCES UNLESS OTHERWISE STATED
GENERAL TOLERANCES RIGHT ANGLE BENDS &
NO DEC. PLACE +/-1.0mm OTHER ANGLES +/-1°
ONE DEC. PLACE +/-0.3mm MACHINED DIAMETERS
TWO DEC. PLACE +/-0.1mm CONCENTRIC WITHIN +/-0.1mm T.I.R.
SCREW THREADS ARE ISO METRIC COARSE PITCH
TOL. 6g/6H (MED. FIT) TO BS3643
WIRE DIA./PLATE THICKNESS TO COMMERCIAL LIMITS
GEOMETRICAL TOLERANCING TO BS308 PART 3

ILLUSTRATION OF MICRO PAC MW PUMP MOUNTED ON RESERVOIR MR-F-3-10
ORDER A PUMP PLUS A RESERVOIR



UNLESS OTHERWISE STATED:
DIMENSIONS IN MILLIMETRES
SURFACE FINISH IN MICROMETRES
REMOVE SHARP EDGES

DIMENSIONS RESERVOIR MR-F-3-10



© COPYRIGHT 2020 SARUM HYDRAULICS LTD.



SARUM HYDRAULICS LTD.

SALISBURY, SP4 6EB, UK
www.sarum-hydraulics.co.uk

TITLE
INSTALLATION DRAWING PUMP/10 L 316 RESERVOIR

MATERIAL PER NOTE
FINISH PER NOTE

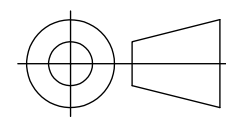
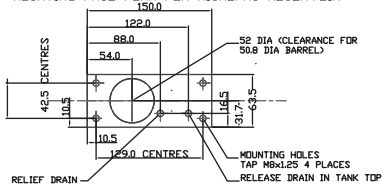
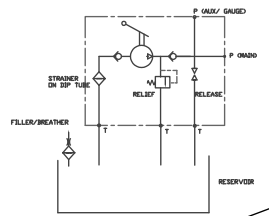
DRAWN	JF	APP	
		CHKD	
SCALE	F	SIZE	SHEET OF
CAD	2-D	MR-F-3-10	
DRAWING NO.	MR-F-3-10		

ISSUE	D.C.N.	CHANGE DESCRIPTION & DATE	DATE IMPLEMENTED
5	1911231	MIRROR FILLER AND RETURN	11/19
4	1910031	UPDATE TO 3D MODEL ACTUAL	10/19
3	1712011	ADD PUMP DETAIL	12/17
2	1604051	ADD CAP & MASS	01/16
1		FIRST ISSUE	10/12

IF IN DOUBT, ASK THIRD ANGLE PROJECTION

HYDRAULIC CIRCUIT FOR MICRO PAC PUMP/RESERVOIR

MOUNTING FACE PLAN FOR MICRO PAC RESERVOIR



TOLERANCES UNLESS OTHERWISE STATED
 GENERAL TOLERANCES RIGHT ANGLE BENDS &
 NO DEC. PLACE +/-1.0mm OTHER ANGLES +/-1°
 ONE DEC. PLACE +/-0.3mm MACHINED DIAMETERS
 TWO DEC. PLACE +/-0.1mm CONCENTRIC WITH
 +/-0.1mm T.I.R.
 SCREW THREADS ARE ISO METRIC COARSE PITCH
 TOL. 6g/6H (MED. FIT) TO BS3643
 WIRE DIA./PLATE THICKNESS TO COMMERCIAL LIMITS
 GEOMETRICAL TOLERANCING TO BS308 PART 3

- NOTES**
1. MATERIALS OF CONSTRUCTION
 316 STAINLESS 1.4404
 CAP POLYMER
 2. ALL DIMENSIONS IN mm
 3. MASS 10 KG DRY
 4. USE DATA SHEET 001026300 FOR ORDERING CODES
 5. ORDER PUMP AND RESERVOIR AS SEPARATE ITEMS
 6. MEMO- RESERVOIR FABRICATION DG. IS 001028600
 7. THE RESERVOIR IS NOT A PRESSURE VESSEL.
 IT MUST ALWAYS BE VENTED TO ATMOSPHERE
 MAXIMUM INTERNAL PRESSURE 0.3 BARG
 8. NOMINAL CAPACITY 20 LITRES (5.2USG)
 9. ATEX MODEL AVAILABLE: ADD -AX TO END OF ORDERING CODE
 10. HORIZONTAL MOUNTING AVAILABLE; PLEASE REQUEST AT TIME OF ORDER

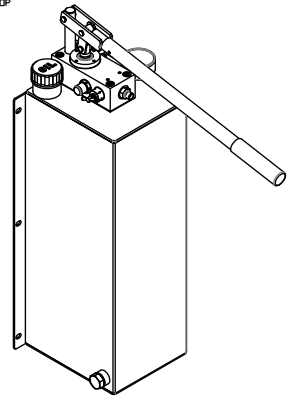
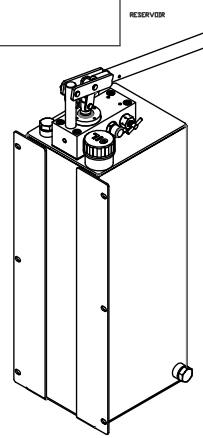
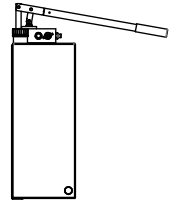


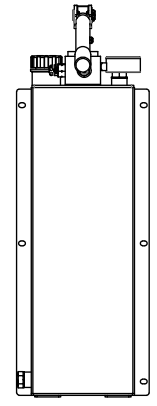
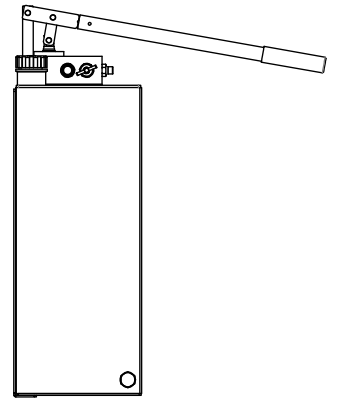
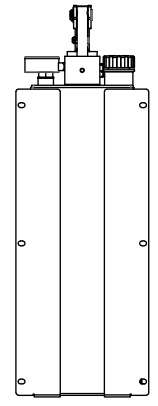
ILLUSTRATION OF MICRO PAC MW PUMP MOUNTED ON RESERVOIR MR-F-3-20
 ORDER A PUMP PLUS A RESERVOIR

PERMISSIBLE MOUNTING ORIENTATION
 DEFAULT/STANDARD RESERVOIR VERTICAL
 PREFERRED ORIENTATION

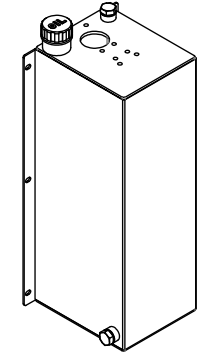
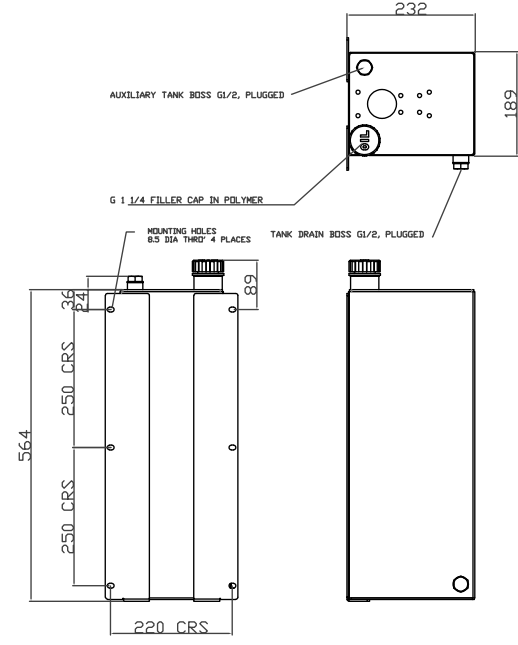


RESERVOIR HORIZONTAL MOUNTING UPON REQUEST
 REQUEST AT TIME OF ORDERING TO ACHIEVE FULL CAPACITY.
 RESERVOIR REQUIRES SEALING AND LEAK TESTING IN PRODUCTION.

MEMO: HORIZONTAL MOUNT INLET KIT 303/DELIRIN IS 001069400
 HORIZONTAL MOUNT INLET KIT 316/316 FILTER IS 001069500



DIMENSIONS RESERVOIR MR-F-3-10

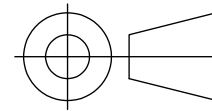


UNLESS OTHERWISE STATED:
 DIMENSIONS IN MILLIMETRES
 SURFACE FINISH IN MICROMETRES
 REMOVE SHARP EDGES

© COPYRIGHT 2020 SARUM HYDRAULICS LTD.

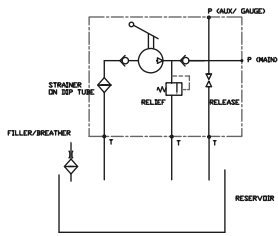
	SARUM HYDRAULICS LTD. SALISBURY, SP4 6EB, UK www.sarum-hydraulics.co.uk	DRAWN JF	APP
		SCALE F SIZE	SHEET OF
TITLE INSTALLATION DRAWING PUMP/20 L 316 RESERVOIR		CAD 2-D MR-F-3-20	
		DRAWING NO. MR-F-3-20	
2	2006231	REDRAWN FROM MODEL	07/20
1		FIRST ISSUE	10/12
ISSUE	D.C.N.	CHANGE DESCRIPTION & DATE	DATE IMPLEMENTED

IF IN DOUBT, ASK THIRD ANGLE PROJECTION

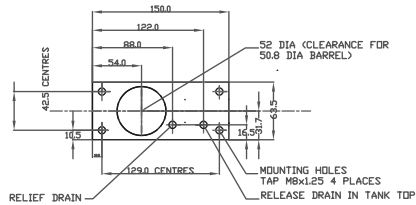


TOLERANCES UNLESS OTHERWISE STATED
 GENERAL TOLERANCES RIGHT ANGLE BENDS &
 NO DEC. PLACE +/-1.0mm OTHER ANGLES +/-1°
 ONE DEC. PLACE +/-0.3mm MACHINED DIAMETERS
 TWO DEC. PLACE +/-0.1mm CONCENTRIC WITHIN
 +/-0.1mm T.I.R.
 SCREW THREADS ARE ISO METRIC COARSE PITCH
 TOL. 6g/6H (MED. FIT) TO BS3643
 WIRE DIA./PLATE THICKNESS TO COMMERCIAL LIMITS
 GEOMETRICAL TOLERANCING TO BS308 PART 3

HYDRAULIC CIRCUIT FOR MICRODAC PUMP/RESERVOIR



MOUNTING FACE PLAN FOR MICRODAC RESERVOIR



NOTES

1. MATERIALS OF CONSTRUCTION
 316 STAINLESS 1.4404
 CAP POLYMER
2. ALL DIMENSIONS IN mm
3. MASS 18 KG DRY
4. USE DATA SHEET 001026300 FOR ORDERING CODES
5. ORDER PUMP AND RESERVOIR AS SEPARATE ITEMS
6. MEMO- RESERVOIR FABRICATION DG. IS 001069300
7. THE RESERVOIR IS NOT A PRESSURE VESSEL.
 IT MUST ALWAYS BE VENTED TO ATMOSPHERE
 MAXIMUM INTERNAL PRESSURE 0.3 BARG
8. NOMINAL CAPACITY 50 LITRES (13.2USG)
9. ATEX MODEL AVAILABLE: ADD -AX TO END OF ORDERING CODE

DRAWING OF MICRODAC MR 50 LITRE RESERVOIR MR-F-3-50
 ORDER A PUMP PLUS A RESERVOIR

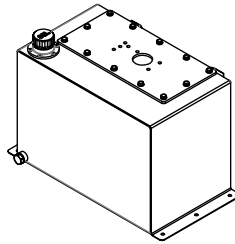
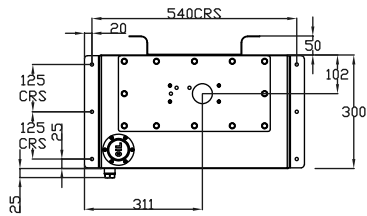
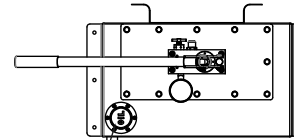
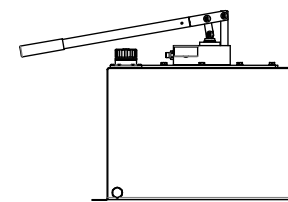
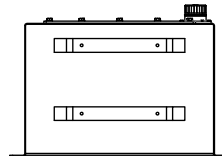
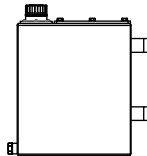
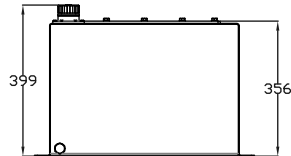
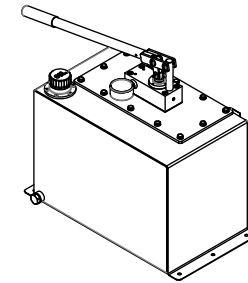


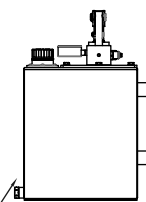
ILLUSTRATION OF MICRODAC MW PUMP MOUNTED ON RESERVOIR MR-F-3-50
 ORDER A PUMP PLUS A RESERVOIR



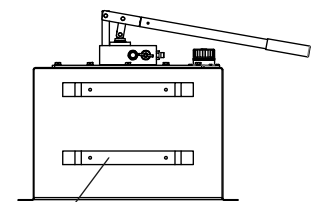
FILLER/BREATHER
 IN POLYMER



DRAIN PLUG
 G1/2



HOSE STOWAGE BRACKETS



UNLESS OTHERWISE STATED:
 DIMENSIONS IN MILLIMETRES
 SURFACE FINISH IN MICROMETRES
 REMOVE SHARP EDGES

© COPYRIGHT 2020 SARUM HYDRAULICS LTD.



SARUM HYDRAULICS LTD.

SALISBURY, SP4 6EB, UK
 www.sarum-hydraulics.co.uk

DRAWN JF	APP
	CHKD
SCALE F SIZE	SHEET OF
CAD 2-D MR-F-3-50	
DRAWING NO.	

TITLE
INSTALLATION DRAWING PUMP/50 L 316 RESERVOIR

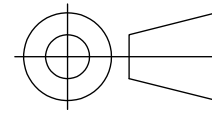
MR-F-3-50

3	2007232	REDRAW FROM MODEL	07/20
2	2003041	ADD HOSE STOWAGE BRACKET	03/20
1		FIRST ISSUE	10/08
ISSUE	D.C.N.	CHANGE DESCRIPTION & DATE	DATE IMPLEMENTED

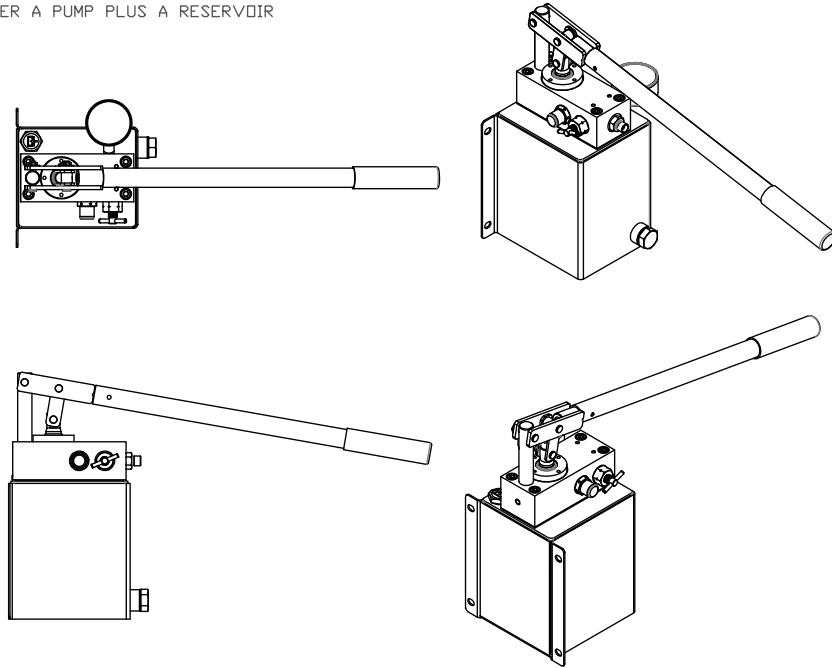
MATERIAL PER NOTE
 FINISH PER NOTE

IF IN DOUBT, ASK THIRD ANGLE PROJECTION

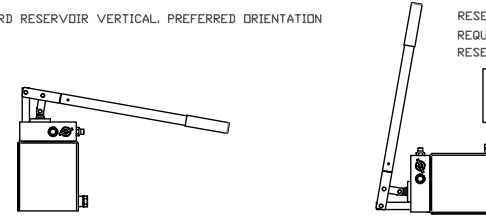
ILLUSTRATION OF MICROPAC MW PUMP MOUNTED ON RESERVOIR MR-F-A-02
ORDER A PUMP PLUS A RESERVOIR



TOLERANCES UNLESS OTHERWISE STATED
 GENERAL TOLERANCES RIGHT ANGLE BENDS &
 NO DEC. PLACE +/-1.0mm OTHER ANGLES +/-1°
 ONE DEC. PLACE +/-0.3mm MACHINED DIAMETERS
 TWO DEC. PLACE +/-0.1mm CONCENTRIC WITHIN
 +/-0.1mm T.I.R.
 SCREW THREADS ARE ISO METRIC COARSE PITCH
 TOL. 6g/6H (MED. FIT) TO BS3643
 WIRE DIA./PLATE THICKNESS TO COMMERCIAL LIMITS
 GEOMETRICAL TOLERANCING TO BS308 PART 3



PERMISSIBLE MOUNTING ORIENTATION
 DEFAULT/STANDARD RESERVOIR VERTICAL. PREFERRED ORIENTATION



RESERVOIR HORIZONTAL UPON REQUEST
 REQUEST AT TIME OF ORDERING TO ACHIEVE FULL CAPACITY.
 RESERVOIR REQUIRES SEALING AND LEAK TESTING IN PRODUCTION.

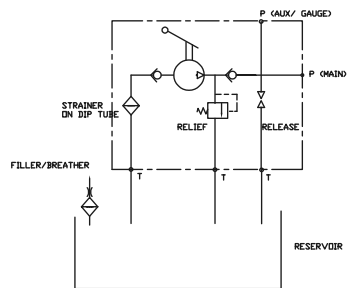
MEMO: HORIZONTAL MOUNT INLET KIT 303/BELRIN IS 001069400
 HORIZONTAL MOUNT INLET KIT 316/316 FILTER IS 001069500

DIMENSIONS RESERVOIR MR-F-A-02

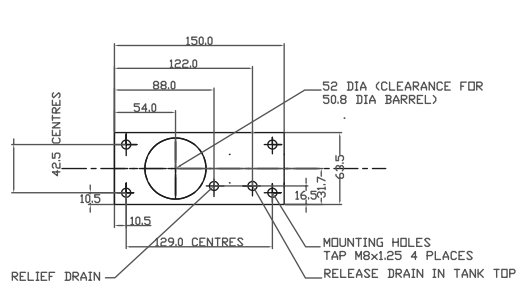
NOTES

1. MATERIALS OF CONSTRUCTION ANODISED AA10 ALUMINIUM ALLOY 5251 CAP POLYMER
2. ALL DIMENSIONS IN mm
3. MASS 1.3 KG DRY
4. USE DATA SHEET 001026300 FOR ORDERING CODES
5. ORDER PUMP AND RESERVOIR AS SEPARATE ITEMS
6. THE RESERVOIR IS NOT A PRESSURE VESSEL. IT MUST ALWAYS BE VENTED TO ATMOSPHERE. MAXIMUM INTERNAL PRESSURE 0.3 BARG
7. NOMINAL CAPACITY 2.5 LITRES (0.67USG)
8. HORIZONTAL MOUNTING AVAILABLE; PLEASE REQUEST AT TIME OF ORDER

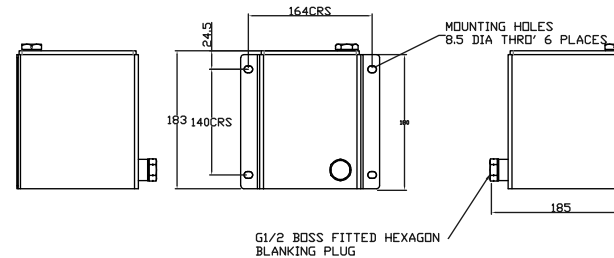
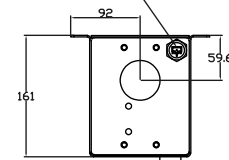
HYDRAULIC CIRCUIT FOR MICROPAC PUMP/RESERVOIR



MOUNTING FACE PLAN FOR MICROPAC RESERVOIR



1/2 HEXAGON FILLER BREATHER PLUG



UNLESS OTHERWISE STATED:
 DIMENSIONS IN MILLIMETRES
 SURFACE FINISH IN MICROMETRES
 REMOVE SHARP EDGES

© COPYRIGHT 2020 SARUM HYDRAULICS LTD.



SARUM HYDRAULICS LTD.

SALISBURY, SP4 6EB, UK
 www.sarum-hydraulics.co.uk

TITLE

INSTALLATION DRAWING PUMP/2.5 L ALLOY RESERVOIR

MATERIAL PER NOTE

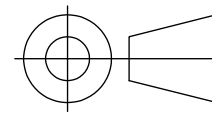
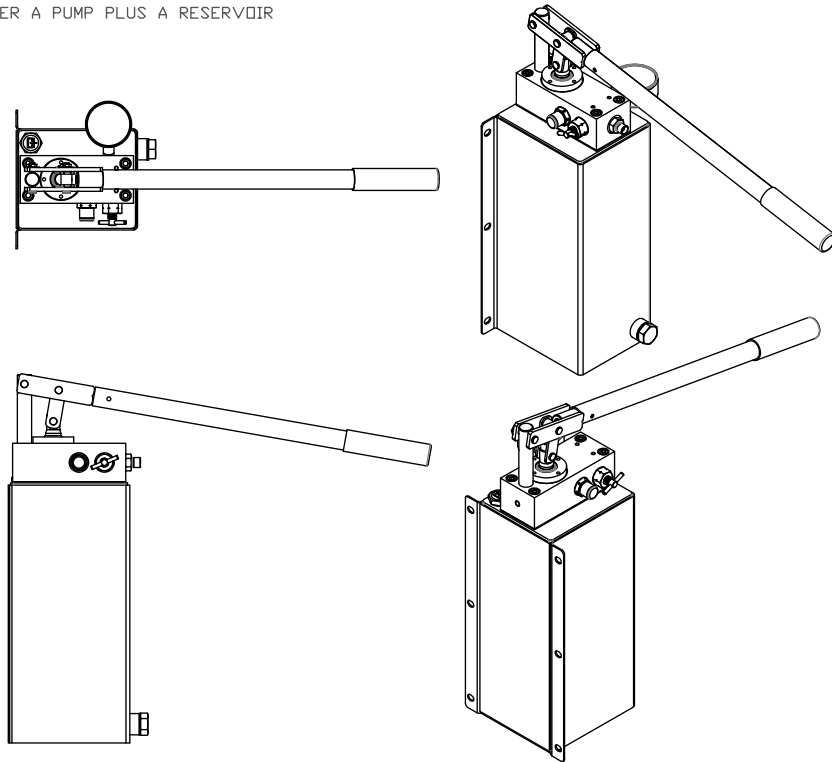
FINISH PER NOTE

DRAWN	JF	APP	
		CHKD	
SCALE	F	SIZE	SHEET OF
CAD	2-D	MR-F-A-02	
DRAWING NO.	MR-F-A-02		

ISSUE	D.C.N.	CHANGE DESCRIPTION & DATE	DATE IMPLEMENTED
2	2007261	REDRAWN FORM MODEL	07/20
1		FIRST ISSUE	01/07

IF IN DOUBT, ASK THIRD ANGLE PROJECTION

ILLUSTRATION OF MICROPAC MW PUMP MOUNTED ON RESERVOIR MR-F-A-05
ORDER A PUMP PLUS A RESERVOIR



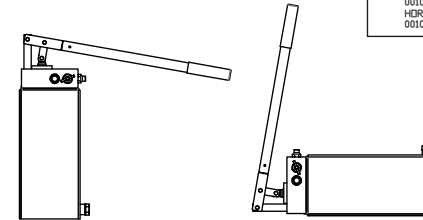
TOLERANCES UNLESS OTHERWISE STATED
GENERAL TOLERANCES RIGHT ANGLE BENDS &
NO DEC. PLACE +/-1.0mm OTHER ANGLES +/-1°
ONE DEC. PLACE +/-0.3mm MACHINED DIAMETERS
TWO DEC. PLACE +/-0.1mm CONCENTRIC WITHIN
+/-0.1mm T.I.R.
SCREW THREADS ARE ISO METRIC COARSE PITCH
TOL. 6g/6H (MED. FIT) TO BS3643
WIRE DIA./PLATE THICKNESS TO COMMERCIAL LIMITS
GEOMETRICAL TOLERANCING TO BS308 PART 3

PERMISSIBLE MOUNTING ORIENTATION

DEFAULT/STANDARD RESERVOIR VERTICAL. PREFERRED ORIENTATION

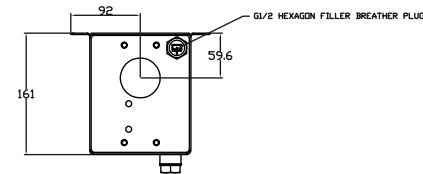
RESERVOIR HORIZONTAL MOUNTING UPON REQUEST
REQUEST AT TIME OF ORDERING TO ACHIEVE FULL CAPACITY.
RESERVOIR REQUIRES SEALING AND LEAK TESTING IN PRODUCTION.

MEMO HORIZONTAL MOUNT INLET KIT 303/DELKIN IS 01069400
HORIZONTAL MOUNT INLET KIT 316/316 FILTER IS 001069500



DIMENSIONS RESERVOIR MR-F-A-05

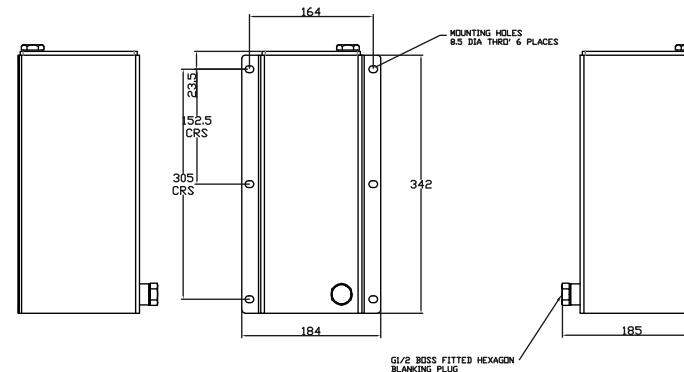
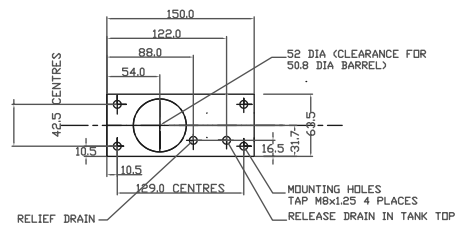
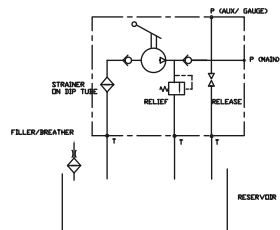
NOTES



1. MATERIALS OF CONSTRUCTION
NATURAL ANODISED AA10 ALUMINIUM ALLOY 5251
CAP POLYMER
2. ALL DIMENSIONS IN mm
3. MASS 1.8 KG DRY
4. USE DATA SHEET 001026300 FOR ORDERING CODES
5. ORDER PUMP AND RESERVOIR AS SEPARATE ITEMS
6. THE RESERVOIR IS NOT A PRESSURE VESSEL.
IT MUST ALWAYS BE VENTED TO ATMOSPHERE
MAXIMUM INTERNAL PRESSURE 0.3 BARG
7. NOMINAL CAPACITY 5 LITRES (1.3USG)
8. HORIZONTAL MOUNTING AVAILABLE; PLEASE REQUEST AT TIME OF ORDER

HYDRAULIC CIRCUIT FOR MICROPAC PUMP/RESERVOIR

MOUNTING FACE PLAN FOR MICROPAC RESERVOIR



UNLESS OTHERWISE STATED:
DIMENSIONS IN MILLIMETRES
SURFACE FINISH IN MICROMETRES
REMOVE SHARP EDGES

© COPYRIGHT 2020 SARUM HYDRAULICS LTD.



SARUM HYDRAULICS LTD.

SALISBURY, SP4 6EB, UK
www.sarum-hydraulics.co.uk

DRAWN	JF	APP
		CHKD
SCALE	F	SIZE
CAD	2-D	MR-F-A-05

TITLE
INSTALLATION DRAWING PUMP/5 L ALLOY RESERVOIR

DRAWING NO.
MR-F-A-05

MATERIAL PER NOTE
FINISH PER NOTE

ISSUE	D.C.N.	CHANGE DESCRIPTION & DATE	DATE IMPLEMENTED
4	2007211	UPDATED FROM MODEL	07/20
3	1101181	NEW PART NO. QUOTED	06/12
2	1101181	TITLE ERROR CORRECTED	01/11
1		FIRST ISSUE	01/07