

PSP Two Speed Hand Pump Index for drawings

What do we offer?

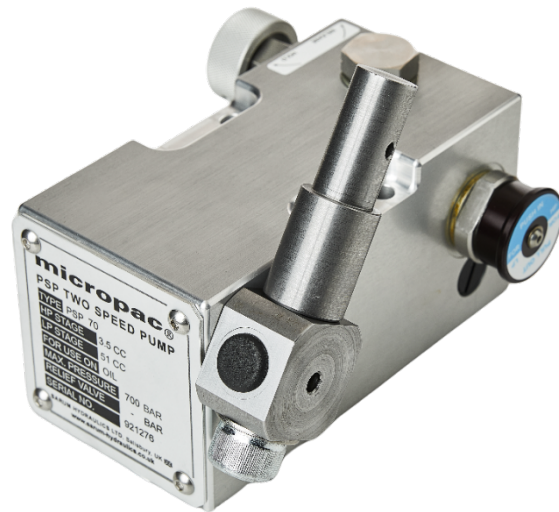
Our Micropac® PSP is a component hand pump which can be configured to suit your exact requirement. Single acting, two-speed operation up to 1000 bar, multi-fluid compatible with easy change seal kits.

For extra options, such as an automatic changeover valve, see pages 4 & 5.
For a banjo fitted 100mm pressure gauge, see page 3, 5 & 7.

These pumps can also be fitted to a 15 litre reservoir.
See page 8.

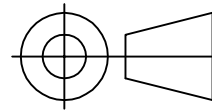
For ATEX / IECEx certified options, see our "MD-Ax" range of products for 316 stainless steel two-speed pumps.

For extra options such as 4-way directional valves or different reservoirs, consult the factory.

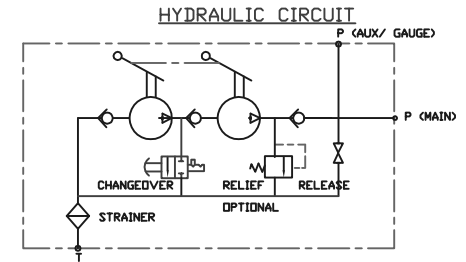
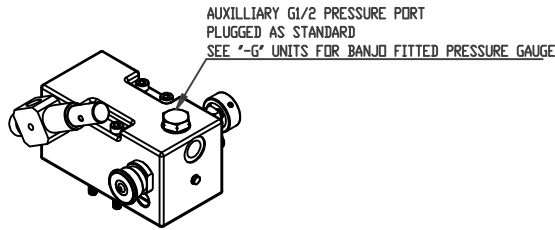
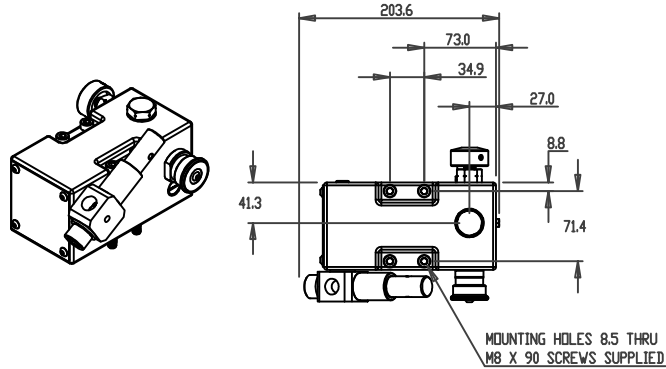


Page	Drawing Number	Description
2	PSP-XX-O-R-O-R	Available Pump Models: Pump alone - all models up to 700 bar (1/2BSP female outlets)
3	PSP-XX-O-R-G-R	Pump with gauge - all models up to 700bar (1/2BSP female outlet)
4	PSP-A-XX-O-R-O-R	Pump alone with automatic changeover valve (1/2BSP female outlets)
5	PSP-A-XX-O-R-G-R	Pump with gauge & automatic changeover valve (1/2BSP female outlets)
6	PSP-10-O-R-O-R	Pump alone - 1000bar model (3/8BSP outlets)
7	PSP-10-O-R-G-R	Pump with gauge - 1000bar model (3/8BSP outlet)
8	PSP-XX-15	Available Reservoirs: Code is for Reservoir alone, but order as part of the pump assembly per the ordering codes on the PSP Datasheet. See these drawings for the reservoir dimensions, and for an illustration of a pump mounted on the reservoir. 15 Litre Reservoir in 316 stainless steel for low corrosion

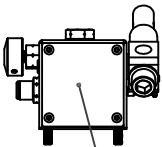
IF IN DOUBT, ASK THIRD ANGLE PROJECTION



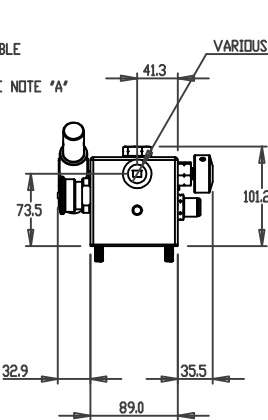
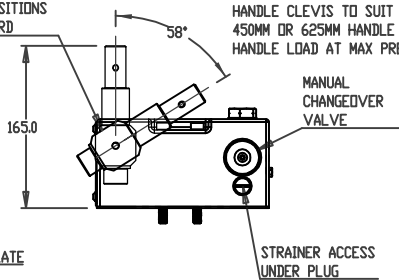
TOLERANCES UNLESS OTHERWISE STATED
 GENERAL TOLERANCES RIGHT ANGLE BENDS &
 NO DEC. PLACE +/-1.0mm OTHER ANGLES +/-1°
 ONE DEC. PLACE +/-0.3mm MACHINED DIAMETERS
 TWO DEC. PLACE +/-0.1mm CONCENTRIC WITHIN
 +/-0.1mm T.I.R.
 SCREW THREADS ARE ISO METRIC COARSE PITCH
 TOL. 6g/6h (MED. FIT) TO BS3643
 WIRE DIA./PLATE THICKNESS TO COMMERCIAL LIMITS
 GEOMETRICAL TOLERANCING TO BS308 PART 3



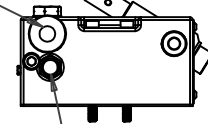
MULTIPLE OPTIONAL HANDLE POSITIONS ORIENTATION SHOWN IS STANDARD



IDENTIFICATION PLATE



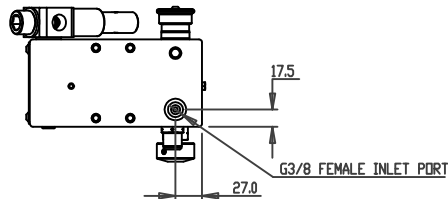
OPTIONAL HOLD/RELEASE VALVE WITH KNOB CAN BE BLANKED OFF - SEE ORDERING CODES



OPTIONAL ADJUSTABLE PRESSURE RELIEF VALVE CAN BE BLANKED OFF - SEE ORDERING CODES

NOTE *A*
 HANDLE LOAD AT MAX PRESSURE:

PSP-11, 110bar	= 514N w/ 450mm
	382N w/ 625mm
PSP-17, 170bar	= 508N w/ 450mm
	378N w/ 625mm
PSP-31, 310bar	= 521N w/ 450mm
	387N w/ 625mm
PSP-45, 450bar	= 526N w/ 450mm
	391N w/ 625mm
PSP-70, 700bar	= 523N w/ 450mm
	389N w/ 625mm



NOTES:

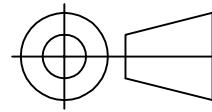
- THIS DRAWING COVERS ALL MODELS OF PSP APART FROM THE PSP-10, 1000BAR MODEL
- ALL MODELS HAVE LOW PRESSURE (LP) STAGE OF 51cc PER DOUBLE STROKE, UP TO 50BAR, FOLLOWED BY HIGH PRESSURE (HP) STAGE UP TO MAX PRESSURE OF PUMP MODEL, AS FOLLOWS
 PSP-11, 20.5CC / DOUBLE STROKE UP TO 110BAR
 PSP-17, 13.1CC / DOUBLE STROKE UP TO 170BAR
 PSP-31, 7.3CC / DOUBLE STROKE UP TO 310BAR
 PSP-45, 5.1CC / DOUBLE STROKE UP TO 450BAR
 PSP-70, 3.3CC / DOUBLE STROKE UP TO 700BAR
- MATERIALS OF CONSTRUCTION:
 ALUMINIUM ALLOY 6082T6 BODY BS1474
 STAINLESS STEEL 302,303,304,316,416,420,431
 INTERNALS BS970
 CARBON STEEL BRIGHT ZINC PLATED HANDLE MECHANISM
- INLET STRAINER FITTED
- POPPET TYPE OUTLET CHECK VALVE WITH REPLACEABLE SEAT
- CLEVIS FITTED, ARC OF MOVEMENT PER NOTE
- OPTIONAL ADJUSTABLE RELIEF VALVE PER NOTE
- OPTIONAL HOLD / RELEASE VALVE PER NOTE
- MANUAL CHANGEDOVER VALVE FROM LP TO HP OPERATION
- SEAL MATERIAL: NITRILE, PTFE, UHMWP STANDARD. OPTIONS INCLUDE VITON FLUOROCARBON AND EPDM
- TEMPERATURE RANGE -30 TO +80 DEG C
- MASS 7KG EXCL HANDLE. 625MM HANDLE 0.7KG
- SPECIFICATION MAY BE SUBJECT TO REVISION

UNLESS OTHERWISE STATED:
 DIMENSIONS IN MILLIMETRES
 SURFACE FINISH IN MICROMETRES
 REMOVE SHARP EDGES

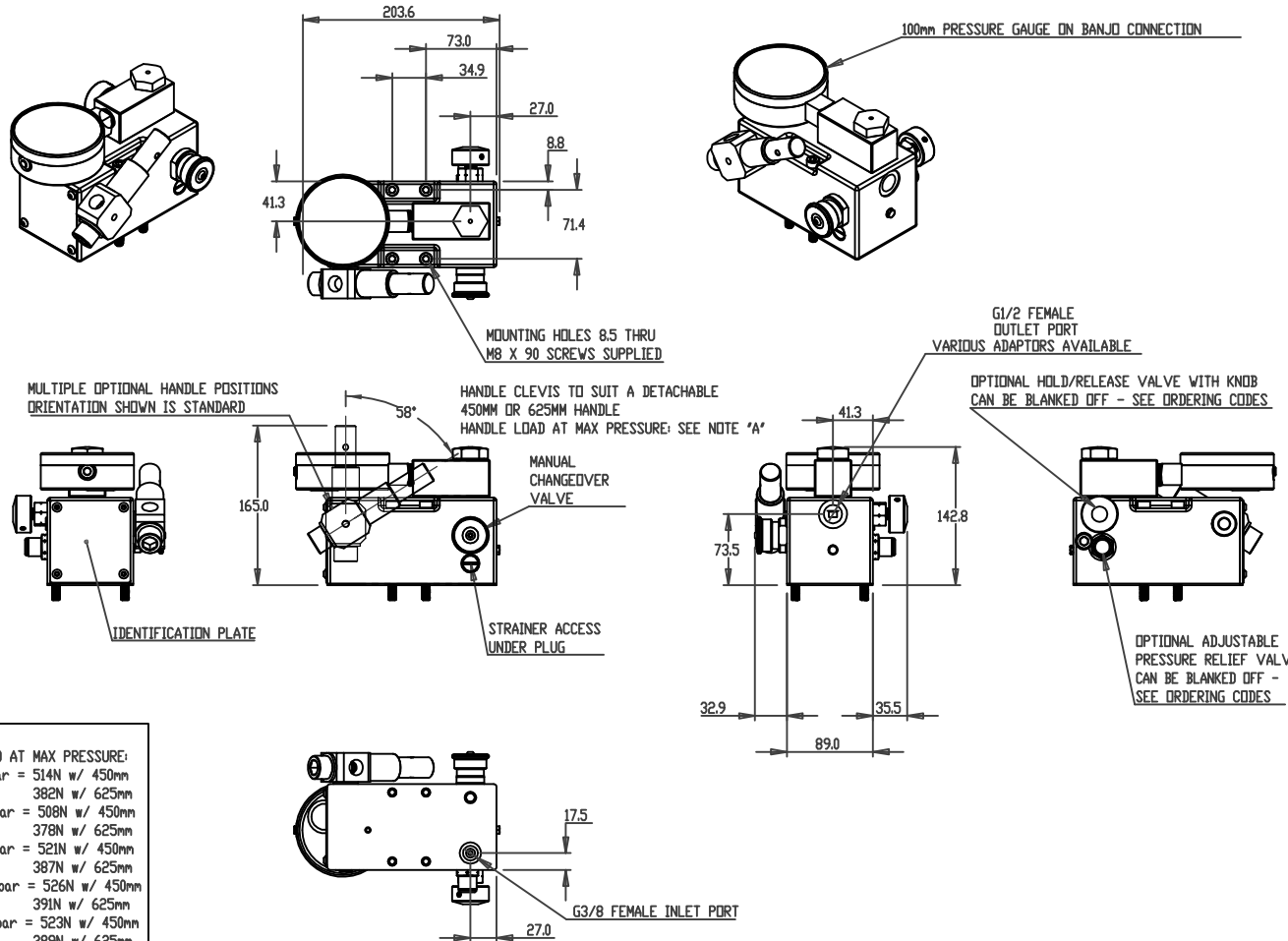
© COPYRIGHT 2023 SARUM HYDRAULICS LTD.

					SARUM HYDRAULICS LTD.		DRAWN	NATO	APP
					SALISBURY, SP4 6EB, UK www.sarum-hydraulics.co.uk				CHKD
				TITLE		SCALE		F	SIZE
				INST DRAWING: PSP TWO SPEED PUMP UP TO 700BAR		SHEET		OF	
				MATERIAL PER NOTES		CAD 2-D		PSP-XX-0-R-0-R	
				FINISH PER NOTES		DRAWING NO.		PSP-XX-0-R-0-R	
1		FIRST ISSUE	10/23						
ISSUE	D.C.N.	CHANGE DESCRIPTION & DATE	DATE IMPLEMENTED						

IF IN DOUBT, ASK THIRD ANGLE PROJECTION

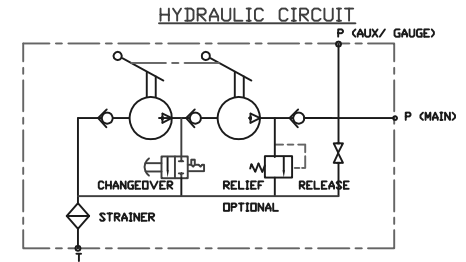


TOLERANCES UNLESS OTHERWISE STATED
 GENERAL TOLERANCES RIGHT ANGLE BENDS &
 NO DEC. PLACE +/-1.0mm OTHER ANGLES +/-1°
 ONE DEC. PLACE +/-0.3mm MACHINED DIAMETERS
 TWO DEC. PLACE +/-0.1mm CONCENTRIC WITHIN
 +/-0.1mm T.I.R.
 SCREW THREADS ARE ISO METRIC COARSE PITCH
 TOL. 6g/6h (MED. FIT) TO BS3643
 WIRE DIA./PLATE THICKNESS TO COMMERCIAL LIMITS
 GEOMETRICAL TOLERANCING TO BS308 PART 3



NOTE 'A'
 HANDLE LOAD AT MAX PRESSURE:
 PSP-11, 110bar = 514N w/ 450mm
 382N w/ 625mm
 PSP-17, 170bar = 508N w/ 450mm
 378N w/ 625mm
 PSP-31, 310bar = 521N w/ 450mm
 387N w/ 625mm
 PSP-45, 450bar = 526N w/ 450mm
 391N w/ 625mm
 PSP-70, 700bar = 523N w/ 450mm
 389N w/ 625mm

UNLESS OTHERWISE STATED:
 DIMENSIONS IN MILLIMETRES
 SURFACE FINISH IN MICROMETRES
 REMOVE SHARP EDGES



NOTES:

- THIS DRAWING COVERS ALL MODELS OF PSP APART FROM THE PSP-10, 1000BAR MODEL
- ALL MODELS HAVE LOW PRESSURE (LP) STAGE OF 51cc PER DOUBLE STROKE, UP TO 50BAR, FOLLOWED BY HIGH PRESSURE (HP) STAGE UP TO MAX PRESSURE OF PUMP MODEL, AS FOLLOWS
 PSP-11, 20.5CC / DOUBLE STROKE UP TO 110BAR
 PSP-17, 13.1CC / DOUBLE STROKE UP TO 170BAR
 PSP-31, 7.3CC / DOUBLE STROKE UP TO 310BAR
 PSP-45, 5.1CC / DOUBLE STROKE UP TO 450BAR
 PSP-70, 3.3CC / DOUBLE STROKE UP TO 700BAR
- MATERIALS OF CONSTRUCTION:
 ALUMINIUM ALLOY 6082T6 BODY BS1474
 STAINLESS STEEL 302,303,304,316,416,420,431
 INTERNALS BS970
 CARBON STEEL BRIGHT ZINC PLATED HANDLE MECHANISM
- INLET STRAINER FITTED
- POPPET TYPE OUTLET CHECK VALVE WITH REPLACEABLE SEAT
- CLEVIS FITTED, ARC OF MOVEMENT PER NOTE
- OPTIONAL ADJUSTABLE RELIEF VALVE PER NOTE
- OPTIONAL HOLD / RELEASE VALVE PER NOTE
- MANUAL CHANGEDOVER VALVE FROM LP TO HP OPERATION
- SEAL MATERIAL: NITRILE, PTFE, UHMWP STANDARD. OPTIONS INCLUDE VITON FLUOROCARBON AND EPDM
- TEMPERATURE RANGE -30 TO +80 DEG C
- MASS 7KG EXCL HANDLE. 625MM HANDLE 0.7KG
- SPECIFICATION MAY BE SUBJECT TO REVISION

© COPYRIGHT 2023 SARUM HYDRAULICS LTD.



SARUM HYDRAULICS LTD.

SALISBURY, SP4 6EB, UK
 www.sarum-hydraulics.co.uk

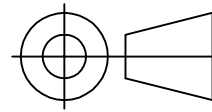
TITLE
 INST DRAWING: PSP TWO SPEED PUMP UP TO 700BAR WITH GAUGE

DRAWN	NATO	APP
		CHKD
SCALE	F	SIZE SHEET OF
CAD	2-D	PSP-XX-0-R-G-R
DRAWING NO.	PSP-XX-0-R-G-R	

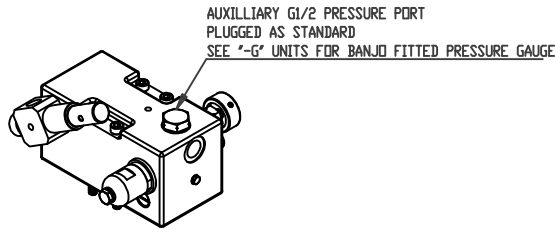
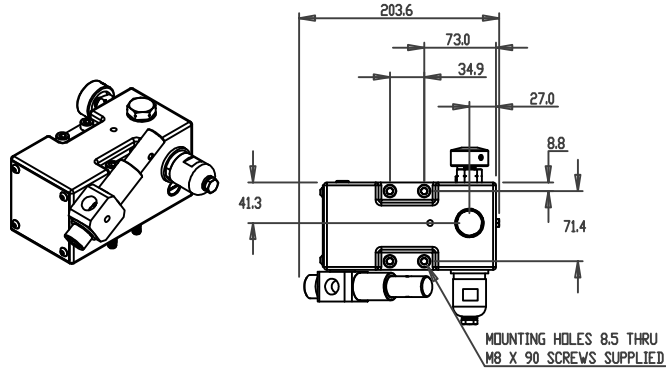
1	FIRST ISSUE	10/23
ISSUE	D.C.N.	CHANGE DESCRIPTION & DATE
		DATE IMPLEMENTED

MATERIAL PER NOTES
 FINISH PER NOTES

IF IN DOUBT, ASK THIRD ANGLE PROJECTION



TOLERANCES UNLESS OTHERWISE STATED
 GENERAL TOLERANCES RIGHT ANGLE BENDS &
 NO DEC. PLACE +/-1.0mm OTHER ANGLES +/-1°
 ONE DEC. PLACE +/-0.3mm MACHINED DIAMETERS
 TWO DEC. PLACE +/-0.1mm CONCENTRIC WITHIN
 +/-0.1mm T.I.R.
 SCREW THREADS ARE ISO METRIC COARSE PITCH
 TOL. 6g/6H (MED. FIT) TO BS3643
 WIRE DIA./PLATE THICKNESS TO COMMERCIAL LIMITS
 GEOMETRICAL TOLERANCING TO BS308 PART 3



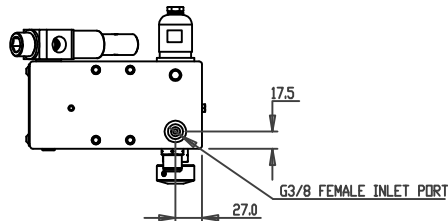
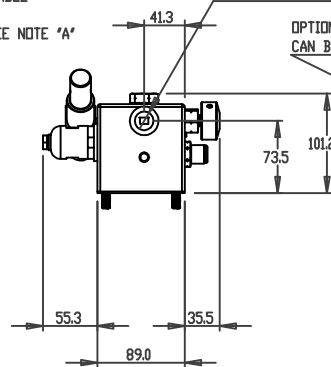
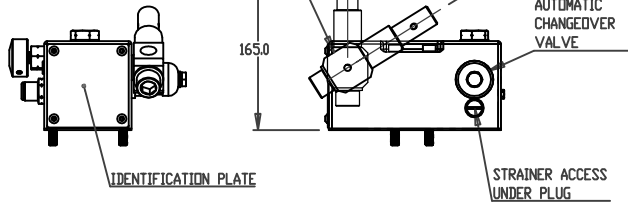
MULTIPLE OPTIONAL HANDLE POSITIONS ORIENTATION SHOWN IS STANDARD

HANDLE CLEVIS TO SUIT A DETACHABLE 450MM OR 625MM HANDLE HANDLE LOAD AT MAX PRESSURE: SEE NOTE 'A'

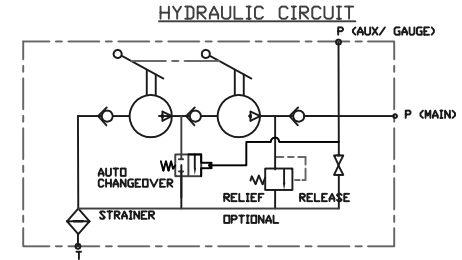
G1/2 FEMALE OUTLET PORT VARIOUS ADAPTORS AVAILABLE

OPTIONAL HOLD/RELEASE VALVE WITH KNOB CAN BE BLANKED OFF - SEE ORDERING CODES

OPTIONAL ADJUSTABLE PRESSURE RELIEF VALVE CAN BE BLANKED OFF - SEE ORDERING CODES



NOTE 'A'	
HANDLE LOAD AT MAX PRESSURE:	
PSP-11, 110bar =	514N w/ 450mm
	382N w/ 625mm
PSP-17, 170bar =	508N w/ 450mm
	378N w/ 625mm
PSP-31, 310bar =	521N w/ 450mm
	387N w/ 625mm
PSP-45, 450bar =	526N w/ 450mm
	391N w/ 625mm
PSP-70, 700bar =	523N w/ 450mm
	389N w/ 625mm



NOTES:

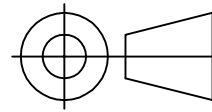
- THIS DRAWING COVERS ALL MODELS OF PSP APART FROM THE PSP-10, 1000BAR MODEL
- ALL MODELS HAVE LOW PRESSURE (LP) STAGE OF 51cc PER DOUBLE STROKE, UP TO 50BAR, FOLLOWED BY HIGH PRESSURE (HP) STAGE UP TO MAX PRESSURE OF PUMP MODEL, AS FOLLOWS
 PSP-11, 20.5CC / DOUBLE STROKE UP TO 110BAR
 PSP-17, 13.1CC / DOUBLE STROKE UP TO 170BAR
 PSP-31, 7.3CC / DOUBLE STROKE UP TO 310BAR
 PSP-45, 5.1CC / DOUBLE STROKE UP TO 450BAR
 PSP-70, 3.3CC / DOUBLE STROKE UP TO 700BAR
- MATERIALS OF CONSTRUCTION:
 ALUMINIUM ALLOY 6082T6 BODY BS1474
 STAINLESS STEEL 302,303,304,316,416,420,431
 INTERNALS BS970
 CARBON STEEL BRIGHT ZINC PLATED HANDLE MECHANISM
- INLET STRAINER FITTED
- POPPET TYPE OUTLET CHECK VALVE WITH REPLACEABLE SEAT
- CLEVIS FITTED, ARC OF MOVEMENT PER NOTE
- OPTIONAL ADJUSTABLE RELIEF VALVE PER NOTE
- OPTIONAL HOLD / RELEASE VALVE PER NOTE
- AUTOMATIC CHANGEDOVER VALVE FROM LP TO HP OPERATION
- SEAL MATERIAL: NITRILE, PTFE, UHMWP STANDARD. OPTIONS INCLUDE VITON FLUOROCARBON AND EPDM
- TEMPERATURE RANGE -30 TO +80 DEG C
- MASS 7KG EXCL HANDLE. 625MM HANDLE 0.7KG
- SPECIFICATION MAY BE SUBJECT TO REVISION

UNLESS OTHERWISE STATED:
 DIMENSIONS IN MILLIMETRES
 SURFACE FINISH IN MICROMETRES
 REMOVE SHARP EDGES

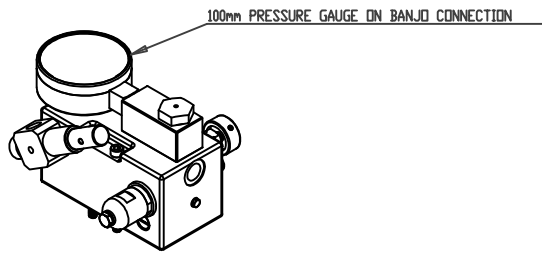
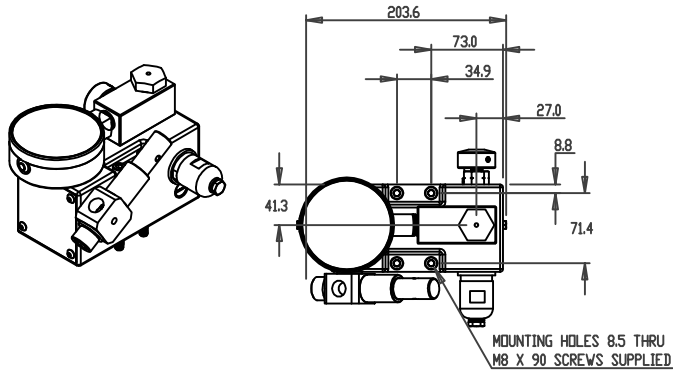
© COPYRIGHT 2023 SARUM HYDRAULICS LTD.

					SARUM HYDRAULICS LTD.		DRAWN	NATO	APP
					SALISBURY, SP4 6EB, UK www.sarum-hydraulics.co.uk				CHKD
				TITLE		SCALE		F	SIZE
				INST DRAWING: PSP AUTO CHANGEDOVER PUMP UP TO 700BAR		SHEET		OF	
				MATERIAL PER NOTES		CAD 2-D		PSP-A-XX-0-R-0-R	
				FINISH PER NOTES		DRAWING NO.		PSP-A-XX-0-R-0-R	
1		FIRST ISSUE	11/23						
ISSUE	D.C.N.	CHANGE DESCRIPTION & DATE	DATE IMPLEMENTED						

IF IN DOUBT, ASK THIRD ANGLE PROJECTION



TOLERANCES UNLESS OTHERWISE STATED
 GENERAL TOLERANCES RIGHT ANGLE BENDS &
 NO DEC. PLACE +/-1.0mm OTHER ANGLES +/-1°
 ONE DEC. PLACE +/-0.3mm MACHINED DIAMETERS
 TWO DEC. PLACE +/-0.1mm CONCENTRIC WITHIN
 +/-0.1mm T.I.R.
 SCREW THREADS ARE ISO METRIC COARSE PITCH
 TOL. 6g/6H (MED. FIT) TO BS3643
 WIRE DIA./PLATE THICKNESS TO COMMERCIAL LIMITS
 GEOMETRICAL TOLERANCING TO BS308 PART 3

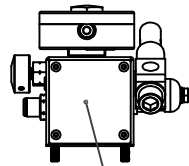


MULTIPLE OPTIONAL HANDLE POSITIONS
 ORIENTATION SHOWN IS STANDARD

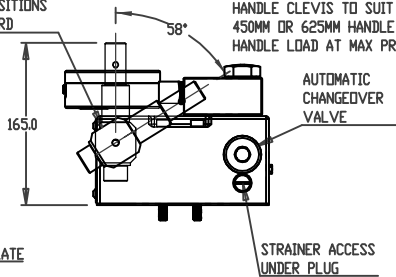
HANDLE CLEVIS TO SUIT A DETACHABLE
 450MM OR 625MM HANDLE
 HANDLE LOAD AT MAX PRESSURE: SEE NOTE 'A'

G1/2 FEMALE
 OUTLET PORT
 VARIOUS ADAPTORS AVAILABLE

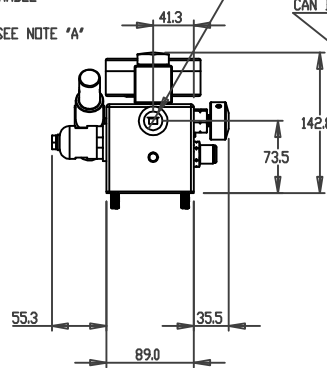
OPTIONAL HOLD/RELEASE VALVE WITH KNOB
 CAN BE BLANKED OFF - SEE ORDERING CODES



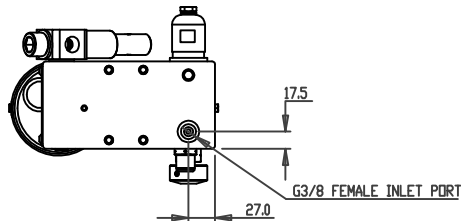
IDENTIFICATION PLATE



STRAINER ACCESS
 UNDER PLUG

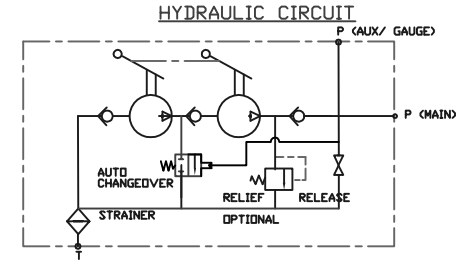


OPTIONAL ADJUSTABLE
 PRESSURE RELIEF VALVE
 CAN BE BLANKED OFF -
 SEE ORDERING CODES



NOTE 'A'	
HANDLE LOAD AT MAX PRESSURE:	
PSP-11, 110bar	= 514N w/ 450mm 382N w/ 625mm
PSP-17, 170bar	= 508N w/ 450mm 378N w/ 625mm
PSP-31, 310bar	= 521N w/ 450mm 387N w/ 625mm
PSP-45, 450bar	= 526N w/ 450mm 391N w/ 625mm
PSP-70, 700bar	= 523N w/ 450mm 389N w/ 625mm

UNLESS OTHERWISE STATED:
 DIMENSIONS IN MILLIMETRES
 SURFACE FINISH IN MICROMETRES
 REMOVE SHARP EDGES



NOTES:

- THIS DRAWING COVERS ALL MODELS OF PSP APART FROM THE PSP-10, 1000BAR MODEL
- ALL MODELS HAVE LOW PRESSURE (LP) STAGE OF 51cc PER DOUBLE STROKE, UP TO 50BAR, FOLLOWED BY HIGH PRESSURE (HP) STAGE UP TO MAX PRESSURE OF PUMP MODEL, AS FOLLOWS
 PSP-11, 20.5CC / DOUBLE STROKE UP TO 110BAR
 PSP-17, 13.1CC / DOUBLE STROKE UP TO 170BAR
 PSP-31, 7.3CC / DOUBLE STROKE UP TO 310BAR
 PSP-45, 5.1CC / DOUBLE STROKE UP TO 450BAR
 PSP-70, 3.3CC / DOUBLE STROKE UP TO 700BAR
- MATERIALS OF CONSTRUCTION:
 ALUMINIUM ALLOY 6082T6 BODY BS1474
 STAINLESS STEEL 302,303,304,316,416,420,431
 INTERNALS BS970
 CARBON STEEL BRIGHT ZINC PLATED HANDLE MECHANISM
- INLET STRAINER FITTED
- POPPET TYPE OUTLET CHECK VALVE WITH REPLACEABLE SEAT
- CLEVIS FITTED, ARC OF MOVEMENT PER NOTE
- OPTIONAL ADJUSTABLE RELIEF VALVE PER NOTE
- OPTIONAL HOLD / RELEASE VALVE PER NOTE
- AUTOMATIC CHANGEDOVER VALVE FROM LP TO HP OPERATION
- SEAL MATERIAL: NITRILE, PTFE, UHMWP STANDARD. OPTIONS INCLUDE VITON FLUOROCARBON AND EPDM
- TEMPERATURE RANGE -30 TO +80 DEG C
- MASS 7KG EXCL HANDLE. 625MM HANDLE 0.7KG
- SPECIFICATION MAY BE SUBJECT TO REVISION

© COPYRIGHT 2023 SARUM HYDRAULICS LTD.



SARUM HYDRAULICS LTD.

SALISBURY, SP4 6EB, UK
 www.sarum-hydraulics.co.uk

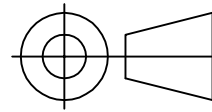
TITLE
 INST DRAWING: PSP AUTO CHANGEDOVER PUMP UP TO 700BAR WITH GAUGE

DRAWN	NATO	APP
		CHKD
SCALE	F	SIZE SHEET OF
CAD	2-D	PSP-A-XX-0-R-G-R
DRAWING NO.	PSP-A-XX-0-R-G-R	

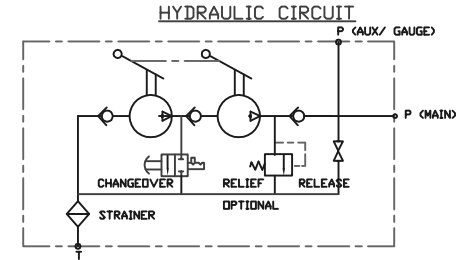
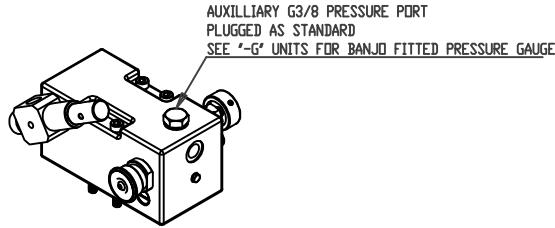
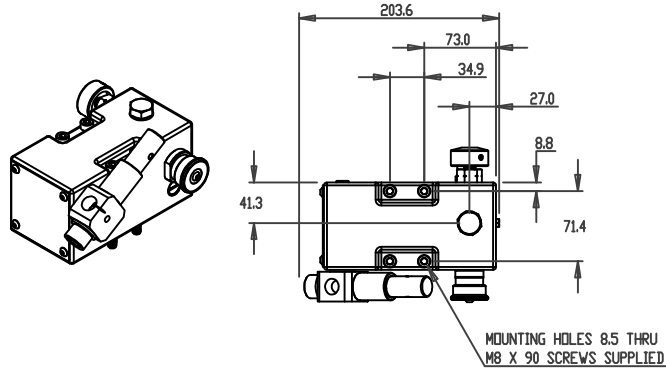
1	FIRST ISSUE	11/23
ISSUE	D.C.N.	CHANGE DESCRIPTION & DATE
		DATE IMPLEMENTED

MATERIAL PER NOTES
 FINISH PER NOTES

IF IN DOUBT, ASK THIRD ANGLE PROJECTION



TOLERANCES UNLESS OTHERWISE STATED
 GENERAL TOLERANCES RIGHT ANGLE BENDS &
 NO DEC. PLACE +/-1.0mm OTHER ANGLES +/-1°
 ONE DEC. PLACE +/-0.3mm MACHINED DIAMETERS
 TWO DEC. PLACE +/-0.1mm CONCENTRIC WITHIN
 +/-0.1mm T.I.R.
 SCREW THREADS ARE ISO METRIC COARSE PITCH
 TOL. 6g/6H (MED. FIT) TO BS3643
 WIRE DIA./PLATE THICKNESS TO COMMERCIAL LIMITS
 GEOMETRICAL TOLERANCING TO BS308 PART 3



MULTIPLE OPTIONAL HANDLE POSITIONS ORIENTATION SHOWN IS STANDARD

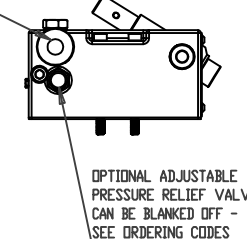
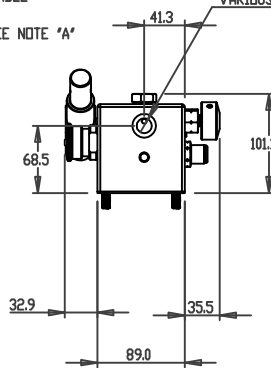
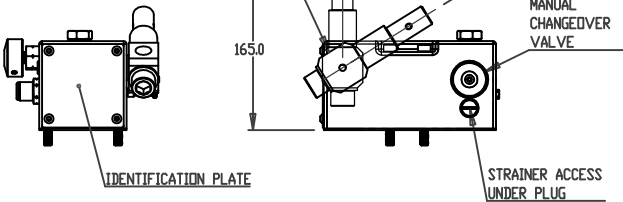
HANDLE CLEVIS TO SUIT A DETACHABLE 450MM OR 625MM HANDLE HANDLE LOAD AT MAX PRESSURE: SEE NOTE 'A'

G3/8 FEMALE OUTLET PORT VARIOUS ADAPTORS AVAILABLE

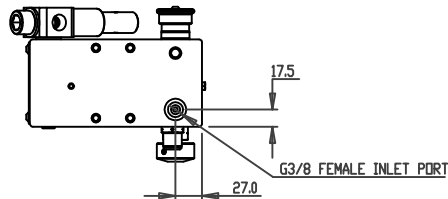
OPTIONAL HOLD/RELEASE VALVE WITH KNOB CAN BE BLANKED OFF - SEE ORDERING CODES

NOTES:

- THIS DRAWING IS SPECIFIC TO THE PSP-10, 1000BAR MODEL.
- THIS MODEL HAS A LOW PRESSURE (LP) STAGE OF 51cc PER DOUBLE STROKE, UP TO 50BAR, FOLLOWED BY HIGH PRESSURE (HP) STAGE: PSP-10, 2,2CC / DOUBLE STROKE UP TO 1000BAR
- MATERIALS OF CONSTRUCTION:
 ALUMINIUM ALLOY 6082T6 BODY BS1474
 STAINLESS STEEL 302,303,304,316,416,420,431
 INTERNALS BS970
 CARBON STEEL BRIGHT ZINC PLATED HANDLE MECHANISM
- INLET STRAINER FITTED
- POPPET TYPE OUTLET CHECK VALVE WITH REPLACEABLE SEAT
- CLEVIS FITTED, ARC OF MOVEMENT PER NOTE
- OPTIONAL ADJUSTABLE RELIEF VALVE PER NOTE
- OPTIONAL HOLD / RELEASE VALVE PER NOTE
- MANUAL CHANGEDOVER VALVE FROM LP TO HP OPERATION
- SEAL MATERIAL: NITRILE, PTFE, UHMWP STANDARD. OPTIONS INCLUDE VITON FLUOROCARBON AND EPDM
- TEMPERATURE RANGE -30 TO +80 DEG C
- MASS 7KG EXCL HANDLE. 625MM HANDLE 0.7KG
- SPECIFICATION MAY BE SUBJECT TO REVISION



NOTE 'A'
 HANDLE LOAD AT MAX PRESSURE:
 PSP-10, 1000bar = 572N w/ 450mm
 425N w/ 625mm



UNLESS OTHERWISE STATED:
 DIMENSIONS IN MILLIMETRES
 SURFACE FINISH IN MICROMETRES
 REMOVE SHARP EDGES

© COPYRIGHT 2023 SARUM HYDRAULICS LTD.



SARUM HYDRAULICS LTD.

SALISBURY, SP4 6EB, UK
 www.sarum-hydraulics.co.uk

TITLE
INST DRAWING: PSP TWO SPEED PUMP 1000BAR

DRAWN NATO APP

CHKD

SCALE F SIZE SHEET OF

CAD 2-D PSP-10-0-R-0-R

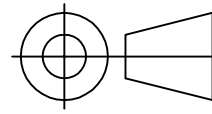
DRAWING NO.

PSP-10-0-R-0-R

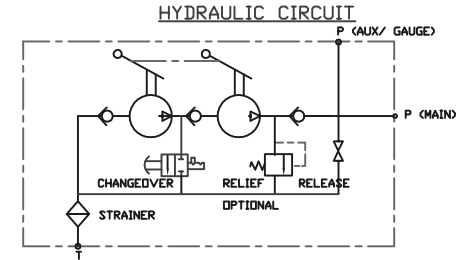
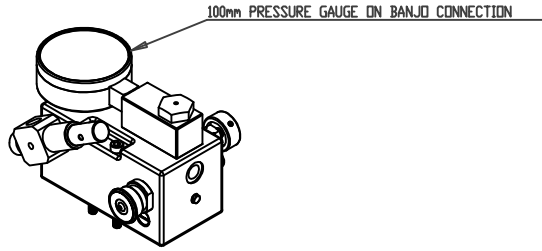
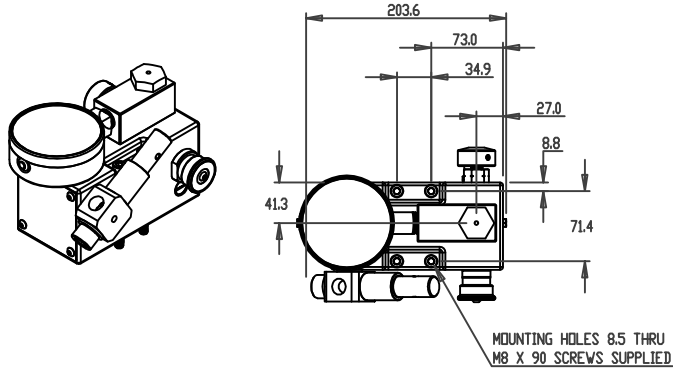
1	FIRST ISSUE	10/23
ISSUE	D.C.N.	CHANGE DESCRIPTION & DATE
		DATE IMPLEMENTED

MATERIAL PER NOTES
 FINISH PER NOTES

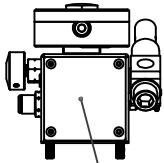
IF IN DOUBT, ASK THIRD ANGLE PROJECTION



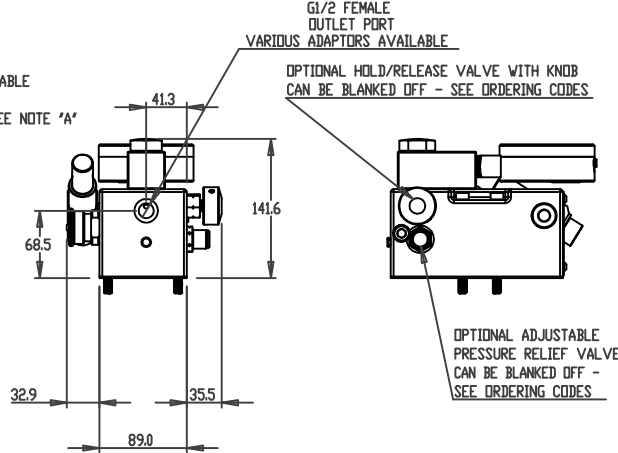
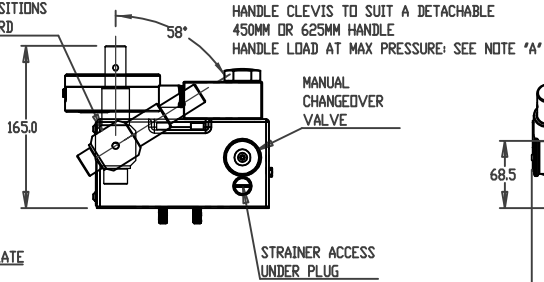
TOLERANCES UNLESS OTHERWISE STATED
 GENERAL TOLERANCES RIGHT ANGLE BENDS &
 NO DEC. PLACE +/-1.0mm OTHER ANGLES +/-1°
 ONE DEC. PLACE +/-0.3mm MACHINED DIAMETERS
 TWO DEC. PLACE +/-0.1mm CONCENTRIC WITHIN
 +/-0.1mm T.I.R.
 SCREW THREADS ARE ISO METRIC COARSE PITCH
 TOL. 6g/6H (MED. FIT) TO BS3643
 WIRE DIA./PLATE THICKNESS TO COMMERCIAL LIMITS
 GEOMETRICAL TOLERANCING TO BS308 PART 3



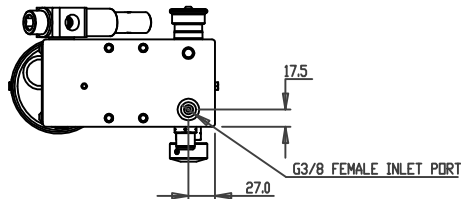
MULTIPLE OPTIONAL HANDLE POSITIONS
 ORIENTATION SHOWN IS STANDARD



IDENTIFICATION PLATE



NOTE 'A'
 HANDLE LOAD AT MAX PRESSURE:
 PSP-10, 1000bar = 572N w/ 450mm
 425N w/ 625mm



NOTES:

- 1) THIS DRAWING IS SPECIFIC TO THE PSP-10, 1000BAR MODEL.
- 2) THIS MODEL HAS A LOW PRESSURE (LP) STAGE OF 51cc PER DOUBLE STROKE, UP TO 50BAR, FOLLOWED BY HIGH PRESSURE (HP) STAGE: PSP-10, 2,2CC / DOUBLE STROKE UP TO 1000BAR
- 3) MATERIALS OF CONSTRUCTION:
 ALUMINIUM ALLOY 6082T6 BODY BS1474
 STAINLESS STEEL 302,303,304,316,416,420,431
 INTERNALS BS970
 CARBON STEEL BRIGHT ZINC PLATED HANDLE MECHANISM
- 4) INLET STRAINER FITTED
- 5) POPPET TYPE OUTLET CHECK VALVE WITH REPLACEABLE SEAT
- 6) CLEVIS FITTED, ARC OF MOVEMENT PER NOTE
- 7) OPTIONAL ADJUSTABLE RELIEF VALVE PER NOTE
- 8) OPTIONAL HOLD / RELEASE VALVE PER NOTE
- 9) MANUAL CHANGEDOVER VALVE FROM LP TO HP OPERATION
- 10) SEAL MATERIAL: NITRILE, PTFE, UHMWP STANDARD. OPTIONS INCLUDE VITON FLUOROCARBON AND EPDM
- 11) TEMPERATURE RANGE -30 TO +80 DEG C
- 12) MASS 7KG EXCL HANDLE. 625MM HANDLE 0.7KG
- 13) SPECIFICATION MAY BE SUBJECT TO REVISION

UNLESS OTHERWISE STATED:
 DIMENSIONS IN MILLIMETRES
 SURFACE FINISH IN MICROMETRES
 REMOVE SHARP EDGES

© COPYRIGHT 2023 SARUM HYDRAULICS LTD.



SARUM HYDRAULICS LTD.

SALISBURY, SP4 6EB, UK
 www.sarum-hydraulics.co.uk

TITLE
 INST DRAWING: PSP TWO SPEED PUMP 1000BAR WITH GAUGE

DRAWN NATO APP

CHKD

SCALE F SIZE SHEET OF

CAD 2-D PSP-10-0-R-G-R

DRAWING NO.

PSP-10-0-R-G-R

1	FIRST ISSUE	10/23
ISSUE	D.C.N.	CHANGE DESCRIPTION & DATE
		DATE IMPLEMENTED

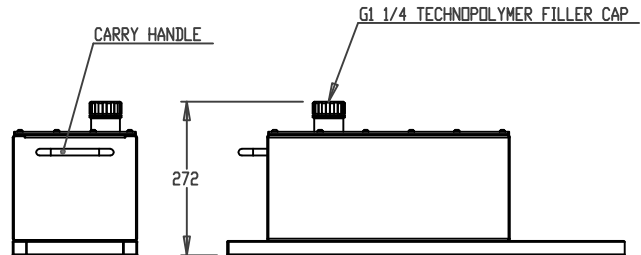
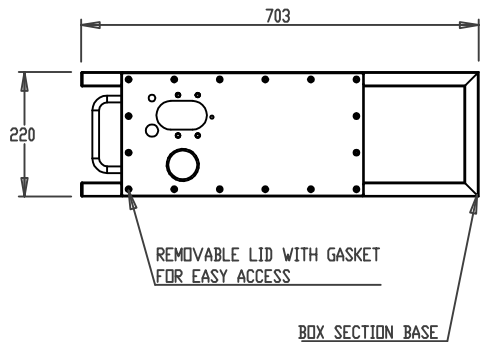
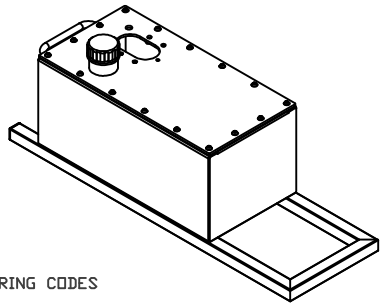
MATERIAL PER NOTES
 FINISH PER NOTES

IF IN DOUBT, ASK THIRD ANGLE PROJECTION

TOLERANCES UNLESS OTHERWISE STATED
 GENERAL TOLERANCES RIGHT ANGLE BENDS &
 NO DEC. PLACE +/-1.0mm OTHER ANGLES +/-1°
 ONE DEC. PLACE +/-0.3mm MACHINED DIAMETERS
 TWO DEC. PLACE +/-0.1mm CONCENTRIC WITHIN
 +/-0.1mm T.I.R.
 SCREW THREADS ARE ISO METRIC COARSE PITCH
 TOL. 6g/6H (MED. FIT) TO BS3643
 WIRE DIA./PLATE THICKNESS TO COMMERCIAL LIMITS
 GEOMETRICAL TOLERANCING TO BS308 PART 3

NOTES

1. MATERIALS OF CONSTRUCTION
 316 STAINLESS 1.4404
 CAP POLYMER
2. ALL DIMENSIONS IN mm
3. MASS 11 KG DRY
4. USE DATA SHEET 479001800 FOR ORDERING CODES
5. ORDER PUMP AND RESERVOIR TOGETHER PER ORDERING CODES
6. THE RESERVOIR IS NOT A PRESSURE VESSEL.
 IT MUST ALWAYS BE VENTED TO ATMOSPHERE
 MAXIMUM INTERNAL PRESSURE 0.3 BARG
7. NOMINAL CAPACITY 15 LITRES (4.0USG)



UNLESS OTHERWISE STATED:
 DIMENSIONS IN MILLIMETRES
 SURFACE FINISH IN MICROMETRES
 REMOVE SHARP EDGES

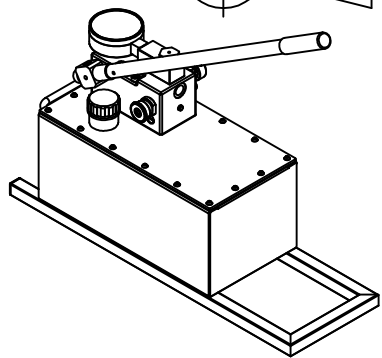
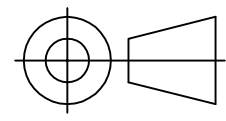
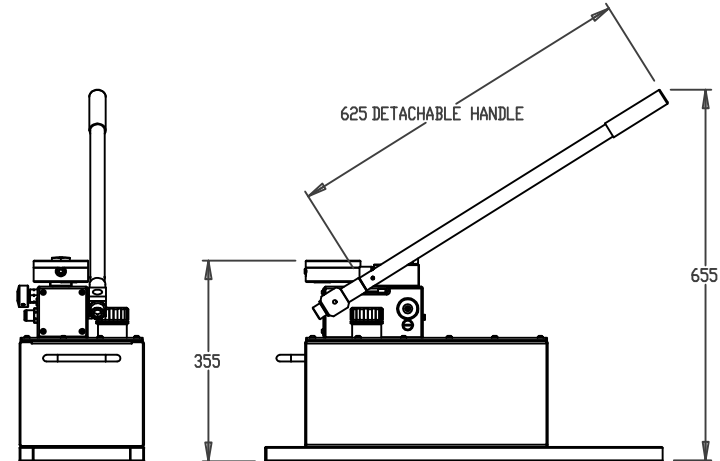
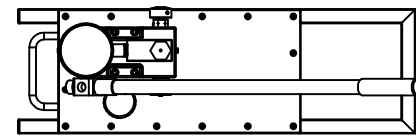


ILLUSTRATION OF TYPICAL PSP PUMP ON RESERVOIR



© COPYRIGHT 2023 SARUM HYDRAULICS LTD.

1	FIRST ISSUE	10/23	MATERIAL PER NOTE
ISSUE	D.C.N.	CHANGE DESCRIPTION & DATE	DATE IMPLEMENTED

	SARUM HYDRAULICS LTD. SALISBURY, SP4 6EB, UK www.sarum-hydraulics.co.uk		DRAWN	NATO	APP
	TITLE INSTALLATION DRAWING PUMP/15L PSP RESERVOIR		SCALE	F	SIZE
MATERIAL PER NOTE		SHEET OF		CAD 2-D PSP-XX-15	
FINISH PER NOTE		DRAWING NO.		PSP-XX-15	