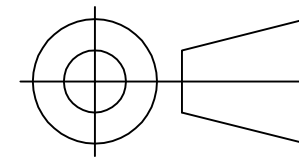
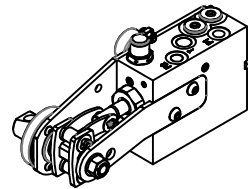
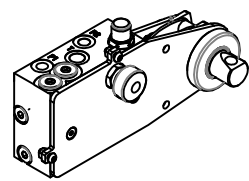


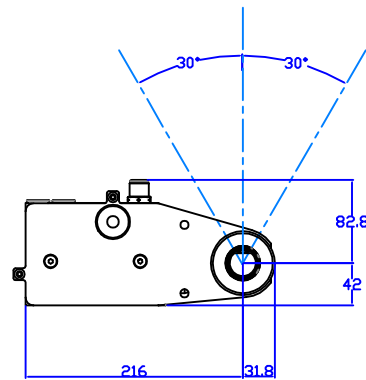
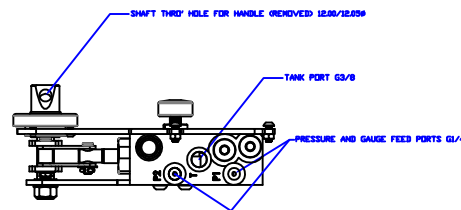
IF IN DOUBT, ASK THIRD ANGLE PROJECTION



TOLERANCES UNLESS OTHERWISE STATED
 GENERAL TOLERANCES RIGHT ANGLE BENDS & NO DEC. PLACE +/-1.0mm OTHER ANGLES +/-1°
 ONE DEC. PLACE +/-0.3mm MACHINED DIAMETERS
 TWO DEC. PLACE +/-0.1mm CONCENTRIC WITHIN +/-0.1mm T.I.R.
 SCREW THREADS ARE ISO METRIC COARSE PITCH
 TOL. 6g/6H (MED. FIT) TO BS3643
 WIRE DIA./PLATE THICKNESS TO COMMERCIAL LIMITS
 GEOMETRICAL TOLERANCING TO BS308 PART 3

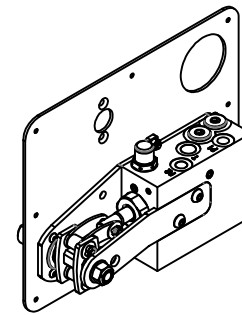
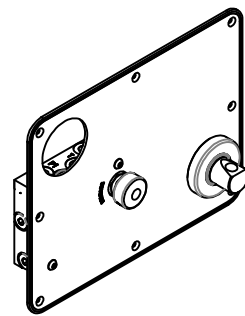
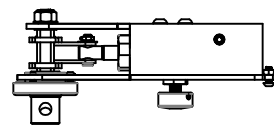
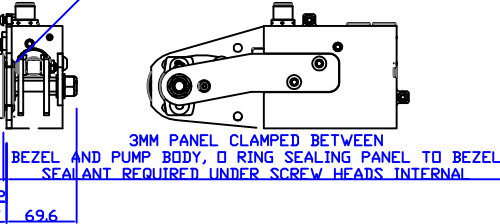


HANDLE REMOVED FOR CLARITY



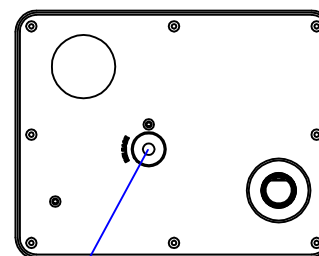
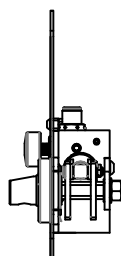
10° CANTED HANDLE

3 OFF M6 SCREWS CLAMP SARUM PUMP /PANEL/BEZEL PUMP & BEZEL SARUM, CUSTOMER PANEL AND FITTED BY CUSTOMER. EASY ACCESS THROUGH MECHANISM TO FIT AND TIGHTEN 3 SCREWS. APPLY SEALANT UNDER SCREW HEADS TO SEAL.

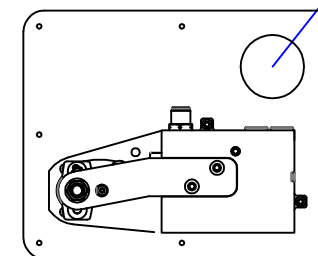
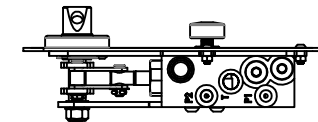


HANDLE REMOVED FOR CLARITY

CUSTOMER FITS THEIR OWN PANEL



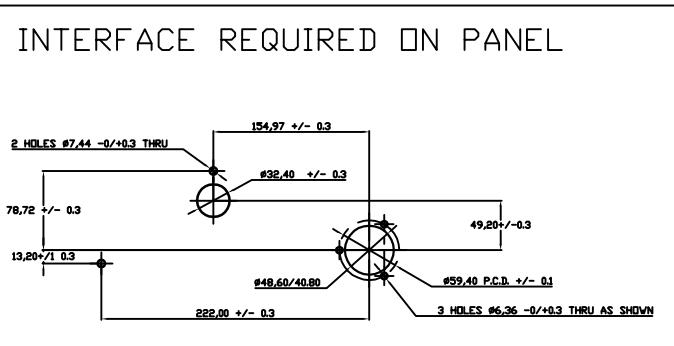
HOLD/RELEASE VALVE INTEGRATED INTO PANEL
 O RING SEALING INTO PUMP
 SEALING COMPOUND NEEDED BETWEEN CUSTOMER PLATE AND PUMP MODULE
 NOTE: THE KNOB IS REMOVED TO FIT PANEL BY UNSCREWING M8 SOCKET SETS 0 & 180°. 2ND SET FITTED ON TOP TO LOCK SCREWS



50MM GAUGE POSSIBLE POSITION PIPE TO G1/4 PRESSURE PORT

M6 NUT FITTED BEHIND 2 PLACES
 SEALANT REQUIRED UNDER SCREW HEAD WHEN CUSTOMER FITS PANEL

- NOTES
1. DISPLACEMENT 5.8CC/DOUBLE STROKE SINGLE SPEED TO 300 BAR
 2. FLUID- MINERAL OIL
 3. TEMPERATURE RANGE -10 TO +80 DEG C
 4. MASS tba
 5. SPECIFICATION SUBJECT TO REVISION
 6. MATERIALS OF CONSTRUCTION
 ALUMINIUM ALLOY BS1474 6082T6 HARD ANODISED
 STAINLESS STEEL 302,303,304,316,420,431, 17-4PH
 ALUMINIUM BRONZE CW307G
 PISTON ROD HARD CHROME PLATED 316 STAINLESS STEEL
 7. POPPET TYPE OUTLET CHECK VALVE/ REPLACEABLE SEAT
 8. CLEVIS FITTED, ARC OF MOVEMENT PER NOTE
 9. MOUNTING PLATE AND GAUGE SHOWN FOR GUIDANCE
 CUSTOMER SUPPLIES THESE
 10. RELIEF VALVE SET @ 300 BAR
 ADJUSTABLE BY USER UNDER KNURLED CAP ON BODY
 11. SEAL MATERIALS - PTFE, PU, UHMW, NITRILE
 12. TWO SPEED MODEL AVAILABLE AS MPP-2 SPEED
- NOTES ON SEALING OF MODULE
 SHAFT- SEALED THROUGH BEARING WITH O RING /DA EXCLUDER/PTFE BEARING
 BEZEL HAS O RING FACE SEAL EXTERNAL FACE OF PANEL/BEZEL
 3 SCREWS NEED SEALANT UNDER HEADS INTERNALLY.
 RELEASE VALVE- SEALED INTO OUR MODULE WITH O RINGS
 NEEDS SEALANT REAR OF CUSTOMER PANEL/SURFACE OF SARUM MODULE
 2 OFF M6 SCREWS INTO TABS- NEED SEALANT UNDER HEADS EXTERNALLY.



UNLESS OTHERWISE STATED:
 DIMENSIONS IN MILLIMETRES
 SURFACE FINISH IN MICROMETRES
 REMOVE SHARP EDGES

© COPYRIGHT 2009 SARUM HYDRAULICS LTD.



SARUM HYDRAULICS LTD.

P.O. BOX 48, SALISBURY SP1 3YB
 TEL. 01722 328388 FAX. 01722 414307

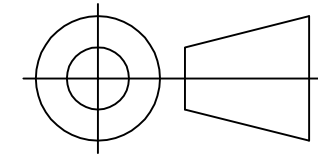
TITLE
 INSTALLATION DRAWING- S/SPEED MPP

MATERIAL -
 FINISH -

DRAWN JGF	APP JF
	CHKD
SCALE FULL	SHEET OF
CAD 2-D MPP S/SPEED INST DG	
DRAWING NO.	
MPP SINGLE SPEED INST DG	

1	FIRST ISSUE	07/20
ISSUE	D.C.N.	CHANGE DESCRIPTION & DATE
		DATE IMPLEMENTED

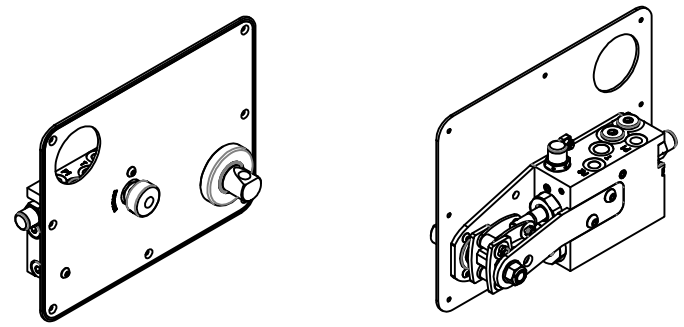
IF IN DOUBT, ASK THIRD ANGLE PROJECTION



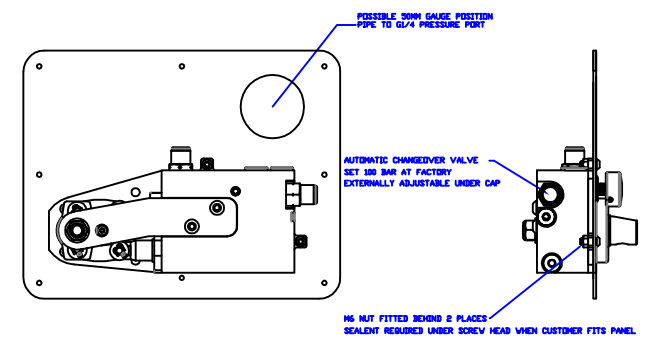
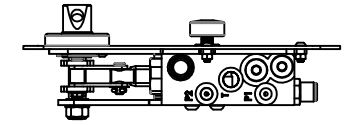
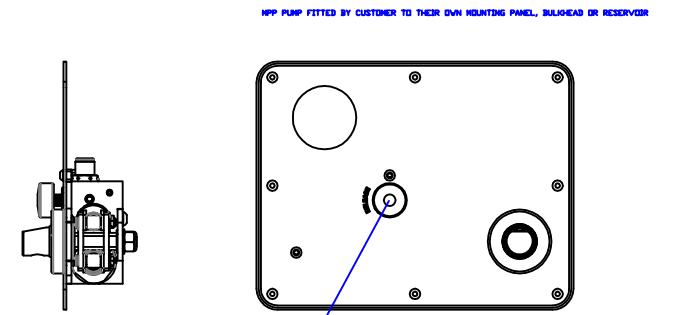
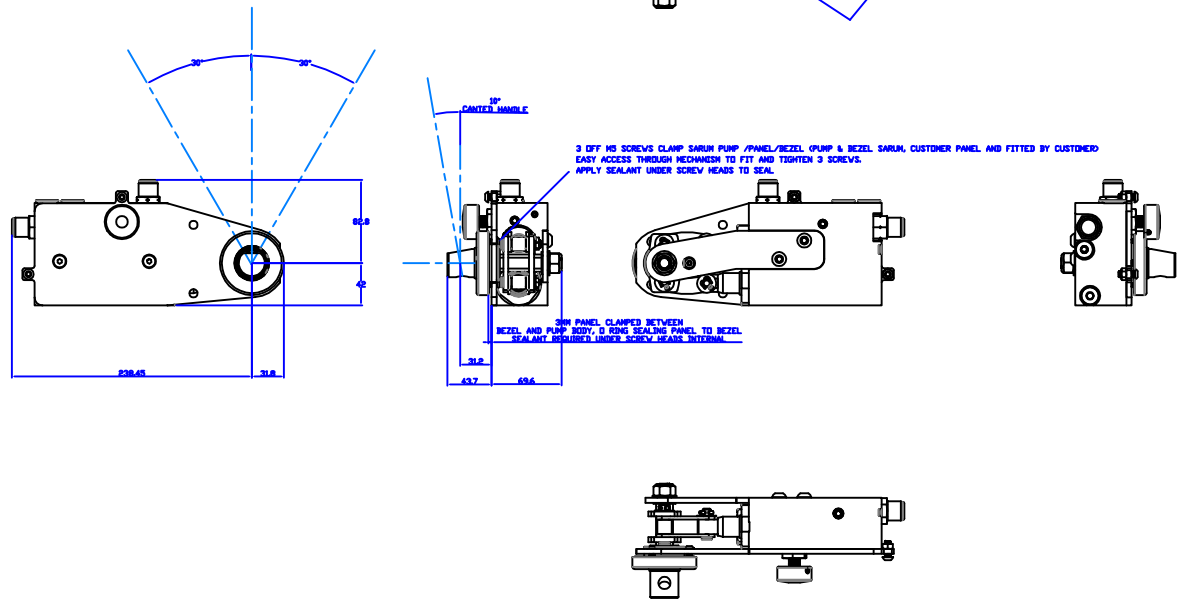
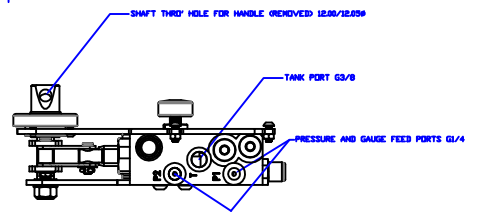
TOLERANCES UNLESS OTHERWISE STATED
 GENERAL TOLERANCES RIGHT ANGLE BENDS & NO DEC. PLACE +/-1.0mm OTHER ANGLES +/-1°
 ONE DEC. PLACE +/-0.3mm MACHINED DIAMETERS
 TWO DEC. PLACE +/-0.1mm CONCENTRIC WITHIN +/-0.1mm T.I.R.
 SCREW THREADS ARE ISO METRIC COARSE PITCH
 TOL. 6g/6H (MED. FIT) TO BS3643
 WIRE DIA./PLATE THICKNESS TO COMMERCIAL LIMITS
 GEOMETRICAL TOLERANCING TO BS308 PART 3



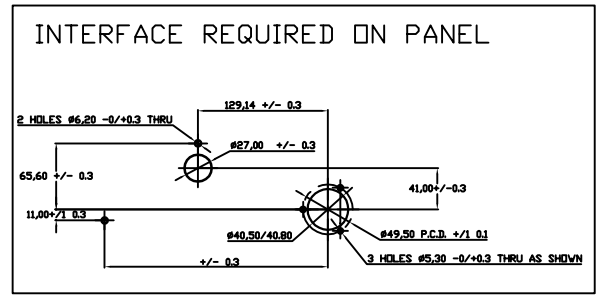
HANDLE REMOVED FOR CLARITY



HANDLE REMOVED FOR CLARITY



HOLD/RELEASE VALVE INTEGRATED INTO PANEL
 O RING SEALING INTO PUMP
 SEALING COUPLERS NEEDED BETWEEN CUSTOMER PLATE AND PUMP HEADS



- NOTES
- DISPLACEMENT 17.4CC/DOUBLE STROKE LP STAGE TO 100 BAR 5.8CC PER DOUBLE STROKE TO 300 BAR HP STAGE
 - FLUID- MINERAL OIL
 - TEMPERATURE RANGE -10 TO +80 DEG C
 - MASS tba
 - SPECIFICATION SUBJECT TO REVISION
 - MATERIALS OF CONSTRUCTION
 ALUMINIUM ALLOY BS1474 6082T6 HARD ANODISED
 STAINLESS STEEL 302,303,304,316,420,431, 17-4PH
 ALUMINIUM BRONZE CW307G
 PISTON ROD HARD CHROME PLATED 316 STAINLESS STEEL
 - POPPET TYPE OUTLET CHECK VALVE/ REPLACEABLE SEAT
 - CLEVIS FITTED, ARC OF MOVEMENT PER NOTE
 - MOUNTING PLATE AND GAUGE SHOWN FOR GUIDANCE CUSTOMER SUPPLIES THESE
 - RELIEF VALVE SET @ 300 BAR ADJUSTABLE BY USER UNDER KNURLED CAP ON BODY
 - SEAL MATERIALS - PTFE, PU, UHMWP, NITRILE
 - SINGLE SPEED MODEL 5.8CC/DOUBLE STROKE AVAILABLE AS MPP SINGLE SPEED
- NOTES ON SEALING OF MODULE
 SHAFT- SEALED THROUGH BEARING WITH O RING /DA EXCLUDER/PTFE BEARING
 BEZEL HAS O RING FACE SEAL EXTERNAL FACE OF PANEL/BEZEL
 3 SCREWS NEED SEALANT UNDER HEADS INTERNALLY.
 RELEASE VALVE- SEALED INTO OUR MODULE WITH O RINGS
 NEEDS SEALANT REAR OF CUSTOMER PANEL/SURFACE OF SARUM MODULE
 2 OFF M6 SCREWS INTO TABS- NEED SEALANT UNDER HEADS EXTERNALLY.

UNLESS OTHERWISE STATED:
 DIMENSIONS IN MILLIMETRES
 SURFACE FINISH IN MICROMETRES
 REMOVE SHARP EDGES

© COPYRIGHT 2009 SARUM HYDRAULICS LTD.

SARUM HYDRAULICS LTD.
 P.O. BOX 48, SALISBURY SP1 3YB
 TEL. 01722 328388 FAX. 01722 414307

DRAWN	JGF	APP	JF
		CHKD	
SCALE	FULL	SHEET	OF
		CAD 2-D	MPP 2 SP INST DG
		DRAWING NO.	

TITLE
INSTALLATION DRAWING- MPP D/SPEED PANEL

1		FIRST ISSUE	04/20
ISSUE	D.C.N.	CHANGE DESCRIPTION & DATE	DATE IMPLEMENTED

MATERIAL -
 FINISH -

MPP 2 SPEED