

MD Two Speed Hand Pump Index for drawings

What do we offer?

316 Stainless Steel Hydraulic Hand Pump.

Our Micropac® MD is a component hand pump which can be configured to suit your exact requirement.

Single acting operation up to 1000 bar, multi-fluid compatible with easy change seal kits.

The Two speed design allows rapid pre-filling at 47 or 32cc to 50 bar, followed by high pressure operation up to 450, 700 or 1000 bar, depending on the model. Switch between low-pressure and high-pressure operation with a rugged manual changeover valve.

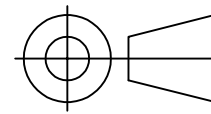
These pumps can be fitted to a range of reservoirs 4-14 litre capacity. It can also be fitted to a sub-plate to adapt the mounting face to suit 89mm legacy reservoirs
See pages 5-8.

ATEX / IECEx certified options for uses in potentially explosive atmospheres. See page 9.

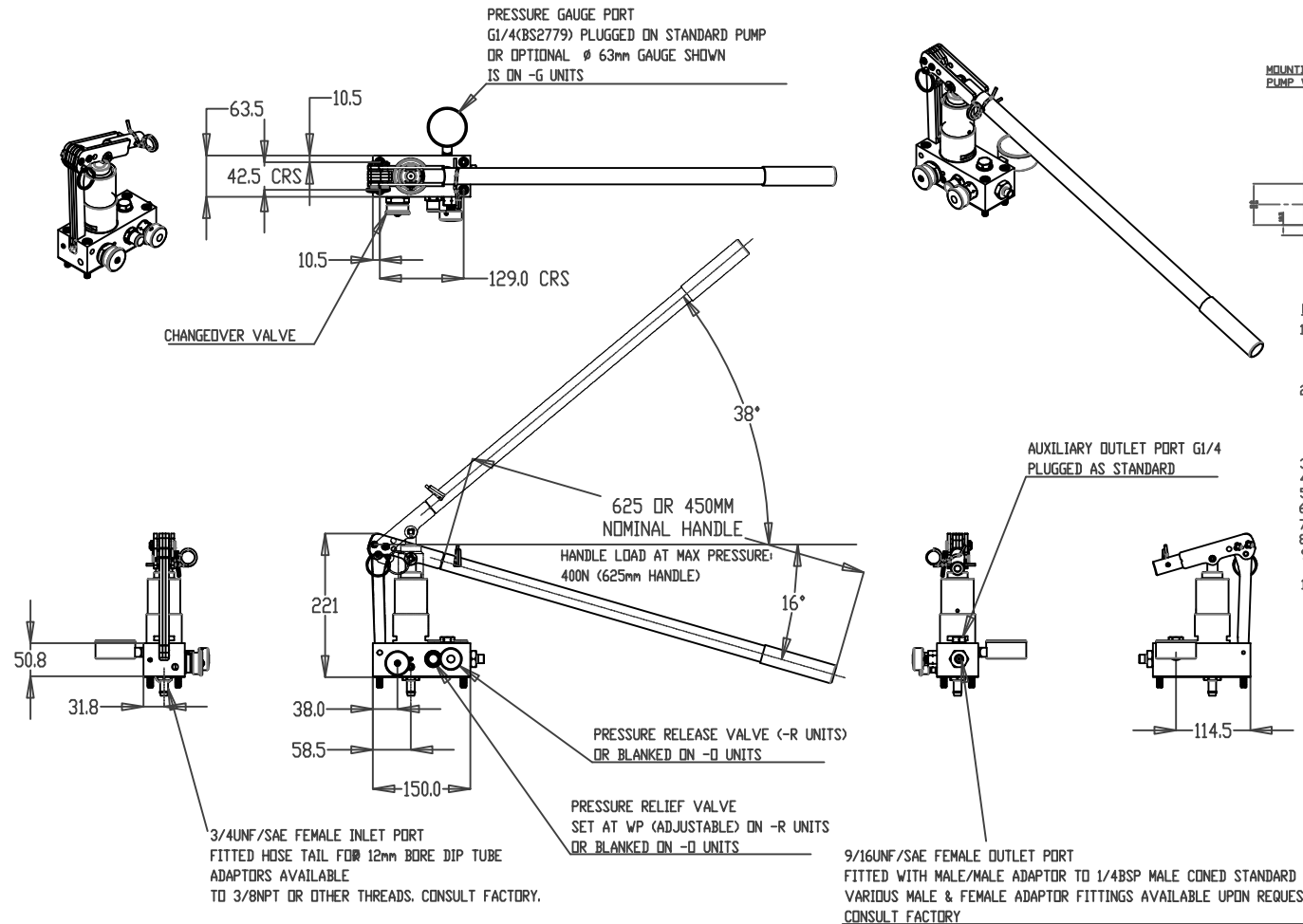


Page	Drawing Number	Description
		Available Pump Models:
2	MD-6-45	LP 47cc / HP 5.2cc / Double stroke up to 450 Bar max. pressure
3	MD-6-70	LP 47cc / HP 4.0cc / Double stroke up to 700 Bar max. pressure
4	MD-6-10	LP 32cc / HP 2.6cc / Double stroke up to 1000 Bar max. pressure
		Available range of Reservoirs:
5	MD-6-XX-5E	5 Litre Portable Reservoir (includes mounting holes for fixed mounting)
6	MD-6-XX-1E	14 Litre Portable Reservoir (includes mounting holes for fixed mounting)
7	MD-6-XX-4E	4 Litre Fixed Reservoir
8	439013400	Sub-plate for retrofit mounting this pump to 89mm centre legacy mounting interfaces: Tangye Hydrapak, Enerpac MP range, HiForce HMP/MHP range (Trademarks acknowledged)
		ATEX / IECEx certified units:
9	MD-6-XX-AX	Just add “-AX” to the end of the ordering code to receive all the necessary upgrades to make the pump suitable for uses in Potentially Explosive atmospheres

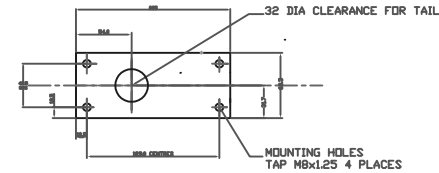
IF IN DOUBT, ASK THIRD ANGLE PROJECTION



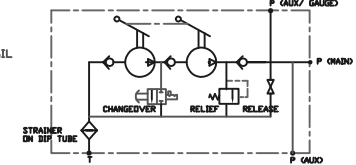
TOLERANCES UNLESS OTHERWISE STATED
 GENERAL TOLERANCES RIGHT ANGLE BENDS &
 NO DEC. PLACE $\pm 1.0\text{mm}$ OTHER ANGLES $\pm 1^\circ$
 ONE DEC. PLACE $\pm 0.3\text{mm}$ MACHINED DIAMETERS
 TWO DEC. PLACE $\pm 0.1\text{mm}$ CONCENTRIC WITHIN
 $\pm 0.1\text{mm}$ T.I.R.
 SCREW THREADS ARE ISO METRIC COARSE PITCH
 TOL. 6g/6H (MED. FIT) TO BS3643
 WIRE DIA./PLATE THICKNESS TO COMMERCIAL LIMITS
 GEOMETRICAL TOLERANCING TO BS308 PART 3



MOUNTING FACE PLAN FOR TANK TOP
 PUMP WILL FIT ON ANY MR SERIES MICROPAK RESERVOIR



HYDRAULIC CIRCUIT



NOTES

- PRESSURE/DISPLACEMENTS
 MD-6-45 450 BAR MODEL 47CC LP/5.2CC HP TO 450 BAR
 MD-6-70 700 BAR MODEL 47CC LP/4.0CC HP TO 700 BAR
 MD-6-10 1000 BAR MODEL 32CC LP/2.6CC HP TO 1000 BAR
- MATERIALS OF CONSTRUCTION
 STAINLESS STEEL BS970 316,303,304,302,431,420
 ALUMINIUM BRONZE CW307G
 NYLON, ACETAL, PVC
 SEALS: NITRILE, FILLED PTFE, PTFE, UHMWP, POLYURETHANE
- MASS 7.0 KG EXCLUDING HANDLE
- DIMENSIONS IN mm
- SPECIFICATION SUBJECT TO REVISION
- FOR ALTERNATIVE FLUIDS/SEAL COMPOUNDS -CONSULT FACTORY
- OPERATING TEMPERATURE RANGE -20 TO +80 DEG C SUBJECT TO FLUID
- STANDARD UNIT SUPPLIED WITH INLET FILTER/DIP TUBE, GASKET & MOUNTING SCREWS.
- SYSTEM DESIGN, INSTALLATION, USE & MAINTENANCE TO BE IN ACCORDANCE WITH STATUTORY & OTHER REQUIREMENTS
- USE DATA SHEET 439006400 FOR ORDERING CODES

ORDERING CODE
 MD-6-45 450 BAR MODEL 47CC LP/5.2CC HP TO 450 BAR
 MD-6-70 700 BAR MODEL 47CC LP/4.0CC HP TO 700 BAR
 MD-6-10 1000 BAR MODEL 32CC LP/2.6CC HP TO 1000 BAR

ADD HANDLE, -4 IS 450MM, -6 IS 625MM
 ADD SEALS, -N IS STANDARD NITRILE/UHMWP/PTFE, -V IS FLUOROCARBON, -E IS EPDM
 ADD TEST FLUID, -W IS WATER, -O IS MINERAL OIL
 ADD RELEASE/HOLD VALVE, -R IS RELEASE/HOLD VALVE FITTED, -O IS PLUGGED
 ADD GAUGE OPTION, -G IS 63MM MAX RANGE PUMP BAR, -O IS PLUGGED.
 SPECIFY ON ORDER IF DIFFERENT GAUGE RANGE
 ADD RELIEF VALVE OPTION, -R IS RELIEF VALVE FITTED, SET MAX RANGE PUMP, -O PLUGGED
 SPECIFY ALTERNATE RANGE ON ORDER.
 ADD OPTIONAL 5 L PORTABLE 316 RESERVOIR, -5 ADDS OPTION.
 CONSULT FACTORY IF IN DOUBT.

FULL RANGE OF MR RESERVOIRS CAN BE ORDERED SEPARATELY

UNLESS OTHERWISE STATED:
 DIMENSIONS IN MILLIMETRES
 SURFACE FINISH IN MICROMETRES
 REMOVE SHARP EDGES

© COPYRIGHT 2022 SARUM HYDRAULICS LTD.



SARUM HYDRAULICS LTD.

SALISBURY, SP4 6EB, UK
 www.sarum-hydraulics.co.uk

TITLE

INSTALLATION DRAWING: MD SERIES 2 SPEED PUMP, 450BAR

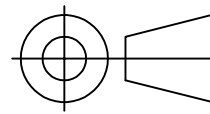
MATERIAL PER NOTES

FINISH PER NOTES

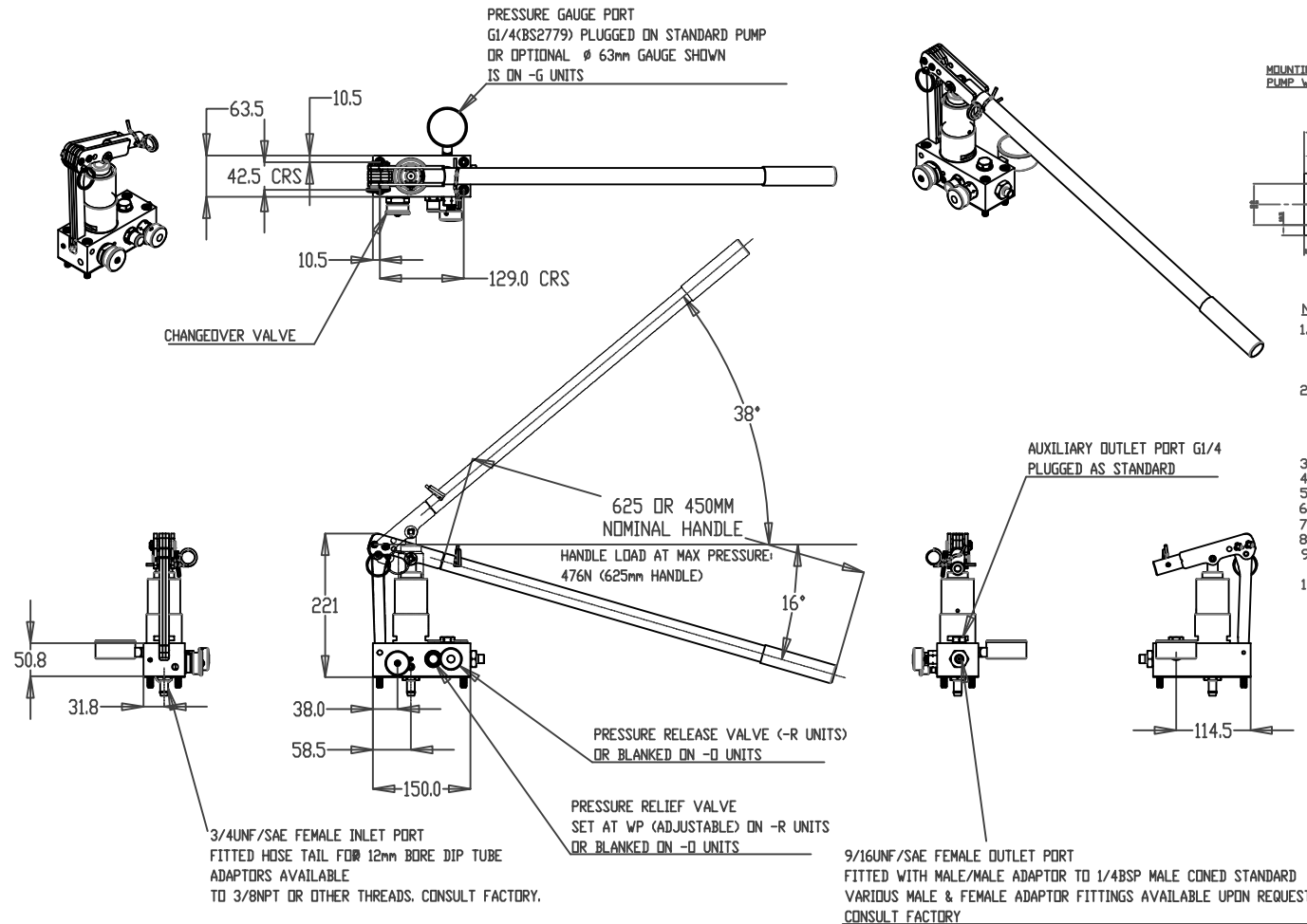
DRAWN NO	APP
	CHKD
SCALE F SIZE	SHEET OF
CAD 2-D	MD-6-45
DRAWING NO.	
MD-6-45	

2	2303221	PU SEALS, AND WEIGHT WAS 6KG	N.O 03/23
1		FIRST ISSUE	06/22
ISSUE	D.C.N.	CHANGE DESCRIPTION & DATE	DATE IMPLEMENTED

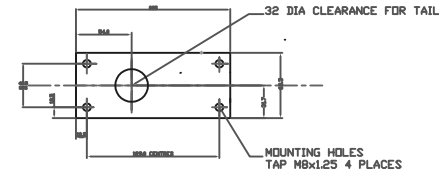
IF IN DOUBT, ASK THIRD ANGLE PROJECTION



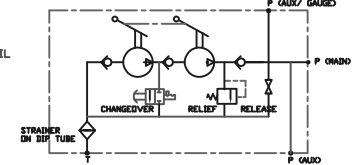
TOLERANCES UNLESS OTHERWISE STATED
 GENERAL TOLERANCES RIGHT ANGLE BENDS &
 NO DEC. PLACE $\pm 1.0\text{mm}$ OTHER ANGLES $\pm 1^\circ$
 ONE DEC. PLACE $\pm 0.3\text{mm}$ MACHINED DIAMETERS
 TWO DEC. PLACE $\pm 0.1\text{mm}$ CONCENTRIC WITHIN
 $\pm 0.1\text{mm}$ T.I.R.
 SCREW THREADS ARE ISO METRIC COARSE PITCH
 TOL. 6g/6H (MED. FIT) TO BS3643
 WIRE DIA./PLATE THICKNESS TO COMMERCIAL LIMITS
 GEOMETRICAL TOLERANCING TO BS308 PART 3



MOUNTING FACE PLAN FOR TANK TOP
 PUMP WILL FIT ON ANY MR SERIES MICROPAK RESERVOIR



HYDRAULIC CIRCUIT



NOTES

- PRESSURE/DISPLACEMENTS
 MD-6-45 450 BAR MODEL 47CC LP/5.2CC HP TO 450 BAR
 MD-6-70 700 BAR MODEL 47CC LP/4.0CC HP TO 700 BAR
 MD-6-10 1000 BAR MODEL 32CC LP/2.6CC HP TO 1000 BAR
- MATERIALS OF CONSTRUCTION
 STAINLESS STEEL BS970 316,303,304,302,431,420
 ALUMINIUM BRONZE CW307G
 NYLON, ACETAL, PVC
 SEALS: NITRILE, FILLED PTFE, PTFE, UHMWP, POLYURETHANE
- MASS 7.0 KG EXCLUDING HANDLE
- DIMENSIONS IN mm
- SPECIFICATION SUBJECT TO REVISION
- FOR ALTERNATIVE FLUIDS/SEAL COMPOUNDS -CONSULT FACTORY
- OPERATING TEMPERATURE RANGE -20 TO +80 DEG C SUBJECT TO FLUID
- STANDARD UNIT SUPPLIED WITH INLET FILTER/DIP TUBE, GASKET & MOUNTING SCREWS.
- SYSTEM DESIGN, INSTALLATION, USE & MAINTENANCE TO BE IN ACCORDANCE WITH STATUTORY & OTHER REQUIREMENTS
- USE DATA SHEET 439006400 FOR ORDERING CODES

ORDERING CODE
 MD-6-45 450 BAR MODEL 47CC LP/5.2CC HP TO 450 BAR
 MD-6-70 700 BAR MODEL 47CC LP/4.0CC HP TO 700 BAR
 MD-6-10 1000 BAR MODEL 32CC LP/2.6CC HP TO 1000 BAR

ADD HANDLE, -4 IS 450MM, -6 IS 625MM
 ADD SEALS, -N IS STANDARD NITRILE/UHMWP/PTFE, -V IS FLUOROCARBON, -E IS EPDM
 ADD TEST FLUID, -W IS WATER, -O IS MINERAL OIL
 ADD RELEASE/HOLD VALVE, -R IS RELEASE/ HOLD VALVE FITTED, -O IS PLUGGED
 ADD GAUGE OPTION, -G IS 63MM MAX RANGE PUMP BAR, -O IS PLUGGED.
 SPECIFY ON ORDER IF DIFFERENT GAUGE RANGE
 ADD RELIEF VALVE OPTION, -R IS RELIEF VALVE FITTED, SET MAX RANGE PUMP, -O PLUGGED
 SPECIFY ALTERNATE RANGE ON ORDER.
 ADD OPTIONAL 5 L PORTABLE 316 RESERVOIR, -5 ADDS OPTION.
 CONSULT FACTORY IF IN DOUBT.

FULL RANGE OF MR RESERVOIRS CAN BE ORDERED SEPARATELY

UNLESS OTHERWISE STATED:
 DIMENSIONS IN MILLIMETRES
 SURFACE FINISH IN MICROMETRES
 REMOVE SHARP EDGES

© COPYRIGHT 2022 SARUM HYDRAULICS LTD.



SARUM HYDRAULICS LTD.

SALISBURY, SP4 6EB, UK
 www.sarum-hydraulics.co.uk

TITLE

INSTALLATION DRAWING: MD SERIES 2 SPEED PUMP, 700BAR

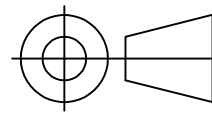
MATERIAL PER NOTES

FINISH PER NOTES

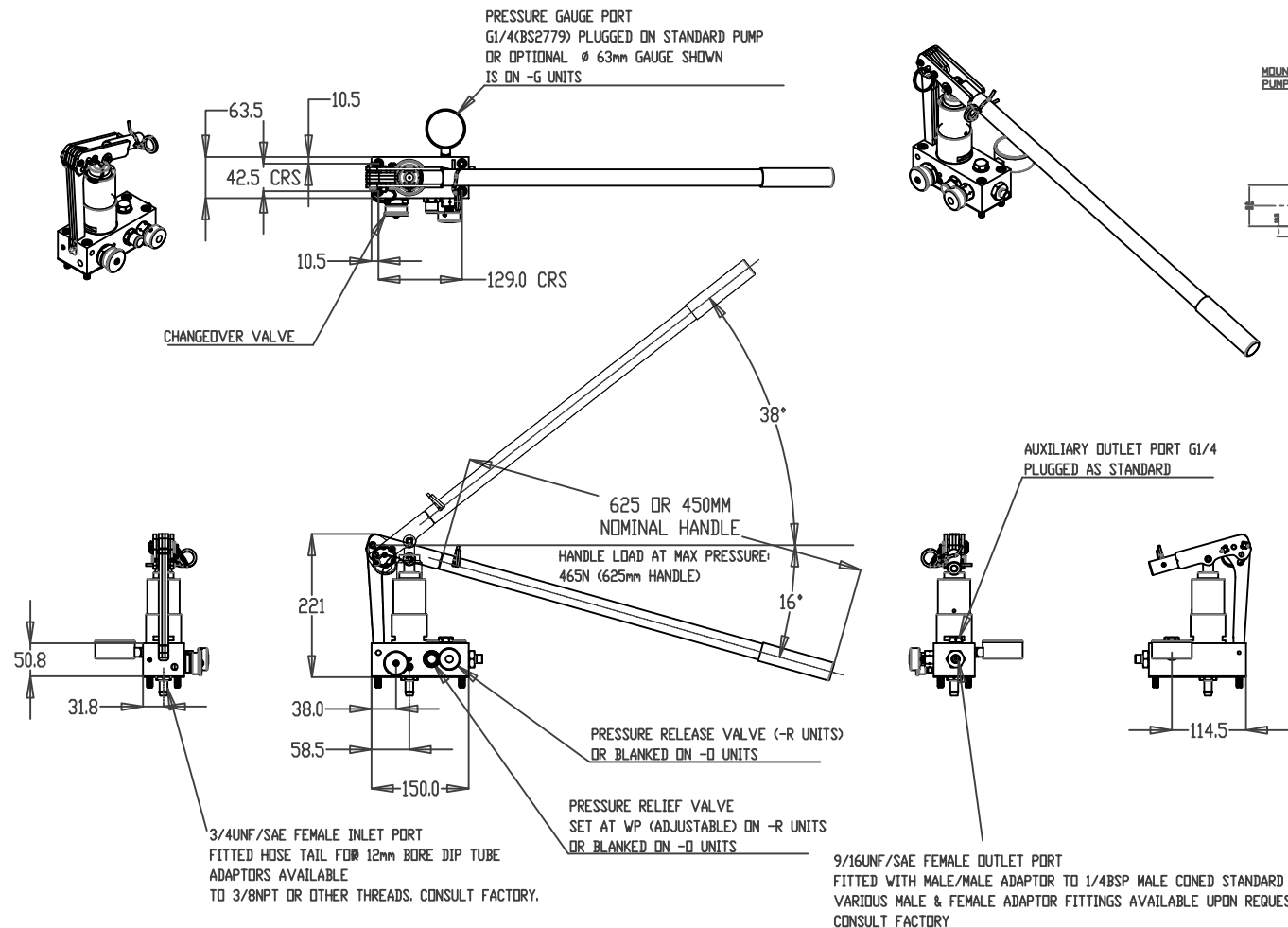
DRAWN NO	APP
	CHKD
SCALE F SIZE	SHEET OF
CAD 2-D	MD-6-70
DRAWING NO.	
MD-6-70	

2	2303221	PU SEALS, AND WEIGHT WAS 6KG	N.O 03/23
1		FIRST ISSUE	06/22
ISSUE	D.C.N.	CHANGE DESCRIPTION & DATE	DATE IMPLEMENTED

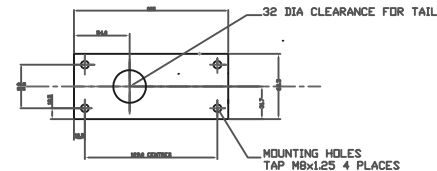
IF IN DOUBT, ASK THIRD ANGLE PROJECTION



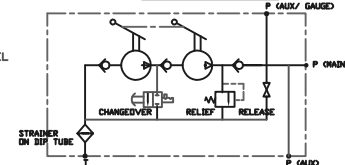
TOLERANCES UNLESS OTHERWISE STATED
 GENERAL TOLERANCES RIGHT ANGLE BENDS &
 NO DEC. PLACE $\pm 1.0\text{mm}$ OTHER ANGLES $\pm 1^\circ$
 ONE DEC. PLACE $\pm 0.3\text{mm}$ MACHINED DIAMETERS
 TWO DEC. PLACE $\pm 0.1\text{mm}$ CONCENTRIC WITHIN
 $\pm 0.1\text{mm}$ T.I.R.
 SCREW THREADS ARE ISO METRIC COARSE PITCH
 TOL. 6g/6H (MED. FIT) TO BS3643
 WIRE DIA./PLATE THICKNESS TO COMMERCIAL LIMITS
 GEOMETRICAL TOLERANCING TO BS308 PART 3



MOUNTING FACE PLAN FOR TANK TOP
 PUMP WILL FIT ON ANY MR SERIES MICROPAK RESERVOIR



HYDRAULIC CIRCUIT



NOTES

- PRESSURE/DISPLACEMENTS
 MD-6-45 450 BAR MODEL 47CC LP/5.2CC HP TO 450 BAR
 MD-6-70 700 BAR MODEL 47CC LP/4.0CC HP TO 700 BAR
 MD-6-10 1000 BAR MODEL 32CC LP/2.6CC HP TO 1000 BAR
- MATERIALS OF CONSTRUCTION
 STAINLESS STEEL BS970 316,303,304,302,431,420
 ALUMINIUM BRONZE CW307G
 NYLON, ACETAL, PVC
 SEALS: NITRILE, FILLED PTFE, PTFE, UHMWP, POLYURETHANE
- MASS 7.0 KG EXCLUDING HANDLE
- DIMENSIONS IN mm
- SPECIFICATION SUBJECT TO REVISION
- FOR ALTERNATIVE FLUIDS/SEAL COMPOUNDS -CONSULT FACTORY
- OPERATING TEMPERATURE RANGE -20 TO +80 DEG C SUBJECT TO FLUID
- STANDARD UNIT SUPPLIED WITH INLET FILTER/DIP TUBE, GASKET & MOUNTING SCREWS.
- SYSTEM DESIGN, INSTALLATION, USE & MAINTENANCE TO BE IN ACCORDANCE WITH STATUTORY & OTHER REQUIREMENTS
- USE DATA SHEET 439006400 FOR ORDERING CODES

ORDERING CODE
 MD-6-45 450 BAR MODEL 47CC LP/5.2CC HP TO 450 BAR
 MD-6-70 700 BAR MODEL 47CC LP/4.0CC HP TO 700 BAR
 MD-6-10 1000 BAR MODEL 32CC LP/2.6CC HP TO 1000 BAR

ADD HANDLE, -4 IS 450MM, -6 IS 625MM
 ADD SEALS, -N IS STANDARD NITRILE/UHMWP/PTFE, -V IS FLUOROCARBON, -E IS EPDM
 ADD TEST FLUID, -W IS WATER, -O IS MINERAL OIL
 ADD RELEASE/HOLD VALVE, -R IS RELEASE/ HOLD VALVE FITTED, -O IS PLUGGED
 ADD GAUGE OPTION, -G IS 63MM MAX RANGE PUMP BAR, -O IS PLUGGED.
 SPECIFY ON ORDER IF DIFFERENT GAUGE RANGE
 ADD RELIEF VALVE OPTION, -R IS RELIEF VALVE FITTED, SET MAX RANGE PUMP, -O PLUGGED
 SPECIFY ALTERNATE RANGE ON ORDER.
 ADD OPTIONAL 5 L PORTABLE 316 RESERVOIR, -5 ADDS OPTION.
 CONSULT FACTORY IF IN DOUBT.

FULL RANGE OF MR RESERVOIRS CAN BE ORDERED SEPARATELY

UNLESS OTHERWISE STATED:
 DIMENSIONS IN MILLIMETRES
 SURFACE FINISH IN MICROMETRES
 REMOVE SHARP EDGES

© COPYRIGHT 2022 SARUM HYDRAULICS LTD.



SARUM HYDRAULICS LTD.

SALISBURY, SP4 6EB, UK
 www.sarum-hydraulics.co.uk

TITLE

INSTALLATION DRAWING: MD SERIES 2 SPEED PUMP, 1000BAR

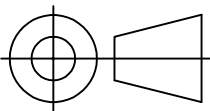
MATERIAL PER NOTES

FINISH PER NOTES

DRAWN NO	APP
	CHKD
SCALE F SIZE	SHEET OF
CAD 2-D MD-6-10	
DRAWING NO.	
MD-6-10	

2	2303221	PU SEALS, AND WEIGHT WAS 6KG	N.O 03/23
1		FIRST ISSUE	06/22
ISSUE	D.C.N.	CHANGE DESCRIPTION & DATE	DATE IMPLEMENTED

IF IN DOUBT, ASK THIRD ANGLE PROJECTION



DEFAULT/STANDARD RESERVOIR VERTICAL. PREFERRED ORIENTATION

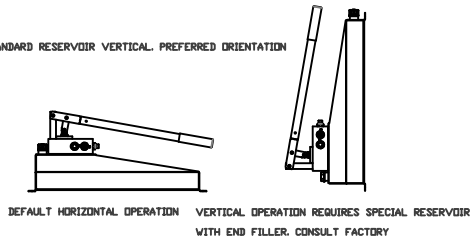
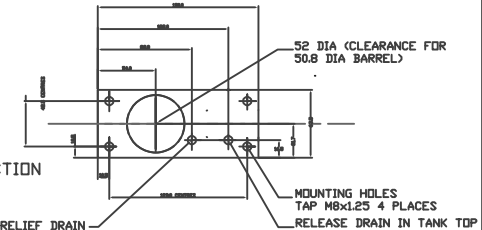


ILLUSTRATION OF MICRO PAC MD PUMP MOUNTED ON RESERVOIR MR-P-3-5E
ORDER A PUMP PLUS A RESERVOIR

TOLERANCES UNLESS OTHERWISE STATED
GENERAL TOLERANCES RIGHT ANGLE BENDS &
NO DEC. PLACE $\pm 1.0\text{mm}$ OTHER ANGLES $\pm 1^\circ$
ONE DEC. PLACE $\pm 0.3\text{mm}$ MACHINED DIAMETERS
TWO DEC. PLACE $\pm 0.1\text{mm}$ CONCENTRIC WITHIN
 $\pm 0.1\text{mm}$ T.I.R.
SCREW THREADS ARE ISO METRIC COARSE PITCH
TOL. 6g/6h (MED. FIT) TO BS3643
WIRE DIA./PLATE THICKNESS TO COMMERCIAL LIMITS
GEOMETRICAL TOLERANCING TO BS308 PART 3

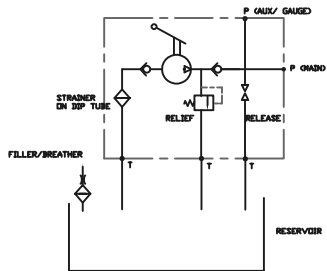
MOUNTING FACE PLAN FOR MICRO PAC RESERVOIR



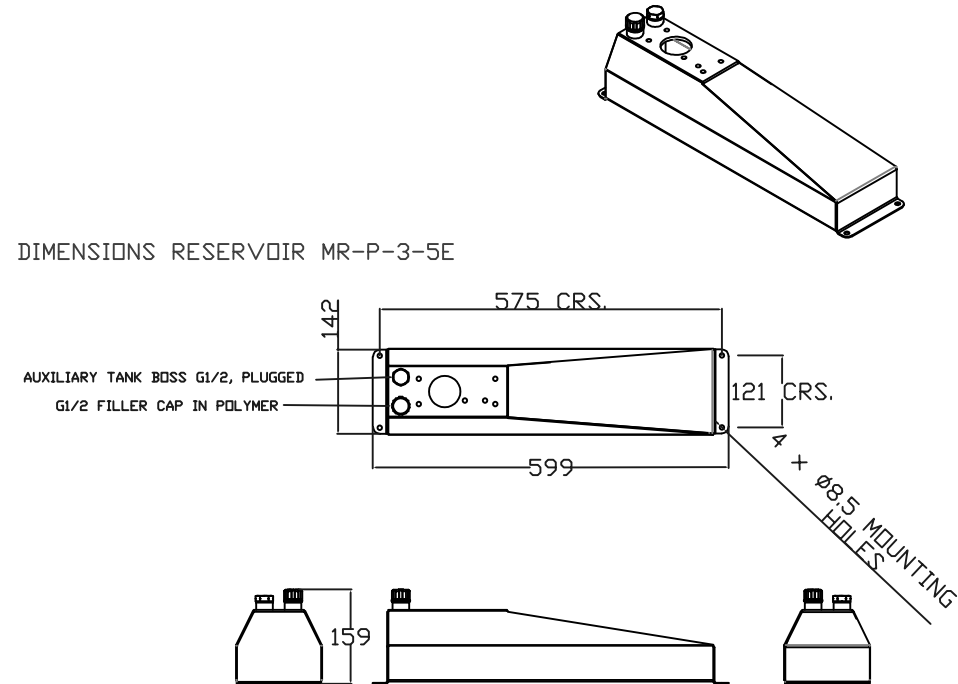
NOTES

1. MATERIALS OF CONSTRUCTION
316 STAINLESS 1.4404
CAP POLYMER
2. ALL DIMENSIONS IN mm
3. MASS 5 KG DRY (RESERVOIR ALONE)
4. USE DATA SHEET 479007800 FOR ORDERING CODES
5. PUMP AND RESERVOIR AVAILABLE AS SEPARATE ITEMS
6. THE RESERVOIR IS NOT A PRESSURE VESSEL.
IT MUST ALWAYS BE VENTED TO ATMOSPHERE
MAXIMUM INTERNAL PRESSURE 0.3 BARG
7. NOMINAL CAPACITY 5 LITRES (1.3USG)
8. ATEX MODEL AVAILABLE: ADD -AX TO END OF ORDERING CODE

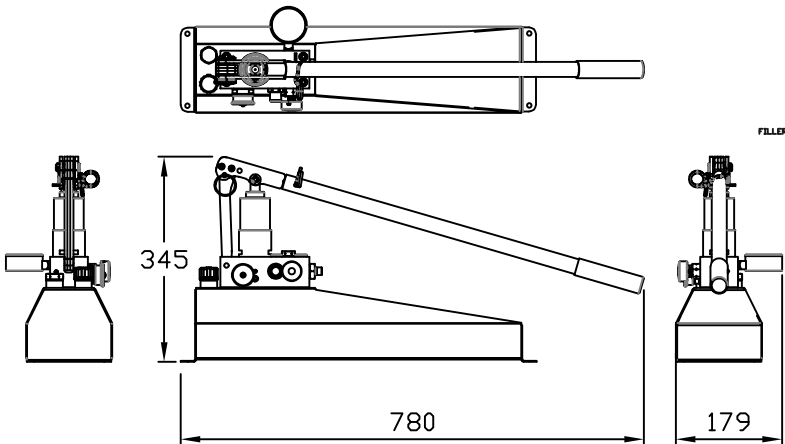
HYDRAULIC CIRCUIT FOR MICRO PAC PUMP/RESERVOIR



DIMENSIONS RESERVOIR MR-P-3-5E



UNLESS OTHERWISE STATED:
DIMENSIONS IN MILLIMETRES
SURFACE FINISH IN MICROMETRES
REMOVE SHARP EDGES

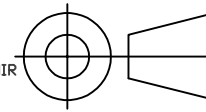


© COPYRIGHT 2022 SARUM HYDRAULICS LTD.

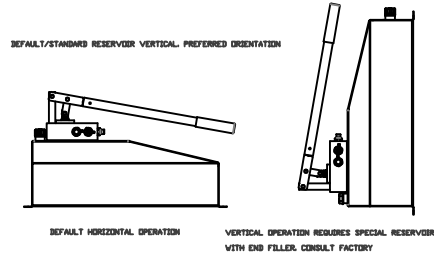
				<div><div><div>SARUM</div><div>HYDRAULICS</div></div><div>SARUM HYDRAULICS LTD. SALISBURY, SP4 6EB, UK www.sarum-hydraulics.co.uk</div></div>	<div>DRAWNNO</div>	<div>APP</div>		
						<div>CHKD</div>		
					<div>SCALE F</div>	<div>SIZE</div>	<div>SHEET</div>	<div>OF</div>
					<div>CAD 2-D</div> <div>MD-6-XX-5E</div>			
					<div>DRAWING NO.</div>			
				<div>TITLE</div> <div>INSTALLATION DRAWING MD PUMP/5 L ERGO 316 RESERVOIR</div>	<div>MD-6-XX-5E</div>			
1		<div>FIRST ISSUE</div>	<div>06/22</div>	<div>MATERIAL PER NOTE</div>				
<div>ISSUE</div>	<div>D.C.N.</div>	<div>CHANGE DESCRIPTION & DATE</div>	<div>DATE IMPLEMENTED</div>	<div>FINISH PER NOTE</div>				

IF IN DOUBT, ASK

THIRD ANGLE PROJECTION



TOLERANCES UNLESS OTHERWISE STATED
 GENERAL TOLERANCES RIGHT ANGLE BENDS &
 NO DEC. PLACE $\pm 1.0\text{mm}$ OTHER ANGLES $\pm 1^\circ$
 ONE DEC. PLACE $\pm 0.3\text{mm}$ MACHINED DIAMETERS
 TWO DEC. PLACE $\pm 0.1\text{mm}$ CONCENTRIC WITHIN
 $\pm 0.1\text{mm}$ T.I.R.
 SCREW THREADS ARE ISO METRIC COARSE PITCH
 TOL. 6g/6h (MED. FIT) TO BS3643
 WIRE DIA./PLATE THICKNESS TO COMMERCIAL LIMITS
 GEOMETRICAL TOLERANCING TO BS308 PART 3



MOUNTING FACE PLAN FOR MICROPAC RESERVOIR

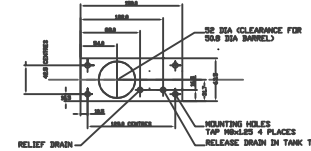


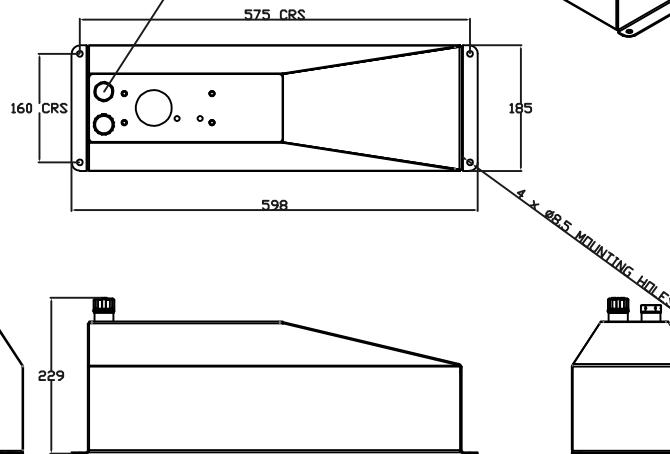
ILLUSTRATION OF MICROPAC MD PUMP MOUNTED ON RESERVOIR
 ORDER A PUMP PLUS A RESERVOIR

NOTES

1. MATERIALS OF CONSTRUCTION
 316 STAINLESS 1.4404
 CAP POLYMER
2. ALL DIMENSIONS IN mm
3. MASS 8 KG DRY (RESERVOIR ALONE)
4. USE DATA SHEET 439007800 FOR ORDERING CODES
5. PUMP AND RESERVOIR AVAILABLE SEPARATELY
6. THE RESERVOIR IS NOT A PRESSURE VESSEL.
 IT MUST ALWAYS BE VENTED TO ATMOSPHERE
 MAXIMUM INTERNAL PRESSURE 0.3 BARG
7. NOMINAL CAPACITY 14 LITRES (3.7USG)
8. ATEX MODEL AVAILABLE: ADD -AX TO END OF ORDERING CODE

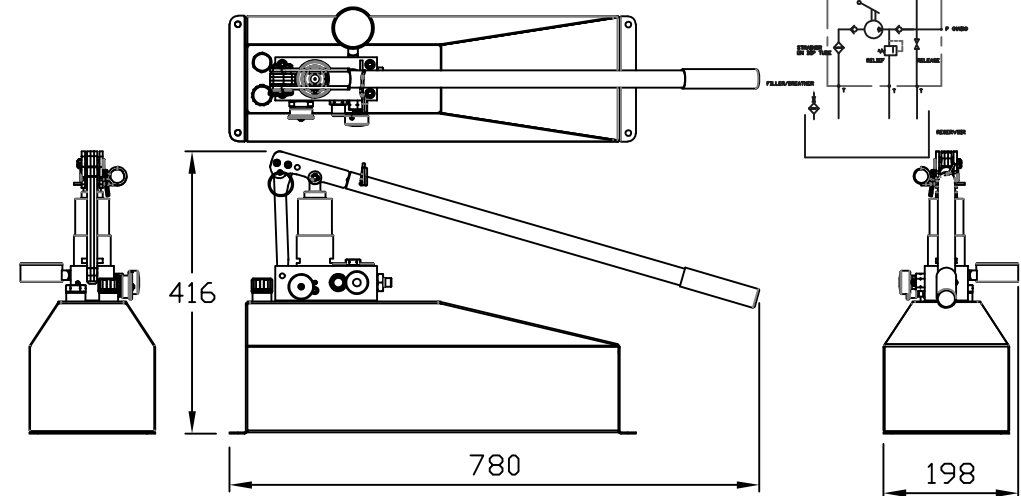
DIMENSIONS RESERVOIR MR-P-3-1E

2 x G1/2 PORTS;
 ONE FITTED POLYMER FILLER BREATHER CAP
 ONE FITTED HEX BLANK PLUG (3/16) CAN BE USED AS A RETURN PORT



UNLESS OTHERWISE STATED:
 DIMENSIONS IN MILLIMETRES
 SURFACE FINISH IN MICROMETRES
 REMOVE SHARP EDGES

HYDRAULIC CIRCUIT FOR MICROPAC PUMP/RESERVOIR



© COPYRIGHT 2022 SARUM HYDRAULICS LTD.



SARUM HYDRAULICS LTD.

SALISBURY, SP4 6EB, UK
www.sarum-hydraulics.co.uk

TITLE
 INSTALLATION DRAWING MD PUMP/14 L ERGO 316 RESERVOIR

MATERIAL PER NOTE

FINISH PER NOTE

DRAWN NO	APP
	CHKD
SCALE F SIZE	SHEET OF
CAD 2-D	MD-6-XX-1E
DRAWING NO.	MD-6-XX-1E

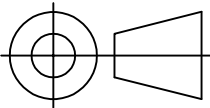
1		FIRST ISSUE	06/22
ISSUE	D.C.N.	CHANGE DESCRIPTION & DATE	DATE IMPLEMENTED

FINISH	PER	NOTE
--------	-----	------

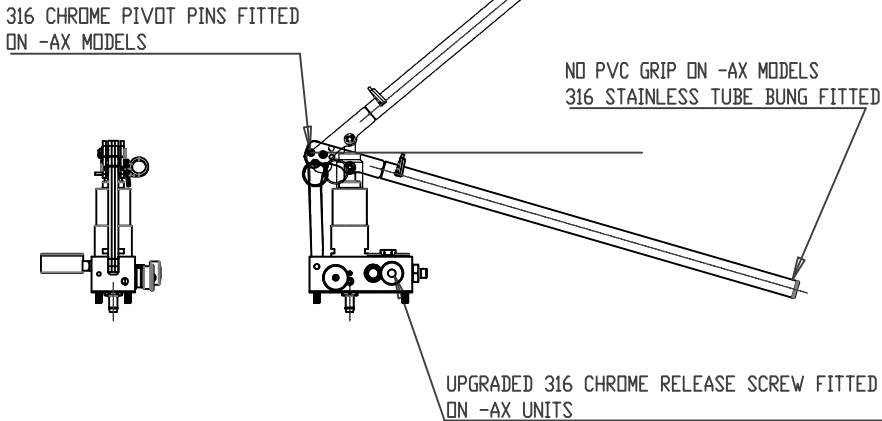
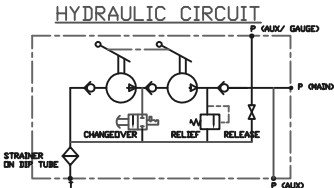
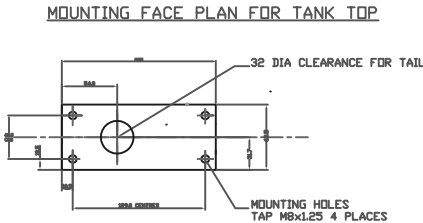
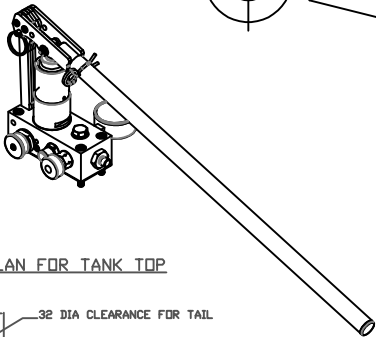
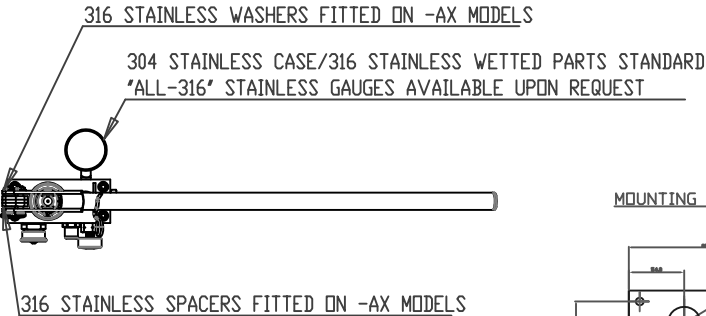
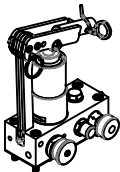
SCREW THREADS ARE ISO METRIC COARSE PITCH
TOL. 6g/6H (MED. FIT) TO BS3643
WIRE DIA./PLATE THICKNESS TO COMMERCIAL LIMITS
GEOMETRICAL TOLERANCING TO BS308 PART 3



IF IN DOUBT, ASK THIRD ANGLE PROJECTION



TOLERANCES UNLESS OTHERWISE STATED
GENERAL TOLERANCES RIGHT ANGLE BENDS &
NO DEC. PLACE +/-1.0mm OTHER ANGLES +/-1°
ONE DEC. PLACE +/-0.3mm MACHINED DIAMETERS
TWO DEC. PLACE +/-0.1mm CONCENTRIC WITHIN
+/-0.1mm T.I.R.
SCREW THREADS ARE ISO METRIC COARSE PITCH
TOL. 6g/6H (MED. FIT) TO BS3643
WIRE DIA./PLATE THICKNESS TO COMMERCIAL LIMITS
GEOMETRICAL TOLERANCING TO BS308 PART 3



- NOTES
- PRESSURE/DISPLACEMENTS
MD-6-45 450 BAR MODEL 47CC LP/5.2CC HP TO 450 BAR
MD-6-70 700 BAR MODEL 47CC LP/4.0CC HP TO 700 BAR
MD-6-10 1000 BAR MODEL 32CC LP/2.6CC HP TO 1000 BAR
 - MATERIALS OF CONSTRUCTION
STAINLESS STEEL BS970 316,303,304,302,431,420
ALUMINIUM BRONZE CW307G
NYLON, ACETAL, PVC
SEALS: NITRILE, FILLED PTFE, PTFE, UHMWP, POLYURETHANE
 - MASS 7.0 KG EXCLUDING HANDLE
 - DIMENSIONS IN mm
 - SPECIFICATION SUBJECT TO REVISION
 - FOR ALTERNATIVE FLUIDS/SEAL COMPOUNDS -CONSULT FACTORY
 - OPERATING TEMPERATURE RANGE -20 TO +80 DEG C SUBJECT TO FLUID
 - STANDARD UNIT SUPPLIED WITH INLET FILTER/DIP TUBE, GASKET & MOUNTING SCREWS.
 - SYSTEM DESIGN, INSTALLATION, USE & MAINTENANCE TO BE IN ACCORDANCE WITH STATUTORY & OTHER REQUIREMENTS
 - USE DATA SHEET 439007800 FOR ORDERING CODES
 - THIS DRAWING SHOWS ATEX/IECEX UPGRADE KIT. ADD -AX TO END OF ORDERING CODE
THIS UPGRADE PROVIDES ALL 316 STAINLESS/BRONZE CW307G EXTERNAL MATERIALS
APART FROM THE PRESSURE GAUGE CASE STANDARD 304 SS, OPTIONAL 316
CONSULT FACTORY IF IN DOUBT.
UNDER THE TERMS OF OUR ATEX/IECEX/UKEX CERTIFICATION, THE PRODUCT CANNOT BE MODIFIED.

UNLESS OTHERWISE STATED:
DIMENSIONS IN MILLIMETRES
SURFACE FINISH IN MICROMETRES
REMOVE SHARP EDGES

© COPYRIGHT 2022 SARUM HYDRAULICS LTD.

					SARUM HYDRAULICS LTD. SALISBURY, SP4 6EB, UK www.sarum-hydraulics.co.uk	DRAWN NO	APP
							CHKD
						SCALE F SIZE	SHEET OF
						CAD 2-D MD-6-XX-AX	
3	2303221	PU SEALS, AND WEIGHT WAS 6KG	N.O 03/23	TITLE INST DRAWING: MD SERIES 2 SPEED PUMP, ATEX UPGRADE MATERIAL PER NOTES FINISH PER NOTES		DRAWING NO. MD-6-XX-AX	
2	2206171	UPDATED TO SOLID MODEL	N.O 06/22				
1		FIRST ISSUE	06/21				
ISSUE	D.C.N.	CHANGE DESCRIPTION & DATE	DATE IMPLEMENTED				