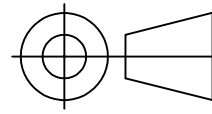
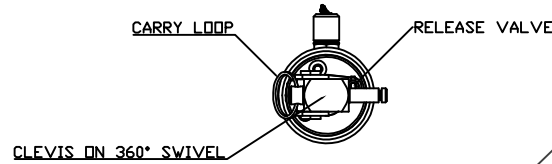
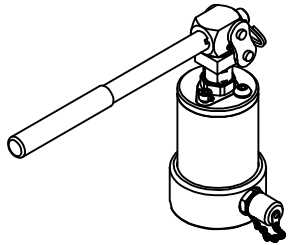


IF IN DOUBT, ASK

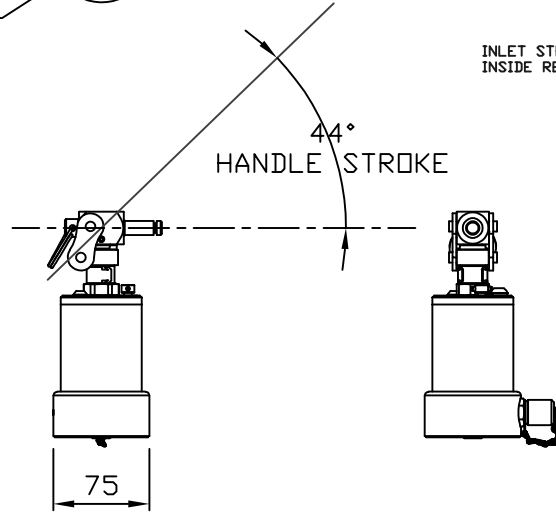
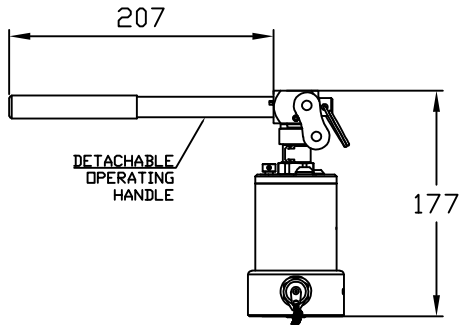
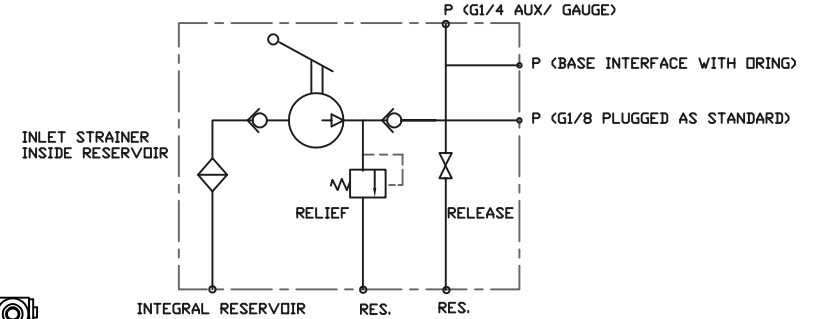
THIRD ANGLE PROJECTION



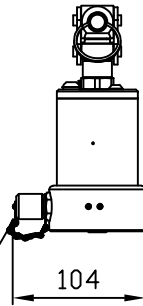
TOLERANCES UNLESS OTHERWISE STATED
 GENERAL TOLERANCES RIGHT ANGLE BENDS &
 NO DEC. PLACE +/-1.0mm OTHER ANGLES +/-1°
 ONE DEC. PLACE +/-0.3mm MACHINED DIAMETERS
 TWO DEC. PLACE +/-0.1mm CONCENTRIC WITHIN
 +/-0.1mm T.I.R.
 SCREW THREADS ARE ISO METRIC COARSE PITCH
 TOL. 6g/6H (MED. FIT) TO BS3643
 WIRE DIA./PLATE THICKNESS TO COMMERCIAL LIMITS
 GEOMETRICAL TOLERANCING TO BS308 PART 3



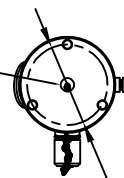
HYDRAULIC CIRCUIT



1/8BSP OUTLET, WITH MINIMESS 1620
 TEST CONNECTION AS STANDARD



BASE PRESSURE OUTLET
 FITTED WITH BS111 ORING



3 x M8 HOLES, TAPPED 16 DEEP
 ON A Ø63,0 P.C.D.

NOTES

- INTEGRAL PUMP/RESERVOIR MODULE
 STANDARD MICRODAC 10T RUNNING GEAR
 ON MANIFOLD BLOCK FOR VARIOUS APPLICATIONS
- WORKING PRESSURE 630 BAR
- FLUID- MINERAL OIL
- DISPLACEMENT 0.5 cm³/DOUBLE STROKE (UP & DOWN)
 SINGLE ACTING- PRESSURE ON DOWN STROKE ONLY
- DIMENSIONS IN mm
- MATERIALS OF CONSTRUCTION:
 STEEL BS970
 302, 303, 316, 420, 431 STAINLESS STEEL
 PISTON ROD HARD CHROME PLATED STAINLESS STEEL
 ALUMINIUM 6082T6 BS1474 MANIFOLD BODY
- FINISH: BRIGHT ZINC PLATE / COLOUR PASSIVATE, PHOSPHATE
 NATURAL ANODISE AA10 MANIFOLD BODY
- SEAL MATERIAL- NITRILE/PTFE.
 CONSULT FACTORY FOR ALTERNATIVE COMPOUNDS.
- TEMP RANGE -30DEG C TO 120 DEG C
- MASS 1.75 KG EXCLUDING HANDLE
 HANDLE ADDITIONAL 0.2KG
- HANDLE LOADS AT 630BAR = 208N

UNLESS OTHERWISE STATED:
 DIMENSIONS IN MILLIMETRES
 SURFACE FINISH IN MICROMETRES
 REMOVE SHARP EDGES

© COPYRIGHT 2022 SARUM HYDRAULICS LTD.



SARUM HYDRAULICS LTD.

SALISBURY, SP4 6EB, UK
 www.sarum-hydraulics.co.uk

DRAWN NO	APP
	CHKD
SCALE F SIZE	SHEET OF
CAD 2-D	512000200

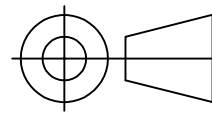
3	2209031	ADDED MINIMESS CONNECTION	N.O 09/22
2		DEVELOPMENT MODS	N.O 01/22
1		FIRST ISSUE	11/21
ISSUE	D.C.N.	CHANGE DESCRIPTION & DATE	DATE IMPLEMENTED

TITLE
INST. DRAWING MPM COMPACT PUMP MODULE, SINGLE SPEED
 MATERIAL PER NOTES
 FINISH PER NOTES

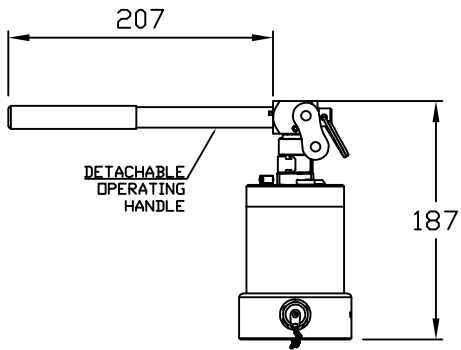
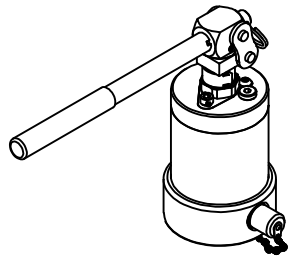
DRAWING NO.
512000200

IF IN DOUBT, ASK

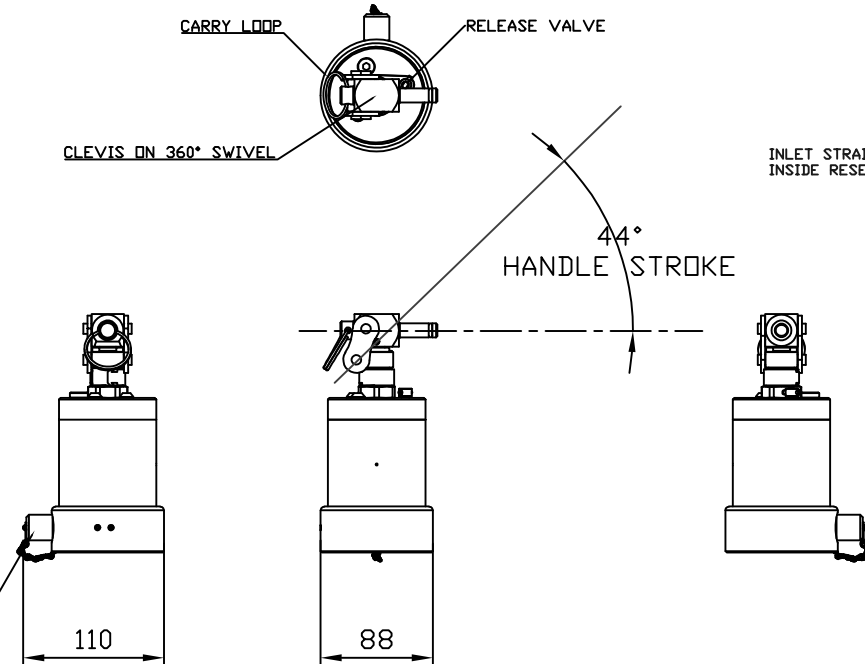
THIRD ANGLE PROJECTION



TOLERANCES UNLESS OTHERWISE STATED
 GENERAL TOLERANCES RIGHT ANGLE BENDS &
 NO DEC. PLACE +/-1.0mm OTHER ANGLES +/-1°
 ONE DEC. PLACE +/-0.3mm MACHINED DIAMETERS
 TWO DEC. PLACE +/-0.1mm CONCENTRIC WITHIN
 +/-0.1mm T.I.R.
 SCREW THREADS ARE ISO METRIC COARSE PITCH
 TOL. 6g/6H (MED. FIT) TO BS3643
 WIRE DIA./PLATE THICKNESS TO COMMERCIAL LIMITS
 GEOMETRICAL TOLERANCING TO BS308 PART 3



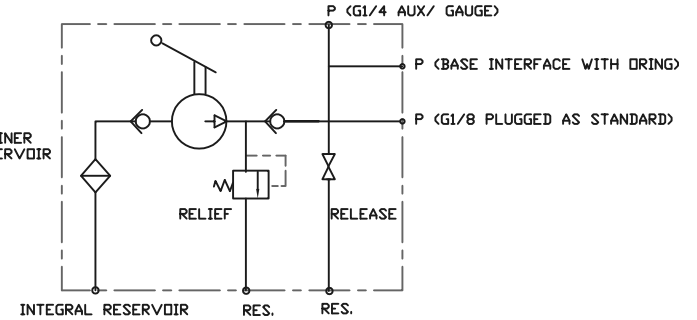
1/8BSP OUTLET, WITH MINIMESS 1620
 TEST CONNECTION AS STANDARD



BASE PRESSURE OUTLET
 FITTED WITH BS111 ORING

3 x M8 HOLES, TAPPED 16 DEEP
 ON A Ø63,0 P.C.D.

HYDRAULIC CIRCUIT



NOTES

1. INTEGRAL PUMP/RESERVOIR MODULE
 STANDARD MICRODAC 20T RUNNING GEAR
 ON MANIFOLD BLOCK FOR VARIOUS APPLICATIONS
2. WORKING PRESSURE 630 BAR
3. FLUID- MINERAL OIL
4. DISPLACEMENT 1.2 cm³/DOUBLE STROKE (UP & DOWN) LP
4. DISPLACEMENT 0.5 cm³/DOUBLE STROKE (UP & DOWN) HP
 SINGLE ACTING- PRESSURE ON DOWN STROKE ONLY
5. DIMENSIONS IN mm
6. MATERIALS OF CONSTRUCTION:
 STEEL BS970
 302, 303, 316, 420, 431 STAINLESS STEEL
 PISTON ROD HARD CHROME PLATED STAINLESS STEEL
 ALUMINIUM 6082T6 BS1474 MANIFOLD BODY
7. FINISH: BRIGHT ZINC PLATE / COLOUR PASSIVATE, PHOSPHATE
 NATURAL ANODISE AA10 MANIFOLD BODY
8. SEAL MATERIAL- NITRILE/PTFE.
 CONSULT FACTORY FOR ALTERNATIVE COMPOUNDS.
9. TEMP RANGE -30DEG C TO 120 DEG C
10. MASS 2.15 KG EXCLUDING HANDLE
 HANDLE ADDITIONAL 0.2KG
11. HANDLE LOADS AT 630BAR = 208N

UNLESS OTHERWISE STATED:
 DIMENSIONS IN MILLIMETRES
 SURFACE FINISH IN MICROMETRES
 REMOVE SHARP EDGES

© COPYRIGHT 2022 SARUM HYDRAULICS LTD.



SARUM HYDRAULICS LTD.

SALISBURY, SP4 6EB, UK
 www.sarum-hydraulics.co.uk

TITLE
 INST. DRAWING MPM COMPACT PUMP MODULE, TWO SPEED

DRAWN NO	APP
	CHKD
SCALE F SIZE	SHEET OF
CAD 2-D	512000300

DRAWING NO.
512000300

1	FIRST ISSUE	09/22	MATERIAL PER NOTES
ISSUE	D.C.N.	CHANGE DESCRIPTION & DATE	DATE IMPLEMENTED
			FINISH PER NOTES