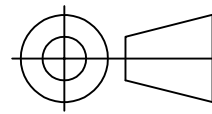
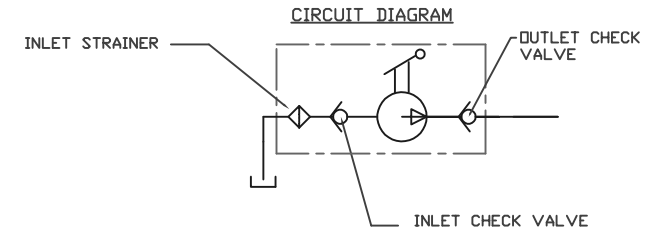
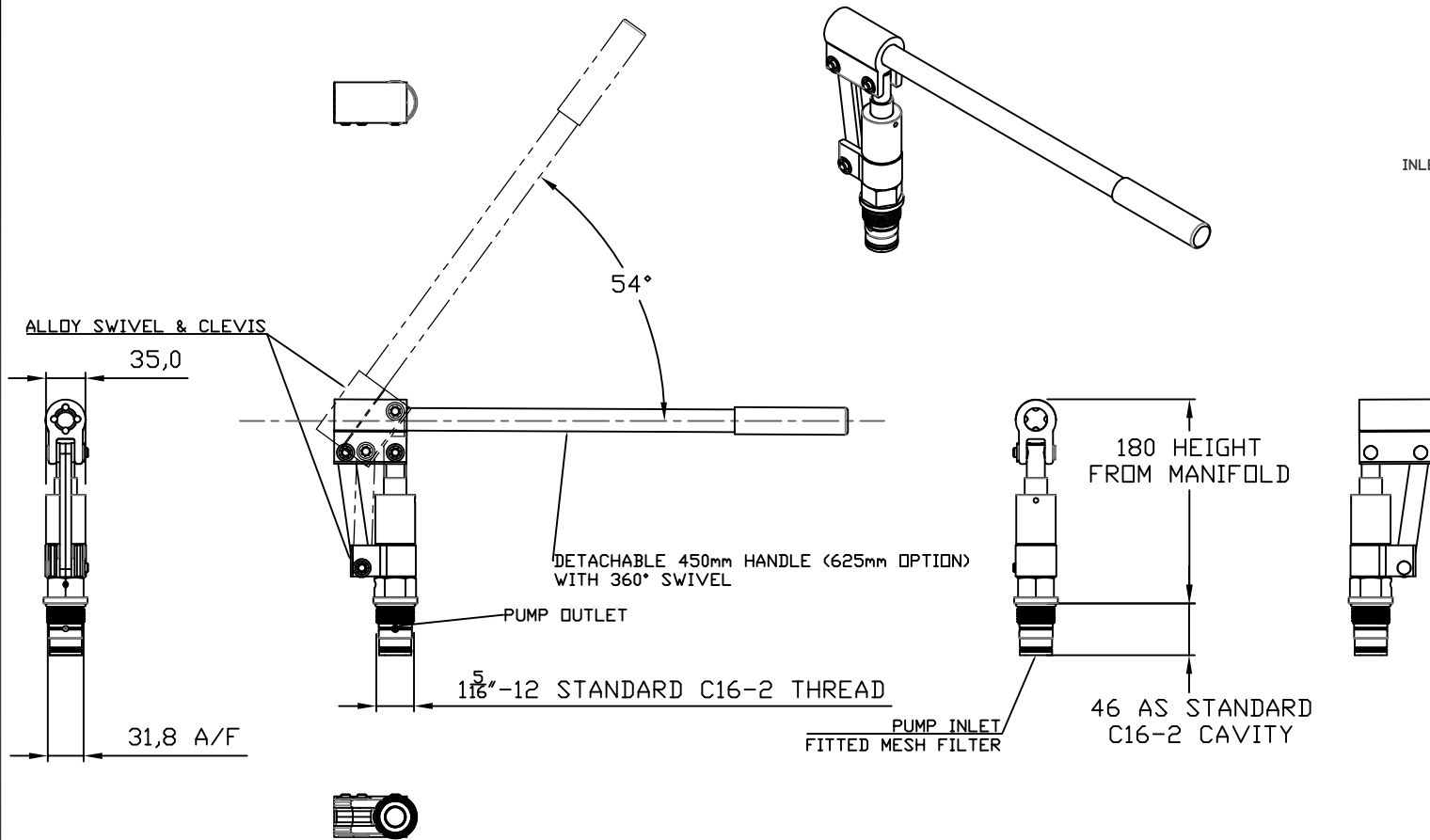


IF IN DOUBT, ASK THIRD ANGLE PROJECTION



TOLERANCES UNLESS OTHERWISE STATED
 GENERAL TOLERANCES RIGHT ANGLE BENDS &
 NO DEC. PLACE +/-1.0mm OTHER ANGLES +/-1°
 ONE DEC. PLACE +/-0.3mm MACHINED DIAMETERS
 TWO DEC. PLACE +/-0.1mm +/-0.1mm T.I.R.
 SCREW THREADS ARE ISO METRIC COARSE PITCH
 TOL. 6g/6H (MED. FIT) TO BS3643
 WIRE DIA./PLATE THICKNESS TO COMMERCIAL LIMITS
 GEOMETRICAL TOLERANCING TO BS308 PART 3



NOTES

- CARTRIDGE PUMP TO FIT C16-2 STANDARD CAVITY (2 PORT), 1 5/16-12 UNF THREAD DRG SHL 990003800
- WORKING PRESSURE 150 BAR
- FLUID- MINERAL OIL
- DISPLACEMENT 11 cm³/STROKE SINGLE ACTING- PRESSURE ON DOWN STROKE ONLY
- INLET PATH TO BE SHORT AND UNCONSTRICTED
- DIMENSIONS IN mm
- MATERIALS OF CONSTRUCTION:
 STEEL BS970
 302, 303, 316, 420, 431 STAINLESS STEEL
 PISTON ROD HARD CHROME PLATED
 ALUMINIUM 6082T6 BS1474 CLEVIS/SWIVEL
- FINISH: BRIGHT ZINC PLATE / COLOUR PASSIVATE, PHOSPHATE
- SEAL MATERIAL- NITRILE/PTFE. CONSULT FACTORY FOR ALTERNATIVE COMPOUNDS.
- TEMP RANGE -30DEG C TO 120 DEG C
- MASS 1.5 KG EXCLUDING HANDLE
 HANDLE 0.4KG
- MEMO- DRAWING ALSO 507000100
- HANDLE LOADS AT 150BAR
 WITH 450MM -4 HANDLE 461N
 WITH 625MM -6 HANDLE 332N

UNLESS OTHERWISE STATED:
 DIMENSIONS IN MILLIMETRES
 SURFACE FINISH IN MICROMETRES
 REMOVE SHARP EDGES

© COPYRIGHT 2021 SARUM HYDRAULICS LTD.



SARUM HYDRAULICS LTD.

SALISBURY, SP4 6EB, UK
 www.sarum-hydraulics.co.uk

DRAWN NO	APP
	CHKD
SCALE F SIZE	SHEET OF
CAD 2-D MTX-SA-12 / 507000100	

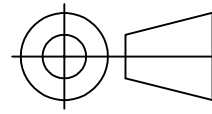
TITLE
 INSTALLATION DG: 11cc SINGLE/ACTING CARTRIDGE PUMP C16-2

DRAWING NO.
MTX-SA-11

2	2110061	BALL CHECK VALVES/SHORTER	N.O 10/21
1		FIRST ISSUE	10/21
ISSUE	D.C.N.	CHANGE DESCRIPTION & DATE	DATE IMPLEMENTED

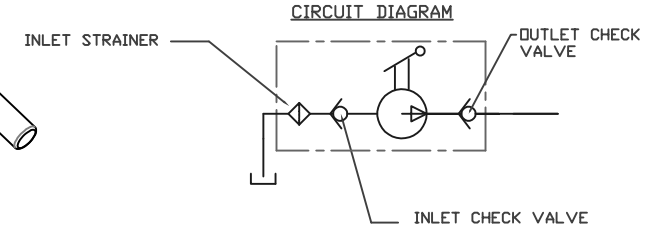
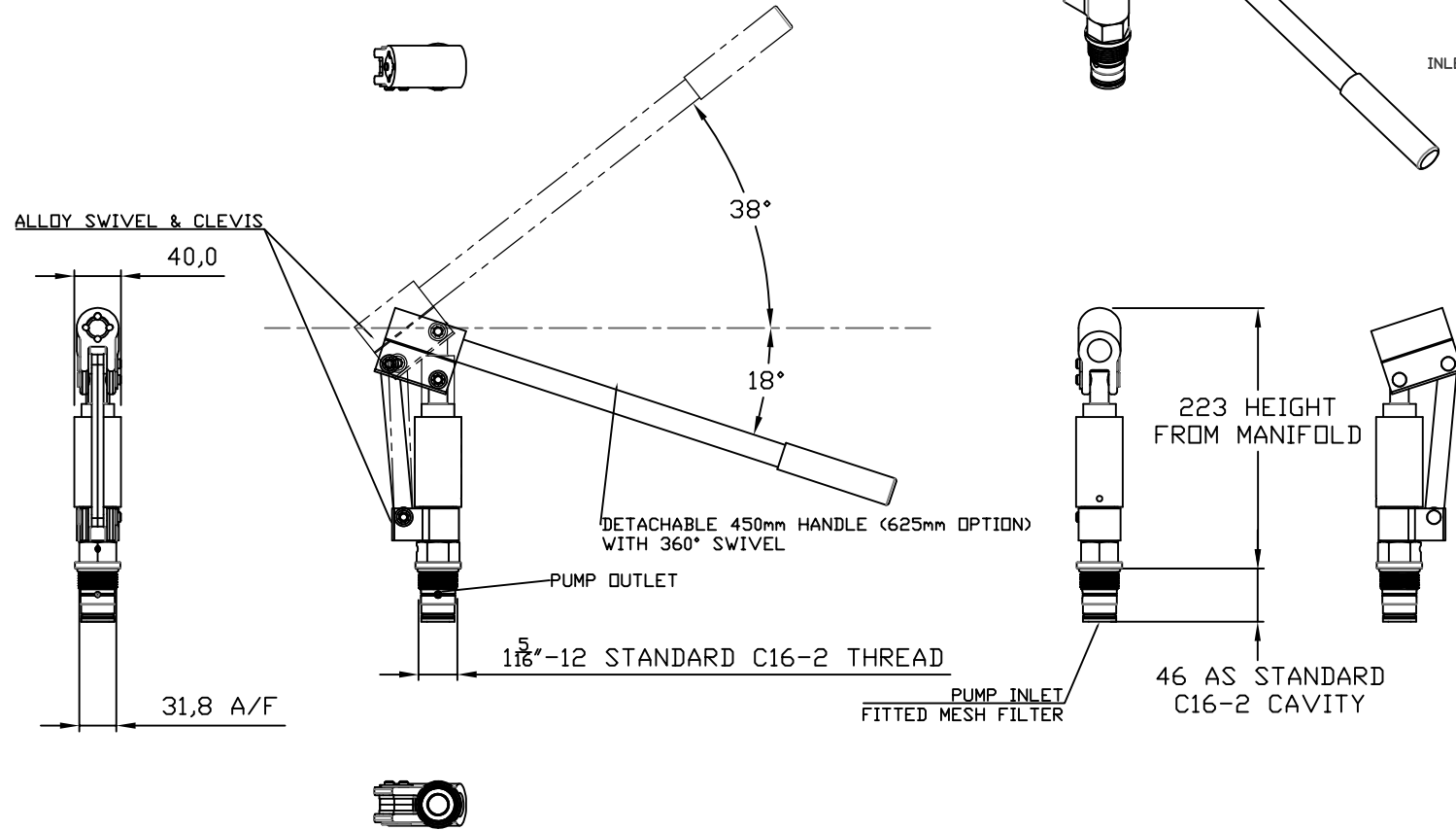
MATERIAL PER NOTES
 FINISH PER NOTES

IF IN DOUBT, ASK THIRD ANGLE PROJECTION



TOLERANCES UNLESS OTHERWISE STATED
 GENERAL TOLERANCES RIGHT ANGLE BENDS &
 NO DEC. PLACE +/-1.0mm OTHER ANGLES +/-1°
 ONE DEC. PLACE +/-0.3mm MACHINED DIAMETERS
 TWO DEC. PLACE +/-0.1mm +/-0.1mm T.I.R.

SCREW THREADS ARE ISO METRIC COARSE PITCH
 TOL. 6g/6H (MED. FIT) TO BS3643
 WIRE DIA./PLATE THICKNESS TO COMMERCIAL LIMITS
 GEOMETRICAL TOLERANCING TO BS308 PART 3



- NOTES**
- CARTRIDGE PUMP TO FIT C16-2 STANDARD CAVITY (2 PORT), 1 5/16-12 UNF THREAD DRG SHL 990003800
 - WORKING PRESSURE 80 BAR
 - FLUID- MINERAL OIL
 - DISPLACEMENT 22 cm³/STROKE SINGLE ACTING- PRESSURE ON DOWN STROKE ONLY
 - INLET PATH TO BE SHORT AND UNCONSTRICTED
 - DIMENSIONS IN mm
 - MATERIALS OF CONSTRUCTION:
 STEEL BS970
 302, 303, 316, 420, 431 STAINLESS STEEL
 PISTON ROD HARD CHROME PLATED STAINLESS STEEL
 ALUMINIUM 6082T6 BS1474 CLEVIS/SWIVEL
 - FINISH: BRIGHT ZINC PLATE / COLOUR PASSIVATE, PHOSPHATE
 - SEAL MATERIAL- NITRILE/PTFE. CONSULT FACTORY FOR ALTERNATIVE COMPOUNDS.
 - TEMP RANGE -30DEG C TO 120 DEG C
 - MASS 2 KG EXCLUDING HANDLE
 HANDLE 0.4KG
 - MEMO- DRAWING ALSO 505000200
 - HANDLE LOADS AT 80BAR
 WITH 450MM -4 HANDLE 482N
 WITH 625MM -6 HANDLE 348N

UNLESS OTHERWISE STATED:
 DIMENSIONS IN MILLIMETRES
 SURFACE FINISH IN MICROMETRES
 REMOVE SHARP EDGES

© COPYRIGHT 2021 SARUM HYDRAULICS LTD.



SARUM HYDRAULICS LTD.

SALISBURY, SP4 6EB, UK
 www.sarum-hydraulics.co.uk

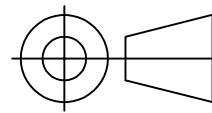
DRAWN NO	APP
	CHKD
SCALE F SIZE	SHEET OF
CAD 2-D	MTX-SA-22 / 505000200
DRAWING NO.	
MTX-SA-22	

ISSUE	D.C.N.	CHANGE DESCRIPTION & DATE	DATE IMPLEMENTED
2	2110061	BALL CHECK VALVES/SHORTER	N.O 10/21
1		FIRST ISSUE	10/21

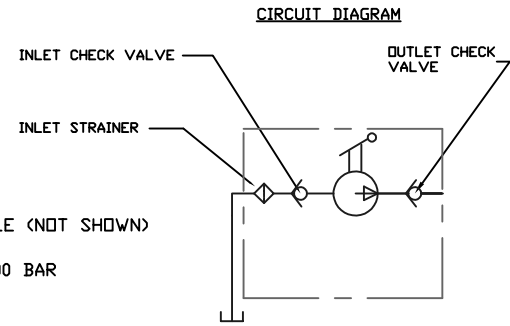
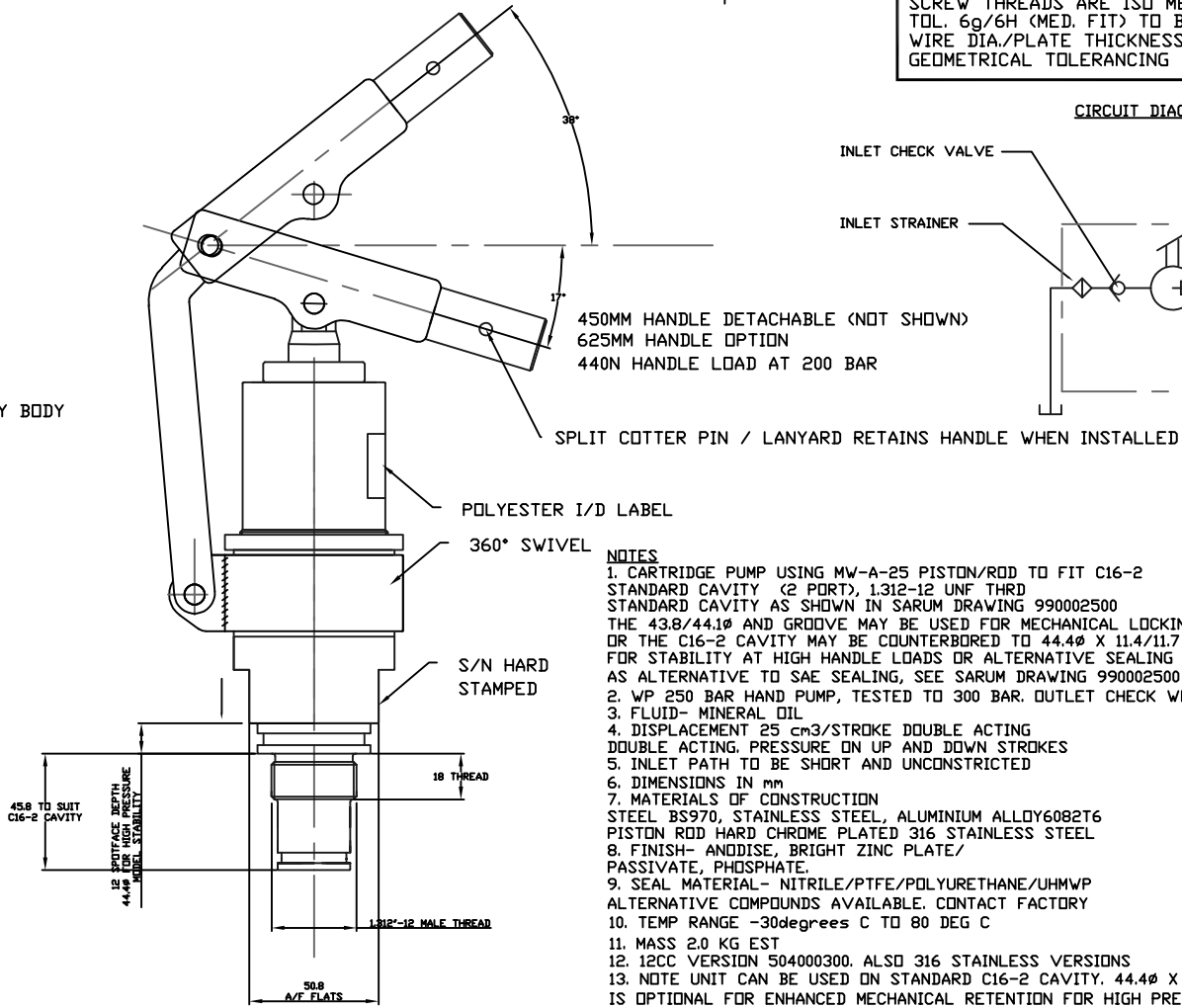
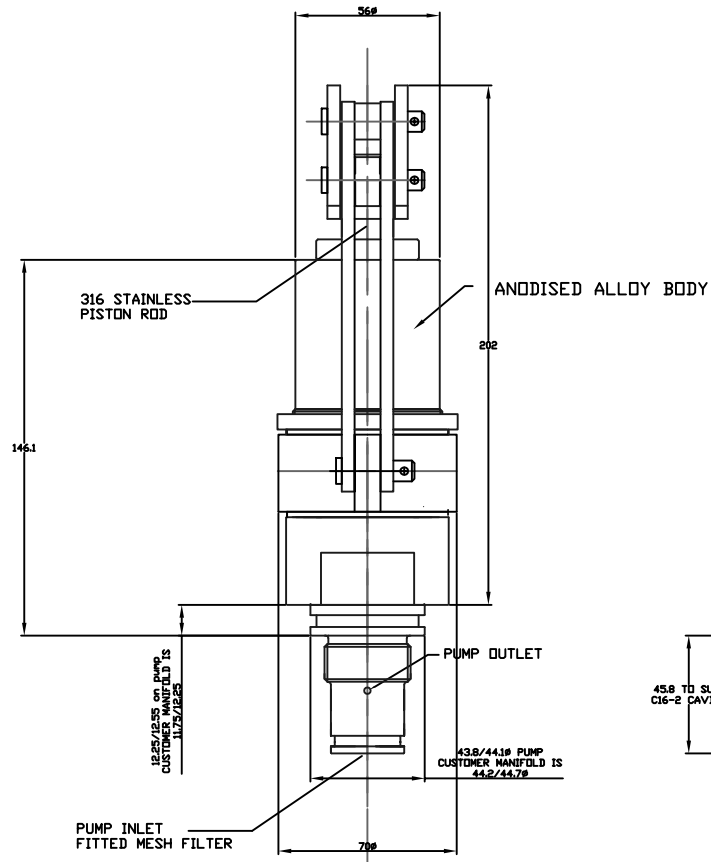
TITLE
INSTALLATION DG: 22cc SINGLE/ACTING CARTRIDGE PUMP C16-2

MATERIAL PER NOTES
 FINISH PER NOTES

IF IN DOUBT, ASK THIRD ANGLE PROJECTION



TOLERANCES UNLESS OTHERWISE STATED
 GENERAL TOLERANCES RIGHT ANGLE BENDS &
 NO DEC. PLACE +/-1.0mm OTHER ANGLES +/-1°
 ONE DEC. PLACE +/-0.3mm MACHINED DIAMETERS
 TWO DEC. PLACE +/-0.1mm CONCENTRIC WITHIN
 +/-0.1mm T.I.R.
 SCREW THREADS ARE ISO METRIC COARSE PITCH
 TOL. 6g/6H (MED. FIT) TO BS3643
 WIRE DIA./PLATE THICKNESS TO COMMERCIAL LIMITS
 GEOMETRICAL TOLERANCING TO BS308 PART 3



- NOTES**
- CARTRIDGE PUMP USING MW-A-25 PISTON/ROD TO FIT C16-2 STANDARD CAVITY (2 PORT), 1.312-12 UNF THRD STANDARD CAVITY AS SHOWN IN SARUM DRAWING 990002500
 - THE 43.8/44.18 AND GROOVE MAY BE USED FOR MECHANICAL LOCKING OF THE UNIT OR THE C16-2 CAVITY MAY BE COUNTERBORED TO 44.48 X 11.4/11.7 DEEP FOR STABILITY AT HIGH HANDLE LOADS OR ALTERNATIVE SEALING AT HIGH PRESSURES. AS ALTERNATIVE TO SAE SEALING, SEE SARUM DRAWING 990002500
 - WP 250 BAR HAND PUMP, TESTED TO 300 BAR. OUTLET CHECK WORKING TO 300 BAR
 - FLUID- MINERAL OIL
 - DISPLACEMENT 25 cm³/STROKE DOUBLE ACTING DOUBLE ACTING. PRESSURE ON UP AND DOWN STROKES
 - INLET PATH TO BE SHORT AND UNCONSTRICTED
 - DIMENSIONS IN mm
 - MATERIALS OF CONSTRUCTION STEEL BS970, STAINLESS STEEL, ALUMINIUM ALLOY6082T6 PISTON ROD HARD CHROME PLATED 316 STAINLESS STEEL
 - FINISH- ANODISE, BRIGHT ZINC PLATE/ PASSIVATE, PHOSPHATE.
 - SEAL MATERIAL- NITRILE/PDPE/POLYURETHANE/UHMWP ALTERNATIVE COMPOUNDS AVAILABLE. CONTACT FACTORY
 - TEMP RANGE -30degrees C TO 80 DEG C
 - MASS 2.0 KG EST
 - 12CC VERSION 504000300. ALSO 316 STAINLESS VERSIONS
 - NOTE UNIT CAN BE USED ON STANDARD C16-2 CAVITY. 44.48 X 12 DP CAVITY IS OPTIONAL FOR ENHANCED MECHANICAL RETENTION FOR HIGH PRESSURE USE.
 - TIGHTENING TORQUE 80-90Nm

UNLESS OTHERWISE STATED:
 DIMENSIONS IN MILLIMETRES
 SURFACE FINISH IN MICROMETRES
 REMOVE SHARP EDGES

© COPYRIGHT 2021 SARUM HYDRAULICS LTD.



SARUM HYDRAULICS LTD.

SALISBURY, SP4 6EB, UK
 www.sarum-hydraulics.co.uk

TITLE
 INSTALLATION DRAWING 25CC CARTRIDGE PUMP D/ACTING ALLOY

DRAWN JF	APP
	CHKD
SCALE F SIZE	SHEET OF
CAD 2-D	MTX-DA-25 / 504000100
DRAWING NO.	

MTX-DA-25

1	FIRST ISSUE	09/21
ISSUE	D.C.N.	CHANGE DESCRIPTION & DATE
		DATE IMPLEMENTED

MATERIAL PER NOTES
 FINISH PER NOTES