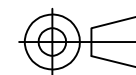
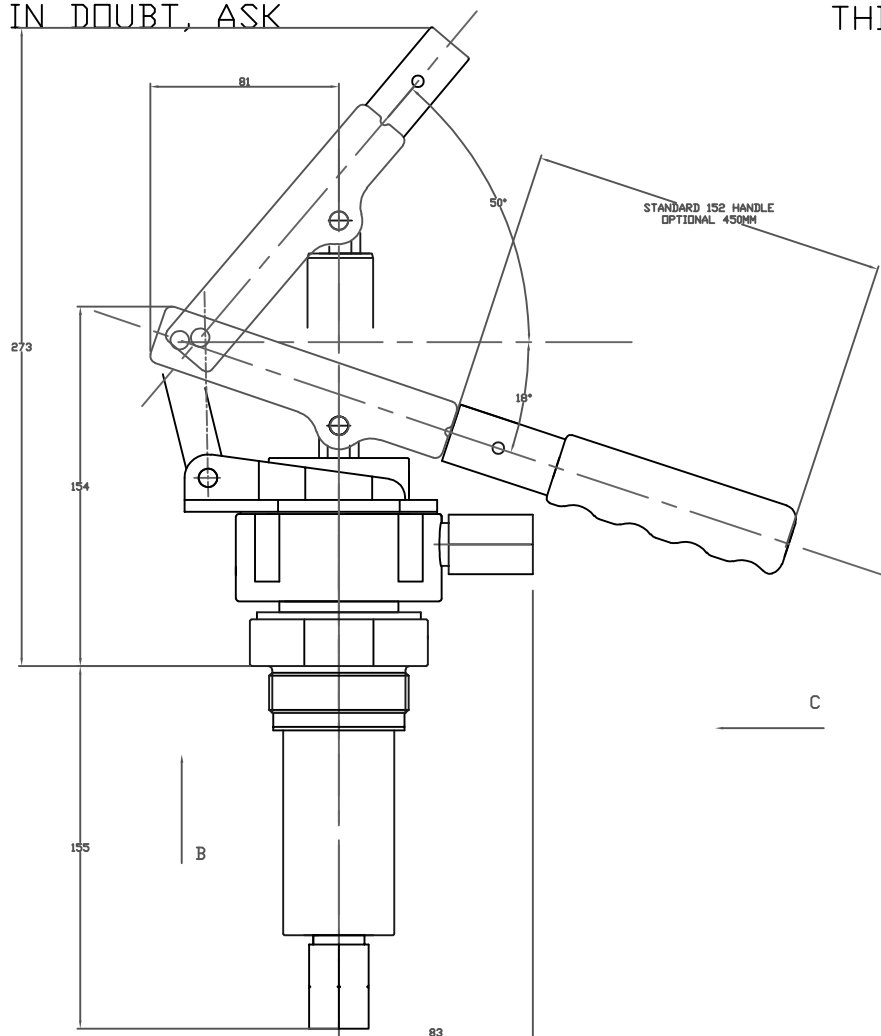


IF IN DOUBT, ASK

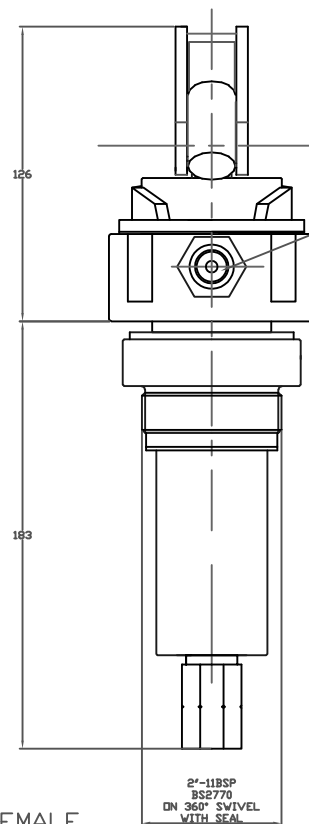
THIRD ANGLE PROJECTION



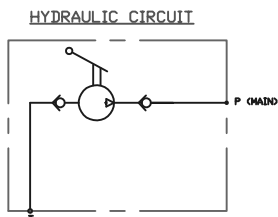
TOLERANCES UNLESS OTHERWISE STATED
 GENERAL TOLERANCES RIGHT ANGLE BENDS &
 NO DEC. PLACE +/- 0.1mm OTHER ANGLES +/- 1°
 ONE DEC. PLACE +/- 0.3mm MACHINED DIAMETERS
 TWO DEC. PLACE +/- 0.1mm CONCENTRIC WITHIN
 +/- 0.1mm T.I.R.
 SCREW THREADS ARE ISO METRIC COARSE PITCH
 TOL. 6g/6h (MED. FIT) TO BS3643
 WIRE DIA./PLATE THICKNESS TO COMMERCIAL LIMITS
 GEOMETRICAL TOLERANCING TO BS308 PART 3



VIEW ON C
 HANDLE REMOVED FOR CLARITY

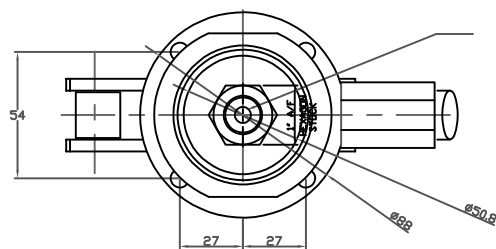


OUTLET PORT
 G3/8 FEMALE
 OPTIONAL ALTERNATIVE THREADS



HYDRAULIC CIRCUIT

INLET CONNECTION
 3/8BSPP or 3/8NPT FEMALE
 NO STRAINER FITTED



VIEW ON B
 HANDLE REMOVED FOR CLARITY

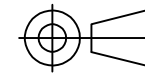
- NOTES.
1. UNIT MANUFACTURED FROM SARUM HYDRAULICS MICRODAC PUMP COMPONENTS.
 2. MATERIALS OF CONSTRUCTION;
 BODY 316 STAINLESS
 BARREL 316 STAINLESS
 ALL OTHER WETTED PARTS 316 STAINLESS OR POLYMER
 ACETAL, NYLON, PVC.
 SEALS PTFE, NITRILE, UHMWP
 3. DIMENSIONS IN MM
 4. WORKING FLUID-WATER, OIL, POTABLE WATER
 5. MASS 6KG
 6. INLET CHECK VALVE-SOFT SEAT, REPLACEABLE SEAT
 7. OUTLET CHECK VALVE- STAINLESS STEEL POPPET,
 8. NO INLET STRAINER FITTED
 9. DISPLACEMENT/PRESSURE 100CC TO 25 BAR SINGLE ACTING
 10. FLOW RATE 3 LITRES/MINUTE AT 30 STROKES/MINUTE
 11. 347000300 IS 100CC HAND PUMP
 12. 418000100 IS 100CC HAND DRUM PUMP FITTED BRONZE CW307G 360° DRUM FITTING

UNLESS OTHERWISE STATED
 DIMENSIONS IN MILLIMETRES
 SURFACE FINISH IN MICROMETRES
 REMOVE SHARP EDGES

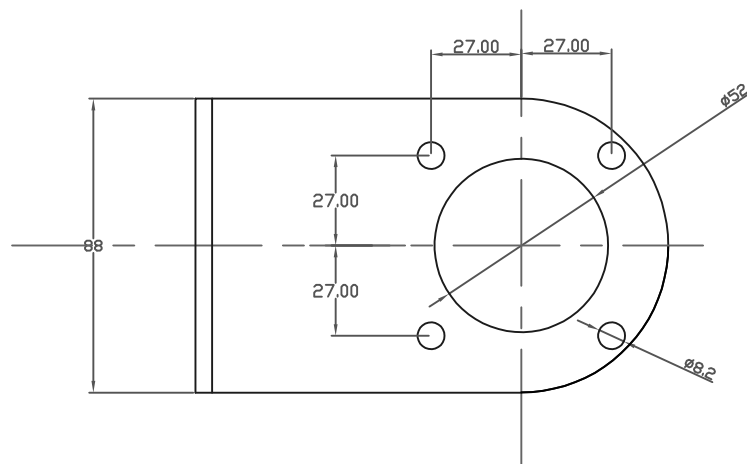
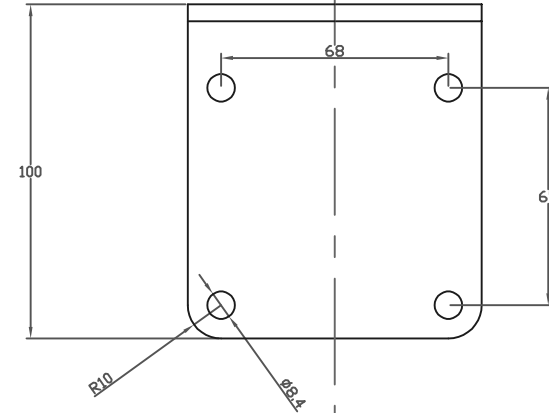
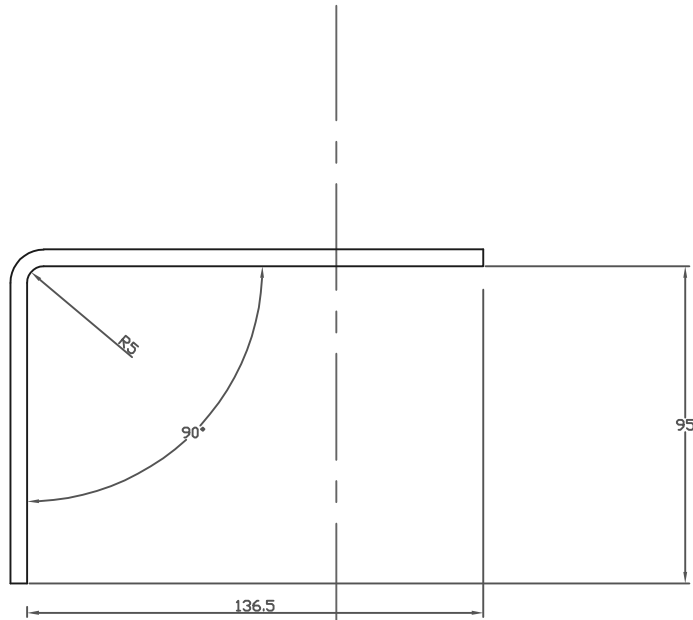
				© COPYRIGHT 1999 SARUM HYDRAULICS LTD.		SARUM SARUM HYDRAULICS LTD.		DRAWN: JGF	APP
				P.O. BOX 48, SALISBURY SP1 3YB TEL. 01722 328388 FAX. 01722 414307		HYDRAULICS		SCALE: F	SIZE: SHEET OF
				TITLE HAND DRUM PUMP 100CC LOW PRESSURE		MATERIAL PER NOTE		CAD 2-D 418000100	DRAWING NO.
2	2111021	CHANGED HOSE TAIL TO 3/8BSPP FEMALE		N.D	11/21	418000100			
1		FIRST ISSUE		04/14					
ISS.	D.C.N.	CHANGE DESCRIPTION & DATE		DATE IMPLEMENTED	FINISH -				

IF IN DOUBT, ASK

THIRD ANGLE PROJECTION



TOLERANCES UNLESS OTHERWISE STATED
 GENERAL TOLERANCES RIGHT ANGLE BENDS &
 NO DEC. PLACE ± 0.10 mm OTHER ANGLES $\pm 0.1^\circ$
 ONE DEC. PLACE ± 0.3 mm MACHINED DIAMETERS
 TWO DEC. PLACE ± 0.1 mm CONCENTRIC WITHIN
 ± 0.1 mm T.I.R.
 SCREW THREADS ARE ISO METRIC COARSE PITCH
 TOL. 6g/6H (MED. FIT) TO BS3643
 WIRE DIA./PLATE THICKNESS TO COMMERCIAL LIMITS
 GEOMETRICAL TOLERANCING TO BS308 PART 3



© COPYRIGHT 1999 SARUM HYDRAULICS LTD.

						SARUM HYDRAULICS LTD. P.O. BOX 48, SALISBURY SP1 3YB TEL. 01722 328388 FAX. 01722 414307	DRAWN JGF	APP
							SCALE F SIZE	SHEET OF
					TITLE BRACKET 316	MATERIAL 5mm 316 stainless	CAD 2-D 347012000	DRAWING NO. 347012000
1		FIRST ISSUE		08/15	FINISH CLEAN, NO DAMAGE			
ISS.	D.C.N.	CHANGE DESCRIPTION & DATE		DATE IMPLEMENTED				

UNLESS OTHERWISE STATED:
 DIMENSIONS IN MILLIMETRES
 SURFACE FINISH IN MICROMETRES
 REMOVE SHARP EDGES