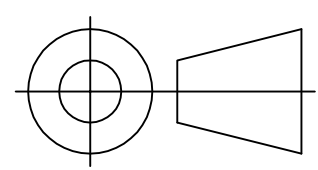
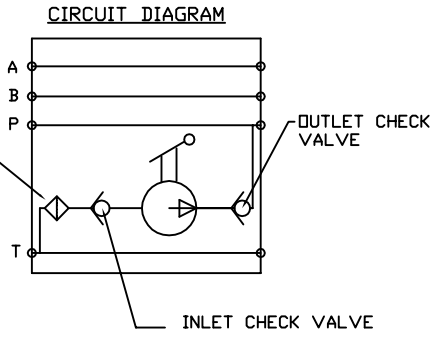
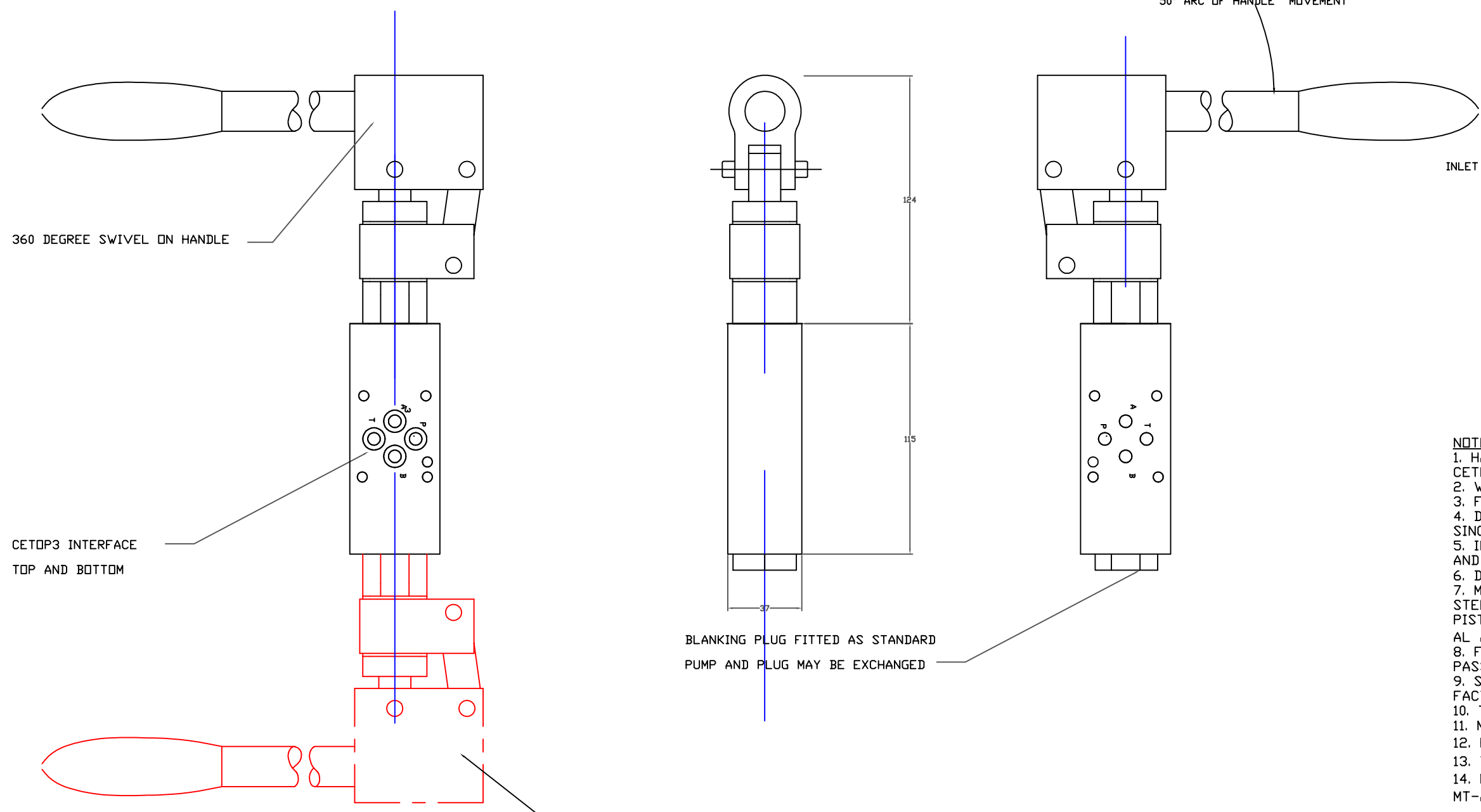


IF IN DOUBT, ASK THIRD ANGLE PROJECTION



TOLERANCES UNLESS OTHERWISE STATED
 GENERAL TOLERANCES RIGHT ANGLE BENDS &
 NO DEC. PLACE +/-1.0mm OTHER ANGLES +/-1°
 ONE DEC. PLACE +/-0.3mm MACHINED DIAMETERS
 TWO DEC. PLACE +/-0.1mm CONCENTRIC WITHIN
 +/-0.1mm T.I.R.
 SCREW THREADS ARE ISO METRIC COARSE PITCH
 TOL. 6g/6H (MED. FIT) TO BS3643
 WIRE DIA./PLATE THICKNESS TO COMMERCIAL LIMITS
 GEOMETRICAL TOLERANCING TO BS308 PART 3



- NOTES**
- HAND PUMP INTEGRATED INTO CETOP 3 SLICE BLOCK
 - WP 250 BAR
 - FLUID- MINERAL OIL
 - DISPLACEMENT 5.6 cm³/STROKE
 - SINGLE ACTING. PRESSURE ON DOWN STROKE
 - INLET PATH TO BE SHORT AND UNCONSTRICTED
 - DIMENSIONS IN mm
 - MATERIALS OF CONSTRUCTION
 STEEL BS970
 PISTON ROD HARD CHROME PLATED
 AL ALLOY 6082T6 BS1474
 - FINISH- BRIGHT ZINC PLATE/ COLOUR PASSIVATE, PHOSPHATE.
 - SEAL MATERIAL- NITRILE/PTFE. CONSULT FACTORY FOR ALTERNATIVE COMPOUNDS.
 - TEMP RANGE -20DEG C TO 80 DEG C
 - MASS 1.2 KG
 - PUMP AND BLANKING PLUG MAY BE REVERSED
 - TWO PUMPS CAN BE FITTED- CONSULT FACTORY
 - MODEL SHOWN IS MT-A-56 5.6CC
 MT-A-12 CAN ALSO BE FITTED

UNLESS OTHERWISE STATED:
 DIMENSIONS IN MILLIMETRES
 SURFACE FINISH IN MICROMETRES
 REMOVE SHARP EDGES

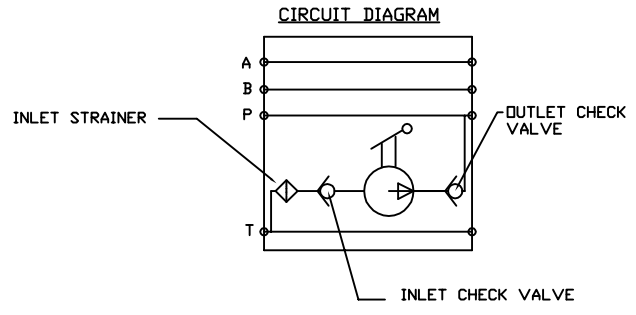
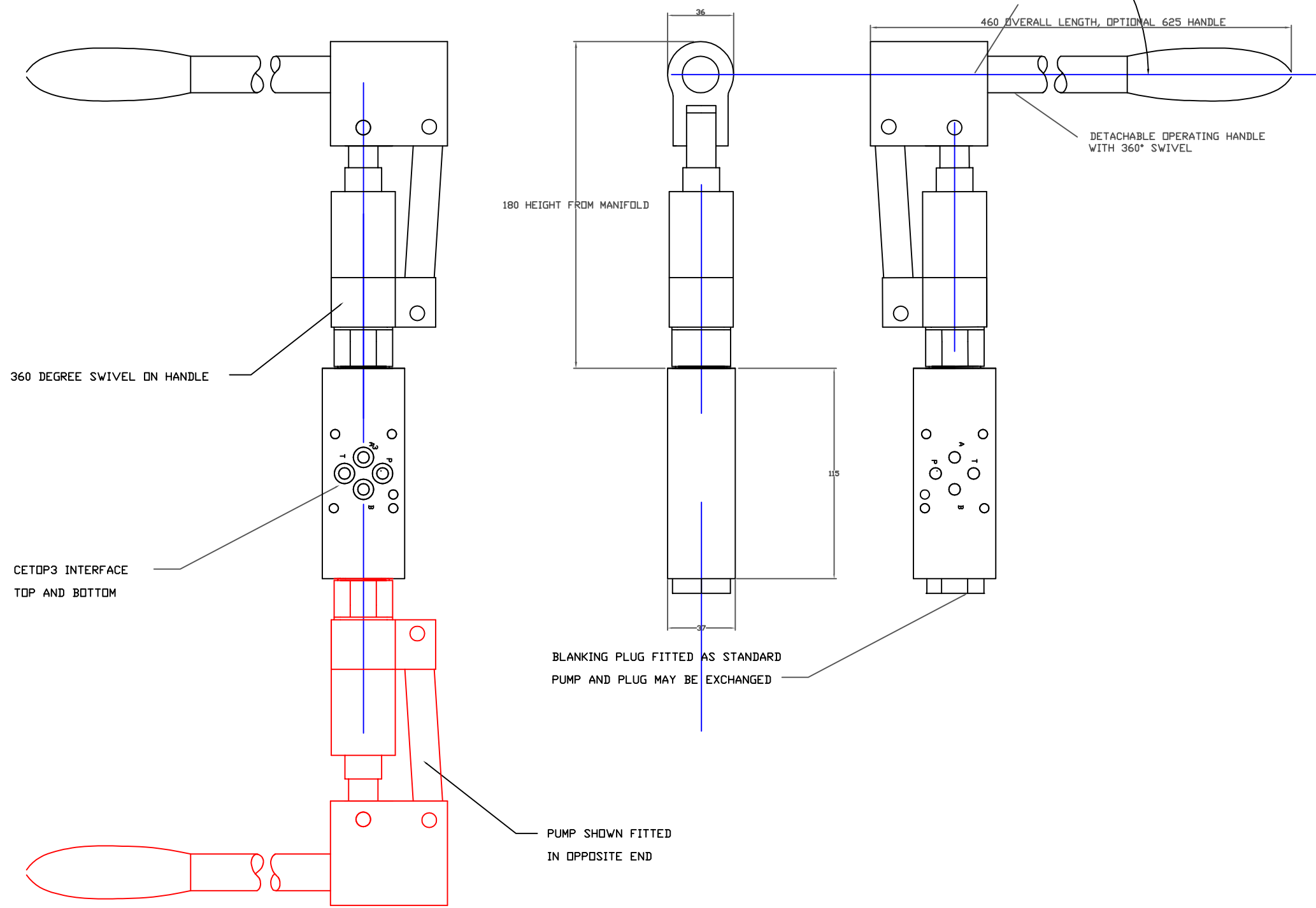
© COPYRIGHT 2019 SARUM HYDRAULICS LTD.

					SARUM HYDRAULICS LTD.		DRAWN JGF	APP
					P.O. BOX 48, SALISBURY SP1 3YB TEL. 01722 328388 FAX. 01722 414307			CHKD
						SCALE FULL	SHEET	OF
						CAD 2-D 361000100		
3	1401091	MIRROR BODY, 2 POSITIONS	01/14	TITLE INSTALLATION DRAWING 5.6cc CETOP3 MANIFOLD PUMP MATERIAL PER NOTE FINISH PER NOTE		DRAWING NO.		
2	1104041	CLEVIS WAS 52	04/11			361000100		
1		FIRST ISSUE	08/97					
ISSUE	D.C.N.	CHANGE DESCRIPTION & DATE	DATE IMPLEMENTED					

IF IN DOUBT, ASK

THIRD ANGLE PROJECTION

TOLERANCES UNLESS OTHERWISE STATED
 GENERAL TOLERANCES RIGHT ANGLE BENDS &
 NO DEC. PLACE +/-1.0mm OTHER ANGLES +/-1°
 ONE DEC. PLACE +/-0.3mm MACHINED DIAMETERS
 TWO DEC. PLACE +/-0.1mm CONCENTRIC WITHIN
 +/-0.1mm T.I.R.
 SCREW THREADS ARE ISO METRIC COARSE PITCH
 TOL. 6g/6H (MED. FIT) TO BS3643
 WIRE DIA./PLATE THICKNESS TO COMMERCIAL LIMITS
 GEOMETRICAL TOLERANCING TO BS308 PART 3



- NOTES**
- HAND PUMP INTEGRATED INTO CETOP 3 SLICE BLOCK
 - WP 200 BAR
 - FLUID- MINERAL OIL
 - DISPLACEMENT 8 cm³/STROKE
SINGLE ACTING. PRESSURE ON DOWN STROKE
 - INLET PATH TO BE SHORT AND UNCONSTRICTED
 - DIMENSIONS IN mm
 - MATERIALS OF CONSTRUCTION
STEEL BS970
PISTON ROD HARD CHROME PLATED
AL ALLOY 6082T6 BS1474
 - FINISH- BRIGHT ZINC PLATE/ COLOUR PASSIVATE, PHOSPHATE.
 - SEAL MATERIAL- NITRILE/PTFE. CONSULT FACTORY FOR ALTERNATIVE COMPOUNDS.
 - TEMP RANGE -20DEG C TO 80 DEG C
 - MASS 1.2 KG
 - PUMP AND BLANKING PLUG MAY BE REVERSED
 - TWO PUMPS CAN BE FITTED- CONSULT FACTORY
 - MODEL SHOWN IS MT-A-8 8CC
MT-A-56 or MT-A-80 CAN ALSO BE FITTED

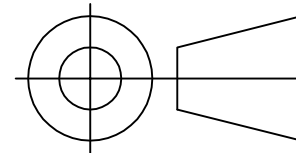
UNLESS OTHERWISE STATED:
 DIMENSIONS IN MILLIMETRES
 SURFACE FINISH IN MICROMETRES
 REMOVE SHARP EDGES

© COPYRIGHT 2019 SARUM HYDRAULICS LTD.

					SARUM HYDRAULICS LTD.		DRAWN JGF	APP
					P.O. BOX 48, SALISBURY SP1 3YB TEL. 01722 328388 FAX. 01722 414307			CHKD
				TITLE		SCALE FULL		SHEET OF
				INSTALLATION DRAWING 8cc CETOP3 MANIFOLD PUMP		CAD 2-D 361000300		
				MATERIAL PER NOTE		DRAWING NO.		
1		FIRST ISSUE	04/14	FINISH PER NOTE		361000300		
ISSUE	D.C.N.	CHANGE DESCRIPTION & DATE	DATE IMPLEMENTED					

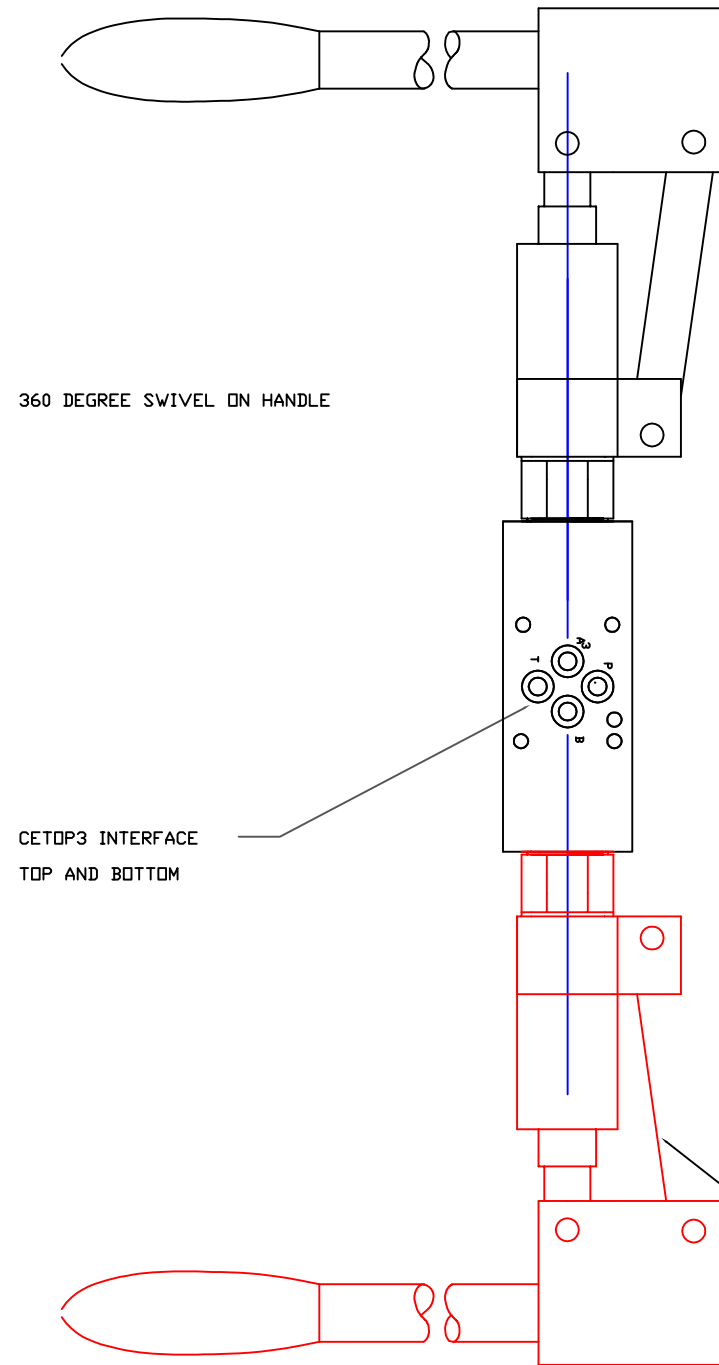
IF IN DOUBT, ASK

THIRD ANGLE PROJECTION



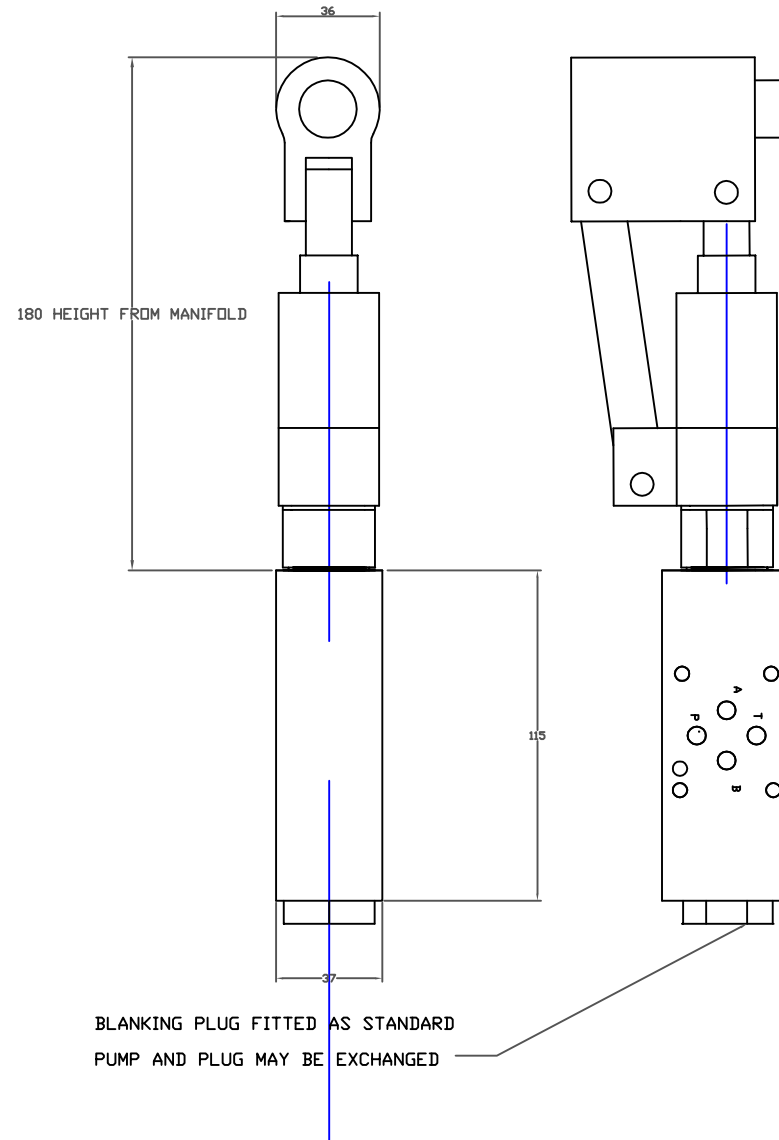
TOLERANCES UNLESS OTHERWISE STATED
 GENERAL TOLERANCES RIGHT ANGLE BENDS &
 NO DEC. PLACE +/-1.0mm OTHER ANGLES +/-1°
 ONE DEC. PLACE +/-0.3mm MACHINED DIAMETERS
 TWO DEC. PLACE +/-0.1mm CONCENTRIC WITHIN
 +/-0.1mm T.I.R.
 SCREW THREADS ARE ISO METRIC COARSE PITCH
 TOL. 6g/6H (MED. FIT) TO BS3643
 WIRE DIA./PLATE THICKNESS TO COMMERCIAL LIMITS
 GEOMETRICAL TOLERANCING TO BS308 PART 3

50° ARC OF HANDLE MOVEMENT



360 DEGREE SWIVEL ON HANDLE

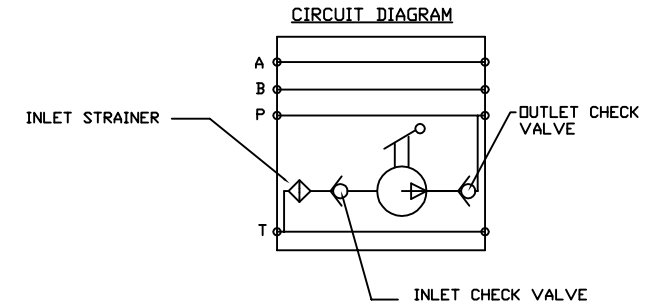
CETOP3 INTERFACE
TOP AND BOTTOM



180 HEIGHT FROM MANIFOLD

BLANKING PLUG FITTED AS STANDARD
PUMP AND PLUG MAY BE EXCHANGED

PUMP SHOWN FITTED
IN OPPOSITE END



NOTES

- HAND PUMP INTEGRATED INTO CETOP 3 SLICE BLOCK
- WP 150 BAR
- FLUID- MINERAL OIL
- DISPLACEMENT 12 cm³/STROKE
SINGLE ACTING. PRESSURE ON DOWN STROKE
- INLET PATH TO BE SHORT AND UNCONSTRICTED
- DIMENSIONS IN mm
- MATERIALS OF CONSTRUCTION
STEEL BS970
PISTON ROD HARD CHROME PLATED
AL ALLOY 6082T6 BS1474
- FINISH- BRIGHT ZINC PLATE/ COLOUR PASSIVATE, PHOSPHATE.
- SEAL MATERIAL- NITRILE/PTFE. CONSULT FACTORY FOR ALTERNATIVE COMPOUNDS.
- TEMP RANGE -20DEG C TO 80 DEG C
- MASS 1.2 KG
- PUMP AND BLANKING PLUG MAY BE REVERSED
- TWO PUMPS CAN BE FITTED- CONSULT FACTORY
- MODEL SHOWN IS MT-A-12 12CC
MT-A-56 CAN ALSO BE FITTED

UNLESS OTHERWISE STATED:
DIMENSIONS IN MILLIMETRES
SURFACE FINISH IN MICROMETRES
REMOVE SHARP EDGES

© COPYRIGHT 2019 SARUM HYDRAULICS LTD.

					SARUM HYDRAULICS LTD.		DRAWN JGF	APP
					P.O. BOX 48, SALISBURY SP1 3YB TEL. 01722 328388 FAX. 01722 414307			CHKD
				TITLE		SCALE FULL		SHEET OF
				INSTALLATION DRAWING 12cc CETOP3 MANIFOLD PUMP		CAD 2-D 361000200		
				MATERIAL PER NOTE		DRAWING NO.		
				FINISH PER NOTE		361000200		
1		FIRST ISSUE	04/14					
ISSUE	D.C.N.	CHANGE DESCRIPTION & DATE	DATE IMPLEMENTED					