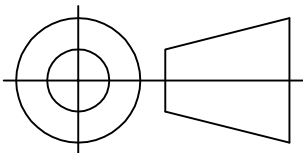
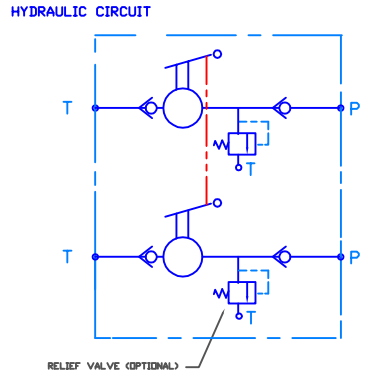
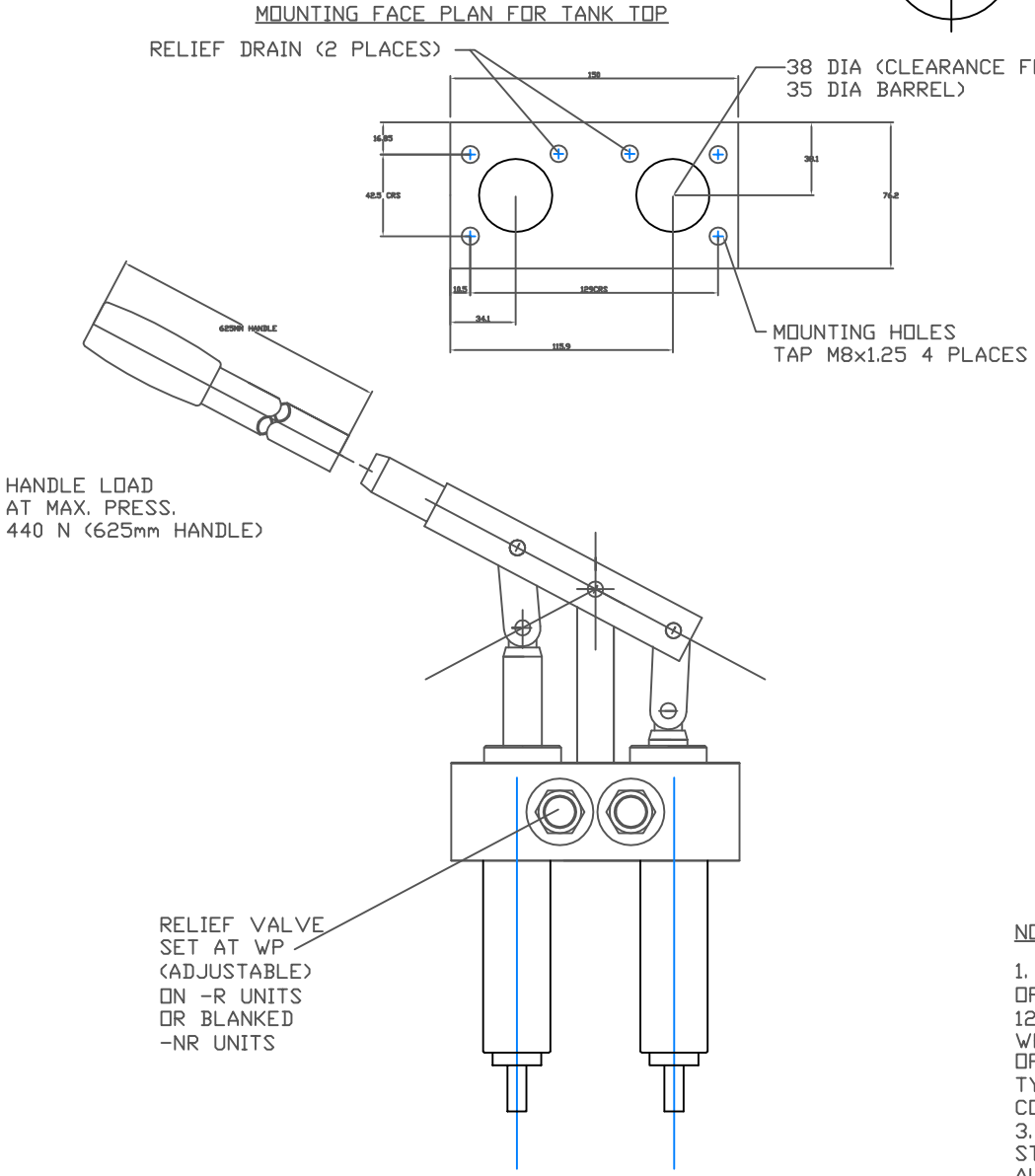
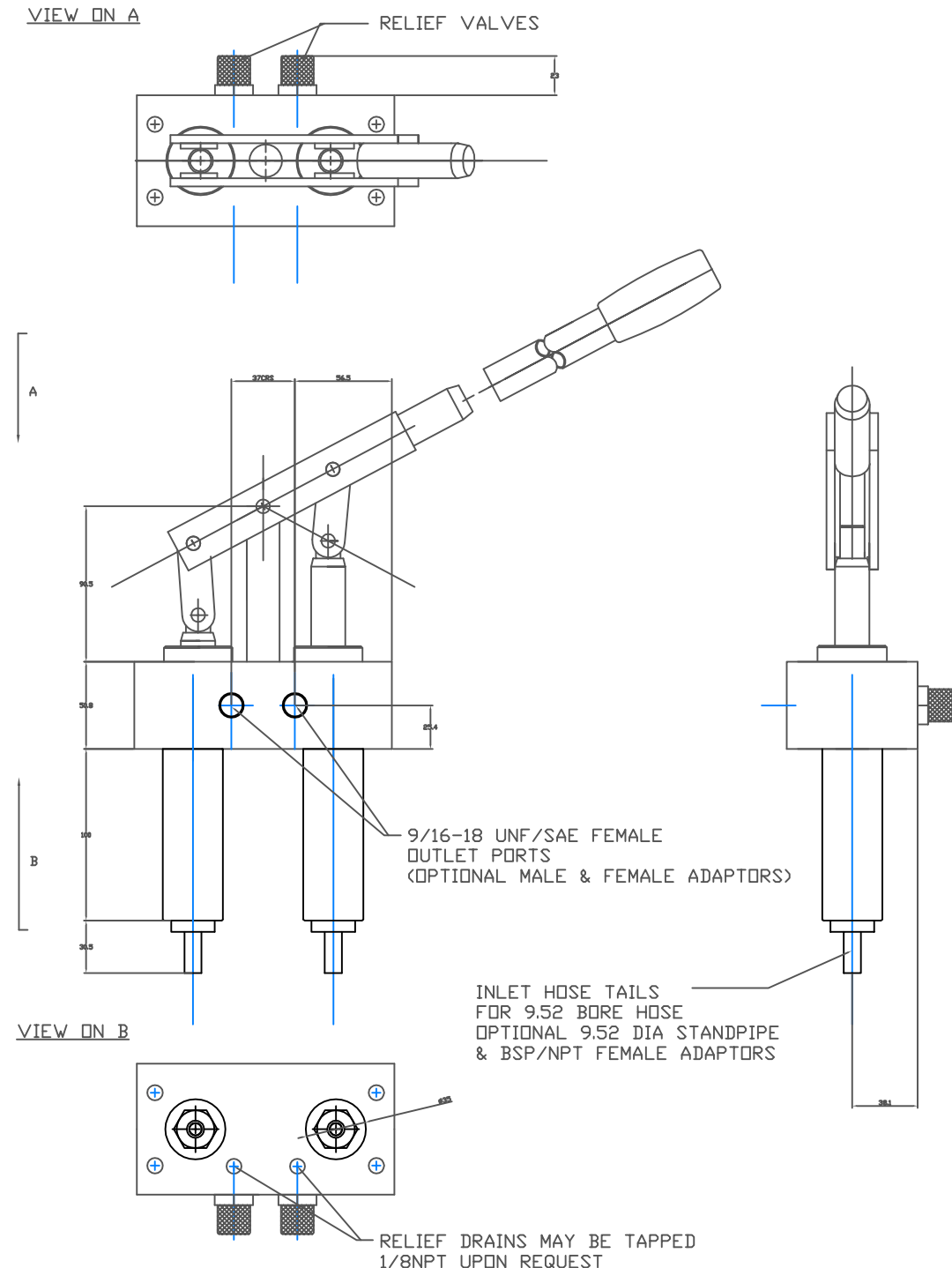


IF IN DOUBT, ASK THIRD ANGLE PROJECTION




TOLERANCES UNLESS OTHERWISE STATED  
GENERAL TOLERANCES  
NO DEC. PLACE  $\pm 1.0\text{mm}$   
ONE DEC. PLACE  $\pm 0.3\text{mm}$   
TWO DEC. PLACE  $\pm 0.1\text{mm}$   
RIGHT ANGLE BENDS &  
OTHER ANGLES  $\pm 1^\circ$   
MACHINED DIAMETERS  
CONCENTRIC WITHIN  
 $\pm 0.1\text{mm}$  T.I.R.  
SCREW THREADS ARE ISO METRIC COARSE PITCH  
TOL. 6g/6h (MED. FIT) TO BS3643  
WIRE DIA./PLATE THICKNESS TO COMMERCIAL LIMITS  
GEOMETRICAL TOLERANCING TO BS308 PART 3



- NOTES
1. PUMP CONFIGURATION- TWO SEPARATE 12CC HAND PUMPS IN SINGLE BODY OPERATED BY COMMON HANDLE  
12cc/DOUBLE STROKE TO 400 BAR PER PUMP, 200 BAR MAX IF USED AS TANDEM WHEN USED AS TANDEM PUMP, 200 BAR PER PUMP BASED ON HANDLE LOAD OF 440N USING 625MM HANDLE  
TYPE MH-SW-12+12-0-NG-R-625 DESCRIBES THIS UNIT IN STAINLESS/BRONZE CONSULT FACTORY FOR ANODISED ALLOY OR STEEL VERSIONS
  2. MATERIALS OF CONSTRUCTION ON ALL UNITS  
STAINLESS STEEL BS970 316,303,304,302,431,420  
ALUMINIUM BRONZE DGS1043/CA104  
NYLON, ACETAL, PVC  
SEALS: NITRILE, FILLED PTFE, PTFE
  3. MASS 7 KG
  4. DIMENSIONS IN mm
  5. SPECIFICATION SUBJECT TO REVISION
  6. FOR ALTERNATIVE FLUIDS/SEAL COMPOUNDS -CONSULT FACTORY
  7. OPERATING TEMPERATURE RANGE -20 TO +80 DEG C SUBJECT TO FLUID
  8. STANDARD UNIT SUPPLIED WITH INLET FILTERS/DIP TUBES, GASKET & MTG SCREWS
  9. SYSTEM DESIGN, INSTALLATION, USE & MAINTENANCE TO BE IN ACCORDANCE WITH STATUTORY & OTHER REQUIREMENTS

UNLESS OTHERWISE STATED:  
DIMENSIONS IN MILLIMETRES  
SURFACE FINISH IN MICROMETRES  
REMOVE SHARP EDGES

© COPYRIGHT 2004 SARUM HYDRAULICS LTD.

					SARUM HYDRAULICS LTD.  P.O. BOX 48, SALISBURY SP1 3YB TEL. 01722 328388 FAX. 01722 414307	DRAWN JGF	APP
							CHKD
						SCALE FULL	SHEET OF
						CAD 2-D 279000100	
4	1212091	DIMENSION CORRECTED	12/12	TITLE INSTALLATION DG TANDEM PUMP	MATERIAL - FINISH -	DRAWING NO. 279000100	
3	0908162	DISPLACEMENT CORRECTED	08/09				
2	0908141	FACES ERROR CORRECTED	08/09				
1		FIRST ISSUE	04/04				
ISSUE	D.C.N.	CHANGE DESCRIPTION & DATE	DATE IMPLEMENTED				