

## Hydraulic Fittings/Couplings Index for drawings

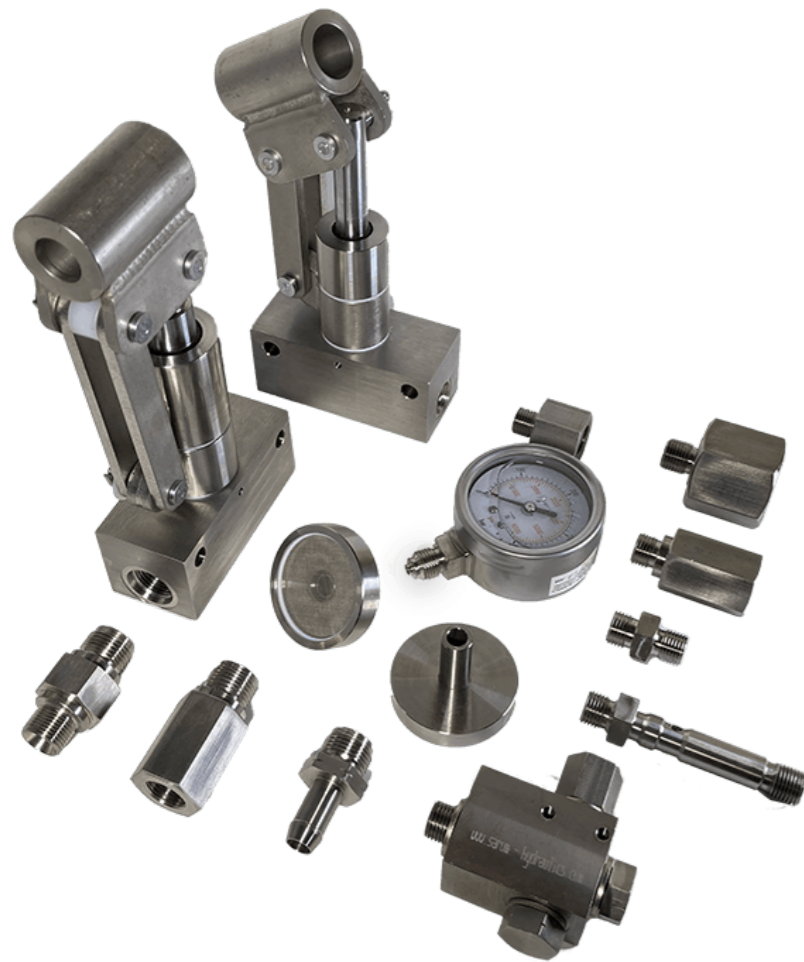
What do we offer?

Cost effective special 316 stainless Hydraulic fittings. Normally of our manufacture where we have replaced two or three catalogue fittings with one piece at lower cost, smaller envelope and less leak risk.

These include Inlet and Outlet fittings for our PPS component 316 stainless hand pump.

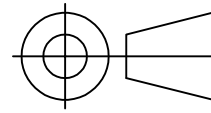
Inlet fittings for our PPS unit are 3/4-16UNF Male.  
Outlet fittings for our PPS unit are 9/16-18UNF Male.

Consult the factory for additional items.



Page	Order code	Description
2	908118300	9/16-18UNF Male to 1/4BSP Female(Manometer Gauge)
3	007044300	9/16-18UNF Male to 3/8BSP Female
4	007045500	9/16-18UNF Male to 1/2BSP Female
5	908108200	9/16-18UNF Male to 1/4BSP Male Coned
6	007024400	9/16-18UNF Male to 1/4NPT Female
7	007024500	9/16-18UNF Male to 3/8NPT Female
8	007048600	9/16-18UNF Male to 1/2NPT Female
9	908123100	9/16-18UNF Male to -6JIC Male
10	908124100	9/16-18UNF Male to 1/4 Tube Compression Twin Ferrule
11	489002100	3/4-16UNF Male to 10mm HOSE TAIL
12	489001800	3/4-16UNF Male to 1/4BSP Female
13	489001700	3/4-16UNF Male to 3/8BSP Female
14	489001900	3/4-16UNF Male to 1/4BSP Male Coned
15	489002000	3/4-16UNF Male to 3/8BSP Male Coned
16	007024200	3/4-16UNF Male to 1/4NPT Female
17	489001600	3/4-16UNF Male to 3/8NPT Female
18	489002400	3/4-16UNF Male to -8JIC Male
19	908169300	3/4-16UNF Male to 3/8 Tube Compression Twin Ferrule
20	908104300	-4JIC Male to -5JIC Female
21	908109600	-4JIC Male to 1/4BSP Female(Manometer Gauge)
22	901024009	1/4BSP Male Coned to 3/8BSP Female(Manometer Gauge)
23	136002000	10-32UNS Female to M10x1 Female flat bottom NATO swivel connector
24	136002100	10-32UNS Female to 1/4BSP Female flat bottom NATO swivel connector

IF IN DOUBT, ASK THIRD ANGLE PROJECTION

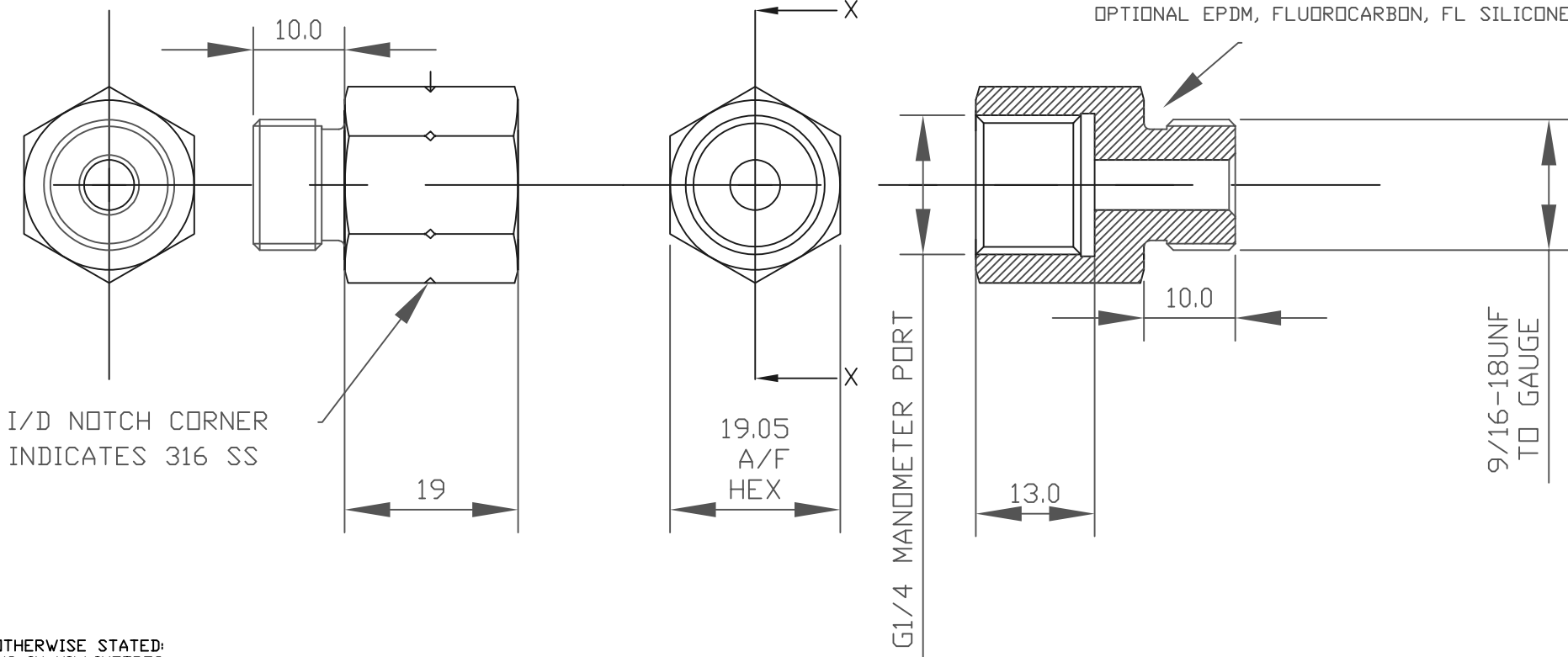


TOLERANCES UNLESS OTHERWISE STATED  
 GENERAL TOLERANCES RIGHT ANGLE BENDS &  
 NO DEC. PLACE +/-1.0mm OTHER ANGLES +/-1°  
 ONE DEC. PLACE +/-0.3mm MACHINED DIAMETERS  
 TWO DEC. PLACE +/-0.1mm CONCENTRIC WITHIN  
 +/-0.1mm T.I.R.  
 SCREW THREADS ARE ISO METRIC COARSE PITCH  
 TOL. 6g/6H (MED. FIT) TO BS3643  
 WIRE DIA./PLATE THICKNESS TO COMMERCIAL LIMITS  
 GEOMETRICAL TOLERANCING TO BS308 PART 3

	PART DESCRIPTION
908118300	STOCK PART
908118309	DRAWING FOR CODIFICATION
	ORDER ON "00" NUMBER

SECTION X-X

BS906 O RING NITRILE SUPPLIED FOR SAE SEAL  
 OPTIONAL EPDM, FLUOROCARBON, FL SILICONE



I/D NOTCH CORNER  
 INDICATES 316 SS

UNLESS OTHERWISE STATED:  
 DIMENSIONS IN MILLIMETRES  
 SURFACE FINISH IN MICROMETRES  
 REMOVE SHARP EDGES

© COPYRIGHT 2021 SARUM HYDRAULICS LTD.



SARUM HYDRAULICS LTD.

SALISBURY, SP4 6EB, UK  
 www.sarum-hydraulics.co.uk

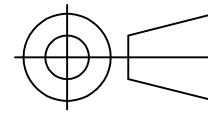
DRAWN	JGF	APP	
		CHKD	
SCALE	F	SIZE	SHEET OF
CAD	2-D	908118309	
DRAWING NO.	908118309		

2	1610261	ADDED I/D NOTCH	10/16
1		FIRST ISSUE	08/16
ISSUE	D.C.N.	CHANGE DESCRIPTION & DATE	DATE IMPLEMENTED

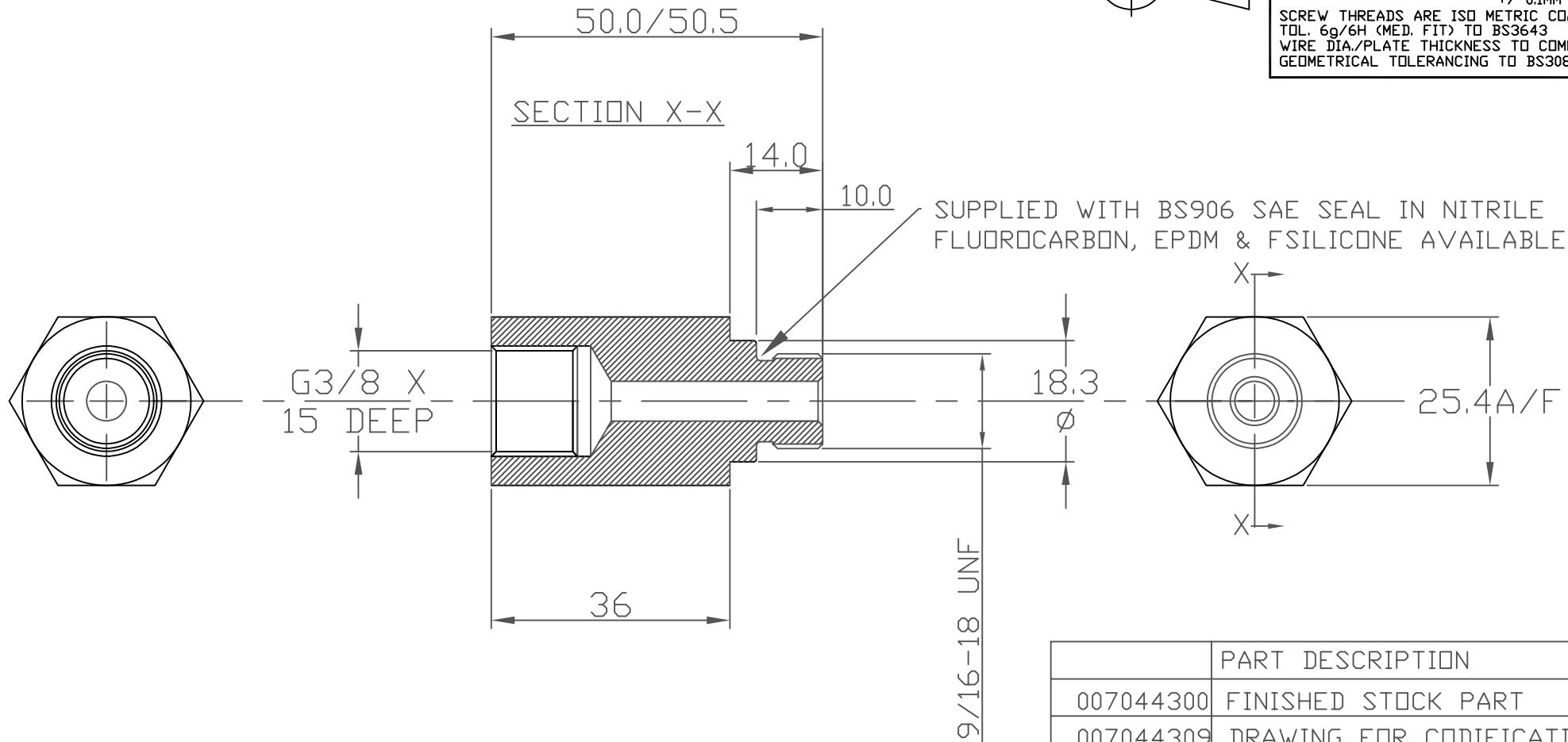
TITLE  
**ADAPTOR 9/16UNF to G1/4 MANO CODIFICATION**  
 MATERIAL STAINLESS STEEL 316 1.4404  
 FINISH CLEAN, DEBURR

IF IN DOUBT, ASK

THIRD ANGLE PROJECTION



TOLERANCES UNLESS OTHERWISE STATED  
 GENERAL TOLERANCES RIGHT ANGLE BENDS &  
 NO DEC. PLACE +/-1.0mm OTHER ANGLES +/-1°  
 ONE DEC. PLACE +/-0.3mm MACHINED DIAMETERS  
 TWO DEC. PLACE +/-0.1mm CONCENTRIC WITHIN  
 +/-0.1mm T.I.R.  
 SCREW THREADS ARE ISO METRIC COARSE PITCH  
 TOL. 6g/6H (MED. FIT) TO BS3643  
 WIRE DIA./PLATE THICKNESS TO COMMERCIAL LIMITS  
 GEOMETRICAL TOLERANCING TO BS308 PART 3



	PART DESCRIPTION
007044300	FINISHED STOCK PART
007044309	DRAWING FOR CODIFICATION
	ORDER ON THE "00" P/N

UNLESS OTHERWISE STATED:  
 DIMENSIONS IN MILLIMETRES  
 SURFACE FINISH IN MICROMETRES  
 REMOVE SHARP EDGES

© COPYRIGHT 2021 SARUM HYDRAULICS LTD.



SARUM HYDRAULICS LTD.

SALISBURY, SP4 6EB, UK  
 www.sarum-hydraulics.co.uk

DRAWN	JGF	APP	
		CHKD	
SCALE	F	SIZE	SHEET OF
CAD 2-D	007044309		
DRAWING NO.			

TITLE  
 OUTLET ADAPTOR 9/16UNF TO 3/8BSP FEMALE 316 CODIFICATION

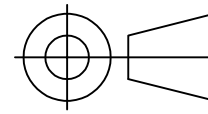
007044309

1		FIRST ISSUE	05/12
ISSUE	D.C.N.	CHANGE DESCRIPTION & DATE	DATE IMPLEMENTED

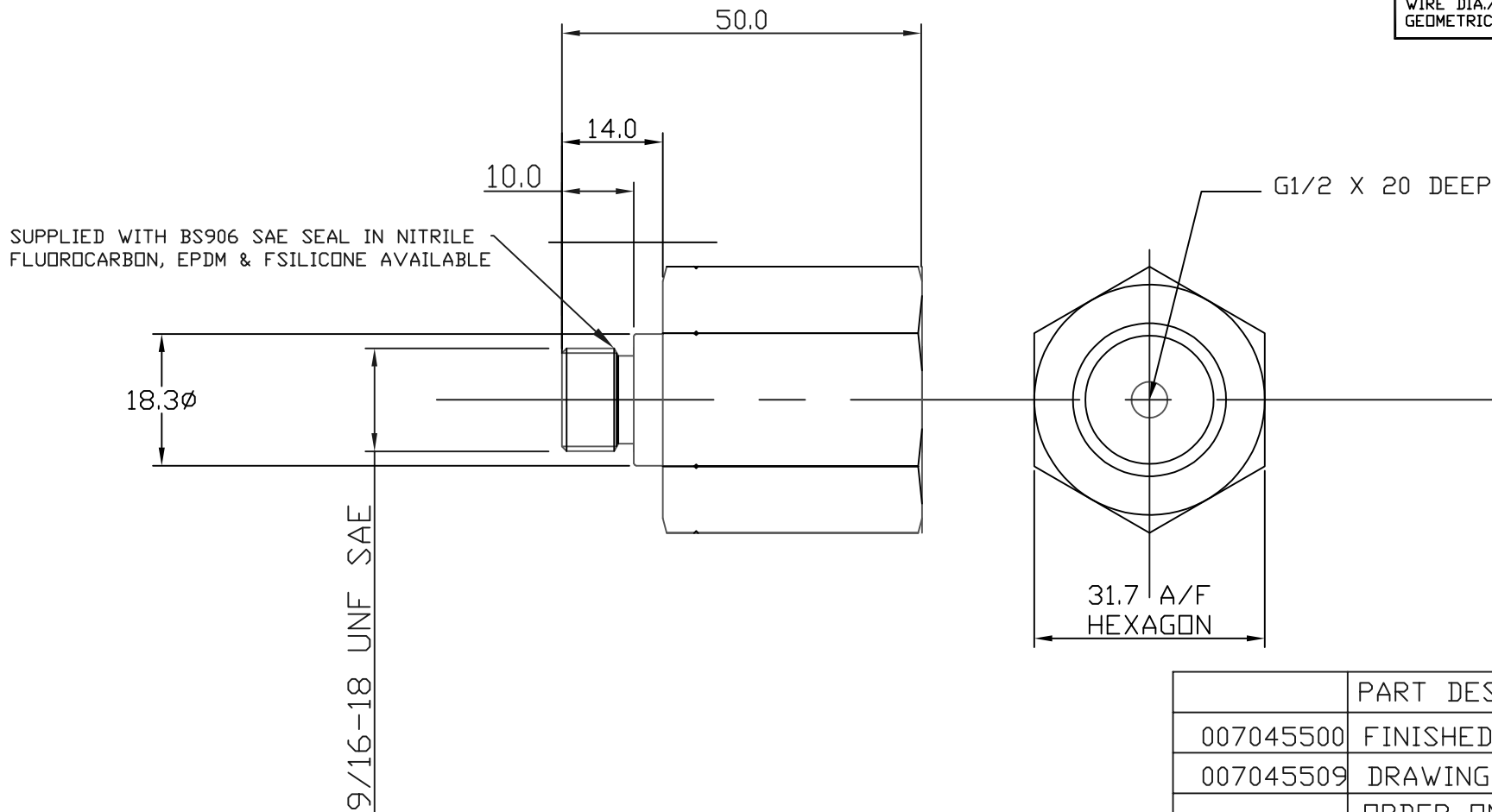
MATERIAL STAINLESS STEEL 316 1.4404  
 FINISH CLEAN, DEBURR

IF IN DOUBT, ASK

THIRD ANGLE PROJECTION



TOLERANCES UNLESS OTHERWISE STATED  
 GENERAL TOLERANCES RIGHT ANGLE BENDS &  
 NO DEC. PLACE +/-1.0mm OTHER ANGLES +/-1°  
 ONE DEC. PLACE +/-0.3mm MACHINED DIAMETERS  
 TWO DEC. PLACE +/-0.1mm CONCENTRIC WITHIN  
 +/-0.1mm T.I.R.  
 SCREW THREADS ARE ISO METRIC COARSE PITCH  
 TOL. 6g/6H (MED. FIT) TO BS3643  
 WIRE DIA./PLATE THICKNESS TO COMMERCIAL LIMITS  
 GEOMETRICAL TOLERANCING TO BS308 PART 3



	PART DESCRIPTION
007045500	FINISHED STOCK PART
007045509	DRAWING FOR CODIFICATION
	ORDER ON THE "00" P/N

UNLESS OTHERWISE STATED:  
 DIMENSIONS IN MILLIMETRES  
 SURFACE FINISH IN MICROMETRES  
 REMOVE SHARP EDGES

© COPYRIGHT 2021 SARUM HYDRAULICS LTD.



SARUM HYDRAULICS LTD.

SALISBURY, SP4 6EB, UK  
 www.sarum-hydraulics.co.uk

DRAWN	JGF	APP	
		CHKD	
SCALE	F	SIZE	SHEET OF
CAD	2-D	007045509	
DRAWING NO.	007045509		

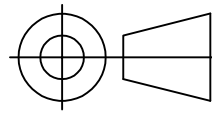
TITLE  
 OUTLET ADAPTOR 9/16UNF TO 1/2BSP FEMALE 316 CODIFICATION

MATERIAL STAINLESS STEEL 316 1.4404

FINISH CLEAN, DEBURR

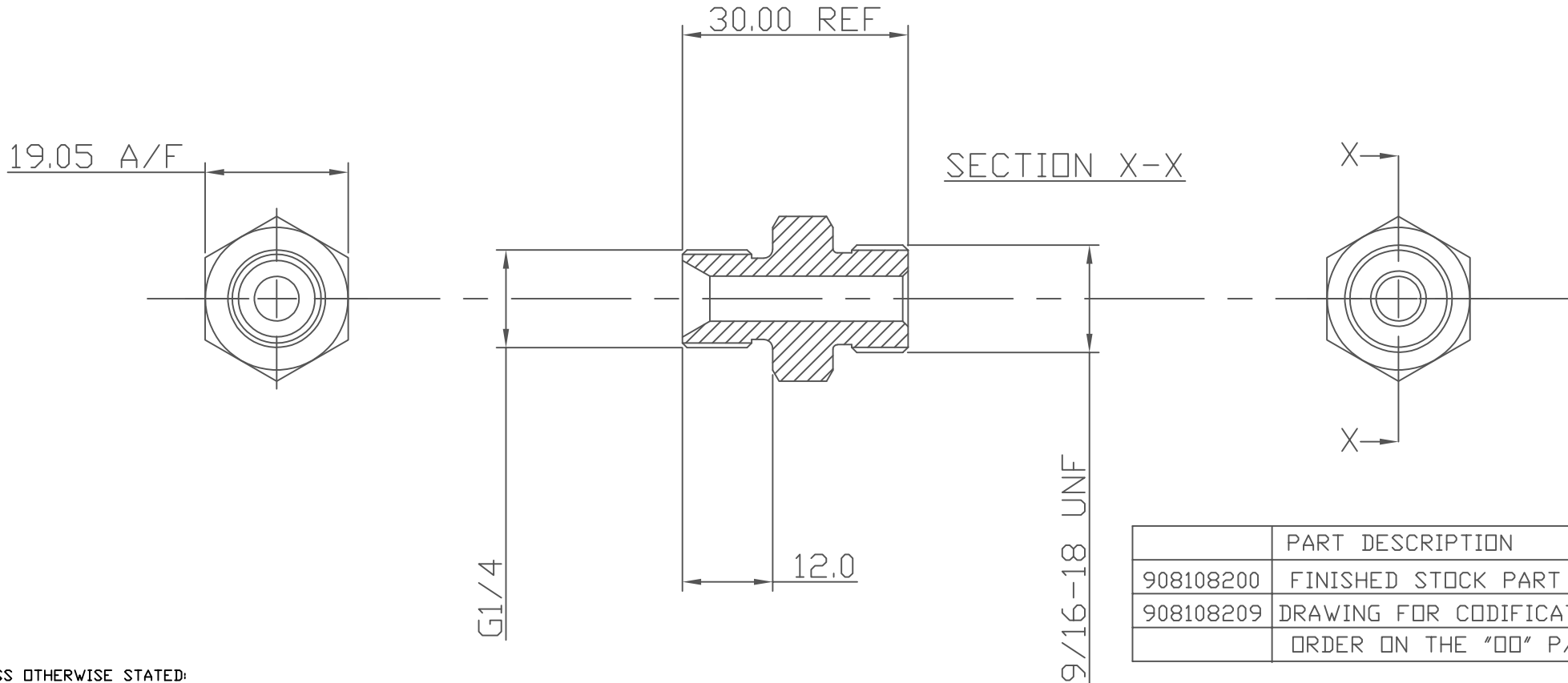
ISSUE	D.C.N.	CHANGE DESCRIPTION & DATE	DATE IMPLEMENTED
1		FIRST ISSUE	08/19

# IF IN DOUBT, ASK THIRD ANGLE PROJECTION



TOLERANCES UNLESS OTHERWISE STATED  
 GENERAL TOLERANCES RIGHT ANGLE BENDS &  
 NO DEC. PLACE +/-1.0mm OTHER ANGLES +/-1°  
 ONE DEC. PLACE +/-0.3mm MACHINED DIAMETERS  
 TWO DEC. PLACE +/-0.1mm CONCENTRIC WITHIN  
 +/-0.1mm T.I.R.  
 SCREW THREADS ARE ISO METRIC COARSE PITCH  
 TOL. 6g/6H (MED. FIT) TO BS3643  
 WIRE DIA./PLATE THICKNESS TO COMMERCIAL LIMITS  
 GEOMETRICAL TOLERANCING TO BS308 PART 3

MEMO 60207573



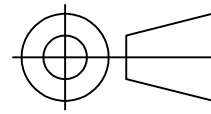
PART DESCRIPTION	
908108200	FINISHED STOCK PART
908108209	DRAWING FOR CODIFICATION
	ORDER ON THE "00" P/N

UNLESS OTHERWISE STATED:  
 DIMENSIONS IN MILLIMETRES  
 SURFACE FINISH IN MICROMETRES  
 REMOVE SHARP EDGES

© COPYRIGHT 2021 SARUM HYDRAULICS LTD.

					SARUM HYDRAULICS LTD. SALISBURY, SP4 6EB, UK www.sarum-hydraulics.co.uk	DRAWN	JGF	APP	
						SCALE	F	SIZE	SHEET OF
						CAD 2-D		908108209	
				TITLE		DRAWING NO.			
				OUTLET ADAPTOR G1/4 MALE CONED 316 CATALOGUE CODIFICATION		<h1>908108209</h1>			
1		FIRST ISSUE	02/08	MATERIAL	STAINLESS STEEL 316 1.4404				
ISSUE	D.C.N.	CHANGE DESCRIPTION & DATE	DATE IMPLEMENTED	FINISH	CLEAN, DEBURR				

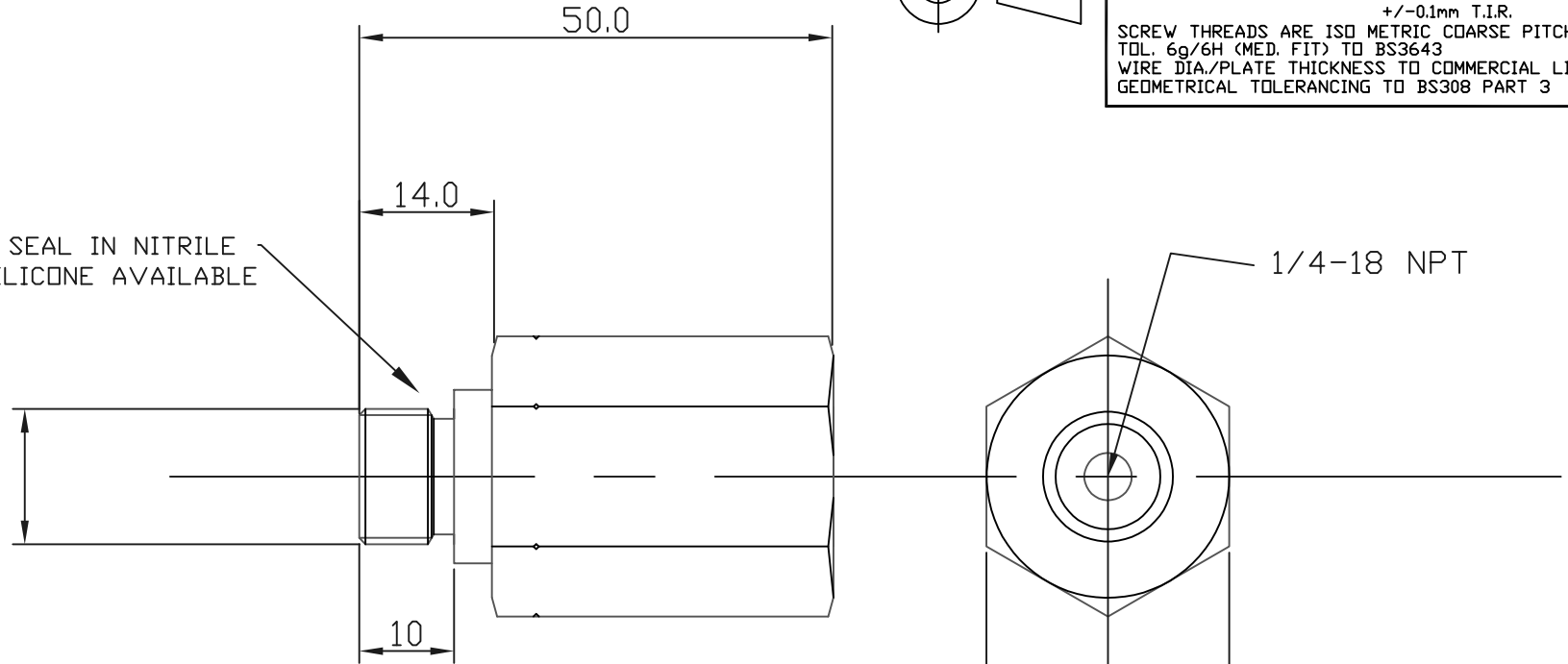
IF IN DOUBT, ASK THIRD ANGLE PROJECTION



TOLERANCES UNLESS OTHERWISE STATED  
 GENERAL TOLERANCES RIGHT ANGLE BENDS &  
 NO DEC. PLACE +/-1.0mm OTHER ANGLES +/-1°  
 ONE DEC. PLACE +/-0.3mm MACHINED DIAMETERS  
 TWO DEC. PLACE +/-0.1mm CONCENTRIC WITHIN  
 +/-0.1mm T.I.R.  
 SCREW THREADS ARE ISO METRIC COARSE PITCH  
 TOL. 6g/6H (MED. FIT) TO BS3643  
 WIRE DIA./PLATE THICKNESS TO COMMERCIAL LIMITS  
 GEOMETRICAL TOLERANCING TO BS308 PART 3

SUPPLIED WITH BS906 SAE SEAL IN NITRILE  
 FLUOROCARBON, EPDM & FSILICONE AVAILABLE

9/16-18 UNF / SAE



25.4 A/F BAR STOCK

	PART DESCRIPTION
007024400	FINISHED STOCK PART
007024409	DRAWING FOR CODIFICATION
	ORDER ON THE "00" P/N

UNLESS OTHERWISE STATED:  
 DIMENSIONS IN MILLIMETRES  
 SURFACE FINISH IN MICROMETRES  
 REMOVE SHARP EDGES

© COPYRIGHT 2021 SARUM HYDRAULICS LTD.



SARUM HYDRAULICS LTD.

SALISBURY, SP4 6EB, UK  
 www.sarum-hydraulics.co.uk

DRAWN	JGF	APP	
		CHKD	
SCALE	F	SIZE	SHEET OF
CAD	2-D	007024409	
DRAWING NO.		007024409	

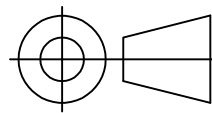
TITLE  
 OUTLET ADAPTOR 9/16UNF TO 1/4NPT 316 CODIFICATION

MATERIAL STAINLESS STEEL 316 1.4404

FINISH CLEAN, DEBURR

ISSUE	D.C.N.	CHANGE DESCRIPTION & DATE	DATE IMPLEMENTED
1		FIRST ISSUE	08/15

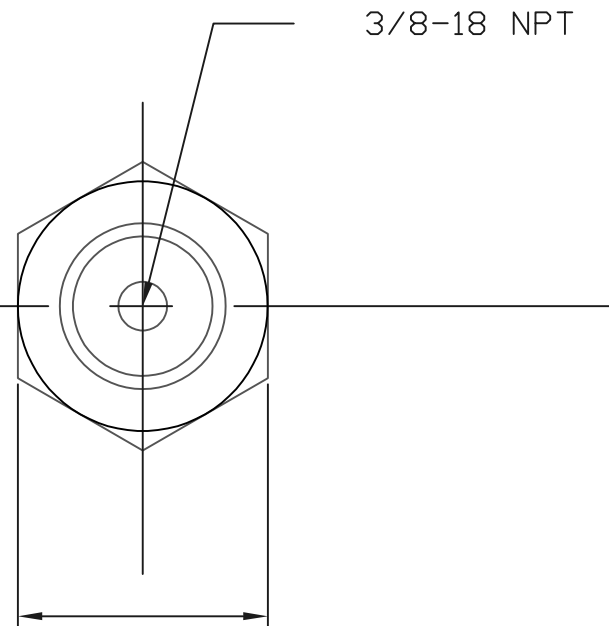
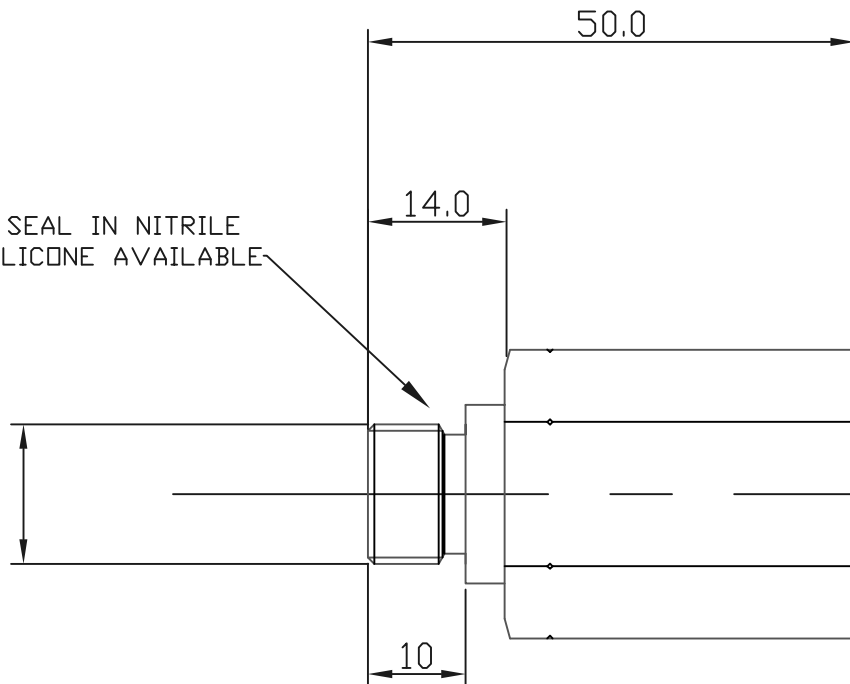
# IF IN DOUBT, ASK THIRD ANGLE PROJECTION



TOLERANCES UNLESS OTHERWISE STATED  
 GENERAL TOLERANCES RIGHT ANGLE BENDS &  
 NO DEC. PLACE +/-1.0mm OTHER ANGLES +/-1°  
 ONE DEC. PLACE +/-0.3mm MACHINED DIAMETERS  
 TWO DEC. PLACE +/-0.1mm CONCENTRIC WITHIN  
 +/-0.1mm T.I.R.  
 SCREW THREADS ARE ISO METRIC COARSE PITCH  
 TOL. 6g/6H (MED. FIT) TO BS3643  
 WIRE DIA./PLATE THICKNESS TO COMMERCIAL LIMITS  
 GEOMETRICAL TOLERANCING TO BS308 PART 3

SUPPLIED WITH BS906 SAE SEAL IN NITRILE  
 FLUOROCARBON, EPDM & FSILICONE AVAILABLE

9/16-18 UNF /SAE



	PART DESCRIPTION
007024500	FINISHED STOCK PART
007024509	DRAWING FOR CODIFICATION
	ORDER ON THE "00" P/N

UNLESS OTHERWISE STATED:  
 DIMENSIONS IN MILLIMETRES  
 SURFACE FINISH IN MICROMETRES  
 REMOVE SHARP EDGES

© COPYRIGHT 2021 SARUM HYDRAULICS LTD.



SARUM HYDRAULICS LTD.

SALISBURY, SP4 6EB, UK  
 www.sarum-hydraulics.co.uk

DRAWN	JGF	APP	
		CHKD	
SCALE	F	SIZE	SHEET OF
CAD	2-D	007024509	
DRAWING NO.		007024509	

TITLE  
**OUTLET ADAPTOR 3/8NPT FEMALE 316 CODIFICATION**

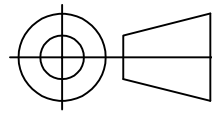
MATERIAL STAINLESS STEEL 316 1.4404

FINISH CLEAN, DEBURR

1		FIRST ISSUE	04/21
ISSUE	D.C.N.	CHANGE DESCRIPTION & DATE	DATE IMPLEMENTED

IF IN DOUBT, ASK

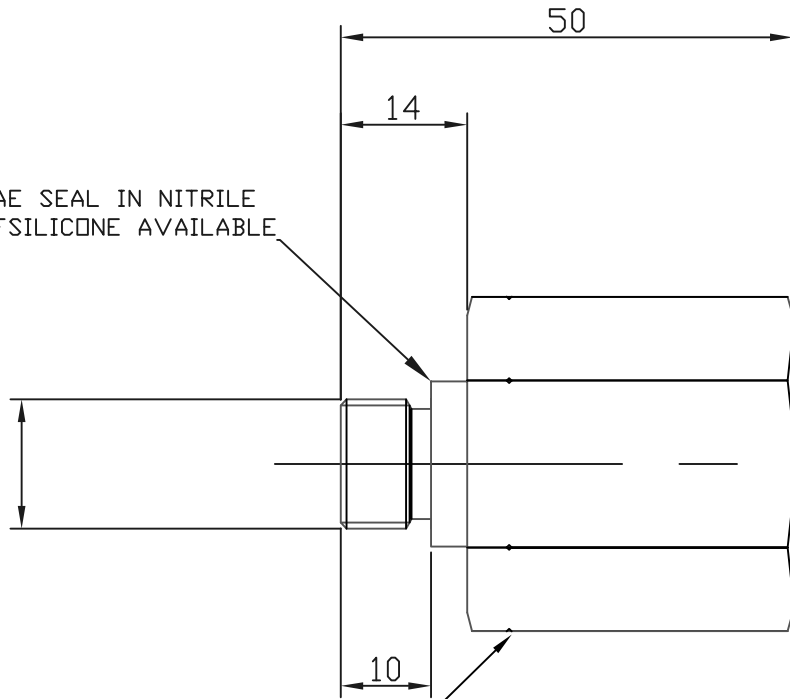
THIRD ANGLE PROJECTION



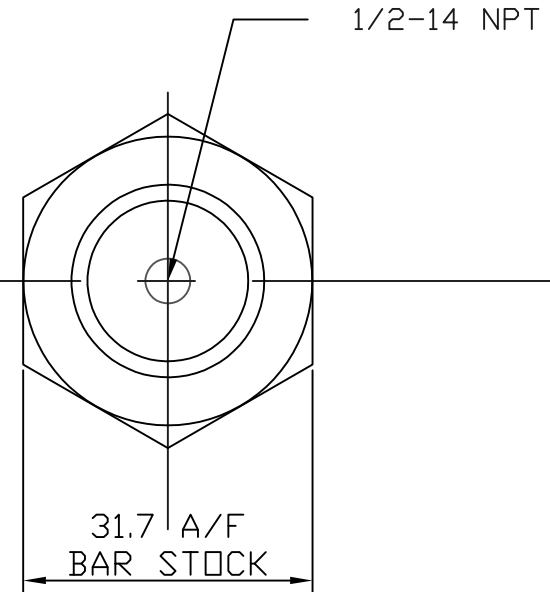
TOLERANCES UNLESS OTHERWISE STATED  
 GENERAL TOLERANCES RIGHT ANGLE BENDS &  
 NO DEC. PLACE +/-1.0mm OTHER ANGLES +/-1°  
 ONE DEC. PLACE +/-0.3mm MACHINED DIAMETERS  
 TWO DEC. PLACE +/-0.1mm CONCENTRIC WITHIN  
 +/-0.1mm T.I.R.  
 SCREW THREADS ARE ISO METRIC COARSE PITCH  
 TOL. 6g/6H (MED. FIT) TO BS3643  
 WIRE DIA./PLATE THICKNESS TO COMMERCIAL LIMITS  
 GEOMETRICAL TOLERANCING TO BS308 PART 3

SUPPLIED WITH BS906 SAE SEAL IN NITRILE  
 FLUOROCARBON, EPDM & FSILICONE AVAILABLE

9/16-18 UNF SAE



NOTCH I/D FOR 316 STAINLESS



PART DESCRIPTION	
007048600	FINISHED STOCK PART
007048609	DRAWING FOR CODIFICATION
	ORDER ON THE "00" P/N

UNLESS OTHERWISE STATED:  
 DIMENSIONS IN MILLIMETRES  
 SURFACE FINISH IN MICROMETRES  
 REMOVE SHARP EDGES

© COPYRIGHT 2021 SARUM HYDRAULICS LTD.



SARUM HYDRAULICS LTD.

SALISBURY, SP4 6EB, UK  
 www.sarum-hydraulics.co.uk

DRAWN	JGF	APP	
		CHKD	
SCALE	F	SIZE	SHEET OF
CAD	2-D	007048609	
DRAWING NO.		007048609	

TITLE  
 OUTLET ADAPTOR 1/2NPT 316 CODIFICATION

MATERIAL STAINLESS STEEL 316 1.4404

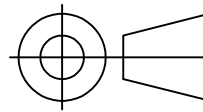
FINISH CLEAN, DEBURR

ISSUE	D.C.N.	CHANGE DESCRIPTION & DATE	DATE IMPLEMENTED
1		FIRST ISSUE	09/08



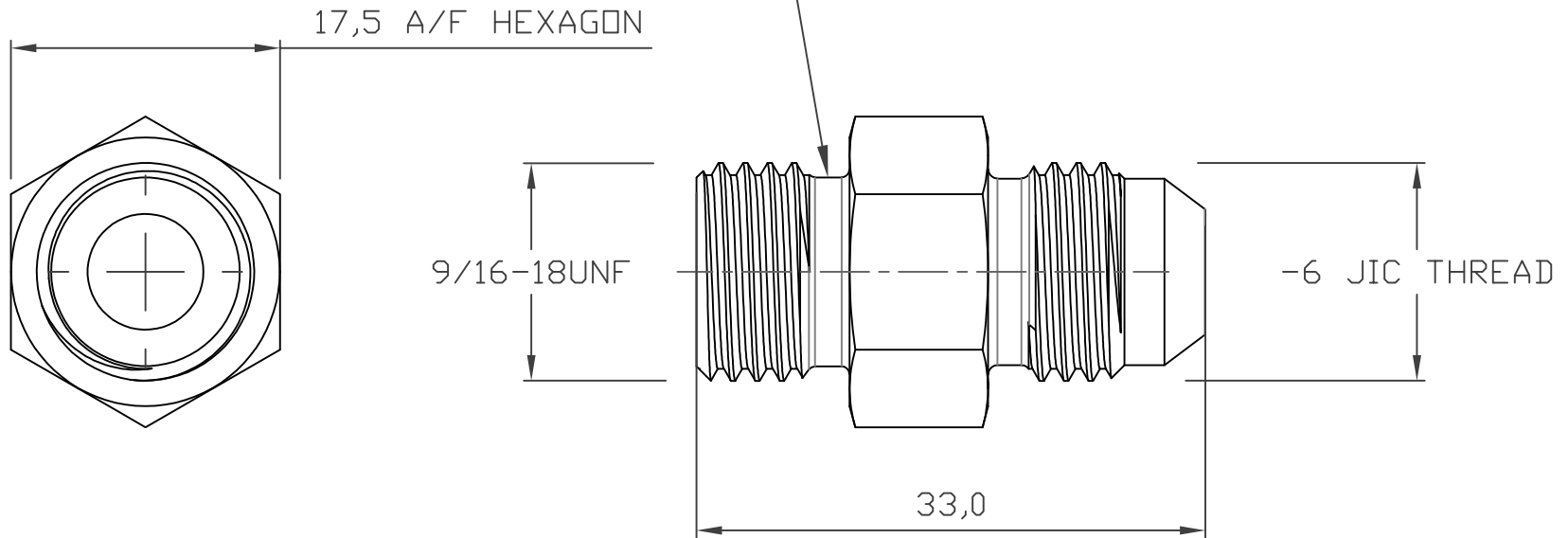
IF IN DOUBT, ASK

THIRD ANGLE PROJECTION



TOLERANCES UNLESS OTHERWISE STATED  
 GENERAL TOLERANCES RIGHT ANGLE BENDS &  
 NO DEC. PLACE +/-1.0mm OTHER ANGLES +/-1°  
 ONE DEC. PLACE +/-0.3mm MACHINED DIAMETERS  
 TWO DEC. PLACE +/-0.1mm CONCENTRIC WITHIN  
 +/-0.1mm T.I.R.  
 SCREW THREADS ARE ISO METRIC COARSE PITCH  
 TOL. 6g/6H (MED. FIT) TO BS3643  
 WIRE DIA./PLATE THICKNESS TO COMMERCIAL LIMITS  
 GEOMETRICAL TOLERANCING TO BS308 PART 3

SUPPLIED WITH BS906 SAE SEAL IN NITRILE  
 FLUOROCARBON, EPDM & FSILICONE AVAILABLE



	PART DESCRIPTION
908123100	FINISHED STOCK PART
908123109	DRAWING FOR CODIFICATION
	ORDER ON THE "00" P/N

UNLESS OTHERWISE STATED:  
 DIMENSIONS IN MILLIMETRES  
 SURFACE FINISH IN MICROMETRES  
 REMOVE SHARP EDGES

© COPYRIGHT 2021 SARUM HYDRAULICS LTD.



SARUM HYDRAULICS LTD.

SALISBURY, SP4 6EB, UK  
 www.sarum-hydraulics.co.uk

DRAWN NO	APP
	CHKD
SCALE F SIZE	SHEET OF
CAD 2-D	908123109
DRAWING NO.	
908123109	

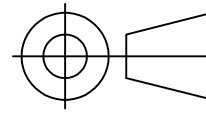
TITLE  
**OUTLET ADAPTOR -6JIC MALE 316 CATALOGUE CODIFICATION**

MATERIAL STAINLESS STEEL 316 1.4404

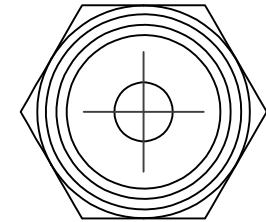
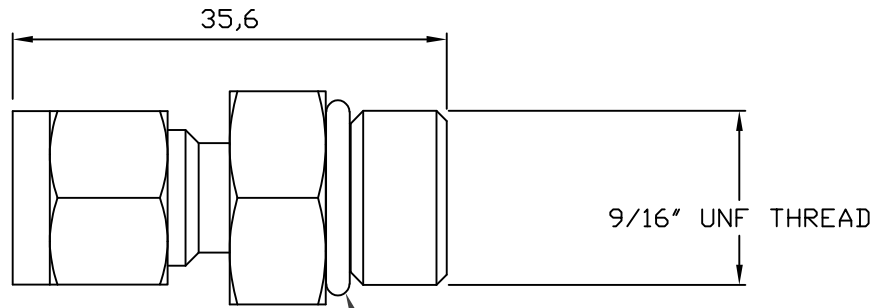
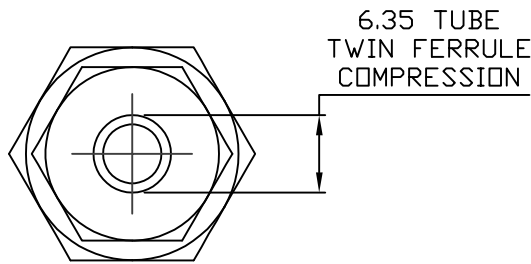
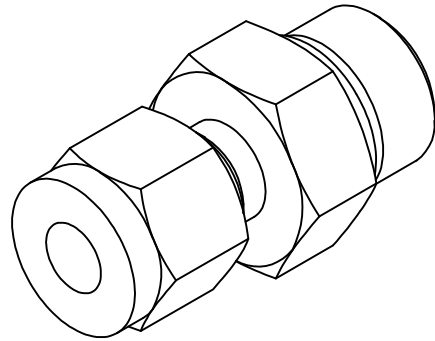
FINISH CLEAN, DEBURR

ISSUE	D.C.N.	CHANGE DESCRIPTION & DATE	DATE IMPLEMENTED
1		FIRST ISSUE	04/21

IF IN DOUBT, ASK THIRD ANGLE PROJECTION



TOLERANCES UNLESS OTHERWISE STATED  
 GENERAL TOLERANCES RIGHT ANGLE BENDS &  
 NO DEC. PLACE +/-1.0mm OTHER ANGLES +/-1°  
 ONE DEC. PLACE +/-0.3mm MACHINED DIAMETERS  
 TWO DEC. PLACE +/-0.1mm CONCENTRIC WITHIN  
 +/-0.1mm T.I.R.  
 SCREW THREADS ARE ISO METRIC COARSE PITCH  
 TOL. 6g/6H (MED. FIT) TO BS3643  
 WIRE DIA./PLATE THICKNESS TO COMMERCIAL LIMITS  
 GEOMETRICAL TOLERANCING TO BS308 PART 3



SUPPLIED WITH BS906 SAE SEAL IN NITRILE  
 FLUOROCARBON, EPDM & FSILICONE AVAILABLE

	PART DESCRIPTION
908124100	FINISHED STOCK PART
908124109	DRAWING FOR CODIFICATION
	ORDER ON THE "00" P/N

UNLESS OTHERWISE STATED:  
 DIMENSIONS IN MILLIMETRES  
 SURFACE FINISH IN MICROMETRES  
 REMOVE SHARP EDGES

© COPYRIGHT 2021 SARUM HYDRAULICS LTD.



SARUM HYDRAULICS LTD.

SALISBURY, SP4 6EB, UK  
 www.sarum-hydraulics.co.uk

DRAWN NO	APP
	CHKD
SCALE F SIZE	SHEET OF
CAD 2-D	908124109
DRAWING NO.	
908124109	

TITLE  
 OUTLET ADAPTOR Ø6.35 TUBE 316 CATALOGUE CODIFICATION

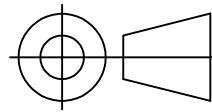
MATERIAL STAINLESS STEEL 316 1.4404

FINISH CLEAN, DEBURR

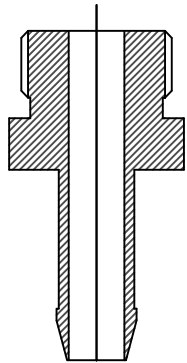
ISSUE	D.C.N.	CHANGE DESCRIPTION & DATE	DATE IMPLEMENTED
1		FIRST ISSUE	04/21

IF IN DOUBT, ASK

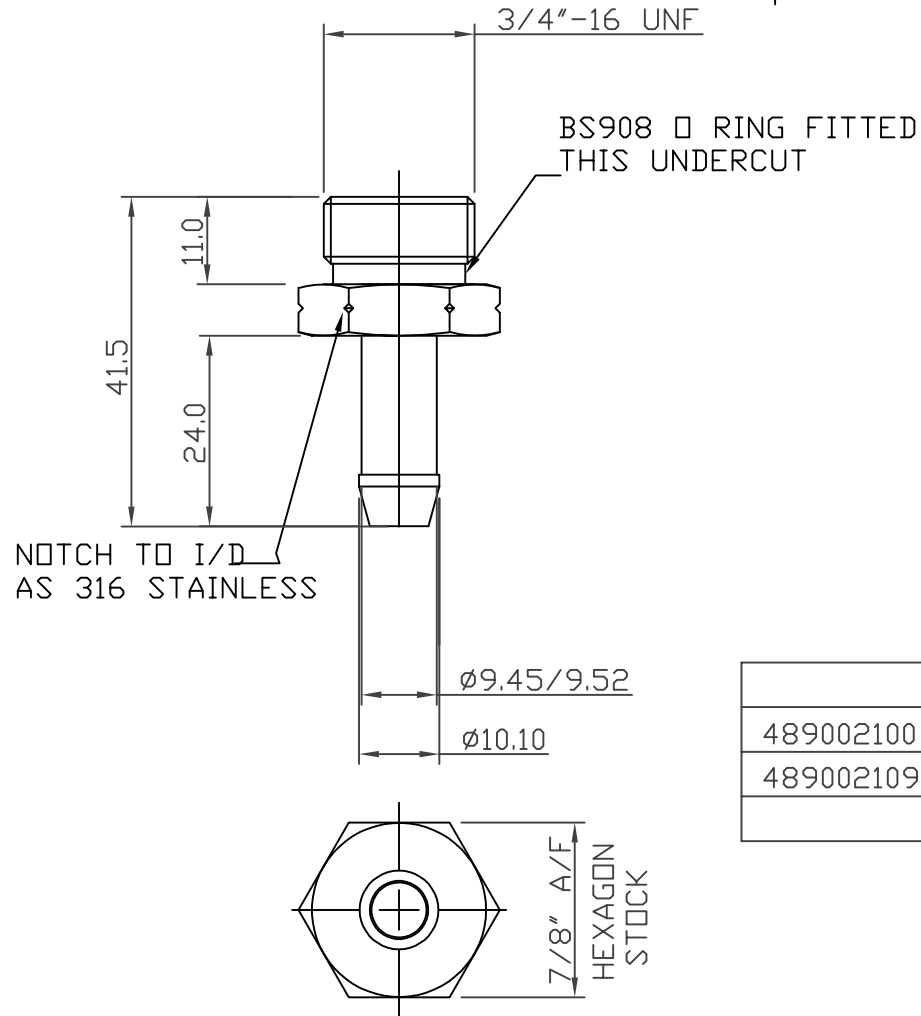
THIRD ANGLE PROJECTION



TOLERANCES UNLESS OTHERWISE STATED  
 GENERAL TOLERANCES RIGHT ANGLE BENDS &  
 NO DEC. PLACE +/-1.0mm OTHER ANGLES +/-1°  
 ONE DEC. PLACE +/-0.3mm MACHINED DIAMETERS  
 TWO DEC. PLACE +/-0.1mm CONCENTRIC WITHIN  
 +/-0.1mm T.I.R.  
 SCREW THREADS ARE ISO METRIC COARSE PITCH  
 TOL. 6g/6H (MED. FIT) TO BS3643  
 WIRE DIA./PLATE THICKNESS TO COMMERCIAL LIMITS  
 GEOMETRICAL TOLERANCING TO BS308 PART 3



SECTION THRO' CENTRELINE



	PART DESCRIPTION
489002100	FINISHED STOCK PART
489002109	DRAWING FOR CODIFICATION
	ORDER ON THE "00" P/N

UNLESS OTHERWISE STATED:  
 DIMENSIONS IN MILLIMETRES  
 SURFACE FINISH IN MICROMETRES  
 REMOVE SHARP EDGES

© COPYRIGHT 2021 SARUM HYDRAULICS LTD.



SARUM HYDRAULICS LTD.

SALISBURY, SP4 6EB, UK  
 www.sarum-hydraulics.co.uk

DRAWN NO	APP
	CHKD
SCALE F SIZE	SHEET OF
CAD 2-D	489002109
DRAWING NO.	
489002109	

TITLE  
**INLET HOSE CONNECTOR CATALOGUE CODIFICATION**

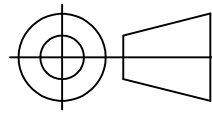
MATERIAL STAINLESS STEEL 316 1.4404

FINISH CLEAN, DEBURR

ISSUE	D.C.N.	CHANGE DESCRIPTION & DATE	DATE IMPLEMENTED
1		FIRST ISSUE	04/21

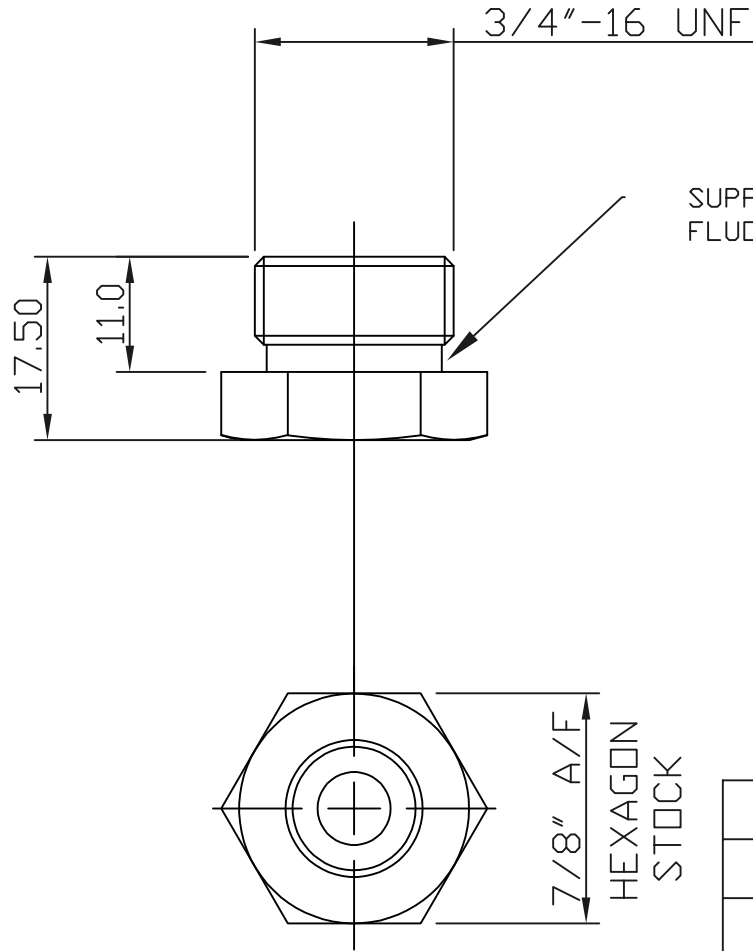
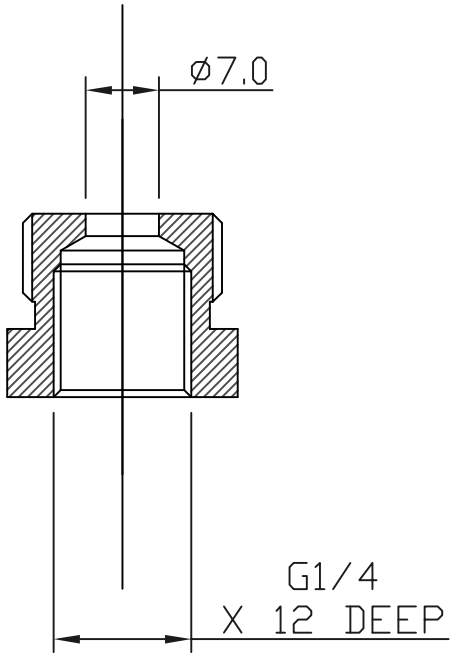
IF IN DOUBT, ASK

THIRD ANGLE PROJECTION



TOLERANCES UNLESS OTHERWISE STATED  
 GENERAL TOLERANCES RIGHT ANGLE BENDS &  
 NO DEC. PLACE +/-1.0mm OTHER ANGLES +/-1°  
 ONE DEC. PLACE +/-0.3mm MACHINED DIAMETERS  
 TWO DEC. PLACE +/-0.1mm CONCENTRIC WITHIN  
 +/-0.1mm T.I.R.  
 SCREW THREADS ARE ISO METRIC COARSE PITCH  
 TOL. 6g/6H (MED. FIT) TO BS3643  
 WIRE DIA./PLATE THICKNESS TO COMMERCIAL LIMITS  
 GEOMETRICAL TOLERANCING TO BS308 PART 3

SECTION THRO'  
CENTRELINE



SUPPLIED WITH BS908 SAE SEAL IN NITRILE  
 FLUOROCARBON, EPDM & FSILICONE AVAILABLE

	PART DESCRIPTION
489001800	FINISHED STOCK PART
489001809	DRAWING FOR CODIFICATION
	ORDER ON THE "00" P/N

UNLESS OTHERWISE STATED:  
 DIMENSIONS IN MILLIMETRES  
 SURFACE FINISH IN MICROMETRES  
 REMOVE SHARP EDGES

© COPYRIGHT 2021 SARUM HYDRAULICS LTD.



SARUM HYDRAULICS LTD.

SALISBURY, SP4 6EB, UK  
 www.sarum-hydraulics.co.uk

TITLE  
**INLET ADAPTOR G1/4 316 CATALOGUE CODIFICATION**

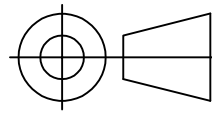
MATERIAL STAINLESS STEEL 316 1.4404

FINISH CLEAN, DEBURR

DRAWN NO	APP
	CHKD
SCALE F SIZE	SHEET OF
CAD 2-D	489001809
DRAWING NO.	
<b>489001809</b>	

ISSUE	D.C.N.	CHANGE DESCRIPTION & DATE	DATE IMPLEMENTED
1		FIRST ISSUE	04/21

# IF IN DOUBT, ASK THIRD ANGLE PROJECTION



TOLERANCES UNLESS OTHERWISE STATED  
 GENERAL TOLERANCES RIGHT ANGLE BENDS &  
 NO DEC. PLACE +/-1.0mm OTHER ANGLES +/-1°  
 ONE DEC. PLACE +/-0.3mm MACHINED DIAMETERS  
 TWO DEC. PLACE +/-0.1mm CONCENTRIC WITHIN  
 +/-0.1mm T.I.R.  
 SCREW THREADS ARE ISO METRIC COARSE PITCH  
 TOL. 6g/6H (MED. FIT) TO BS3643  
 WIRE DIA./PLATE THICKNESS TO COMMERCIAL LIMITS  
 GEOMETRICAL TOLERANCING TO BS308 PART 3

SECTION XX

SUPPLIED WITH BS908 SAE SEAL IN NITRILE  
 FLUOROCARBON, EPDM & FSILICONE AVAILABLE

51.0  
 NOTCH TO I/D  
 AS 316 STAINLESS

25.4 A/F  
 HEX  
 STOCK

22.0  $\phi$   
 DRILL 15.25 DIA X 20 DP FULL DIA  
 TAP G3/8 X 16 DEEP

3/4-16UNF2B  
 TO GAUGE

7.0  $\phi$

0.8

11.0/11.1

	PART DESCRIPTION
489001700	FINISHED STOCK PART
489001709	DRAWING FOR CODIFICATION
	ORDER ON THE "00" P/N

UNLESS OTHERWISE STATED:  
 DIMENSIONS IN MILLIMETRES  
 SURFACE FINISH IN MICROMETRES  
 REMOVE SHARP EDGES

© COPYRIGHT 2021 SARUM HYDRAULICS LTD.



SARUM HYDRAULICS LTD.

SALISBURY, SP4 6EB, UK  
 www.sarum-hydraulics.co.uk

TITLE  
**INLET ADAPTOR G3/8 316 CATALOGUE CODIFICATION**

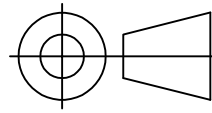
MATERIAL STAINLESS STEEL 316 1.4404

FINISH CLEAN, DEBURR

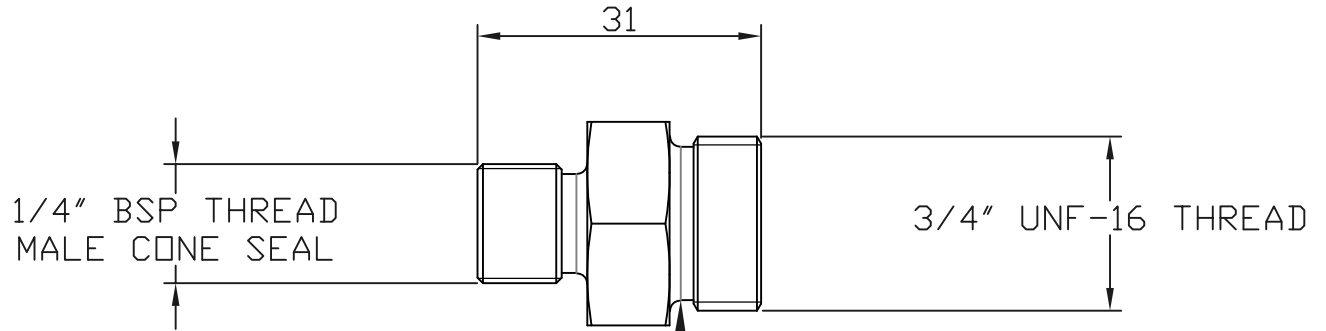
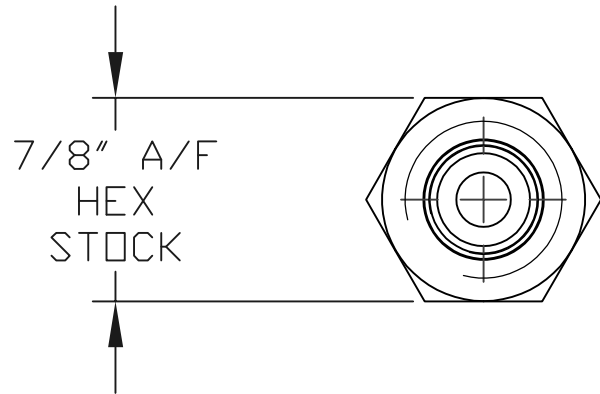
DRAWN NO	APP
	CHKD
SCALE F SIZE	SHEET OF
CAD 2-D	489001709
DRAWING NO.	
<b>489001709</b>	

1	FIRST ISSUE	04/21
ISSUE	D.C.N.	CHANGE DESCRIPTION & DATE
		DATE IMPLEMENTED

IF IN DOUBT, ASK THIRD ANGLE PROJECTION



TOLERANCES UNLESS OTHERWISE STATED  
 GENERAL TOLERANCES NO DEC. PLACE  $\pm 1.0\text{mm}$  RIGHT ANGLE BENDS &  
 ONE DEC. PLACE  $\pm 0.3\text{mm}$  OTHER ANGLES  $\pm 1^\circ$   
 TWO DEC. PLACE  $\pm 0.1\text{mm}$  MACHINED DIAMETERS  
 CONCENTRIC WITHIN  $\pm 0.1\text{mm}$  T.I.R.  
 SCREW THREADS ARE ISO METRIC COARSE PITCH  
 TOL. 6g/6H (MED. FIT) TO BS3643  
 WIRE DIA./PLATE THICKNESS TO COMMERCIAL LIMITS  
 GEOMETRICAL TOLERANCING TO BS308 PART 3



SUPPLIED WITH BS908 SAE SEAL IN NITRILE  
 FLUOROCARBON, EPDM & FSILICONE AVAILABLE

	PART DESCRIPTION
489001900	FINISHED STOCK PART
489001909	DRAWING FOR CODIFICATION
	ORDER ON THE "00" P/N

UNLESS OTHERWISE STATED:  
 DIMENSIONS IN MILLIMETRES  
 SURFACE FINISH IN MICROMETRES  
 REMOVE SHARP EDGES

© COPYRIGHT 2021 SARUM HYDRAULICS LTD.



SARUM HYDRAULICS LTD.

SALISBURY, SP4 6EB, UK  
 www.sarum-hydraulics.co.uk

DRAWN NO	APP
	CHKD
SCALE F SIZE	SHEET OF
CAD 2-D	489001909
DRAWING NO.	
489001909	

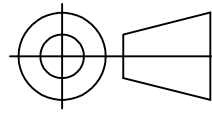
TITLE  
 INLET ADAPTOR G1/4 MALE CONED 316 CATALOGUE CODIFICATION

MATERIAL STAINLESS STEEL 316 1.4404

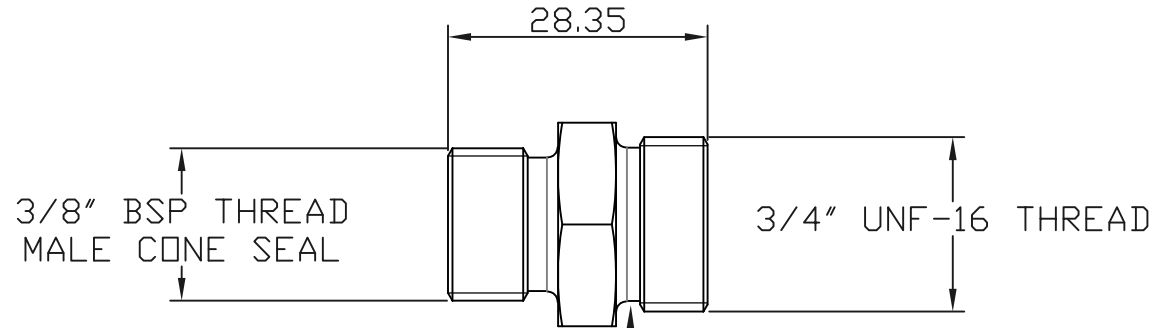
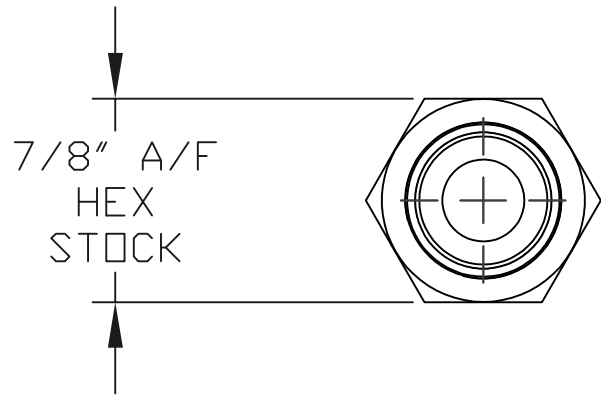
FINISH CLEAN, DEBURR

ISSUE	D.C.N.	CHANGE DESCRIPTION & DATE	DATE IMPLEMENTED
1		FIRST ISSUE	04/21

IF IN DOUBT, ASK THIRD ANGLE PROJECTION



TOLERANCES UNLESS OTHERWISE STATED  
 GENERAL TOLERANCES RIGHT ANGLE BENDS &  
 NO DEC. PLACE +/-1.0mm OTHER ANGLES +/-1°  
 ONE DEC. PLACE +/-0.3mm MACHINED DIAMETERS  
 TWO DEC. PLACE +/-0.1mm CONCENTRIC WITHIN  
 +/-0.1mm T.I.R.  
 SCREW THREADS ARE ISO METRIC COARSE PITCH  
 TOL. 6g/6H (MED. FIT) TO BS3643  
 WIRE DIA./PLATE THICKNESS TO COMMERCIAL LIMITS  
 GEOMETRICAL TOLERANCING TO BS308 PART 3



SUPPLIED WITH BS908 SAE SEAL IN NITRILE  
 FLUOROCARBON, EPDM & FSILICONE AVAILABLE

	PART DESCRIPTION
489002000	FINISHED STOCK PART
489002009	DRAWING FOR CODIFICATION
	ORDER ON THE "00" P/N

UNLESS OTHERWISE STATED:  
 DIMENSIONS IN MILLIMETRES  
 SURFACE FINISH IN MICROMETRES  
 REMOVE SHARP EDGES

© COPYRIGHT 2021 SARUM HYDRAULICS LTD.



SARUM HYDRAULICS LTD.

SALISBURY, SP4 6EB, UK  
 www.sarum-hydraulics.co.uk

DRAWN NO	APP
	CHKD
SCALE F SIZE	SHEET OF
CAD 2-D	489002009
DRAWING NO.	
489002009	

TITLE  
 INLET ADAPTOR G3/8 MALE CONED 316 CATALOGUE CODIFICATION

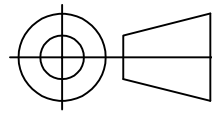
MATERIAL STAINLESS STEEL 316 1.4404

FINISH CLEAN, DEBURR

ISSUE	D.C.N.	CHANGE DESCRIPTION & DATE	DATE IMPLEMENTED
1		FIRST ISSUE	04/21

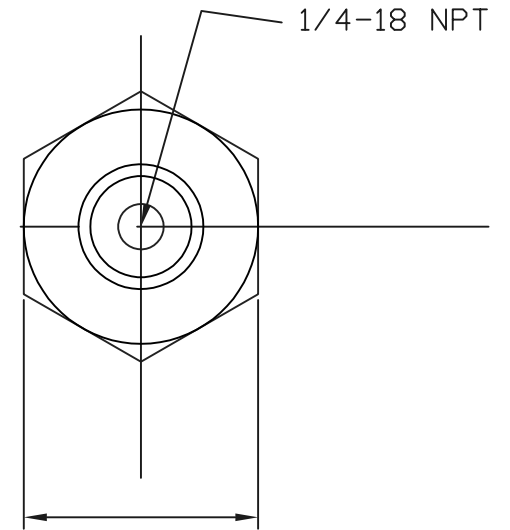
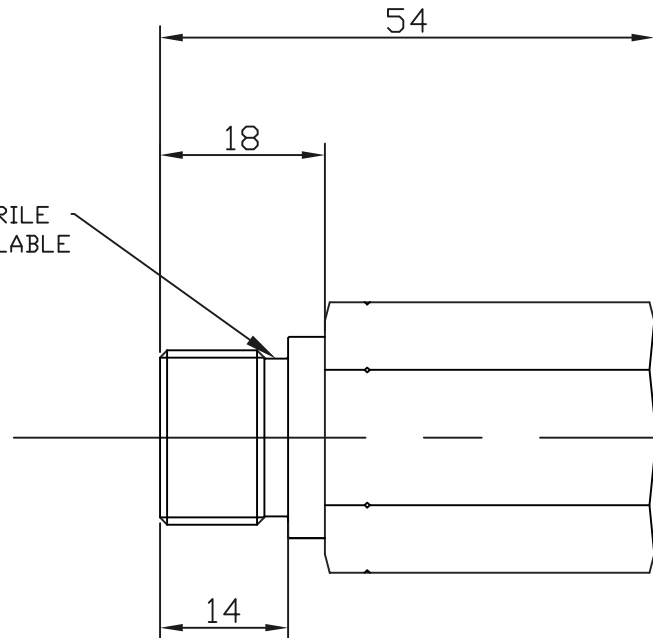
IF IN DOUBT, ASK

THIRD ANGLE PROJECTION



TOLERANCES UNLESS OTHERWISE STATED  
 GENERAL TOLERANCES NO DEC. PLACE +/-1.0mm ONE DEC. PLACE +/-0.3mm TWO DEC. PLACE +/-0.1mm  
 RIGHT ANGLE BENDS & OTHER ANGLES +/-1° MACHINED DIAMETERS CONCENTRIC WITHIN +/-0.1mm T.I.R.  
 SCREW THREADS ARE ISO METRIC COARSE PITCH TOL. 6g/6H (MED. FIT) TO BS3643  
 WIRE DIA./PLATE THICKNESS TO COMMERCIAL LIMITS GEOMETRICAL TOLERANCING TO BS308 PART 3

SUPPLIED WITH BS906 SAE SEAL IN NITRILE FLUOROCARBON, EPDM & FSILICONE AVAILABLE



25.4 A/F BAR STOCK

	PART DESCRIPTION
007024200	FINISHED STOCK PART
007024209	DRAWING FOR CODIFICATION
	ORDER ON THE "00" P/N

UNLESS OTHERWISE STATED:  
 DIMENSIONS IN MILLIMETRES  
 SURFACE FINISH IN MICROMETRES  
 REMOVE SHARP EDGES

© COPYRIGHT 2021 SARUM HYDRAULICS LTD.



SARUM HYDRAULICS LTD.

SALISBURY, SP4 6EB, UK  
 www.sarum-hydraulics.co.uk

DRAWN	JGF	APP	
		CHKD	
SCALE	F	SIZE	SHEET OF
CAD 2-D	007024209		

TITLE  
 INLET ADAPTOR 3/4UNF TO 1/4NPT 316 CODIFICATION

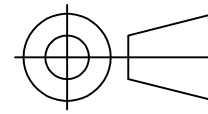
DRAWING NO.  
 007024209

1		FIRST ISSUE	08/15
ISSUE	D.C.N.	CHANGE DESCRIPTION & DATE	DATE IMPLEMENTED

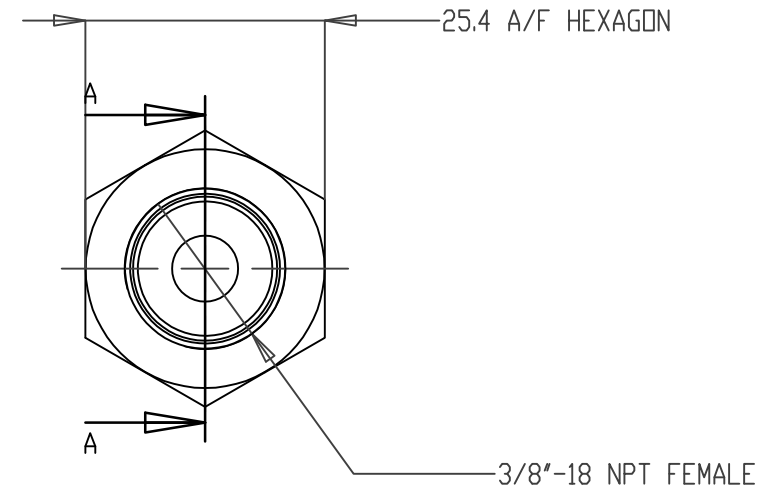
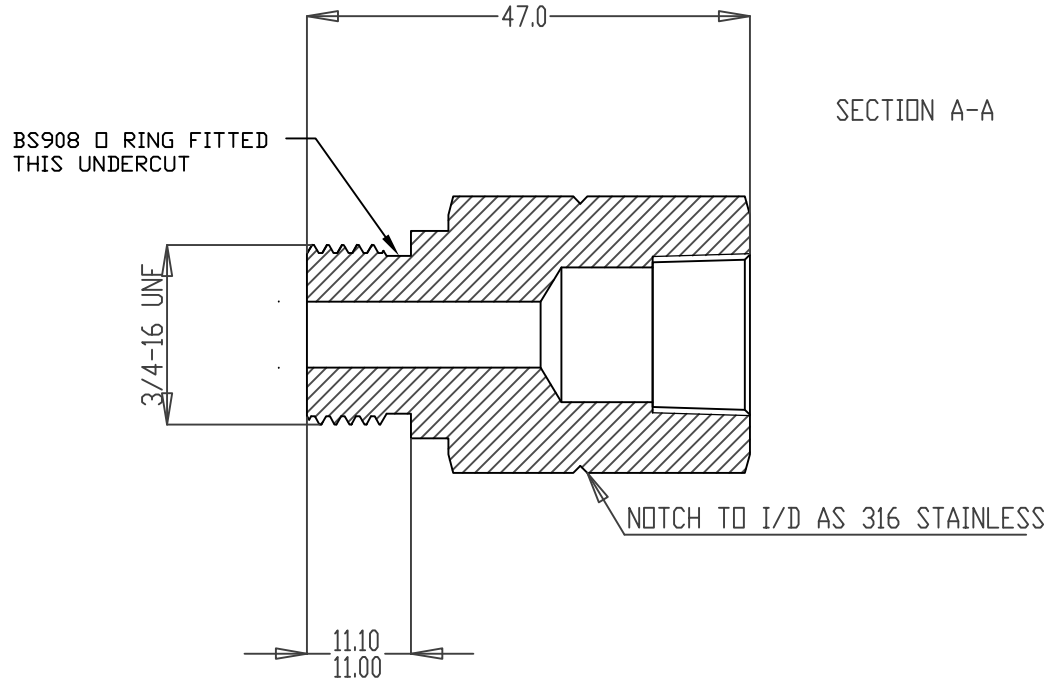
MATERIAL STAINLESS STEEL 316 1.4404  
 FINISH CLEAN, DEBURR



# IF IN DOUBT, ASK THIRD ANGLE PROJECTION



TOLERANCES UNLESS OTHERWISE STATED  
 GENERAL TOLERANCES RIGHT ANGLE BENDS &  
 NO DEC. PLACE +/-1.0mm OTHER ANGLES +/-1°  
 ONE DEC. PLACE +/-0.3mm MACHINED DIAMETERS  
 TWO DEC. PLACE +/-0.1mm CONCENTRIC WITHIN  
 +/-0.1mm T.I.R.  
 SCREW THREADS ARE ISO METRIC COARSE PITCH  
 TOL. 6g/6H (MED. FIT) TO BS3643  
 WIRE DIA./PLATE THICKNESS TO COMMERCIAL LIMITS  
 GEOMETRICAL TOLERANCING TO BS308 PART 3



- NOTES  
 1. MATERIAL-STAINLESS STEEL 1.4404/316L  
 2. FINISH- CLEAN, PROTECT FROM DAMAGE

UNLESS OTHERWISE STATED:  
 DIMENSIONS IN MILLIMETRES  
 SURFACE FINISH IN MICROMETRES  
 REMOVE SHARP EDGES

	PART DESCRIPTION
489001600	FINISHED STOCK PART
489001609	DRAWING FOR CODIFICATION
	ORDER ON THE "00" P/N

© COPYRIGHT 2021 SARUM HYDRAULICS LTD.



SARUM HYDRAULICS LTD.

SALISBURY, SP4 6EB, UK  
 www.sarum-hydraulics.co.uk

TITLE  
**ADAPTOR, INLET 3/8NPT FEMALE 316 CATALOGUE CODIFICATION**

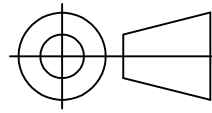
MATERIAL STAINLESS STEEL 316 1.4404

FINISH CLEAN, DEBURR

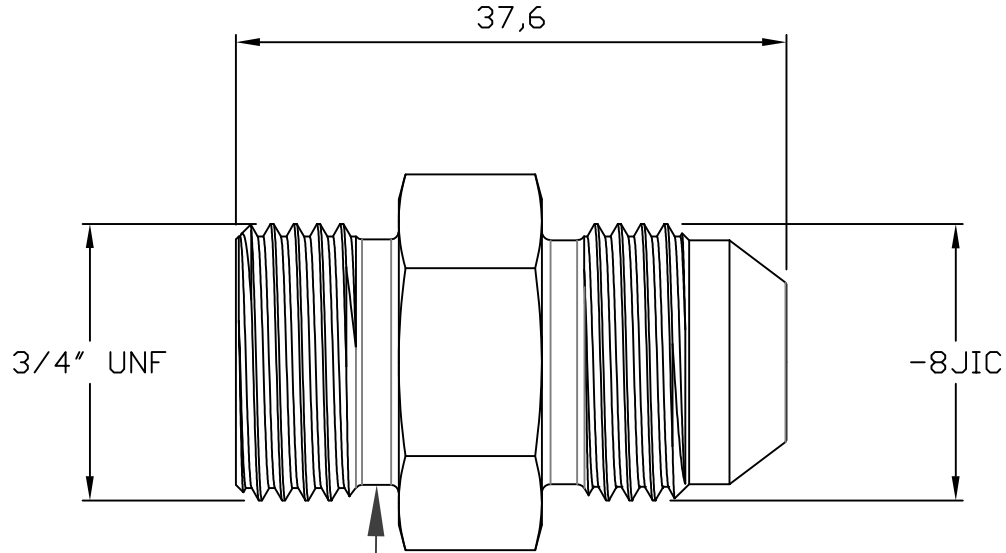
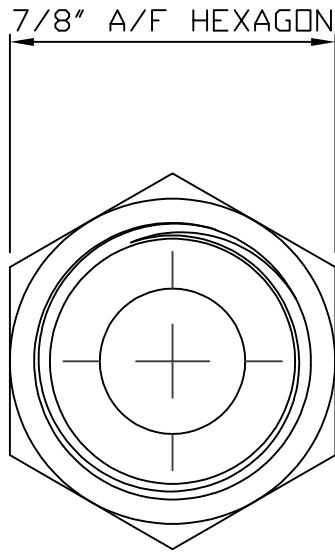
DRAWN NO	APP
	CHKD
SCALE F SIZE	SHEET OF
CAD 2-D	489001609
DRAWING NO.	
<b>489001609</b>	

ISSUE	D.C.N.	CHANGE DESCRIPTION & DATE	DATE IMPLEMENTED
1		FIRST ISSUE	04/21

IF IN DOUBT, ASK THIRD ANGLE PROJECTION



TOLERANCES UNLESS OTHERWISE STATED  
 GENERAL TOLERANCES RIGHT ANGLE BENDS &  
 NO DEC. PLACE +/-1.0mm OTHER ANGLES +/-1°  
 ONE DEC. PLACE +/-0.3mm MACHINED DIAMETERS  
 TWO DEC. PLACE +/-0.1mm CONCENTRIC WITHIN  
 +/-0.1mm T.I.R.  
 SCREW THREADS ARE ISO METRIC COARSE PITCH  
 TOL. 6g/6H (MED. FIT) TO BS3643  
 WIRE DIA./PLATE THICKNESS TO COMMERCIAL LIMITS  
 GEOMETRICAL TOLERANCING TO BS308 PART 3



SUPPLIED WITH BS908 SAE SEAL IN NITRILE  
 FLUOROCARBON, EPDM & FSILICONE AVAILABLE

	PART DESCRIPTION
489002400	FINISHED STOCK PART
489002409	DRAWING FOR CODIFICATION
	ORDER ON THE "00" P/N

UNLESS OTHERWISE STATED:  
 DIMENSIONS IN MILLIMETRES  
 SURFACE FINISH IN MICROMETRES  
 REMOVE SHARP EDGES

© COPYRIGHT 2021 SARUM HYDRAULICS LTD.



SARUM HYDRAULICS LTD.

SALISBURY, SP4 6EB, UK  
 www.sarum-hydraulics.co.uk

DRAWN NO	APP
	CHKD
SCALE F SIZE	SHEET OF
CAD 2-D	489002409
DRAWING NO.	
489002409	

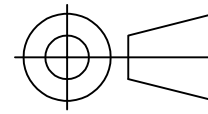
TITLE  
**INLET ADAPTOR -8JIC 316 CATALOGUE CODIFICATION**

MATERIAL STAINLESS STEEL 316 1.4404

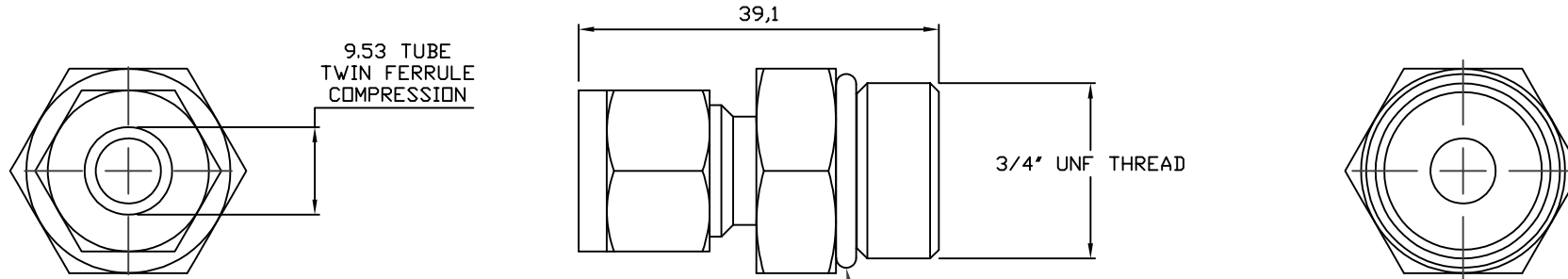
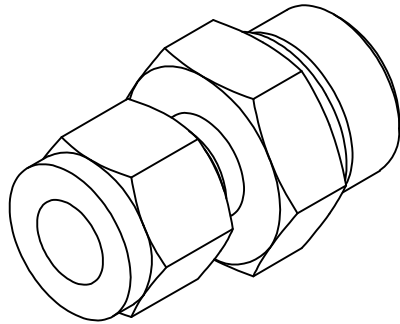
FINISH CLEAN, DEBURR

1	FIRST ISSUE	04/21
ISSUE	D.C.N. CHANGE DESCRIPTION & DATE	DATE IMPLEMENTED

IF IN DOUBT, ASK THIRD ANGLE PROJECTION



TOLERANCES UNLESS OTHERWISE STATED  
 GENERAL TOLERANCES RIGHT ANGLE BENDS &  
 NO DEC. PLACE +/-1.0mm OTHER ANGLES +/-1°  
 ONE DEC. PLACE +/-0.3mm MACHINED DIAMETERS  
 TWO DEC. PLACE +/-0.1mm CONCENTRIC WITHIN  
 +/-0.1mm T.I.R.  
 SCREW THREADS ARE ISO METRIC COARSE PITCH  
 TOL. 6g/6H (MED. FIT) TO BS3643  
 WIRE DIA./PLATE THICKNESS TO COMMERCIAL LIMITS  
 GEOMETRICAL TOLERANCING TO BS308 PART 3



	PART DESCRIPTION
908169300	FINISHED STOCK PART
908169309	DRAWING FOR CODIFICATION
	ORDER ON THE "00" P/N

SUPPLIED WITH BS908 SAE SEAL IN NITRILE  
 FLUOROCARBON, EPDM & FSILICONE AVAILABLE

UNLESS OTHERWISE STATED:  
 DIMENSIONS IN MILLIMETRES  
 SURFACE FINISH IN MICROMETRES  
 REMOVE SHARP EDGES

© COPYRIGHT 2021 SARUM HYDRAULICS LTD.



SARUM HYDRAULICS LTD.

SALISBURY, SP4 6EB, UK  
 www.sarum-hydraulics.co.uk

DRAWN NO	APP
	CHKD
SCALE F SIZE	SHEET OF
CAD 2-D	908169309
DRAWING NO.	
908169309	

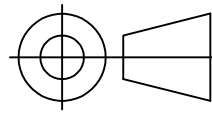
TITLE  
 INLET ADAPTOR Ø9.52 TUBE 316 CATALOGUE CODIFICATION

MATERIAL STAINLESS STEEL 316 1.4404

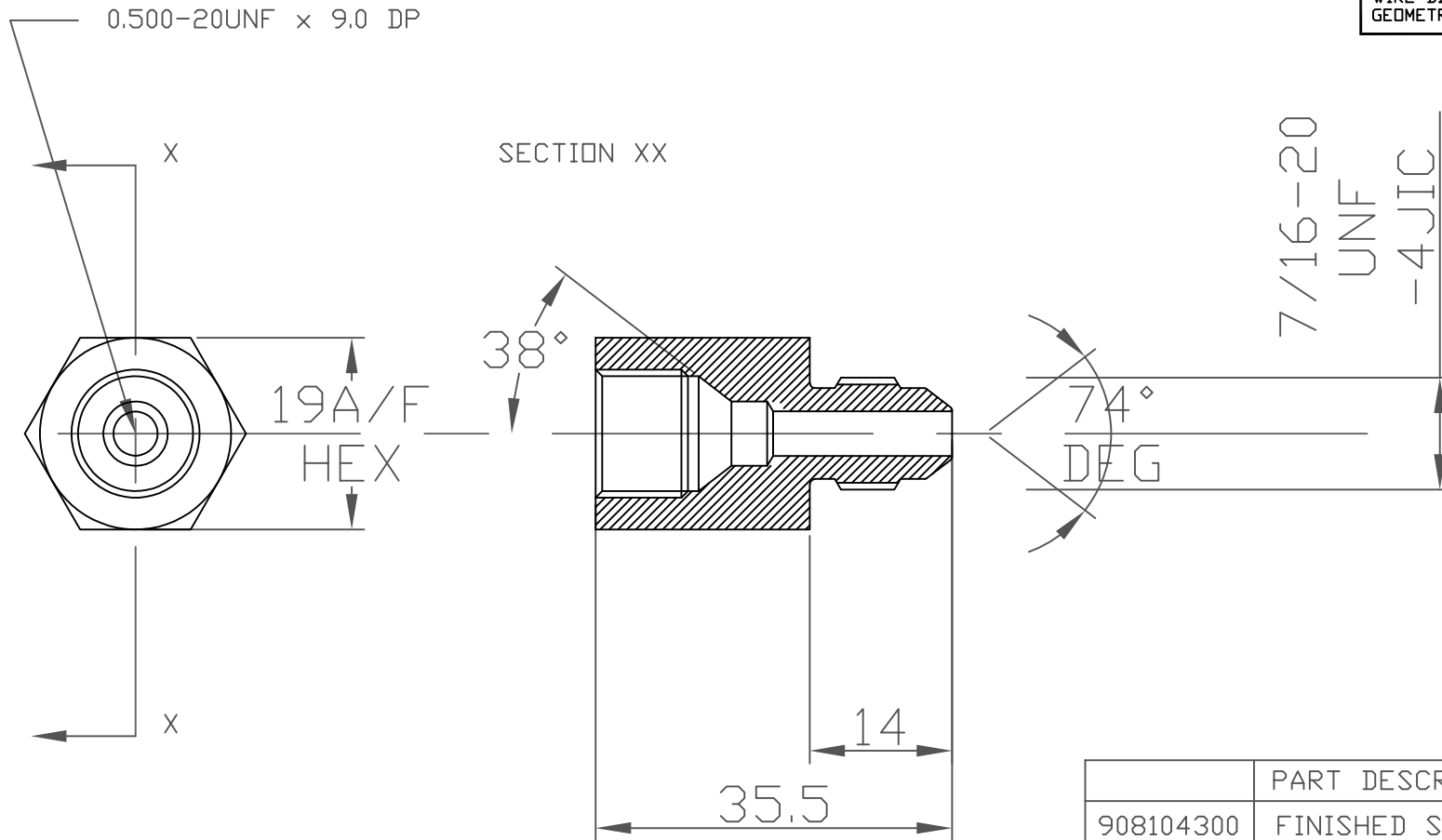
FINISH CLEAN, DEBURR

ISSUE	D.C.N.	CHANGE DESCRIPTION & DATE	DATE IMPLEMENTED
1		FIRST ISSUE	04/21

IF IN DOUBT, ASK THIRD ANGLE PROJECTION



TOLERANCES UNLESS OTHERWISE STATED  
 GENERAL TOLERANCES RIGHT ANGLE BENDS &  
 NO DEC. PLACE +/-1.0mm OTHER ANGLES +/-1°  
 ONE DEC. PLACE +/-0.3mm MACHINED DIAMETERS  
 TWO DEC. PLACE +/-0.1mm CONCENTRIC WITHIN  
 +/-0.1mm T.I.R.  
 SCREW THREADS ARE ISO METRIC COARSE PITCH  
 TOL. 6g/6H (MED. FIT) TO BS3643  
 WIRE DIA./PLATE THICKNESS TO COMMERCIAL LIMITS  
 GEOMETRICAL TOLERANCING TO BS308 PART 3



	PART DESCRIPTION
908104300	FINISHED STOCK PART
908104309	DRAWING FOR CODIFICATION
	ORDER ON THE "00" P/N

UNLESS OTHERWISE STATED:  
 DIMENSIONS IN MILLIMETRES  
 SURFACE FINISH IN MICROMETRES  
 REMOVE SHARP EDGES

© COPYRIGHT 2021 SARUM HYDRAULICS LTD.



SARUM HYDRAULICS LTD.

SALISBURY, SP4 6EB, UK  
 www.sarum-hydraulics.co.uk

TITLE  
 -5JIC FEM TO -4JIC MALE ADAPTOR CATALOGUE CODIFICATION

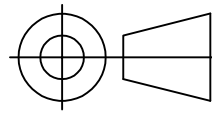
MATERIAL STAINLESS STEEL 316 1.4404

FINISH CLEAN, DEBURR

DRAWN	JGF	APP	
		CHKD	
SCALE	F	SIZE	SHEET OF
CAD	2-D	908104309	
DRAWING NO.	908104309		

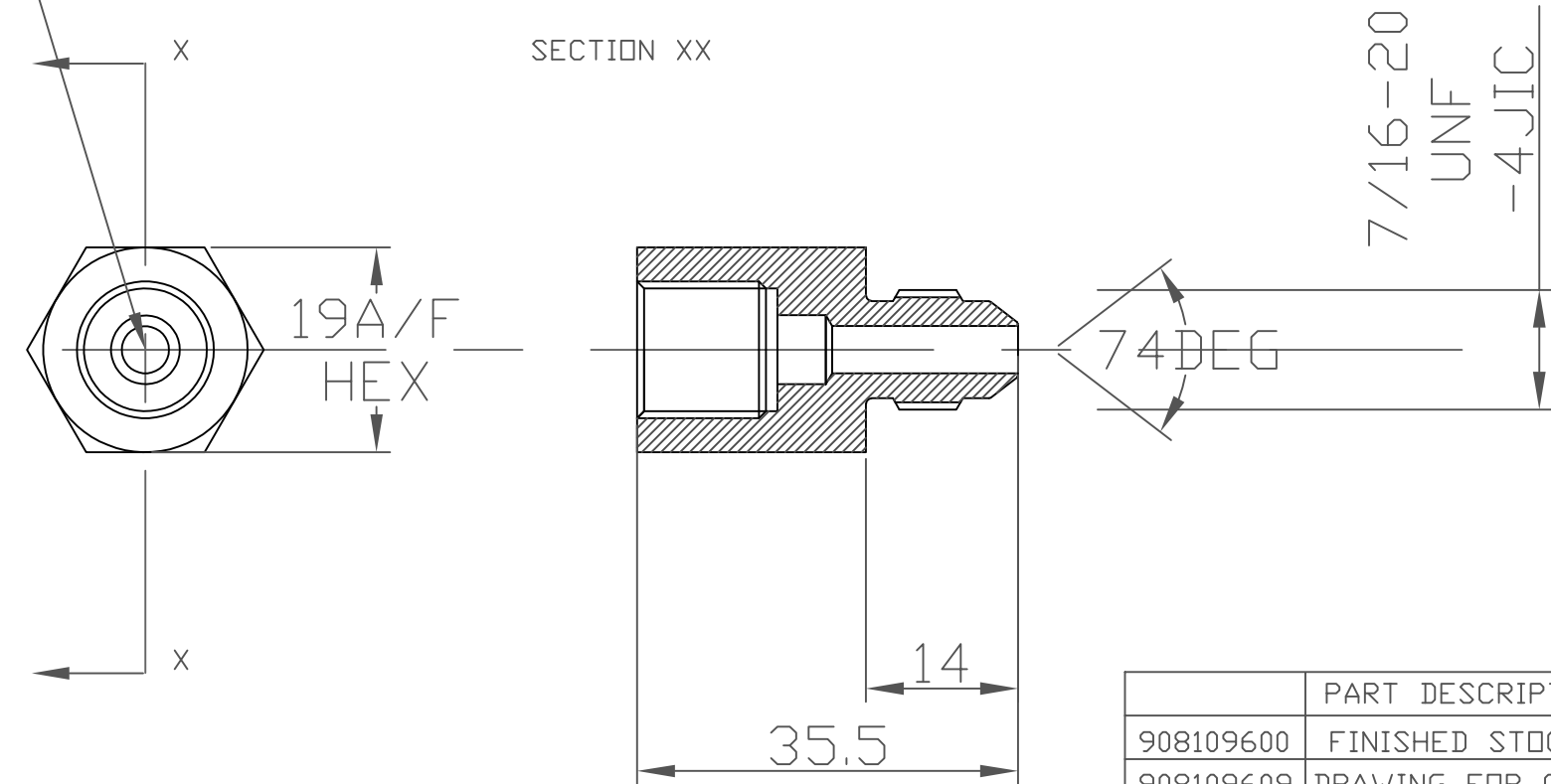
ISSUE	D.C.N.	CHANGE DESCRIPTION & DATE	DATE IMPLEMENTED
1		FIRST ISSUE	07/07

# IF IN DOUBT, ASK THIRD ANGLE PROJECTION



TOLERANCES UNLESS OTHERWISE STATED  
 GENERAL TOLERANCES NO DEC. PLACE +/-1.0mm ONE DEC. PLACE +/-0.3mm TWO DEC. PLACE +/-0.1mm  
 RIGHT ANGLE BENDS & OTHER ANGLES +/-1° MACHINED DIAMETERS CONCENTRIC WITHIN +/-0.1mm T.I.R.  
 SCREW THREADS ARE ISO METRIC COARSE PITCH TOL. 6g/6H (MED. FIT) TO BS3643  
 WIRE DIA./PLATE THICKNESS TO COMMERCIAL LIMITS  
 GEOMETRICAL TOLERANCING TO BS308 PART 3

FLAT BOTTOM MANOMETER CONNECTION  
 G1/4 X 12 DEEP



	PART DESCRIPTION
908109600	FINISHED STOCK PART
908109609	DRAWING FOR CODIFICATION
	ORDER ON THE "00" P/N

UNLESS OTHERWISE STATED:  
 DIMENSIONS IN MILLIMETRES  
 SURFACE FINISH IN MICROMETRES  
 REMOVE SHARP EDGES

© COPYRIGHT 2021 SARUM HYDRAULICS LTD.



SARUM HYDRAULICS LTD.

SALISBURY, SP4 6EB, UK  
 www.sarum-hydraulics.co.uk

TITLE  
 MANO CONNECTION -4JIC TO G1/4 ADAPTOR CATALOGUE CODIFICATION

MATERIAL STAINLESS STEEL 316 1.4404

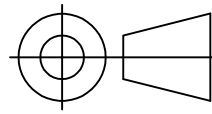
FINISH CLEAN, DEBURR

DRAWN	JGF	APP	
		CHKD	
SCALE	F	SIZE	SHEET OF
CAD	2-D	908109609	
DRAWING NO.	908109609		

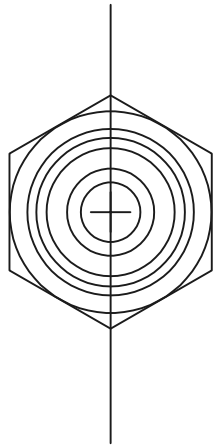
ISSUE	D.C.N.	CHANGE DESCRIPTION & DATE	DATE IMPLEMENTED
1		FIRST ISSUE	01/10

IF IN DOUBT, ASK

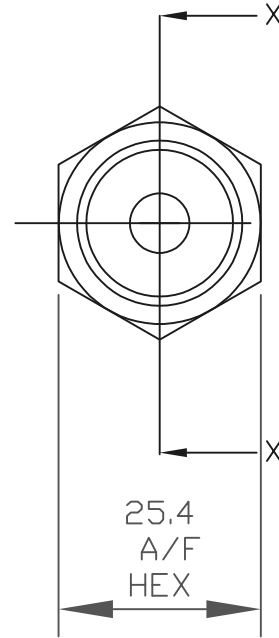
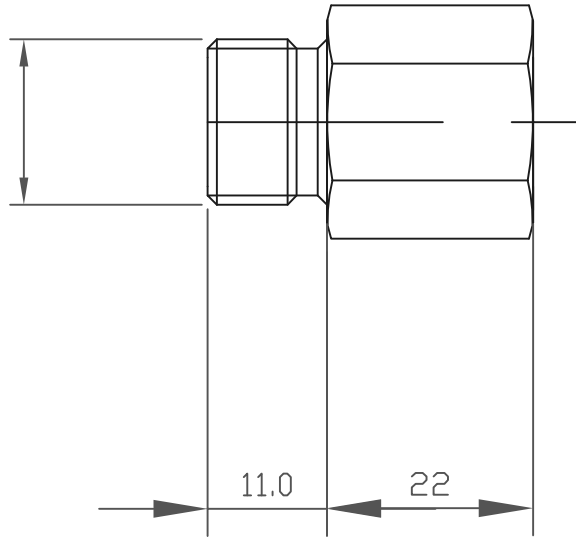
THIRD ANGLE PROJECTION



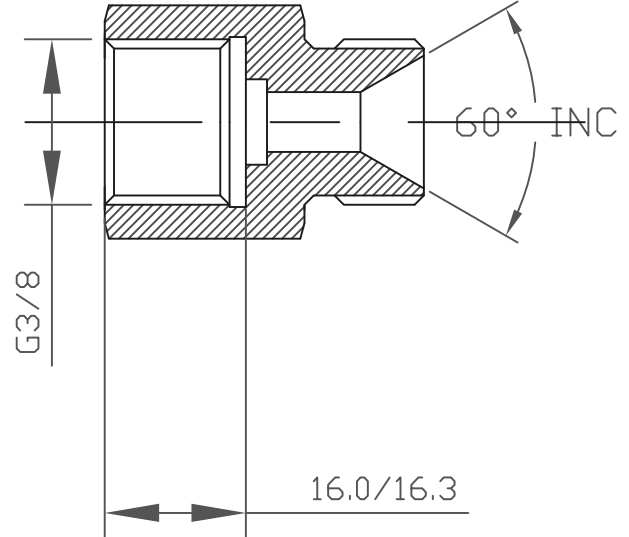
TOLERANCES UNLESS OTHERWISE STATED  
 GENERAL TOLERANCES RIGHT ANGLE BENDS &  
 NO DEC. PLACE +/-1.0mm OTHER ANGLES +/-1°  
 ONE DEC. PLACE +/-0.3mm MACHINED DIAMETERS  
 TWO DEC. PLACE +/-0.1mm CONCENTRIC WITHIN  
 +/-0.1mm T.I.R.  
 SCREW THREADS ARE ISO METRIC COARSE PITCH  
 TOL. 6g/6H (MED. FIT) TO BS3643  
 WIRE DIA./PLATE THICKNESS TO COMMERCIAL LIMITS  
 GEOMETRICAL TOLERANCING TO BS308 PART 3



1/4" BSPP, 2A  
to gauge



SECTION X-X



	PART DESCRIPTION
901024009	FINISHED STOCK PART
901024009C	DRAWING FOR CODIFICATION
	ORDER ON THE "09" P/N

UNLESS OTHERWISE STATED:  
 DIMENSIONS IN MILLIMETRES  
 SURFACE FINISH IN MICROMETRES  
 REMOVE SHARP EDGES

© COPYRIGHT 2021 SARUM HYDRAULICS LTD.



SARUM HYDRAULICS LTD.

SALISBURY, SP4 6EB, UK  
 www.sarum-hydraulics.co.uk

DRAWN	JGF	APP	
		CHKD	
SCALE	F	SIZE	SHEET OF
CAD	2-D	901024009C	
DRAWING NO.	901024009C		

TITLE  
**GAUGE ADAPTOR G3/8 CATALOGUE CODIFICATION**

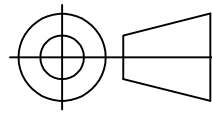
MATERIAL STAINLESS STEEL 316 1.4404

FINISH CLEAN, DEBURR

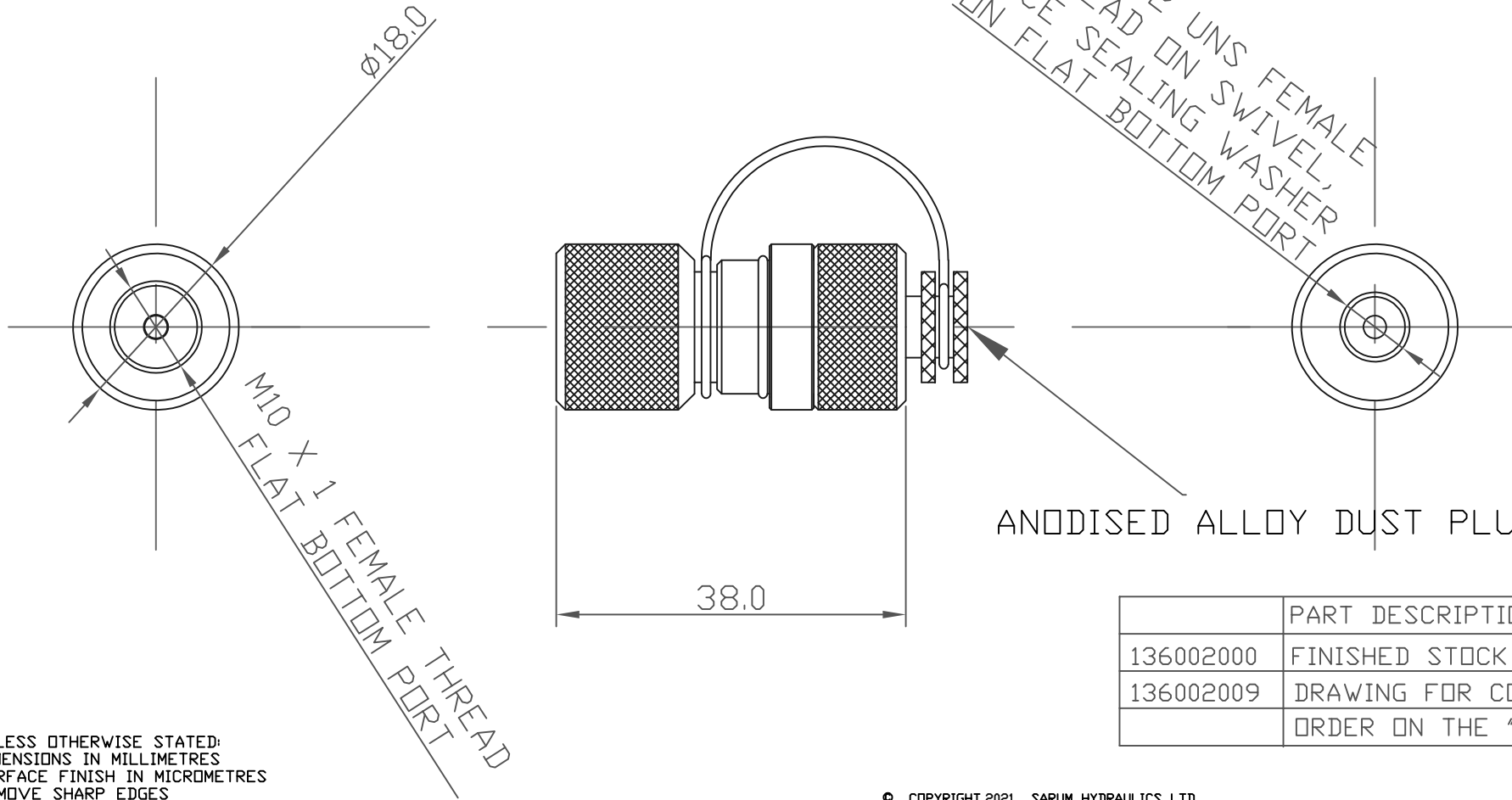
ISSUE	D.C.N.	CHANGE DESCRIPTION & DATE	DATE IMPLEMENTED
1		FIRST ISSUE	10/15

IF IN DOUBT, ASK

THIRD ANGLE PROJECTION



TOLERANCES UNLESS OTHERWISE STATED  
 GENERAL TOLERANCES RIGHT ANGLE BENDS &  
 NO DEC. PLACE +/-1.0mm OTHER ANGLES +/-1°  
 ONE DEC. PLACE +/-0.3mm MACHINED DIAMETERS  
 TWO DEC. PLACE +/-0.1mm CONCENTRIC WITHIN  
 +/-0.1mm T.I.R.  
 SCREW THREADS ARE ISO METRIC COARSE PITCH  
 TOL. 6g/6H (MED. FIT) TO BS3643  
 WIRE DIA./PLATE THICKNESS TO COMMERCIAL LIMITS  
 GEOMETRICAL TOLERANCING TO BS308 PART 3



UNLESS OTHERWISE STATED:  
 DIMENSIONS IN MILLIMETRES  
 SURFACE FINISH IN MICROMETRES  
 REMOVE SHARP EDGES

	PART DESCRIPTION
136002000	FINISHED STOCK PART
136002009	DRAWING FOR CODIFICATION
	ORDER ON THE "00" P/N

© COPYRIGHT 2021 SARUM HYDRAULICS LTD.

ISSUE	D.C.N.	CHANGE DESCRIPTION & DATE	DATE IMPLEMENTED
1		FIRST ISSUE	04/21

**SARUM** HYDRAULICS LTD.  
 SALISBURY, SP4 6EB, UK  
 www.sarum-hydraulics.co.uk

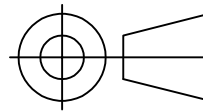
TITLE  
**NATO CONNECTOR M10X1 STAINLESS CODIFICATION**

MATERIAL STAINLESS STEEL 316 1.4404  
 FINISH CLEAN, DEBURR

DRAWN NO	APP
	CHKD
SCALE F SIZE	SHEET OF
CAD 2-D	136002009
DRAWING NO.	
136002009	

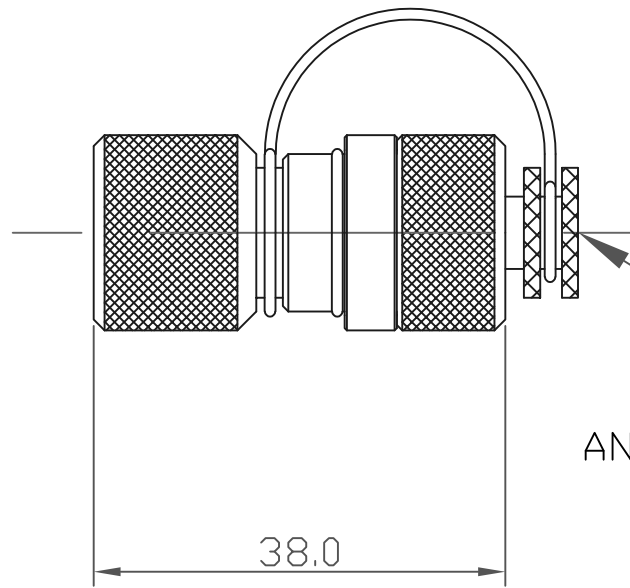
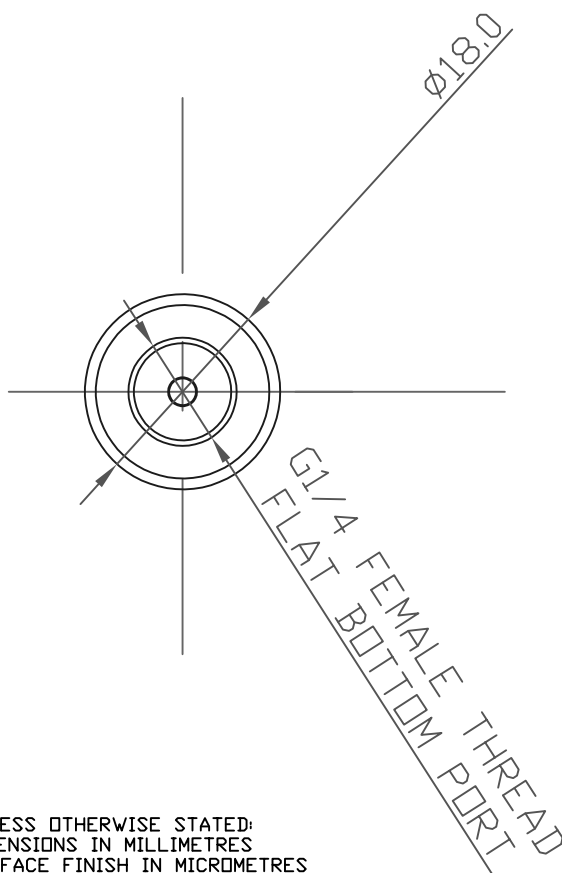
IF IN DOUBT, ASK

THIRD ANGLE PROJECTION



TOLERANCES UNLESS OTHERWISE STATED  
 GENERAL TOLERANCES RIGHT ANGLE BENDS &  
 NO DEC. PLACE +/-1.0mm OTHER ANGLES +/-1°  
 ONE DEC. PLACE +/-0.3mm MACHINED DIAMETERS  
 TWO DEC. PLACE +/-0.1mm CONCENTRIC WITHIN  
 +/-0.1mm T.I.R.  
 SCREW THREADS ARE ISO METRIC COARSE PITCH  
 TOL. 6g/6H (MED. FIT) TO BS3643  
 WIRE DIA./PLATE THICKNESS TO COMMERCIAL LIMITS  
 GEOMETRICAL TOLERANCING TO BS308 PART 3

0.303-32 UNS FEMALE  
 THREAD ON SWIVEL,  
 FACE SEALING WASHER  
 ON FLAT BOTTOM PORT



ANODISED ALLOY DUST PLUG/LANYARD

	PART DESCRIPTION
136002100	FINISHED STOCK PART
136002109	DRAWING FOR CODIFICATION
	ORDER ON THE "00" P/N

UNLESS OTHERWISE STATED:  
 DIMENSIONS IN MILLIMETRES  
 SURFACE FINISH IN MICROMETRES  
 REMOVE SHARP EDGES

© COPYRIGHT 2021 SARUM HYDRAULICS LTD.

					SARUM HYDRAULICS LTD.		DRAWN NO	APP
					SALISBURY, SP4 6EB, UK www.sarum-hydraulics.co.uk			CHKD
				TITLE		SCALE F SIZE	SHEET	OF
				NATO CONNECTOR G1/4 STAINLESS CODIFICATION		CAD 2-D	136002109	
				MATERIAL STAINLESS STEEL 316 1.4404		DRAWING NO.		
1		FIRST ISSUE	04/21			136002109		
ISSUE	D.C.N.	CHANGE DESCRIPTION & DATE	DATE IMPLEMENTED	FINISH CLEAN, DEBURR				