

Micropac® Carbon Steel Hydraulic Hand Pump

A quality engineered hand pump for long life

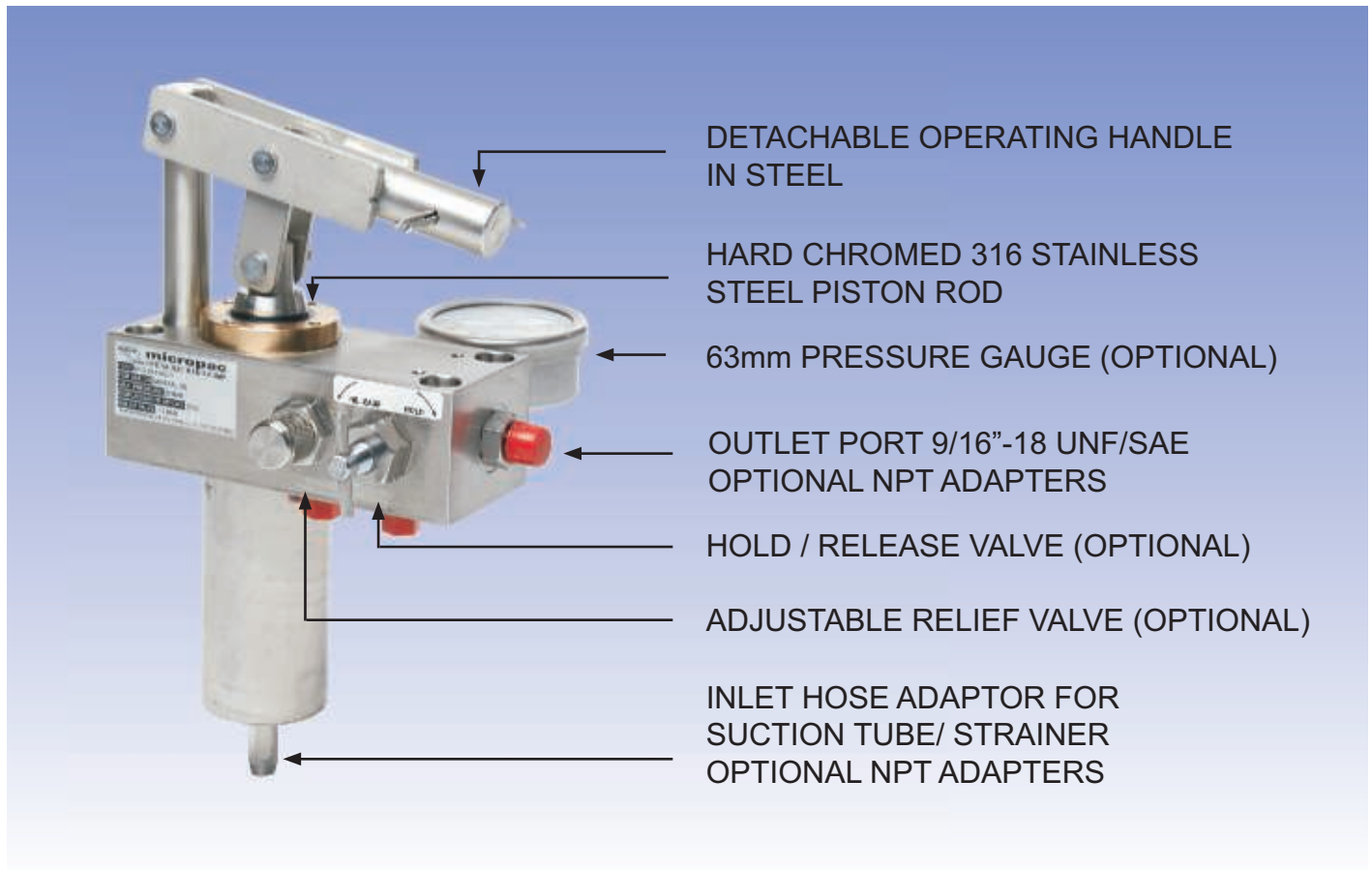


Image shown is of 316 Stainless Steel Model

TYPICAL APPLICATIONS: ACTUATION, OVER-RIDES AND SHUTDOWN SYSTEMS,
PRESSURE TESTING, FILLING AND CHARGING

FEATURES

- Rugged Carbon Steel construction
- For use on oil, glycols and specialist fluids
- Hard chrome plated 316 piston rod for long life
- Poppet outlet check valve for very low leakage
- Soft seat inlet and release valves for reliability
- All valve seats replaceable for long service life
- Optional fixed and portable reservoirs
- Universal mounting orientation
- PTFE wear strips for low friction
- Three models for optimum application;
 - 12cc/stroke to 407 bar
 - 25cc/stroke to 207 bar
 - 49cc/stroke to 102 bar
- Double acting - pumps on up and down stroke
- Nitrile seals standard - optional EPDM / Viton®
- Full Engineering product support

INSTALLATION & MAINTENANCE

APPLICATION

The unit provides manual hydraulic power for a range of applications. Because of our use of soft seat and poppet valves, the unit is suitable for hydraulic fluids including low viscosity types such as water-in-oil emulsions and some offshore control liquids. Standard seals are nitrile rubber. Consult factory for special seal requirements for other fluids, including Viton®, EPDM and specialist aerospace/process compounds.

This pump is not recommended for extended use on seawater, water glycol or other particularly corrosive fluids. For these we recommend the 316 stainless version of this pump.

MATERIALS

The materials of construction: Carbon Steel, 316 Stainless piston rod (hard chromed), CW307G bronze and small amounts of 303, 304, 420, 431 stainless. Seals are PTFE, UHMWP and nitrile. The pump body, barrel and handle mechanism is plated carbon steel.

DISPLACEMENT

The unit is available in three displacement / pressure ratings, 12cc/407 bar, 25cc/207 bar, 49cc/102 bar.

COMMISSIONING

Operate hand pump and pressurise to maximum pressure. Check for leaks in the system. Set relief valve if fitted.

CONNECTIONS

The unit has a 9/16 UNF SAE female thread on the outlet port fitted with a 1/4 BSP male coned outlet adaptor. Make a connection to this with an appropriate adaptor or fitting. Where applicable, the auxiliary port will be plugged or fitted with a pressure gauge. The gauge port is G1/4(BS2779) fat bottom. Optional inlet fittings can be specified including NPT female, BSP or a 9.52mm standpipe.

MAINTENANCE

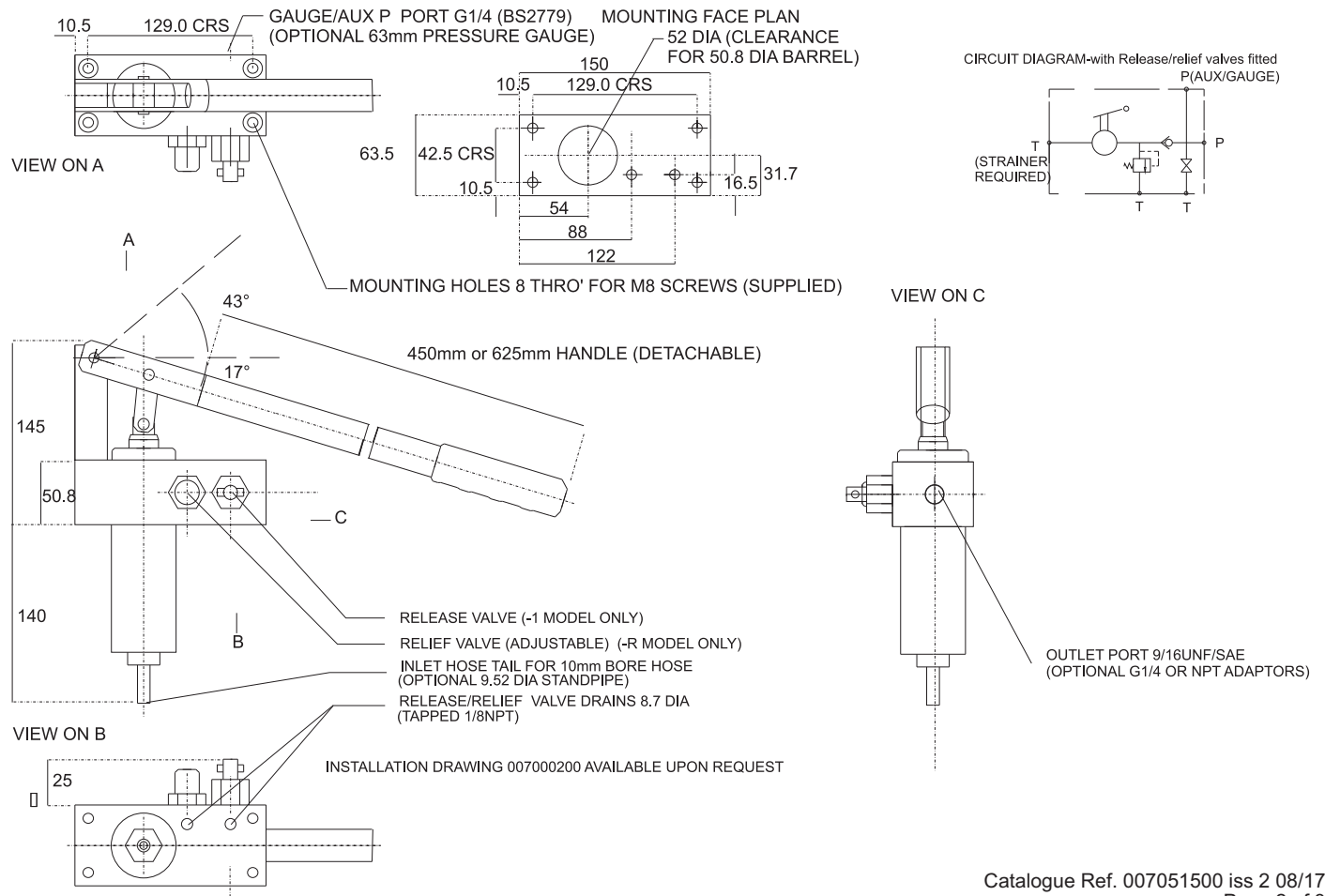
The inlet and outlet check valves are easily serviced and use replaceable seats. Service kits are available comprising all seals, seats, balls and springs.

SAFETY

This pump is a component forming part of a hydraulic pressure system. The system should be designed, operated and maintained in accordance with statutory requirements and other relevant instructions.

DIMENSIONS

ALL DIMENSIONS IN mm



ORDER SHEET FOR MICROPAC® CARBON STEEL HAND PUMP



SARUM
HYDRAULICS
Designers & Manufacturers of Hydraulic Equipment

Model of Pump		
Materials of construction		See page 2 for full materials description
S	Carbon Steel Body	
Displacement		
12	12cc / 407 BAR	
25	25cc / 207 BAR	
49	49cc / 102 BAR	
Handle		
4	450mm Short	
6	625mm Long	
O	No Handle	
Seal Material		
N	Nitrile / Buna N	
V	Viton	
E	EPDM	
S	Special	
Test fluid		
O	Oil	
S	Special	
Release Valve		
R	Normal	
O	No Release	
S	Special	
Pressure Gauge		
G	Normal	
O	No Gauge	
S	Special	
Relief Valve Pressure		
R	Normal	
O	No Relief Valve	
S	Special	

MW S

Gauge, release valve and relief valve are set to the maximum working pressure of the pump as standard.

For special options, please consult factory.

We invest heavily and continuously in product development. Specifications are therefore liable to change without prior notification. ©Micropac is a Registered Trade Mark of Sarum Hydraulics.

Sarum Hydraulics Limited
Unit 1 Danebury Court, Salisbury SP4 6EB, UK
Tel: 44(0)1722 328388 Fax: 44(0)1722 414307
email: pumpsales@sarum-hydraulics.co.uk
www.sarum-hydraulics.co.uk



SARUM
HYDRAULICS
Designers & Manufacturers of Hydraulic Equipment