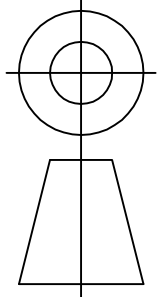
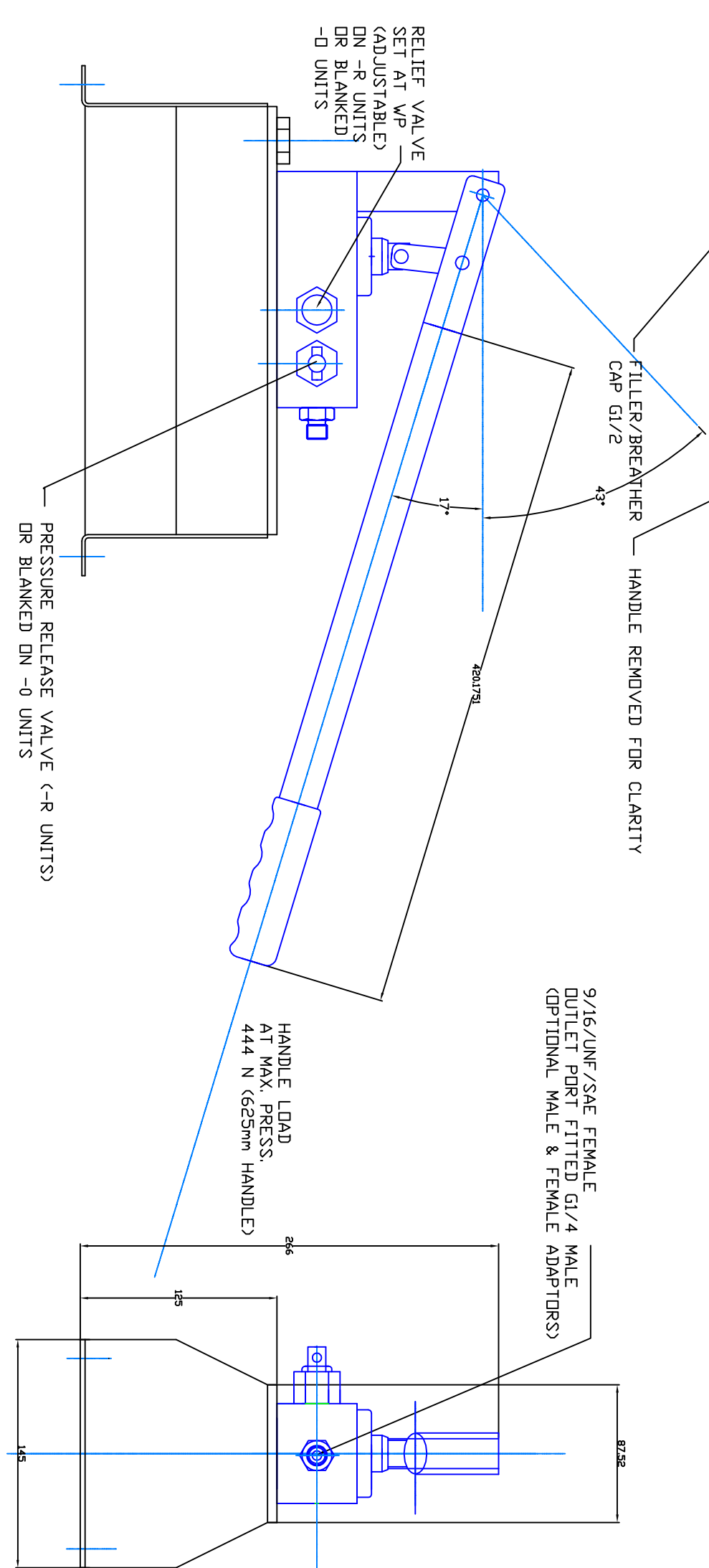
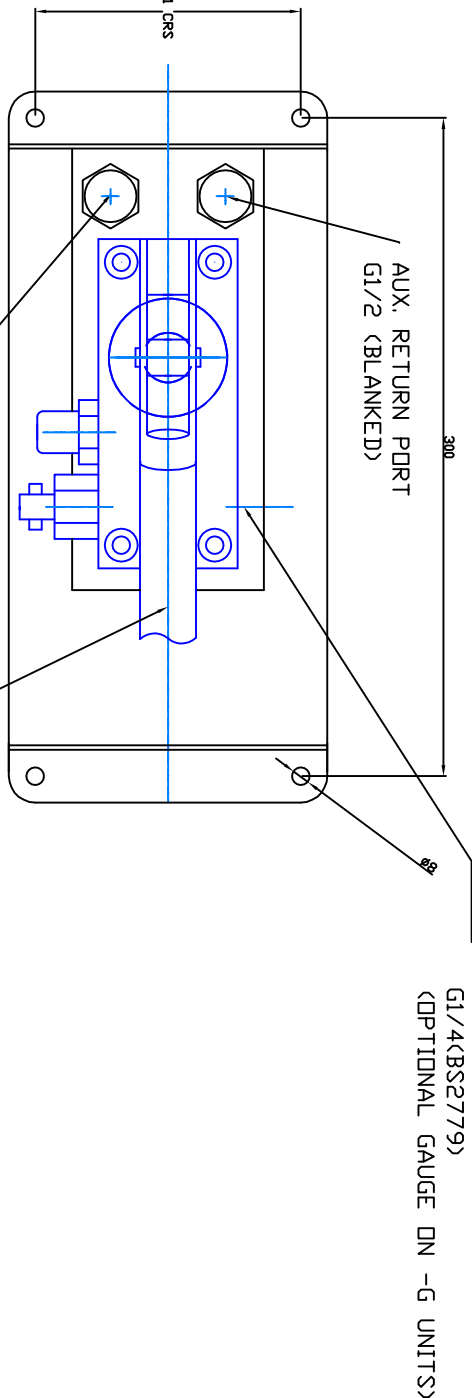


IF IN DOUBT, ASK THIRD ANGLE PROJECTION



TOLERANCES UNLESS OTHERWISE STATED
GENERAL TOLERANCES RIGHT ANGLE BENDS &
NO DEC. PLACE +/-1.0mm OTHER ANGLES +/-1°
ONE DEC. PLACE +/-0.3mm MACHINED DIAMETERS
TWO DEC. PLACE +/-0.1mm CONCENTRIC WITHIN
+/-0.1mm T.I.R.
SCREW THREADS ARE ISO METRIC COARSE PITCH
TOL. 6g/6h (MED. FIT) TO BS3643
WIRE DIA./PLATE THICKNESS TO COMMERCIAL LIMITS
GEOMETRICAL TOLERANCING TO BS308 PART 3



9/16/UNF/SAE FEMALE
OUTLET PORT FITTED G1/4 MALE
(OPTIONAL MALE & FEMALE ADAPTORS)

HANDLE LOAD
AT MAX. PRESS.
444 N (625mm HANDLE)

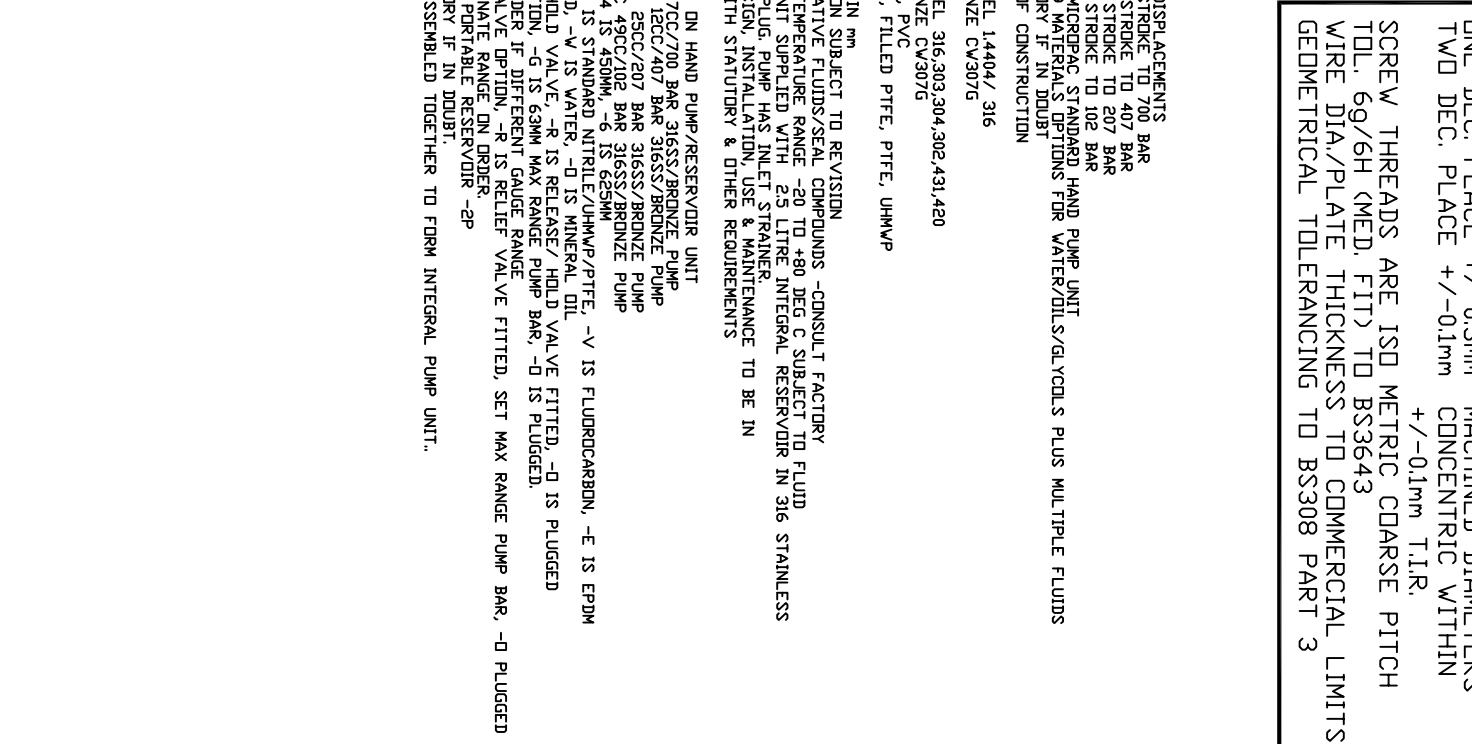
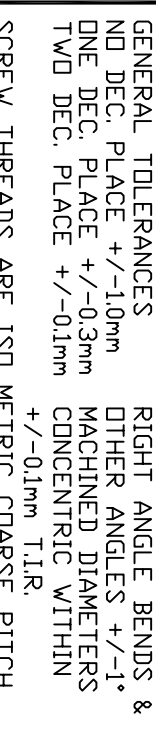
- NOTES
- PRESSURE/DISPLACEMENTS
70CC/DOUBLE STROKE TO 700 BAR
12CC/DOUBLE STROKE TO 407 BAR
25CC/DOUBLE STROKE TO 207 BAR
49CC/DOUBLE STROKE TO 102 BAR
 - PUMP USES MICROPAK STANDARD HAND PUMP UNIT
MV-3-12/25/49 MATERIALS OPTIONS FOR WATER/OILS/GLYCOLS PLUS MULTIPLE FLUIDS
CONSULT FACTORY IF IN DOUBT
 - MATERIALS OF CONSTRUCTION
EXTERNAL
STAINLESS STEEL 14404/ 316
ALUMINIUM BRONZE CW307G
WETTED
STAINLESS STEEL 316,303,304,302,431,420
ALUMINIUM BRONZE CW307G
NYLON, ACETAL, PVC
SEALS: NITRILE, FILLED PTFE, PTFE, UHMW
4. MASS 8 KG
 - DIMENSIONS IN mm
 - SPECIFICATION SUBJECT TO REVISION
 - FOR ALTERNATIVE FLUIDS/SEAL COMPOUNDS -CONSULT FACTORY
 - OPERATING TEMPERATURE RANGE -20 TO +80 DEG C SUBJECT TO FLUID
 - STANDARD UNIT SUPPLIED WITH 4 LITRE INTEGRAL RESERVOIR IN 316 STAINLESS
FITTED WITH G1/2 FILLER/BREATHER IN POLYMER & AUXILIARY G1/2 PORT (BLANKED)
 - SYSTEM DESIGN, INSTALLATION, USE & MAINTENANCE TO BE IN
ACCORDANCE WITH STATUTORY & OTHER REQUIREMENTS
- ORDERING CODE ON HAND PUMP
MG-3-7 BASIC 70CC/700 BAR 316SS/BRONZE PUMP
MG-3-12 BASIC 12CC/407 BAR 316SS/BRONZE PUMP
MG-3-25 BASIC 25CC/207 BAR 316SS/BRONZE PUMP
MG-3-49 BASIC 49CC/102 BAR 316SS/BRONZE PUMP
ADD HANDLE, -4 IS 450MM, -6 IS 625MM
ADD SEAL, -N IS STANDARD NITRILE/UHMW/PTFE, -V IS FLUOROCARBON, -E IS EPDM
ADD TEST FLUID, -W IS WATER, -O IS MINERAL OIL
ADD RELEASE/HOLD VALVE, -R IS RELEASE/HOLD VALVE FITTED, -O IS PLUGGED
ADD GAUGE OPTION, -G IS 63MM MAX RANGE PUMP BAR, -D IS PLUGGED.
SPECIFY ON ORDER IF DIFFERENT GAUGE RANGE
ADD RELIEF VALVE OPTION, -R IS RELIEF VALVE FITTED, SET MAX RANGE PUMP BAR, -O PLUGGED
SPECIFY ALTERNATE RANGE ON ORDER.
ADD 4 LITRE FIXED RESERVOIR -SF
CONSULT FACTORY IF IN DOUBT.
PARTS UNITS ASSEMBLED TOGETHER TO FORM INTEGRAL MG OFFSHORE PUMP UNIT.

UNLESS OTHERWISE STATED:
DIMENSIONS IN MILLIMETRES
SURFACE FINISH IN MICROMETRES
REMOVE SHARP EDGES

DRAWING 403000100 FOR OFFSHORE MG OFFSHORE PUMP ON 5L FIXED RESERVOIR

4	1611 291	WAS 5L RESERVOIR	ES	11/16	
3	1611011	ADD "MG" ORDERING CODES		11/16	
2	1511105	MOD RESERVOIR		11/15	
1		FIRST ISSUE		05/13	
ISSUE	D.C.N.	CHANGE DESCRIPTION & DATE		DATE IMPLEMENTED	FINISH PER NOTE
			SARUM HYDRAULICS LTD.		
			P.O. BOX 48, SALISBURY SP1 3YB		
			TEL. 01722 328388 FAX. 01722 414307		
			TITLE		
			INSTALLATION DRAWING MICROPAK MG PUMP/FIXED RESERVOIR UNIT		
			MATERIAL PER NOTE		
			FINISH PER NOTE		

TOLERANCES UNLESS OTHERWISE STATED
GENERAL TOLERANCES RIGHT ANGLE BENDS &
NO DEC. PLACE ± 1.0 mm OTHER ANGLES $\pm 1^\circ$



DRAWING 445000100 FOR OFFSHORE MD PUMP ON PORTABLE RESERVOIR

LTD,		DRAWN JGF		APP	
SP1 3YB 414307		SCALE F SIZE		CHKD	
UNIT		SHEET		OF	
DRAWING NO.		CAD 2-D		445000100	
MO-**-2P					